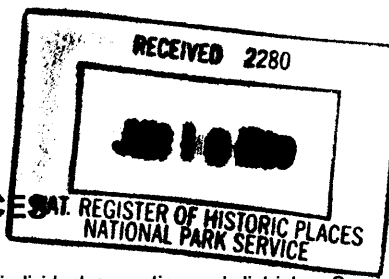


United States Department of the Interior
National Park Service



797

NATIONAL REGISTER OF HISTORIC PLACES
REGISTRATION FORM

This form is for use in nominating or requesting determinations for individual properties and districts. See instructions in How to Complete the National Register of Historic Places Registration Form (National Register Bulletin 16A). Complete each item by marking "X" in the appropriate box or by entering the information requested. If any item does not apply to the property being documented, enter "N/A" for "not applicable." For functions, architectural classification, materials, and areas of significance, enter only categories and subcategories from the instructions. Place additional entries and narrative items on continuation sheets (NPS Form 10-900a). Use a typewriter, word processor, or computer, to complete all items.

1. Name of Property

historic name Sanibel Colored School

other names/site number Sanibel School, Schoolhouse Gallery/LL1974

2. Location

street & number 520 Tarpon Bay Road n/a not for publication

city or town Sanibel n/a vicinity

state FLORIDA code FL county Lee code 071 zip code 33957

3. State/Federal Agency Certification

As the designated authority under the National Historic Preservation Act, as amended, I hereby certify that this nomination request for determination of eligibility meets the documentation standards for registering properties in the National Register of Historic Places and meets the procedural and professional requirements set forth in 36 CFR Part 60. In my opinion, the property meets does not meet the National Register criteria. I recommend that this property be considered significant nationally statewide locally. (See continuation sheet for additional comments.)

[Signature] Date 5/25/99
Signature of certifying official/Title

Florida State Historic Preservation Officer, Division of Historical Resources
State or Federal agency and bureau

In my opinion, the property meets does not meet the National Register criteria. (See continuation sheet for additional comments.)

Signature of certifying official/Title Date

State or Federal agency and bureau

4. National Park Service Certification

I hereby certify that the property is:

- entered in the National Register See continuation sheet
- determined eligible for the National Register See continuation sheet.
- determined not eligible for the National Register See continuation sheet.
- removed from the National Register.
- other, (explain) _____

[Signature] Signature of the Keeper Date of Action 7-8-99

Sanibel Colored School
Name of Property

Lee Co., FL
County and State

5. Classification

Ownership of Property
(Check as many boxes as apply)

- private
- public-local
- public-State
- public-Federal

Category of Property
(Check only one box)

- buildings
- district
- site
- structure
- object

Number of Resources within Property
(Do not include any previously listed resources in the count)

Contributing		Noncontributing	
1		0	buildings
0		0	sites
0		0	structures
0		0	objects
1		0	total

Name of related multiple property listings
(Enter "N/A" if property is not part of a multiple property listing.)

Historic Resources of Lee County, Florida

Number of contributing resources previously listed in the National Register

0

6. Function or Use

Historic Functions
(Enter categories from instructions)

Religion: Religious Facility

Education: School

Current Functions
(Enter categories from instructions)

Commerce: Specialty Store

7. Description

Architectural Classification
(Enter categories from instructions)

Other: Frame Vernacular

Materials
(Enter categories from instructions)

foundation Brick

walls Wood

roof Asphalt

other _____

Narrative Description
(Describe the historic and current condition of the property on one or more continuation sheets.)

8. Statement of Significance

Applicable National Register Criteria

(Mark "x" in one or more boxes for the criteria qualifying the property for National Register listing.)

- A Property is associated with events that have made a significant contribution to the broad patterns of our history.
B Property is associated with the lives of persons significant in our past.
C Property embodies the distinctive characteristics of a type, period, or method of construction or represents the work of a master, or possesses high artistic values, or represents a significant and distinguishable entity whose components lack individual distinction.
D Property has yielded, or is likely to yield information important in prehistory or history.

Criteria Considerations

(Mark "x" in all the boxes that apply.)

Property is:

- A owned by a religious institution or used for religious purposes.
B removed from its original location.
C a birthplace or grave.
D a cemetery.
E a reconstructed building, object, or structure.
F a commemorative property.
G less than 50 years of age or achieved significance within the past 50 years

Areas of Significance

(Enter categories from instructions)

Education

Ethnic Heritage: Black

Period of Significance

1929-1949

Significant Dates

1929

1930

Significant Person

n/a

Cultural Affiliation

n/a

Architect/Builder

Unknown/Unknown

Narrative Statement of Significance

(Explain the significance of the property on one or more continuation sheets.)

9. Major Bibliographical References

Bibliography

Cite the books, articles, and other sources used in preparing this form on one or more continuation sheets.)

Previous documentation on file (NPS):

- preliminary determination of individual listing (36 CFR 36) has been requested
previously listed in the National Register
previously determined eligible by the National Register
designated a National Historic Landmark
recorded by Historic American Buildings Survey
recorded by Historic American Engineering Record

Primary location of additional data:

- State Historic Preservation Office
Other State Agency
Federal agency
Local government
University
Other

Name of Repository

#

Sanibel Colored School
Name of Property

Lee Co., FL
County and State

10. Geographical Data

Acreage of Property Less than 1 acre

UTM References

(Place additional references on a continuation sheet.)

1	1	7	3	9	3	8	5	0	2	9	2	4	6	0	0
	Zone		Easting						Northing						
2															
	Zone		Easting						Northing						

3															
	Zone		Easting						Northing						
4															
	Zone		Easting						Northing						

See continuation sheet

Verbal Boundary Description

(Describe the boundaries of the property on a continuation sheet.)

Boundary Justification

(Explain why the boundaries were selected on a continuation sheet.)

11. Form Prepared By

name/title Stephen Olausen/Consultant & Barbara E. Mattick/Historic Preservationist Supervisor

organization Bureau of Historic Preservation date May 1999

street & number R.A. Gray Building, 500 S. Bronough Street telephone (850) 487-2333

city or town Tallahassee state Florida zip code 32399-0250

Additional Documentation

Submit the following items with the completed form:

Continuation Sheets

Maps

A **USGS map** (7.5 or 15 minute series) indicating the property's location.

A **Sketch map** for historic districts and properties having large acreage or numerous resources.

Photographs

Representative **black and white photographs** of the property.

Additional items

(check with the SHPO or FPO for any additional items)

Property Owner

(Complete this item at the request of SHPO or FPO.)

name Joseph and Grace Pulitano

street & number 520 Tarpon Bay Road telephone (941) 472-1193

city or town Sanibel state FL zip code 33957

Paperwork Reduction Act Statement: This information is being collected for applications to the National Register of Historic Places to nominate properties for listing or determine eligibility for listing, to list properties, and amend listings. Response to this request is required to obtain a benefit in accordance with the National Historic Preservation Act, as amended (16 U.S.C. 470 et seq.).

Estimated Burden Statement: Public reporting burden for this form is estimated to average 18.1 hours per response including time for reviewing instructions, gathering and maintaining data, and completing and reviewing the form. Direct comments regarding this burden estimate or any aspect of this form to the Chief, Administrative Services Division, National Park Service, P.O. Box 37127, Washington, DC 20013-7127, and the Office of Management and Budget, Paperwork Reductions Projects (1024-0018), Washington, DC 20503.

**United States Department of the Interior
National Park Service**

**NATIONAL REGISTER OF HISTORIC PLACES
CONTINUATION SHEET**

Section number 7 Page 1 **SANIBEL COLORED SCHOOL**
Sanibel, Lee Co., FL

SUMMARY

Sanibel Colored School is located on the southern end of scenic Sanibel Island at 520 Tarpon Bay Road. Located within the National Register boundaries are the former schoolhouse and a single lot of land, which comprised the extent of the school property during the historic period. The schoolhouse is a simple wood frame vernacular building that originally contained one room. Additions were placed on the south and west elevations of the building in 1930 and 1977, respectively.

PRESENT AND ORIGINAL APPEARANCE

Setting

Sanibel Colored School is located on a corner lot at the intersection of Tarpon Bay and Island Inn roads near the southern end of Sanibel Island. It is surrounded on the north, south and west by vacant land and on the east by a parking lot and a strip shopping center that is set back from the road (photo 1). The lot on which the building is located contains several large pine trees. A curved drive, which has access from both Tarpon Bay and Island Inn roads, leads to a sand park and shell parking lot in front of the building (photo 2). A modern metal sculpture is located in a grass island between the drive and the road.

Exterior

Sanibel Colored School is a one-story frame vernacular building with an irregular plan, consisting of a side gable roof main unit, two side gable extensions, and a rear addition. The roofs of the historic units of the building are moderately-pitched and surfaced with composition shingles. The exterior walls are clad with wood drop siding.

Facade (east elevation)

The facade of the building is divided into three bays (photo 3). The main rectangular unit of the building forms the central bay and contains a ribbon of six double-hung sash windows with 4/4 lights. The windows are set in a simple wood surround with a group of decorative raised panels at either end. The main entrance is located at the junction of the main unit and the north extension. The east side of the north extension contains a single rectangular window opening flanked by raised panels. The south extension contains a single door entrance and a group of three rectangular window openings that originally contained double-hung sash windows, but now have metal awnings (photo 4).

**United States Department of the Interior
National Park Service**

**NATIONAL REGISTER OF HISTORIC PLACES
CONTINUATION SHEET**

Section number 7 Page 2 **SANIBEL COLORED SCHOOL
Sanibel, Lee Co., FL**

North side

The north side consists of the gable end of the 1930 addition and the main elevation of the 1977 addition. The gable end of the 1930 addition contains a rectangular vent, which has been covered with plywood, and a single rectangular door entrance (photo 5). A flat roof hyphen leads to the rear bi-level roof 1977 wood frame and stucco addition (photo 6). The upper portion of the roof extends over a ribbon of fixed windows. An entrance to the addition is located at the northeast corner.

Rear elevation

The addition connects with the main unit to form an L in the rear of the building (photo 7). Two narrow rectangular openings on the original portion of the building have been filled with plywood (photo 8).

South side

A small gable extension projects from the center of the south side of the main block (photo 9). It is flanked by double-hung sash windows with 4/4 lights. Similar windows are located on the west and south sides of the gable extension.

Interior

The original portion of the building contains two rooms. The main room is thirty-six feet in length and twenty-six feet in depth (photo 10). The original horizontal board ceilings and walls are intact. The central portion of the ceiling extends above the eaves line of the roof and slopes down on either side. The floor is covered with vinyl tiles. A bank of windows on the east wall provides light and ventilation for the room (photo 11). The 1930 addition is accessed through a rectangular opening. Presently used for additional gallery space and storage, the area is divided by stud walls into four rooms. To the west is a hall that leads to the rear 1977 addition (photo 13). The addition consists of a single rectangular room that is used for gallery space (photo 14). The south gable extension contains a small storage area (photo 15).

Alterations

Several window openings have been enclosed with plywood. The windows of the 1930 addition have been replaced with modern metal awning windows. The major alteration to the historic appearance of the building, however, is the rear 1977 addition. The addition is attached to the historic building by a small connector, and does not significantly diminish the architectural integrity of the historic school.

United States Department of the Interior
National Park Service

**NATIONAL REGISTER OF HISTORIC PLACES
CONTINUATION SHEET**

Section number 8 Page 1 **SANIBEL COLORED SCHOOL**
Sanibel, Lee Co., FL

SUMMARY

The Sanibel Colored School, as it was known historically, is eligible for listing in the National Register of Historic Places under Criterion A in the areas of Education and Ethnic Heritage: Black. It is one of only three remaining historic schools for black children in Lee County. It was established in 1929 at the end of Lee County's first concerted effort to consolidate the school system and provide modern school facilities. It contributes to the *Historic Resources of Lee County, Florida* multiple property group under historic context V, **Historic Development of the Lee County School System, 1887-1950** and property type F.3, **Education Buildings**.

HISTORIC DEVELOPMENT OF THE SANIBEL COLORED SCHOOL

Sanibel Island is the southernmost of a group of barrier islands between Gulf of Mexico and Pine Island Sound. Distant, except by boat, from the mainland, the area received its first significant settlement during the mid 1880s, when several homesteads were established there. By 1889 there were about twenty houses and 100 residents on the island. The earliest industry was the farming of vegetables and citrus fruits. As on the other islands in the area, most notably Captiva to the north, fishing and tourism also played important roles in the development of the area. The isolation of the area, however, prevented significant settlement until well into the twentieth century. In 1921 a hurricane hit the island and all but wiped out farming on the island, but that did not keep investors from attempting to capitalize on its attractive Gulf beaches during the subsequent Florida land boom. Daily ferry service from Punta Rassa was established early in 1925. Subdivisions, including Sanibel Center, Sanibel Gardens, and Sunniland del Mar, were platted and numerous houses ranging from small bungalows to impressive mansions were constructed. There were also a number of hotels, including the Matthews, Casa Ybel, Captiva House and Sanibel House, that catered to the hundreds of sportsmen, bathers, and sea shell hunters that descended on the islands each week during the tourist season. Sanibel Island continues to be one of the most prominent tourist destinations in South Florida.¹

Black settlement on the island occurred during its early stages of development as an agricultural center, but the number of black school age children was not significant enough to establish a school in the area until the late 1920s. By that time, Lee County as a whole had a total enrollment of about 500 black students. While the white students in the county were being moved into modern new facilities constructed under the county's first concerted school facility improvement campaign, black schools continued, for the most part, to be held in old wood frame buildings. The largest school for blacks--Paul Laurence Dunbar School--was located in Fort

¹Florida Preservation Services, "Lee County Historic Sites Survey," (Report prepared for the Lee County Planning Department, December, 1986) 89.

**United States Department of the Interior
National Park Service**

**NATIONAL REGISTER OF HISTORIC PLACES
CONTINUATION SHEET**

Section number 8 Page 2 **SANIBEL COLORED SCHOOL**
Sanibel, Lee Co., FL

Myers. It was constructed in 1927 and was the only large school of its kind in the county.

In April 1929, the Lee County Board of Public Instruction (LBPI) authorized the purchase of a small wood frame building on Sanibel Island to house a school for black children. The building, which was constructed about 1915, was owned by the Florida Baptist Convention of Jacksonville and apparently had served as a Baptist church. It was sold with its surrounding property to the board for \$1,500.²

The school was opened the following September for the 1929-30 term. In addition to serving students living in the immediate vicinity, pupils from the neighboring communities of Wulfert and Captiva were expected to attend the school. For some, it meant walking as many as four miles to and from the school each day. Later, students in those areas were granted permission to ride on school buses that brought white children to a separate wood frame school building located nearby.³

In January 1930 the LBPI authorized the construction of an addition to the south side of the building that was to provide living quarters for the school's first teacher, Hazel Hammond. The plans for the 16x20 foot addition were approved in July and it was completed in August at a cost of \$439.⁴

The Sanibel Colored School remained open throughout the remainder of the historic period. It was probably closed in the early 1960s when the present Sanibel Elementary School was constructed. In 1972 the building was purchased by Clarisse and Fred Fox, who constructed an addition to the rear of the building in 1977. In 1990 the present owners acquired the building and established the Schoolhouse Art Gallery there.

²Lee County School Board, Minutes, April 3, 1929.

³Donald O. Stone and Beth W. Carter, *The First 100 Years: Lee County Public Schools, 1887-1987* (Fort Myers, Florida: Department of Printing, The School Board of Lee County, 1987) 168.

⁴Lee County School Board, Minutes, January 8, July 9, and August 6, 1930.

**United States Department of the Interior
National Park Service**

**NATIONAL REGISTER OF HISTORIC PLACES
CONTINUATION SHEET**

Section number 9 Page 1 **SANIBEL COLORED SCHOOL**
Sanibel, Lee Co., FL

MAJOR BIBLIOGRAPHICAL REFERENCES

Florida Preservation Services. "Lee County Historic Sites Survey." Report prepared for the Lee County Planning Department, December, 1986.

Lee County School Board. Minutes, 1929-1950.

Stone, Donald O. and Beth W. Carter. *The First 100 Years: Lee County Public Schools, 1887-1987*. Fort Myers, Florida: Department of Printing, The School Board of Lee County, 1987.

**United States Department of the Interior
National Park Service**

**NATIONAL REGISTER OF HISTORIC PLACES
CONTINUATION SHEET**

Section number 10 Page 1 **SANIBEL COLORED SCHOOL**
Sanibel, Lee Co., FL

VERBAL BOUNDARY DESCRIPTION

The building is located on a parcel of land in the City of Sanibel subdivision that carries the Lee County property number 26-46-22-T4-00019-0000. The boundary runs around the perimeter of the lot.

BOUNDARY JUSTIFICATION

The boundary was drawn to encompass the entire tract of land historically associated with the Sanibel Colored School.

**United States Department of the Interior
National Park Service**

**NATIONAL REGISTER OF HISTORIC PLACES
CONTINUATION SHEET**

Section number _____ Photos _____ Page 1 **SANIBEL COLORED SCHOOL**
Sanibel, Lee Co., FL

INVENTORY OF PHOTOGRAPHS

1. SANIBEL COLORED SCHOOL
2. LEE COUNTY, FLORIDA
3. STEPHEN OLAUSEN
4. NOVEMBER 1996
5. HISTORIC PROPERTY ASSOCIATES
6. STREETScape VIEW OF PROPERTY, FACING SOUTHWEST
7. PHOTO NO. 1 OF 15

Numbers 1-5 are the same for the remaining photographs.

6. STREETScape VIEW OF PROPERTY, FACING NORTHWEST
7. PHOTO NO. 2 OF 15

6. VIEW OF FACADE (EAST ELEVATION), FACING SOUTHWEST
7. PHOTO NO. 3 OF 15

6. VIEW OF FACADE, FACING NORTHEAST
7. PHOTO NO. 4 OF 15

6. VIEW OF SOUTH SIDE, FACING NORTHWEST
7. PHOTO NO. 5 OF 15

6. VIEW OF SOUTH SIDE OF THE REAR ADDITION, FACING NORTHWEST
7. PHOTO NO. 6 OF 15

6. VIEW OF REAR ELEVATION AND NORTH SIDE OF ADDITION, FACING SOUTHEAST
7. PHOTO NO. 7 OF 15

6. VIEW OF REAR ELEVATION OF THE ORIGINAL BUILDING, FACING EAST
7. PHOTO NO. 8 OF 15

6. VIEW NORTH SIDE, FACING SOUTHEAST
7. PHOTO NO. 9 OF 15

**United States Department of the Interior
National Park Service**

**NATIONAL REGISTER OF HISTORIC PLACES
CONTINUATION SHEET**

Section number _____ Photos _____ Page 2 **SANIBEL COLORED SCHOOL**
Sanibel, Lee Co., FL

- 6. INTERIOR VIEW OF MAIN CLASSROOM (NOW AN ART GALLERY), FACING SOUTHWEST
- 7. PHOTO NO. 10 OF 15

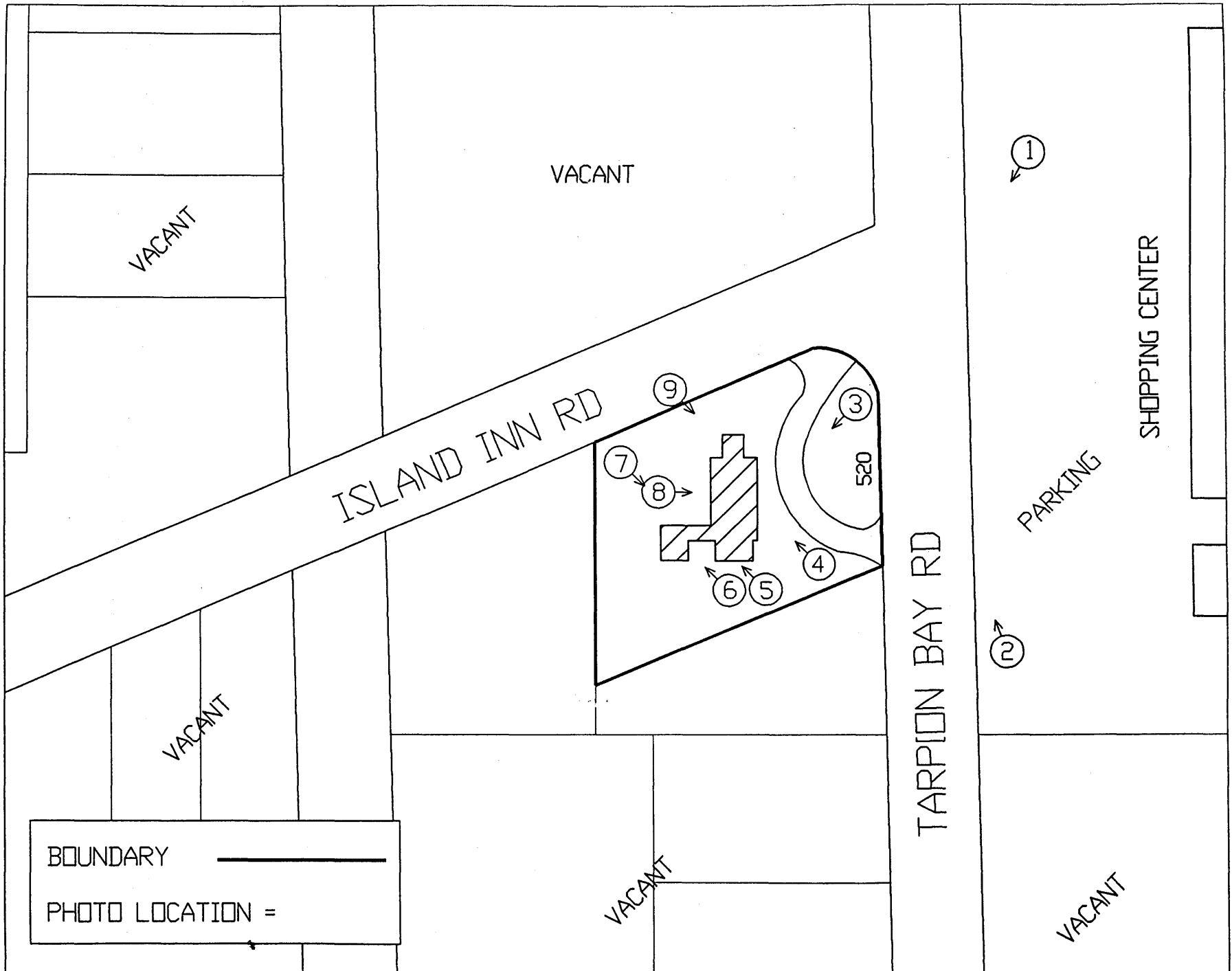
- 6. INTERIOR VIEW OF EAST WINDOWS IN MAIN CLASSROOM, FACING NORTHEAST
- 7. PHOTO NO. 11 OF 15

- 6. INTERIOR VIEW OF SOUTH EXTENSION (FORMER TEACHER'S QUARTERS), FACING SOUTHWEST
- 7. PHOTO NO. 12 OF 15

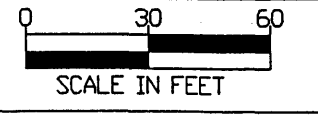
- 6. INTERIOR VIEW OF HYPHEN ADDITION LEADING TO THE REAR ADDITION, FACING WEST
- 7. PHOTO NO. 13 OF 15

- 6. INTERIOR VIEW OF EAST AND SOUTH WALLS OF THE ADDITION, FACING SOUTHEAST
- 7. PHOTO NO. 14 OF 15

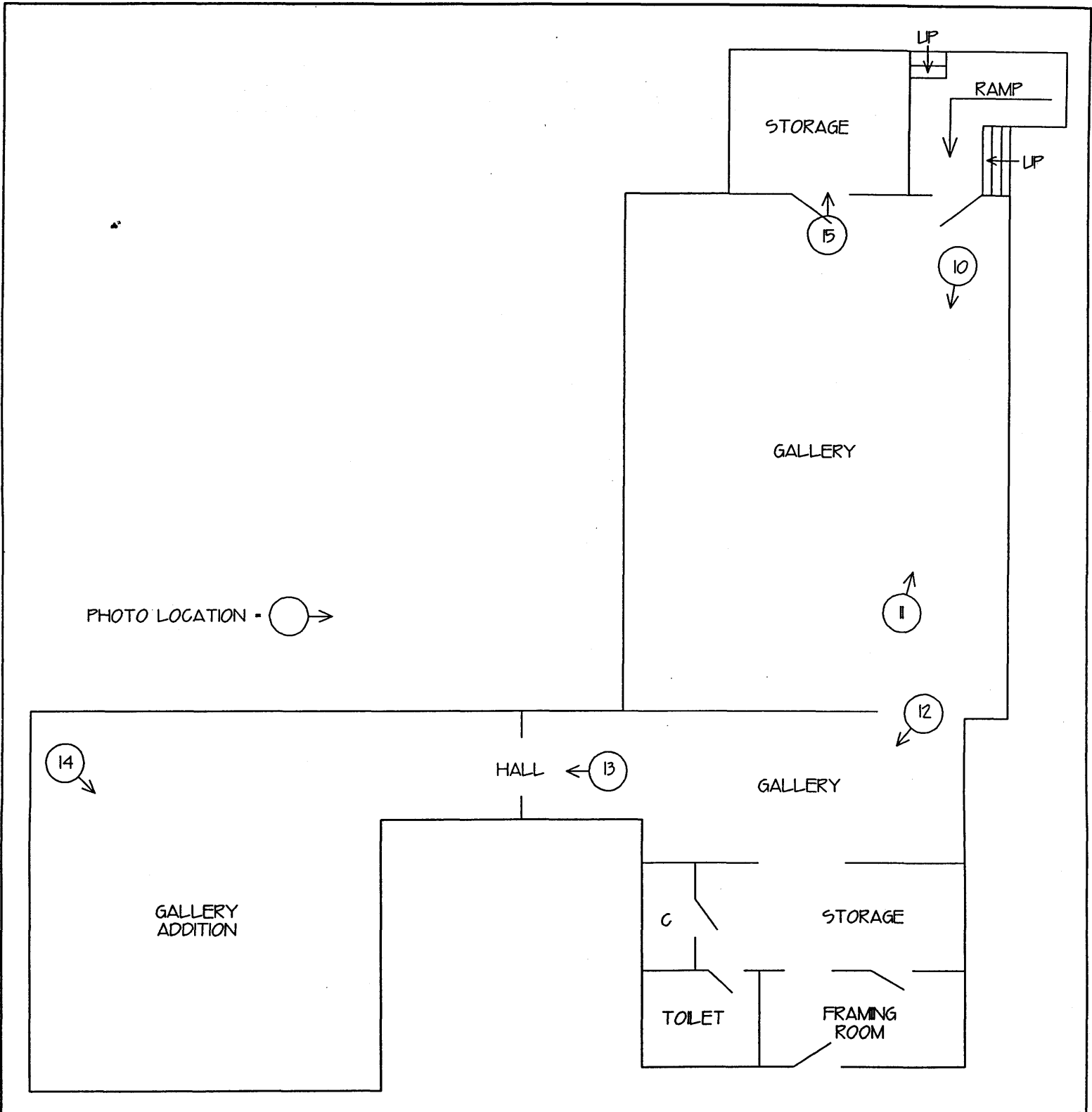
- 6. INTERIOR VIEW OF STORAGE AREA, FACING NORTH
- 7. PHOTO NO. 15 OF 15



SITE PLAN: SANIBEL COLORED SCHOOL
 520 TARPON BAY RD, SANIBEL, FL



PREPARED BY
 HISTORIC PROPERTY ASSOCIATES, INC.
 NOVEMBER 1996



FLOOR PLANS: SANIBEL COLORED SCHOOL
 520 TARPON BAY ROAD, SANIBEL, FLORIDA



PREPARED BY
 HISTORIC PROPERTY ASSOCIATES, INC.
 NOVEMBER 1996

LEE COUNTY,
FLORIDA

CHARLOTTE COUNTY

ALVA
SCHOOLS

J. COLLIN ENGLISH
ELEMENTARY

EDISON PARK
ELEMENTARY

TICE
ELEMENTARY

SANIBEL COLORED
SCHOOL

FORT MYERS BEACH
ELEMENTARY

BONITA SPRINGS
ELEMENTARY
SCHOOL

LOCATION OF SCHOOLS PROPOSED FOR LISTING IN THE
NATIONAL REGISTER OF HISTORIC PLACES

