



Marsh-Johnson House

Saluda County, South Carolina

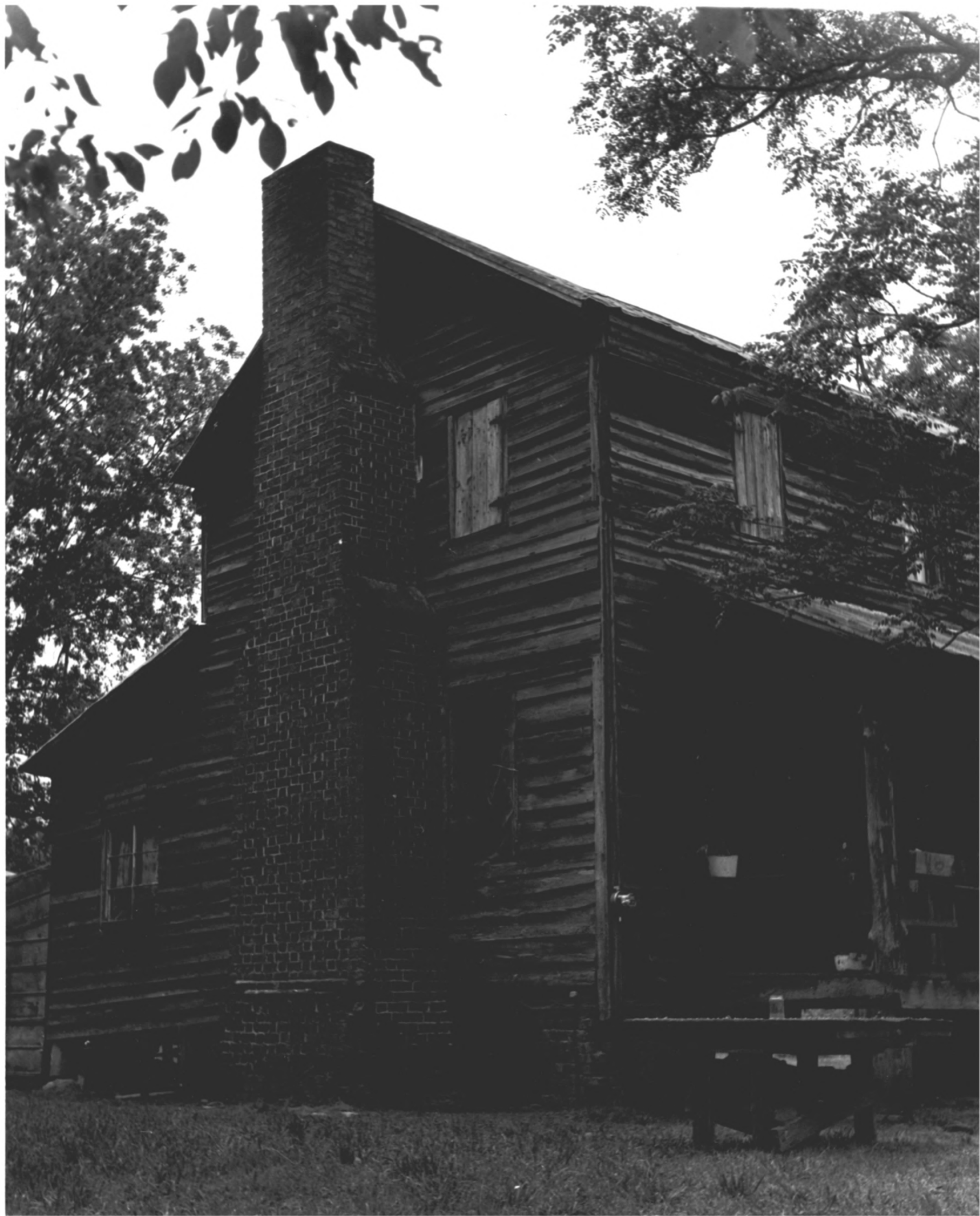
John C. Blythe, Jr. - May 8, 1981

Upper Savannah Council of Governments

Greenwood, South Carolina

Facade (Southwest Elevation)

#1



Marsh-Johnson House

Saluda County, South Carolina

John C. Blythe, Jr. - May 8, 1981

Upper Savannah Council of Governments

Greenwood, South Carolina

Northwest Elevation

#2



Marsh-Johnson House

Saluda County, South Carolina

John C. Blythe, Jr. - May 8, 1981

Upper Savannah Council of Governments

Greenwood, South Carolina

Northeast Elevation (Rear)

#3



Marsh-Johnson House

Saluda County, South Carolina

John C. Blythe, Jr. - May 8, 1981

Upper Savannah Council of Governments

Greenwood, South Carolina

Southeast Elevation

#4



Marsh-Johnson House

Saluda County, South Carolina

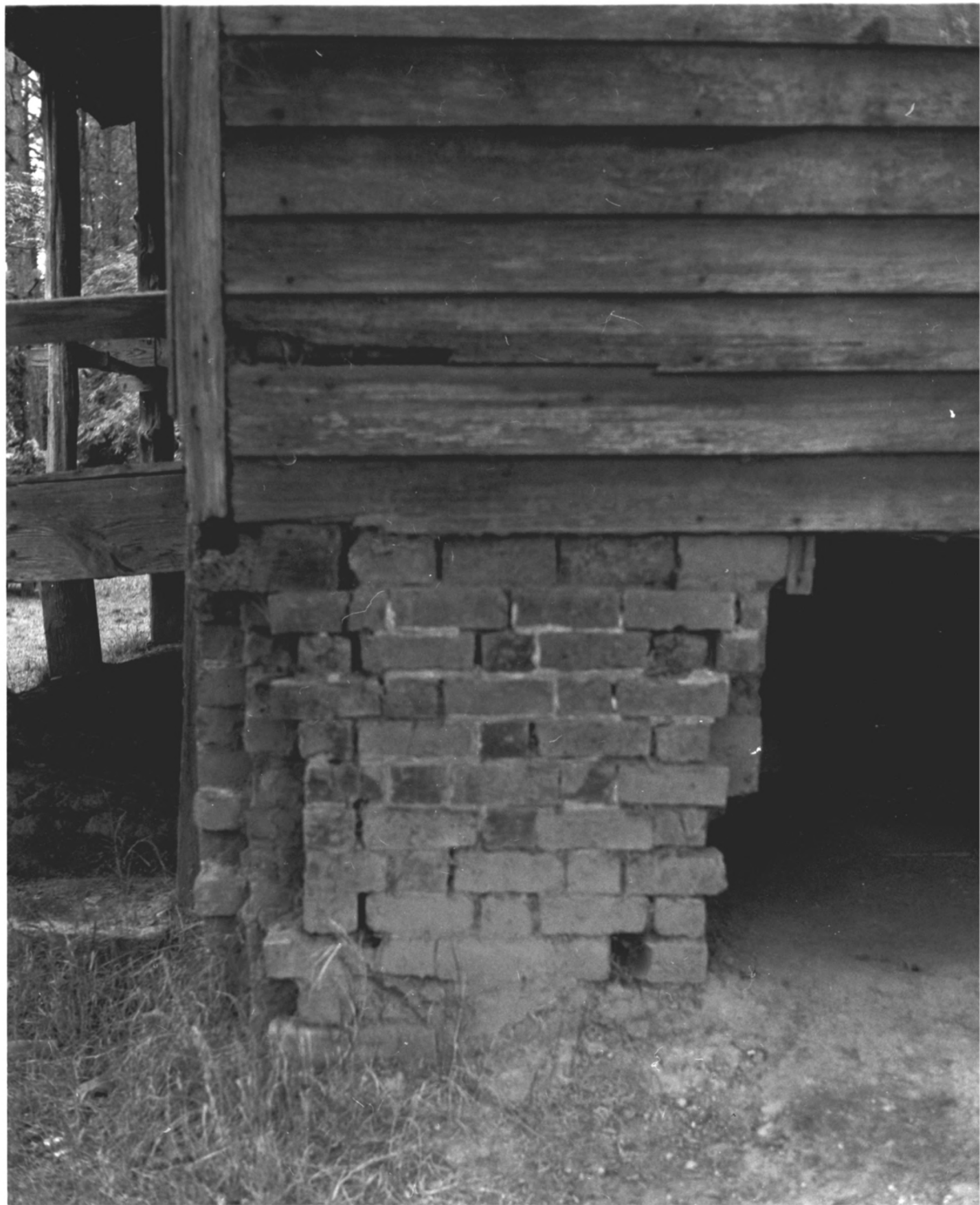
John C. Blythe, Jr. - May 8, 1981

Upper Savannah Council of Governments

Greenwood, South Carolina

Southeast Chimney

#5



Marsh-Johnson House

Saluda County, South Carolina

John C. Blythe, Jr. - May 8, 1981

Upper Savannah Council of Governments

Greenwood, South Carolina

South Pier

#6



Marsh-Johnson House
Saluda County, South Carolina
John C. Blythe, Jr., 8 May 1981
Upper Savannah Council of Governments
Greenwood, South Carolina
Parlor Mantel
#7



Marsh-Johnson House

Saluda County, South Carolina

John C. Blythe, Jr., 8 May 1981

Upper Savannah Council of Governments

Greenwood, South Carolina

Dining Room Mantel

#8



Marsh-Johnson House

Saluda County, South Carolina

John C. Blythe, Jr., 8 May 1981

Upper Savannah Council of Governments

Greenwood, South Carolina

Northwest Bedroom

#9