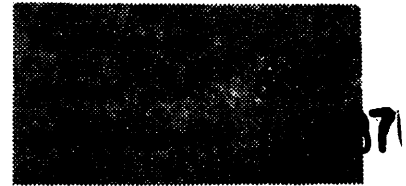


**United States Department of the Interior  
National Park Service**

**National Register of Historic Places  
Inventory—Nomination Form**



Inventory  
Continuation sheet

Item number 7

Page 1 of 3

NAME: Hidden Lake Peak Lookout

LOCATION: Mt. Baker - Snoqualmie National Forest; Congressional District 2, Mt. Baker Ranger District, Marblemount, Washington (53), Skagit County (057).

ADDRESS: USDA Forest Service  
Mt. Baker - Snoqualmie National Forest  
1022 First Avenue  
Seattle, WA 98104

CLASSIFICATION/CATEGORY: Building      CONTRIBUTING RESOURCES: 1 building  
NONCONTRIBUTING: 0

DESCRIPTION:

Condition

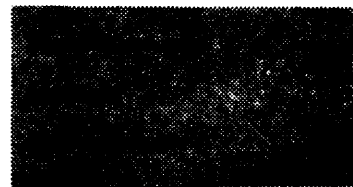
Excellent/good       Altered       Original Site

Hidden Lake Peak Lookout is located on a pinnacle of highly jointed granitic rock on the southernmost peak of Hidden Lake Peaks. It is situated in close proximity to the North Cascades National Park boundary. At an elevation of +6,890 feet, the cabin is well above timberline and only moss and lichens grow in the vicinity. The Lookout is accessed by a 4.5 mile long Forest Service trail which climbs steeply through heavy timber, open meadows, and over snow fields and glacial scarred granite. Although views are slightly obscured by adjacent granite outcrops, the Lookout commands spectacular views to Cascade Pass, El Dorado Peak, Inspiration Glacier, Lookout Mountain, Mt. Baker and Hidden Lake.

This one-story, single room, 14' x 14' cabin is wood-frame construction built according to standard Forest Service Lookout House plans first issued c. 1929. The floor framing system is anchored to and supported by knee-braced, peeled cedar posts and piled rock piers. A guy anchorage system with a varied combination of wrapped and bolted cables and rock weights is utilized to secure the vulnerable structure against severe wind velocities and snow loads. The roof is a simple gable form covered by cedar shingles with lightning rods and protection system at each gable end. Exterior walls are clad with 6" beveled cedar siding with corner boards, and a band of five 9-light fixed and pivoting sash windows are located at each elevation with the exception of the door opening. Some original window shutters constructed from 1 x 6 ship-lap with z-bracing remain in place on the east elevation and portions of the west and north elevations. Some shutters have blown off or been purposely removed and stored on site due to concerns based on the difficulty and danger of their operation by current short-term and transitory users. Original 1/2" steel rod and eyebolt shutter supports remain in use. Original panel door with 9-lights above is in place although slightly altered. The Lookout is essentially unaltered and regularly maintained by an active "user group." The only significant exterior alteration in addition to shutter removal is the replacement of foundation post knee-braces with milled lumber rather than "in kind" peeled logs. Original intact interior finishes are beaded board walls and ceilings and 1 x 4 fir flooring. The interior also exhibits original simply constructed furnishings which include built-in cabinets and open shelves, table and lightning stool. The firefinder and stand have been removed.

**United States Department of the Interior  
National Park Service**

**National Register of Historic Places  
Inventory—Nomination Form**



Continuation sheet

Item number 7

Page 2 of 3

**SIGNIFICANCE:**

Specific Dates: 1931

Builder/Architect: Constructed per earliest standard Forest Service Plan L-4 (c. 1929). Built by Larsen Brothers Construction.

History

Hidden Lake Peak was apparently constructed in the late summer or fall of 1932 by members of "Larsen Brothers Construction" and Forest Service crews. The design of the Lookout is that shown on shop drawings developed in 1930 for the Aladdin Company, Portland, Oregon, the principal supplier of pre-cut Lookout Houses to the USDA Forest Service. The marked and pre-packaged bundles of construction materials were apparently shipped to the Baker River Ranger Station, and then hauled by pack team from the Marble Creek Crossing up a 7-mile trail to the saddle between Hidden Lake Peak and the southern summit of the peak. From there they were hand-carried and winched by cable 400 feet to the pinnacle, where they were assembled. Considerable innovation and ingenuity were employed by the builders in order to anchor the cabin to its granitic mountaintop foundation. Hidden Lake Peak Lookout was among the earliest of the L-4 Lookout Houses built on the Mt. Baker Forest and played a key role in fire detection and protection of eastern Skagit County and the Cascade Pass drainage. It was last used for emergency fire purposes in the late 1950's.

Early in the 1960's, the Skagit Alpine Club of Mt. Vernon approached the USDA Forest Service in pursuit of an abandoned lookout which they could work on and use for Club activities. After examining six such lookouts, they selected Hidden Lake Peak, secured a special use permit from the USDA Forest Service, and repaired and maintained the Lookout for the following 10 years. By 1980, the club chose to terminate this agreement and a small group of volunteers, called the Friends of Hidden Lake Lookout (a subsidiary of the Skagit Environmental Council), assumed maintenance and special use responsibilities. The Lookout is currently maintained by active volunteers, led by Dr. Fred T. Darvill, who contribute labor, materials and financial resources toward the preservation of the Lookout, which remains open to hikers and campers during the summer hiking season.

Statement of Significance

Hidden Lake Peak Lookout is one of two gable roof ("grange hall") style lookouts, the earliest of the Plan L-4 Lookout House types, which remain on the Mt. Baker-Snoqualmie Forest. These early lookout houses, constructed before 1932, when the Plan L-4 was revised, are the oldest remaining fire lookout buildings on Mt. Baker-Snoqualmie National Forest and represent a crucial part of a fire detection and suppression system which functioned for over 50 years to protect and conserve our timber and natural resources. This unaltered and well-maintained lookout represents a uniquely functional building type which was specifically designed for construction in such isolated and challenging terrain as Hidden Lake Peak.

**United States Department of the Interior  
National Park Service**

**National Register of Historic Places  
Inventory—Nomination Form**



Continuation sheet

Item number 7

Page 3 of 3

GEOGRAPHIC DATA:

Acreage: less than one acre

UTM Reference:

<u>Point</u>	<u>Zone</u>	<u>Easting</u>	<u>Northing</u>
A	10	632680	5372710

VERBAL BOUNDARY DESCRIPTION:

Hidden Lake Peak Lookout (Building #4062) is located in a portion of NW1/4 of NE1/4, Section 26, T.35N, R.12E, Willamette Meridian. Proposed nomination to include lookout house, related rock foundation and guy anchorage systems and immediate access trail within a 50 foot radius of the center of the Lookout per Green Trails map CASCADE PASS, WASH - NO 80.