



HISTORIC RESOURCES OF FAIRFIELD COUNTY, SC
ROCKTON AND RION RAILROAD HISTORIC DISTRICT
H. Carter Siegling, May 1984
South Carolina Railroad Museum
Columbia, South Carolina

Greenbrier School and Sprawls Fence - north
view #1 .



Historic Resources of Fairfield County, S.C.
Rockton and Rion Railroad Historic District
Nancy Fox, April 1984
Central Midlands Regional Planning Council
Columbia, South Carolina

Brooks Granite Company Office - northeast view
#3



Historic Resources of Fairfield County, S.C.
Rockton and Rion Railroad Historic District
Nancy Fox, April 1984
Central Midlands Regional Planning Council
Columbia, South Carolina

Brooks Granite Company Blacksmith Shop -
foreground #2 ; compressor house behind
#4



Historic Resources of Fairfield County, S.C.
Rockton and Rion Railroad Historic District
Nancy Fox, April 1984
Central Midlands Regional Planning Council
Columbia, South Carolina

Brooks Granite Company Finishing Plant -
southeast view #5



Historic Resources of Fairfield County, S.C.
Rockton and Rion Railroad Historic District
Nancy Fox, April 1984
Central Midlands Regional Planning Council
Columbia, South Carolina

Rion Granite Quarry, south face #6



Historic Resources of Fairfield County, S.C.
Rockton and Rion Railroad Historic District
Nancy Fox, April 1984
Central Midlands Regional Planning Council
Columbia, South Carolina

Rion Quarry Crush Stone Plant - looking southeast
#7



Historic Resources of Fairfield County, S.C.
Rockton and Rion Railroad Historic District
Nancy Fox, April 1984
Central Midlands Regional Planning Council
Columbia, South Carolina

Rion Quarry Machine Shop - south facade
#8



HISTORIC RESOURCES OF FAIRFIELD COUNTY, SC
ROCKTON AND RION RAILROAD HISTORIC DISTRICT
Nancy Fox, May 1984
Central Midlands Regional Planning Council

Rion Quarry Parts Shed - foreground,
northwest view #9.



Historic Resources of Fairfield County, S.C.
Rockton and Rion Railroad Historic District
Nancy Fox, April 1984
Central Midlands Regional Planning Council
Columbia, South Carolina

Rion Quarry welding shop - southeast view
#10



ALL
ITORS
SISTER
OFFICE

Historic Resources of Fairfield County, S.C.
Rockton and Rion Railroad Historic District
Nancy Fox, April 1984
Central Midlands Regional Planning Council
Columbia, South Carolina

Rion Quarry - Office, north facade,

#11



Historic Resources of Fairfield County, S.C.
Rockton and Rion Railroad Historic District
Nancy Fox, April 1984
Central Midlands Regional Planning Council
Columbia, South Carolina

Rion Quarry Magazine - east facade #12



Historic Resources of Fairfield County, S.C.
Rockton and Rion Railroad Historic District
Nancy Fox, April 1984
Central Midlands Regional Planning Council
Columbia, South Carolina

ROR Ry. Baldwin 712 facing east, #13



Historic Resources of Fairfield County, S.C.
Rockton and Rion Railroad Historic District
Nancy Fox, April 1984
Central Midlands Regional Planning Council
Columbia, South Carolina

ROR Ry. Saddletank Switcher facing east,
#14



Historic Resources of Fairfield County, S.C.
Rockton and Rion Railroad Historic District
Nancy Fox, April 1984
Central Midlands Regional Planning Council
Columbia, South Carolina

Phillips Granite Works Finishing Plant -
looking southwest #15



HISTORIC RESOURCES OF FAIRFIELD COUNTY, SC
ROCKTON AND RION RAILROAD HISTORIC DISTRICT

Nancy Fox, May 1984

Central Midlands Regional Planning Council

Phillips Granite Company Finishing Plant -
center northwest view #15



HISTORIC RESOURCES OF FAIRFIELD COUNTY, SC
ROCKTON AND RION RAILROAD HISTORIC DISTRICT
Nancy Fox, May 1984
Central Midlands Regional Planning Council

Phillips Granite Company Oil House -
southwest view #16



Historic Resources of Fairfield County, S.C.
Rockton and Rion Railroad Historic District
Nancy Fox, April 1984
Central Midlands Regional Planning Council
Columbia, South Carolina

Phillips Granite Works Finishing Plant Bath
House - east facade #17



Historic Resources of Fairfield County, S.C.
Rockton and Rion Railroad Historic District
Nancy Fox, April 1984
Central Midlands Regional Planning Council
Columbia, South Carolina

Phillips Granite Works Finishing Plant Dust
Collector Base - looking southwest #18



Historic Resources of Fairfield County, S.C.
Rockton and Rion Railroad Historic District
Nancy Fox, April 1984
Central Midlands Regional Planning Council
Columbia, South Carolina

Phillips Granite Works
south facade #19



Historic Resources of Fairfield County, S.C.
Rockton and Rion Railroad Historic District
Nancy Fox, April 1984
Central Midlands Regional Planning Council
Columbia, South Carolina

Phillips Granite Works Office #20



Historic Resources of Fairfield County, S.C.
Rockton and Rion Railroad Historic District
Nancy Fox, April 1984
Central Midlands Regional Planning Council
Columbia, South Carolina

Phillips Granite Works - Office #21



HISTORIC RESOURCES OF FAIRFIELD COUNTY, SC
ROCKTON AND RION RAILROAD HISTORIC DISTRICT

Nancy Fox, May 1984

Central Midlands Regional Planning Council

Rockton and Rion Engine House #23



HISTORIC RESOURCES OF FAIRFIELD COUNTY, SC
ROCKTON AND RION RAILROAD HISTORIC DISTRICT

Nancy Fox, May 1984

Central Midlands Regional Planning Council

Anderson Quarry Compressor House - southwest
view #32



HISTORIC RESOURCES OF FAIRFIELD COUNTY, SC
ROCKTON AND RION RAILROAD HISTORIC DISTRICT
Nancy Fox, May 1984
Central Midlands Regional Planning Council

Left to right: Anderson Quarry Pump House,
Water Tanks, Switch House #35, 34, 33



HISTORIC RESOURCES OF FAIRFIELD COUNTY, SC
ROCKTON AND RION RAILROAD HISTORIC DISTRICT

Nancy Fox, May 1984

Central Midlands Regional Planning Council

Winnsboro Granite Company Office, southeast
facade #36



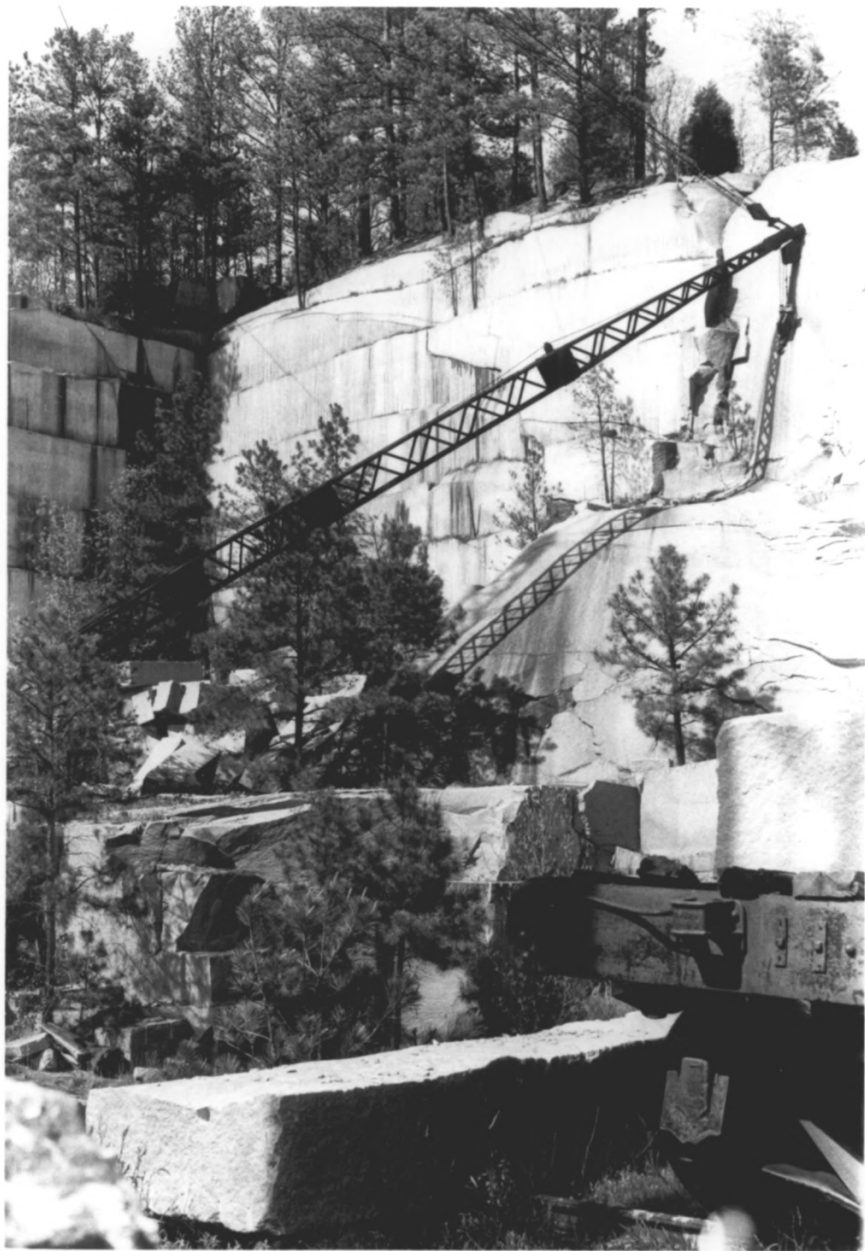
HISTORIC RESOURCES OF FAIRFIELD COUNTY, SC
ROCKTON AND RION RAILROAD HISTORIC DISTRICT
Nancy Fox, May 1984
Central Midlands Regional Planning Council

Anderson Quarry Pipe House - southeast view
#37



Historic Resources of Fairfield County, S.C.
Rockton and Rion Railroad Historic District
Nancy Fox, April 1984
Central Midlands Regional Planning Council
Columbia, South Carolina

Anderson Quarry left face looking north
#39



Historic Resources of Fairfield County, S.C.
Rockton and Rion Railroad Historic District
Nancy Fox, April 1984
Central Midlands Regional Planning Council
Columbia, South Carolina

Anderson Quarry right face looking north

#39.



Historic Resources of Fairfield County, S.C.
Rockton and Rion Railroad Historic District
Nancy Fox, April 1984
Central Midlands Regional Planning Council
Columbia, South Carolina

Earle Eisenhower Residence, southeast view,
Anderson Quarry #41



Historic Resources of Fairfield County, S.C.
Rockton and Rion Railroad Historic District
Nancy Fox, April 1984
Central Midlands Regional Planning Council
Columbia, South Carolina

Ernest Miner Residence, east facade,
Anderson Quarry #42



Historic Resources of Fairfield County, S.C.
Rockton and Rion Railroad Historic District
Nancy Fox, April 1984
Central Midlands Regional Planning Council
Columbia, South Carolina

Ernest Miner Residence Garage, northeast
view, Anderson Quarry #42



Historic Resources of Fairfield County, S.C.
Rockton and Rion Railroad Historic District
Nancy Fox, April 1984

Central Midlands Regional Planning Council
Columbia, South Carolina

C. E. Glover Residence, southwest view,
Anderson Quarry #43



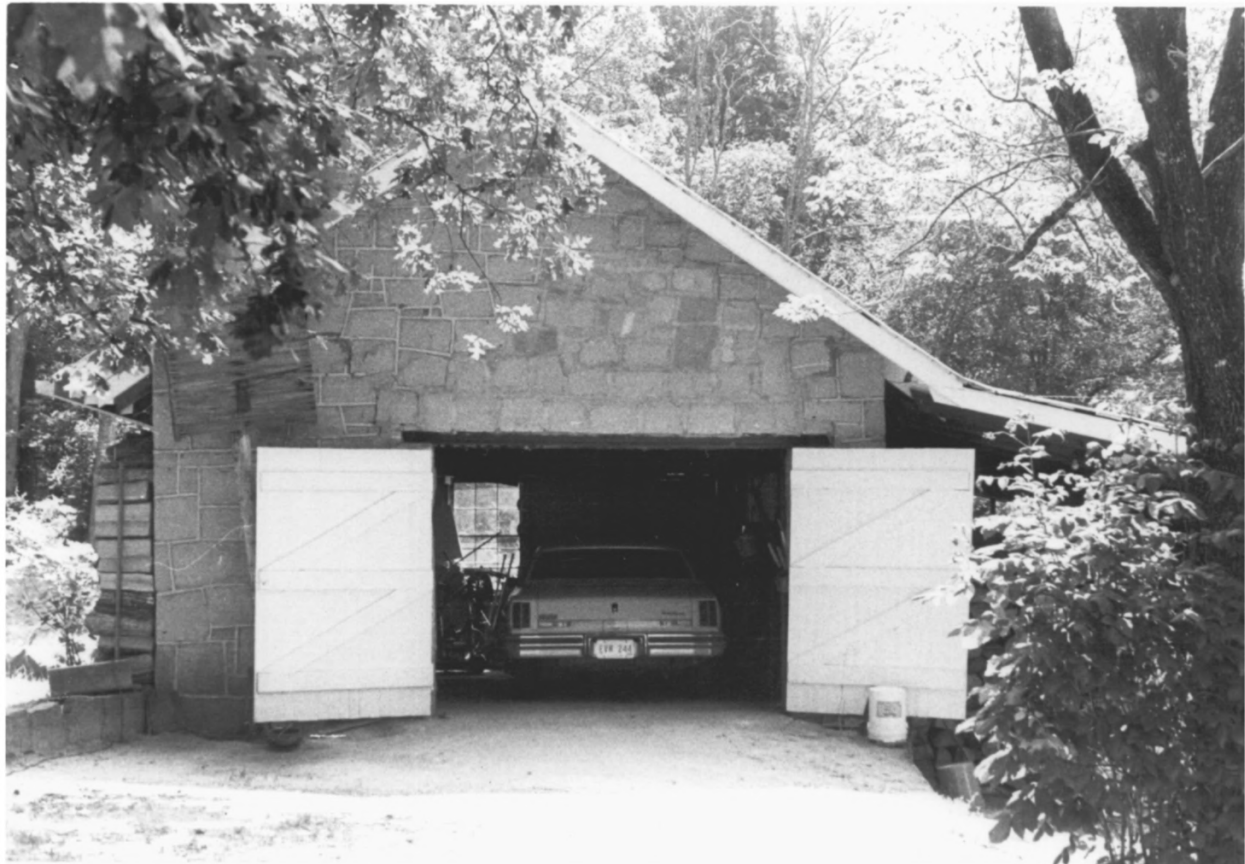
Historic Resources of Fairfield County, S.C.
Rockton and Rion Railroad Historic District
Nancy Fox, April 1984
Central Midlands Regional Planning Council
Columbia, South Carolina

Hobgood-Sellers Residence, southwest view,
Anderson Quarry #44



Historic Resources of Fairfield County, S.C.
Rockton and Rion Railroad Historic District
Nancy Fox, April 1984
Central Midlands Regional Planning Council
Columbia, South Carolina

Hobgood-Sellers Residence Pump House, west
view, Anderson Quarry #44



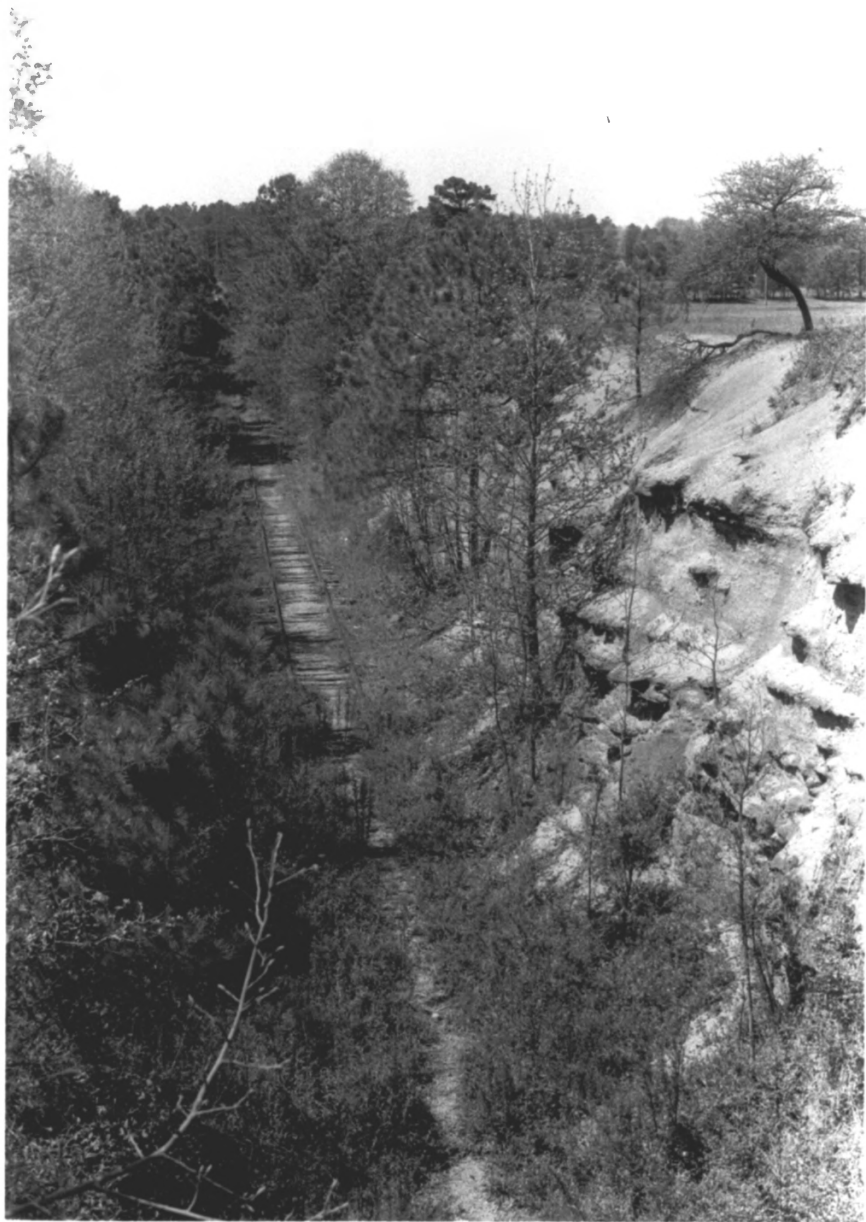
HISTORIC RESOURCES OF FAIRFIELD COUNTY, SC
ROCKTON AND RION RAILROAD HISTORIC DISTRICT
Nancy Fox, May 1984
Central Midlands Regional Planning Council

Hobgood-Sellers Garage - west facade #44



Historic Resources of Fairfield County, S.C.
Rockton and Rion Railroad Historic District
Nancy Fox, April 1984
Central Midlands Regional Planning Council
Columbia, South Carolina

John Sapp Residence, southeast view,
Anderson Quarry #45



Historic Resources of Fairfield County, S.C.
Rockton and Rion Railroad Historic District
Nancy Fox, April 1984
Central Midlands Regional Planning Council
Columbia, South Carolina

Rockton and Rion Railroad #47



Historic Resources of Fairfield County, S.C.
Rockton and Rion Railroad Historic District
Nancy Fox, April 1984
Central Midlands Regional Planning Council
Columbia, South Carolina

Anderson Quarry blacksmith shop - southeast
view #46