



CHAIN BRIDGE ROAD SCHOOL
2820 CHAIN BRIDGE ROAD, NW
WASHINGTON, D.C. 20016

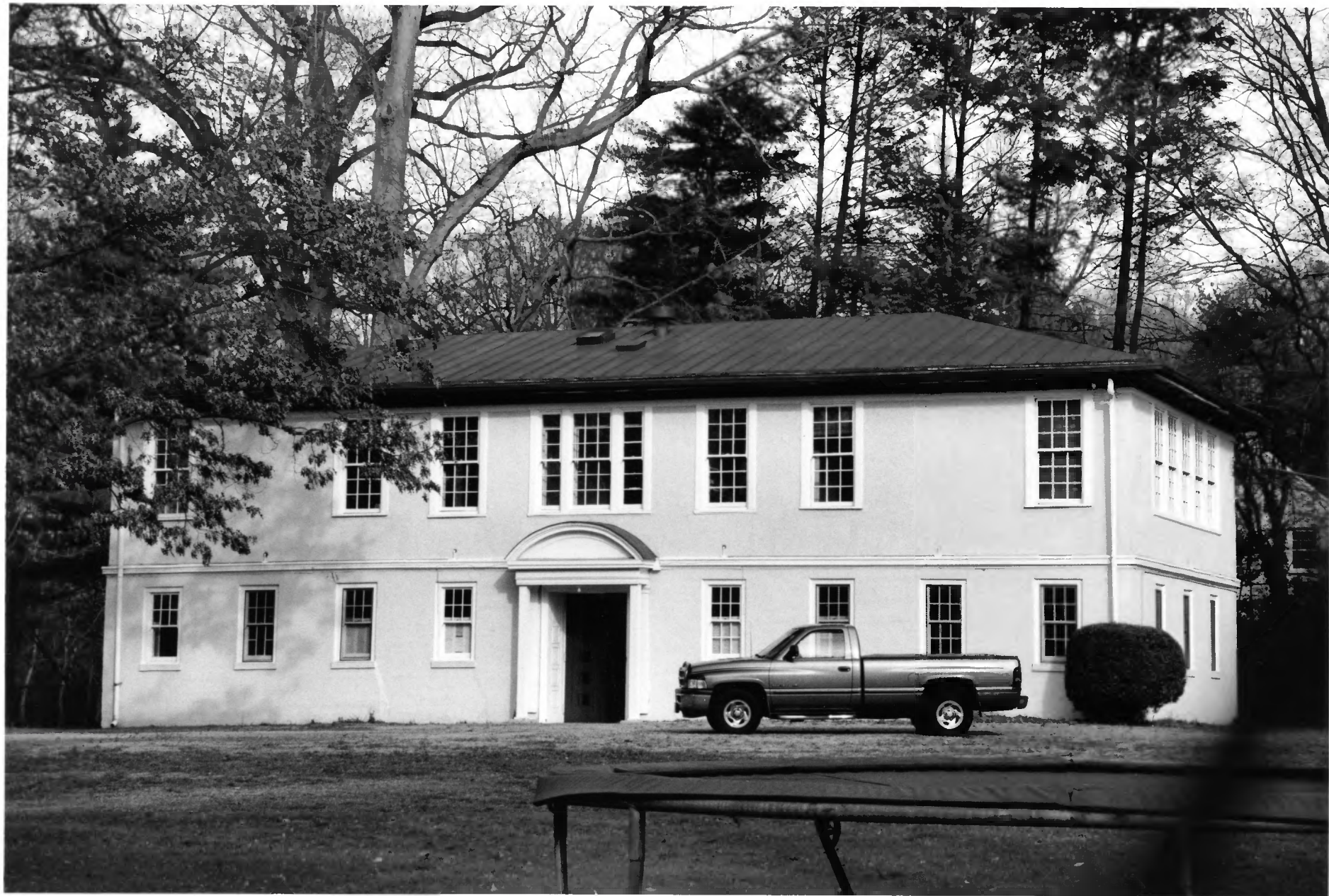
EHT TRACERIES, INC

FEBRUARY 2002

DC SHPO

VIEW LOOKING NORTH

1 OF 5



CHAIN BRIDGE ROAD SCHOOL
2820 CHAIN BRIDGE ROAD, N.W.
WASHINGTON, D.C. 20016

EHT TRACERIES, INC

FEBRUARY 2002

DC SHPO

FACADE, VIEW LOOKING NORTH

2 OF 5



NO
TRESPASSING

CHAIN BRIDGE ROAD SCHOOL
2820 CHAIN BRIDGE ROAD, N.W.
WASHINGTON, D.C. 20016

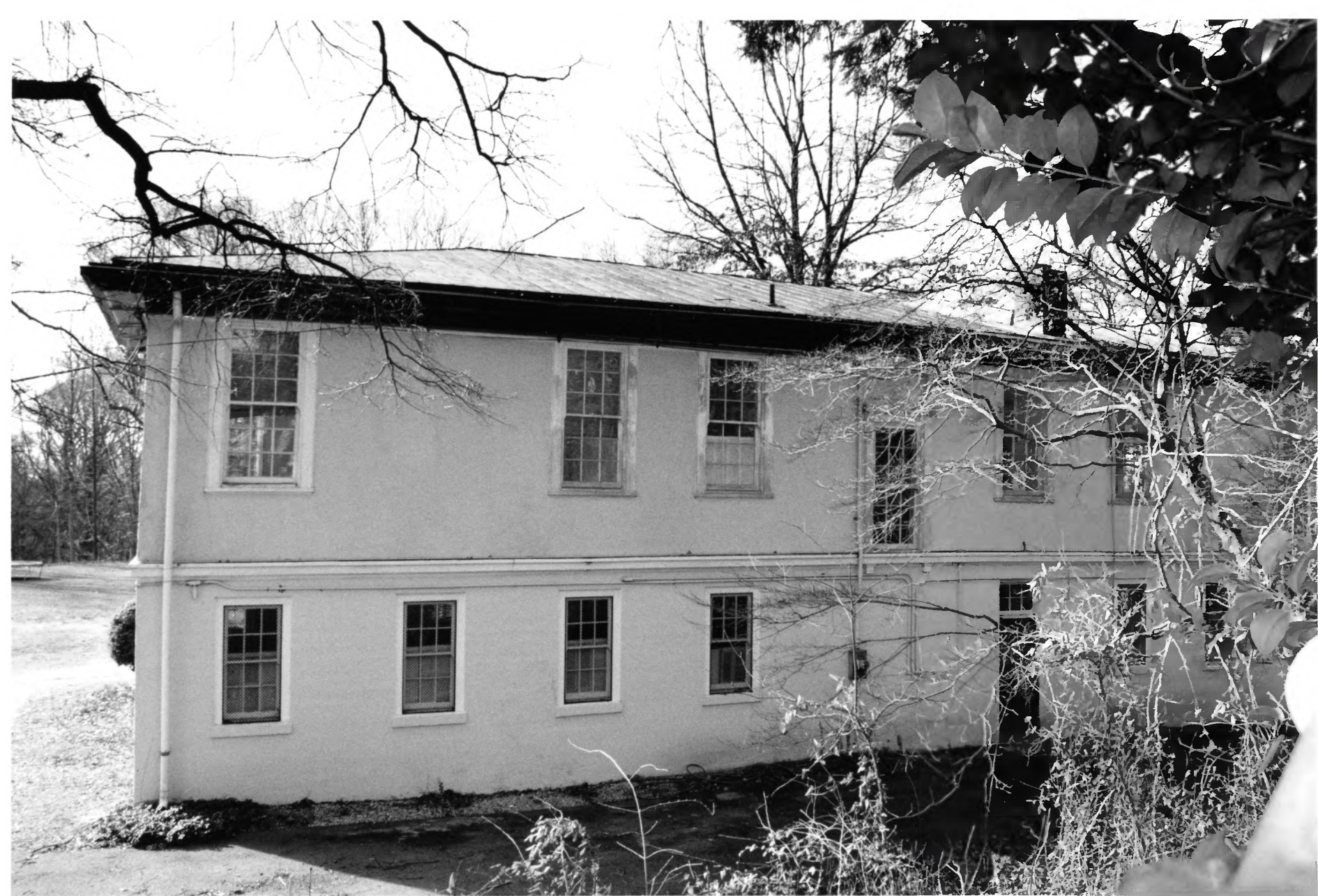
EHT TRACERIES, INC.

FEBRUARY 2002

DC SHPO

NORTHEAST CORNER, LOOKING SOUTHWEST

3 OF 5



CHAIN BRIDGE ROAD SCHOOL
2820 CHAIN BRIDGE ROAD, N.W.
WASHINGTON, D.C. 20016

EHT TRACERIES, INC

FEBRUARY 2002

DC SHPO

NORTHEAST CORNER, LOOKING SOUTHWEST

4 OF 5



CHAIN BRIDGE ROAD SCHOOL

2820 CHAIN BRIDGE ROAD, N.W.

WASHINGTON, D.C.

EHT TRACERIES, INC.

FEBRUARY 2002

DC SHPO

NORTHWEST CORNER, LOOKING EAST

5 OF 5