

079600077

**United States Department of the Interior**  
National Park Service

**National Register of Historic Places**  
**Continuation Sheet**

Wheatland Railroad Depot
Name of Property
Platte County, WY
County and State
Name of multiple listing (if applicable)

Section number   N/A   Page   1  

The Wheatland Railroad Depot in Platte County, Wyoming, was listed in the National Register on February 16, 1996 for its local significance in transportation. Unfortunately the depot building has been demolished. The materials were removed from the property and the site is now vacant. As a result of the demolition the property has lost the qualities for which it was listed. Therefore, the Wheatland Railroad Depot should be removed from the National Register



**United States Department of the Interior**  
National Park Service

**National Register of Historic Places**  
**Continuation Sheet**

Wheatland Railroad Depot
Name of Property
Platte County, WY
County and State
Name of multiple listing (if applicable)

Section number   N/A   Page     2    



Photo taken spring, 2017, showing former location of the Wheatland Railroad Depot.



**United States Department of the Interior**  
National Park Service

**National Register of Historic Places**  
**Continuation Sheet**

Wheatland Railroad Depot
Name of Property
Platte County, WY
County and State
Name of multiple listing (if applicable)

Section number   N/A   Page     3    



Photo taken spring, 2017, showing former location of Wheatland Railroad Depot.

**United States Department of the Interior**  
National Park Service

**National Register of Historic Places**  
**Continuation Sheet**

Wheatland Railroad Depot
Name of Property
Platte County, WY
County and State
Name of multiple listing (if applicable)

Section number   N/A   Page     4    



Photo taken spring, 2017, showing former location of Wheatland Railroad Depot.



UNITED STATES DEPARTMENT OF THE INTERIOR  
NATIONAL PARK SERVICE

NATIONAL REGISTER OF HISTORIC PLACES  
EVALUATION/RETURN SHEET

Requested Action:

Property Name:

Multiple Name:

State & County:

Date Received: 7/21/2017      Date of Pending List: 8/16/2017      Date of 16th Day: 8/31/2017      Date of 45th Day: 9/5/2017      Date of Weekly List:

Reference number:

Nominator:

Reason For Review:

Accept       Return       Reject      9/5/2017 Date

Abstract/Summary Comments:

Recommendation/ Criteria

Reviewer Edson Beall  Discipline Historian

Telephone \_\_\_\_\_ Date 9.5.17

DOCUMENTATION:    see attached comments : No    see attached SLR : No

If a nomination is returned to the nomination authority, the nomination is no longer under consideration by the National Park Service.

United States Department of the Interior  
National Park Service

# National Register of Historic Places Continuation Sheet

Section number \_\_\_\_\_ Page \_\_\_\_\_

---

### SUPPLEMENTARY LISTING RECORD

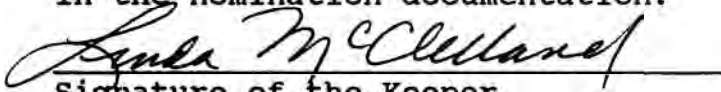
NRIS Reference Number: 96000077      Date Listed: 2/16/96

Property Name: Wheatland Railroad Depot

County: Platte      State: Wyoming

none  
Multiple Name

-----  
This property is listed in the National Register of Historic Places in accordance with the attached nomination documentation subject to the following exceptions, exclusions, or amendments, notwithstanding the National Park Service certification included in the nomination documentation.

  
Signature of the Keeper

February 16, 1996  
Date of Action

=====  
Amended Items in Nomination:

Section 8. Significance

"1965" and "1969" are, hereby, removed from the significant dates, because they are outside of the period of significance of the property, 1895-1945.  
-----

Sheila Bricker-Wade, National Register coordinator, Wyoming State Historic Preservation Office was notified of this amendment on February 15, 1996.

---

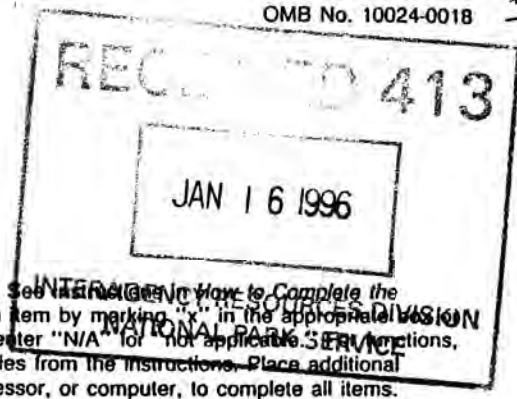
**DISTRIBUTION:**

- National Register property file
- Nominating Authority (without nomination attachment)

77

United States Department of the Interior  
National Park Service

National Register of Historic Places  
Registration Form



This form is for use in nominating or requesting determinations for individual properties and districts. See instructions on how to complete the National Register of Historic Places Registration Form (National Register Bulletin 16A). Complete each item by marking "X" in the appropriate box, or by entering the information requested. If an item does not apply to the property being documented, enter "N/A" for not applicable. For architectural classification, materials, and areas of significance, enter only categories and subcategories from the instructions. Place additional entries and narrative items on continuation sheets (NPS Form 10-900a). Use a typewriter, word processor, or computer, to complete all items.

1. Name of Property

historic name Wheatland Railroad Depot

other names/site number 48PL995

2. Location

street & number 701 Gilchrist Avenue  not for publication

city or town Wheatland  vicinity

state Wyoming code WY county Platte code 031 zip code 82201

3. State/Federal Agency Certification

As the designated authority under the National Historic Preservation Act, as amended, I hereby certify that this  nomination  request for determination of eligibility meets the documentation standards for registering properties in the National Register of Historic Places and meets the procedural and professional requirements set forth in 36 CFR Part 60. In my opinion, the property  meets  does not meet the National Register criteria. I recommend that this property be considered significant  nationally  statewide  locally. ( See continuation sheet for additional comments.)

John J. Keck 12/11/95  
Signature of certifying official/Title Date  
State Historic Preservation Officer  
State of Federal agency and bureau

In my opinion, the property  meets  does not meet the National Register criteria. ( See continuation sheet for additional comments.)

\_\_\_\_\_  
Signature of commenting official/Title Date  
\_\_\_\_\_  
State or Federal agency and bureau

4. National Park Service Certification

- I hereby certify that the property is:
- entered in the National Register.  
 See continuation sheet.
- determined eligible for the National Register  
 See continuation sheet.
- determined not eligible for the National Register.
- removed from the National Register.
- other, (explain): \_\_\_\_\_

Signature of the Keeper Sandra M. Cellard Date of Action 2/16/96

Wheatland Railroad Depot

Platte County, Wyoming

Name of Property

County and State

5. Classification

Ownership of Property  
(Check as many boxes as apply)

Category of Property  
(Check only one box)

Number of Resources within Property  
(Do not include previously listed resources in the count.)

- private
- public-local
- public-State
- public-Federal

- building(s)
- district
- site
- structure
- object

Contributing          Noncontributing

One \_\_\_\_\_ buildings

\_\_\_\_\_ sites

\_\_\_\_\_ structures

\_\_\_\_\_ objects

One \_\_\_\_\_ Total

Name of related multiple property listing  
(Enter "N/A" if property is not part of a multiple property listing.)

Number of contributing resources previously listed  
in the National Register

N/A

None

6. Function or Use

Historic Functions  
(Enter categories from instructions)

Current Functions  
(Enter categories from instructions)

Transportation, rail-related

Vacant/Not In Use

7. Description

Architectural Classification  
(Enter categories from instructions)

Materials  
(Enter categories from instructions)

Other/standard railroad plans

foundation Stone

walls Brick

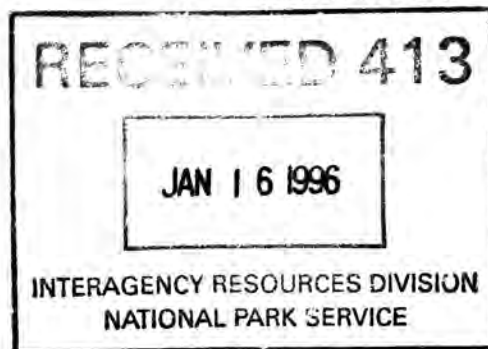
roof Asphalt

other

Narrative Description

(Describe the historic and current condition of the property on one or more continuation sheets.)



United States Department of the Interior  
National Park ServiceNational Register of Historic Places  
Continuation SheetSection number 7 Page 1

Wheatland Railroad Depot

Platte County, Wyoming

Narrative Description

The Wheatland Depot is a rectangular one story building, built of brick from foundation to eaves. It measures 24' x 88' with a 3' x 11' protruding bay at the Station Master's desk. The depot was built in two phases. The original structure, completed in January, 1895, measured 24' by 48'. In August, 1916, a 24' x 40' freight room was added to the south, built with the same locally made brick. The depot is topped with a gable roof supported by nine ornamental brackets on each side. A gabled dormer extends over the bay window area.

The Depot is situated at the east end of Wheatland's original "main street", Gilchrist Avenue, at its junction with the tracks. At the time it was a booming strip of false front shops and saloons with the new Globe hotel, a three story brick building, built across the street.

The Depot consists of four rooms laid out in a row. The waiting room is on the north, the Station Master's office with bay window next, then the express room for packages, ending with the large freight room on the south. Toilet facilities, now gone, consisted of two outhouses in the railroad yard.

The walls, 12" thick, are constructed of three wythes of brick on a foundation of local rock and beams. The roof was originally covered with cedar shingles. The shingles and decking have been replaced with a temporary roof of chip-board covered with asphalt rolled-roofing.

Fenestration consists of nine large double-hung windows, 6 panes over 6, most measuring 39" x 78", plus two double-hung single-pane windows, 15" x 78" forming the sides of the bay section. There is a two-pane transom over the passenger entry door. A double-hinged door opens to the tracks from the express room.

The freight room has three large cross back sliding doors, two of which have small windows in them. There are also two small fixed sash windows on the east wall of the freight room.

Early photographs show that a raised decking once surrounded the building, at loading dock height to the south, at ground level on the north. Today this decking is gone. A loading dock, measuring 80' by 110', abuts the building on the south end.

United States Department of the Interior  
National Park Service

National Register of Historic Places  
Continuation Sheet

Section number 7 Page 2

Wheatland Railroad Depot

Platte County, Wyoming

Interior

The waiting room and Station Master's office are finished with tongue-in-groove wainscoting to 49", topped with a chair rail. Above that the brick is plastered to the ceiling. Lathe and plaster cover the ceiling and interior walls. The trim is simple, a six inch baseboard with quarter rounds along the floor and at the joints. Window trim is Victorian in style, six inches wide, with five ridges running down the center. The floor is maple tongue-in-groove, 3 1/2" wide.

A pot-bellied stove heated the waiting room, another in the Station Master's office, and a third in the express room. These stoves are no longer present.

Two ticket windows separate the waiting room from the Station Master's office.

The freight room is unfinished on the interior. Its floor is of 2 x 11 planks.

Present Condition

The deterioration of the depot began with a train derailment during the 1960's. A quick stop caused several empty ore cars to leap from the tracks, one colliding with the bay. The brick was damaged and continues to bulge. The area was covered with stucco.

Around 1969 the railroad office moved into a new metal building some distance to the north. The depot was leased for storage and the loading dock used for the unloading of farm equipment. Since then the building has essentially been vacant.

Youth and transients had frequented the building. The freight room was set on fire some years ago. The structure was saved and minimal repairs were made, including a white paint job. Most of the windows were broken out and there were gaping holes in the roof.

Because of its condition, the Town of Wheatland issued a "Repair or Abate" order to the owner in August, 1994, requesting that it be torn down. To meet the town's objections and to prevent the raising of the depot, volunteers covered the windows with chip

United States Department of the Interior  
National Park Service

National Register of Historic Places  
Continuation Sheet

Section number 7 Page 3

Wheatland Railroad Depot

Platte County, Wyoming

board and the owner removed the shingles and sheathing, replacing it with chip board and temporary rolled roofing. The two chimneys were removed to roof level and covered over. The town then rescinded its order.

A. Sayre Hutchinson, Historical Architect with the National Park Service, visited the site in August, 1994. He wrote, "We found the Depot to be quite charming, in remarkably good condition, and definitely worthy of preservation."

The interior, except for an institutional green paint job and falling plaster, is just like it was in 1895, sans furnishings. The wooden windows can be largely restored. The brick work is also repairable. The rock foundation is sound.



8. Statement of Significance

Applicable National Register Criteria

(Mark "x" in one or more boxes for the criteria qualifying the property for National Register listing.)

- Property is associated with events that have made a significant contribution to the broad patterns of our history.
Property is associated with the lives of persons significant in our past.
Property embodies the distinctive characteristics of a type, period, or method of construction or represents the work of a master, or possesses high artistic values, or represents a significant and distinguishable entity whose components lack individual distinction.
Property has yielded, or is likely to yield, information important in prehistory or history.

Criteria Considerations

(Mark "x" in all the boxes that apply.)

Property is:

- owned by a religious institution or used for religious purposes.
removed from its original location.
a birthplace or grave.
a cemetery.
a reconstructed building, object, or structure.
a commemorative property.
less than 50 years of age or achieved significance within the past 50 years.

Areas of Significance

(Enter categories from instructions)

Criterion A: Transportation

Period of Significance

Criterion A: 1895-1945

Significant Dates

1895 Depot Construction
1965 Termination of Passenger Service
1969 Closure of Depot

Significant Person

(Complete if Criterion B is marked above)

Cultural Affiliation

Architect/Builder

Denver & Gulf Railroad
Charlie Goodrich

Narrative Statement of Significance

(Explain the significance of the property on one or more continuation sheets.)

9. Major Bibliographical References

Bibliography

(Cite the books, articles, and other sources used in preparing this form on one or more continuation sheets.)

Previous documentation on file (NPS):

- preliminary determination of individual listing (36 CFR 67) has been requested
previously listed in the National Register
previously determined eligible by the National Register
designated a National Historic Landmark
recorded by Historic American Buildings Survey
recorded by Historic American Engineering Record

Primary location of additional data:

- State Historic Preservation Office
Other State agency
Federal agency
Local government
University
Other

Name of repository:

United States Department of the Interior  
National Park ServiceNational Register of Historic Places  
Continuation SheetSection number 8 Page 4

Wheatland Railroad Depot

Platte County, Wyoming

Narrative Statement of Significance

## Summary

The town of Wheatland, Wyoming and the neighboring farming district owe their existence to two events: the bringing of irrigation water through the Wheatland tunnel and the arrival of the railroad. Water made crops grow. The railroad made crops profitable. The Wheatland depot, little changed from its construction in 1895, was the point of arrival for most settlers and the point of departure for the area's products, sugar beets, wheat, cattle and produce. Until its closure in 1969, the Wheatland depot was a focal point of commerce. The building represents much of the locality's early history. The depot is one of three prominent commercial buildings of that period remaining, the others being the former headquarters of the Wheatland Colony and the Carey Building.

## Narrative

The topography of what is now Wheatland's farming district--the flats--was a barren, high desert of cactus, soap weed and sagebrush. Fur trappers skirted the place, following the river bottoms. Oregon Trail travelers passed by on the north. Outposts of the huge Swan Land and Cattle Company, along with other small ranches, were established on its edges. The flats were uninhabited.

An early settler, T.H. McGee wrote that in 1856 the region was "nothing but mud flats, horned toads and bullallos (sic). I wouldn't have taken the whole thing for a gift if you had offered it to me. It was the most desolate place I ever saw."

Johnny Gordon, a poet, fiddlemaker, and an 1878 homesteader at Uva, on the northeast edge of the area, changed all that. While hunting he saw that the flats, because they were flat, were ideal for irrigation. He imagined a fertile plain, watered with criss-crossing canals.

In 1881 Gordon discussed his ideas with his friend, Judge Joseph M. Carey, a former judge then ranching along the North Platte. Carey hired G.E. Bailey, a civil engineer, to map an irrigation plan, "Lands of the Sybille Colony". It was feasible.

United States Department of the Interior  
National Park ServiceNational Register of Historic Places  
Continuation SheetSection number 8 Page 5

Wheatland Railroad Depot

Platte County, Wyoming

Carey enlisted the support of six men prominent in the territory: Horace Plunkett, the son of Lord Dunsany of Ireland; John Hoyt, Wyoming territorial governor from 1878 to 1882; Morton Post, business man and territorial delegate to the U.S. Congress; Francis E. Warren, businessman, cattleman and Treasurer of the Territory; William C. Irvine, stockman and Territorial Legislator; and Andrew Gilchrist, Scottish-born President of the Stock-grower's National Bank and member of the Wyoming House of Representatives. They incorporated the Wyoming Development Company on May 17, 1883 with the hopes of profiting through the sale of stock and the investment in property, and through the ancillary business the settlers would bring.

Stock was sold. Water rights were obtained from the Laramie River. The plan called for the drilling of a 3,100' tunnel to divert the water into Bluegrass Creek, then into Sybille Creek, where it would be divided into a network of canals covering the renamed "Wheatland flats". The tunnel and the two major canals were finished by the fall of 1883, capable of irrigating 58,000 acres.

The Company's plans, according to its articles of incorporation, were to "lay out a town and supply it with water, together with any railways, tramways, mills or factories that might be necessary."<sup>2</sup>

Efforts were begun to recruit settlers to homestead the government owned flats. The process was slow and cumbersome.

During this time Cheyenne's businessmen, 70 miles to the south, were hurting. Cheyenne had lost its position as the railhead for northern Wyoming and Montana cattle as Northern Pacific Railroad was constructed across southern Montana in 1883. Then in 1885 the Fremont, Elkhorn and Missouri Valley Railroad reached Chadron, Nebraska, taking the northeastern Wyoming trade. In 1886 the Wyoming Central Railway was organized to extend a line from Chadron directly through central Wyoming.

Cheyenne citizens were roused to act. Francis Warren and others incorporated The Cheyenne and Northern Railway Company on March 1, 1886. William Irvine became president. A county bond issue was passed by the voters for \$400,000 to help fund the rail line north through central Wyoming, serving the Big Horn Basin, on to Billings, Montana, north to the "southern boundary line of British America."<sup>3</sup> Warren and Carey served as trustees. Within two months the Union Pacific agreed to subscribe to a majority of the Cheyenne



United States Department of the Interior  
National Park ServiceNational Register of Historic Places  
Continuation SheetSection number 8 Page 6

Wheatland Railroad Depot

Platte County, Wyoming

& Northern's capital stock, running the northern line.

Construction began that summer, extending 50 miles of track by year's end. They reached the Wheatland flats in July 1887. Track continued on to Wendover where it joined The Wyoming Central. Despite the desires of some Cheyenne businessmen to continue north to compete with the other railroads, Union Pacific, now in control, decided it would not be profitable. "There is nothing upon which to base a proposal of remunerative business."

The Wheatland Colony, however, had its railroad. The previous planned town site of "Wheatfield" near Rock Lake was scratched. A new one, "Wheatland" was selected further east, along the tracks.

Work on the Colony itself was moving slowly. In order to get the land into the hands of settlers, each needed to homestead a section (640 acres) under the terms of the Desert Land Act of 1877, apply water, "prove up" his or her homestead and receive patent to his land. Then the homesteader faced a choice. He could keep the land and contract with the Development Company for water or he could sell the land, either to the Company or to others. This process took time.

Thirteen "entrymen" filed on claims to the flats from 1880 to 1888, covering only 7,320 acres.

During these years the U.S. Commissioner of Public Lands began investigating abuses and illegalities throughout the West. In its efforts to tighten up the situation, the Land Act of October 2, 1888, was passed which removed irrigable land from entry. Areas could be reopened only under the direction of the President. This brought the progress of the Wheatland Colony to a standstill.

Three years later the impasse was broken with the passage of the Revision Act of March 3, 1891. Claims could be filed on irrigated developments and associations were permitted. Between 1888 and 1895 eighty-nine entrymen made filings. Nearly all of these signed their rights back to the Wyoming Development Company for one dollar.

With the Development Company now in ownership of the land, the water flowing and a railroad line in operation, the boom was on.

During the summer of 1894 Wheatland lots were auctioned. Stores

United States Department of the Interior  
National Park ServiceNational Register of Historic Places  
Continuation SheetSection number 8 Page 7

Wheatland Railroad Depot

Platte County, Wyoming

and saloons were thrown together. "The Globe", a grand hotel was built near the tracks. A newspaper began, The Wheatland World. And the railroad depot was to be built.

Construction of the depot coincided with the paper's first issue. It is carefully chronicled with characteristic boosterism in successive issues of paper:

October 19, 1894

W.C. Saunders, trainmaster for the Denver & Gulf, and H.W. Cowan, engineer for the road, arrived in the city Monday, in company with J.A. Johnston president of the Wyoming Development company, and proceeded to locate a depot for Wheatland. The site selected is at the foot of Gilchrist Avenue, on the west side of the main track. The new depot will be 24x60 feet; the walls will be built of brick, and the inside will be handsomely finished and arranged. Work will be commenced at once, and when completed Wheatland can boast of one of the best depots on the Denver & Gulf road.

[Note: The Cheyenne & Northern was operated by Union Pacific from 1887-1890. In 1890 the Union Pacific Denver and Gulf Railway Company was founded, a consolidation of several railroads including the Cheyenne and Northern and The Colorado Central. This system went into receivership in 1893 but continued to operate. The Colorado and Southern was formed and took possession of most of the system on December 29, 1898.]

Wm. Hightower, Henry Ryan and several others went up to Platte River Canon Wednesday, to get out rock for the foundation to the new depot.

November 2, 1894

Engineer Cowan, of the Denver & Gulf, was in town Monday and completed the work of location the new depot. Work on the building will be begun next week.

When the new depot is completed, a side track will be put in on this side of the depot and extending some thirty rods along the main track. Better shipping facilities have been very badly needed here the past season and the new order of things will be gladly received.

November 21, 1894

United States Department of the Interior  
National Park ServiceNational Register of Historic Places  
Continuation SheetSection number 8 Page 8

Wheatland Railroad Depot

Platte County, Wyoming

The Denver & Gulf carpenters have the wood work to the depot about completed. Plastering is about all there is to be done to the building.

November 30, 1894

The warm, pleasant weather of the past ten days has been most favorable for builders and it has been generally improved. If winter remains away much longer Wheatland will enjoy a regular building boom.

H.W. Cowan, head engineer for the Gulf, accompanied by W.W. - Wood and M. Baum, of Denver, was in town Saturday completing the survey and arrangements for the new depot.

Contractor Goodrich is putting up the brick work to the new depot this week. Next week H.A. Miller's restaurant building will be put up. Thus goes on the pioneer work of building up one of the best towns of Wyoming.

December 7, 1894

The new depot is about completed. It is one of the nicest structures of the kind on the road, and will be much appreciated by Wheatlandites. The freight room is raised several feet higher than the main body of the building, and is provided with a landing correspondingly raised, so that freight can easily be loaded or unloaded. The waiting room, which is at the north end of the building, will be of ample proportions and is so constructed that it will be a pleasant apartment.

January 4, 1895

The depot, since it has been given the finishing strokes, presents an neat and attractive appearance, the inside wood-work being finished in oil. Hall & Daily have been doing the plastering.

January 11, 1895

Wheatland is now an established station in the railroad kingdom. Auditor Glenn, of the Denver & Gulf, came over the road Wednesday and stopping at Uva gobbled up Davie Brice, baggage, office fixtures and all, and transferred them to Wheatland, where Mr. Brice is now domiciled in the neatest, largest and best depot on the road.

January 25, 1895



United States Department of the Interior  
National Park ServiceNational Register of Historic Places  
Continuation SheetSection number 8 Page 9

Wheatland Railroad Depot

Platte County, Wyoming

The trains on the Cheyenne & Northern began stopping at Wheatland for meals the first of the week, and hereafter passengers will be held here 20 minutes. This is of big advantage to Mr. Wallace as it will materially improve business at the Globe hotel, and incidentally will be a benefit to the town as a whole as it will give travelers and opportunity to hastily take a look at the most growing, progressive community in the west.

With the depot in place promotion began in earnest.

"There appeared in Eastern agricultural districts, circulars describing a land where there was no failure of crops and other blessings too numerous to mention, and soon excursions of prospective land buyers were brought in."

The circulars read:

Good Land, Cheap Homes, Easy Terms, at Wheatland, Wyoming. The Wheatland Colony is situated 96 miles north of Cheyenne on the Cheyenne and Northern railroad. The lands are owned by the Wyoming Development Company and comprise 60,000 acres of the most fertile land to be found anywhere in the west. These lands are traversed by three large irrigating ditches, which are so constructed that they can carry the full volume of the Laramie river if necessary. .. With these safeguards there are no chances of failure for the settler to encounter, and a farm well tilled is certain to bring its owner profitable returns, etc, etc?

The agent for the development company, J.R. Mason, brought in scores of prospects via the Denver & Gulf. Thousands of acres were sold within a few years. By 1895 the population had reached 1,315.

The pivotal role the depot played in the endeavor is noted in some of the pioneering families' memoirs:

It so happened that Hazelle (Merrill) came to Wheatland in 1902, arriving on July 4th. The train came in at 10:30 in the morning at that time, and because the town was celebrating the 4th, the Band was at the depot to welcome the passengers from the train. Now Wheatland was 8 years old at the time, and I have a picture in the scrap book which is about the way it looked that day in 1902.

United States Department of the Interior  
National Park ServiceNational Register of Historic Places  
Continuation SheetSection number 8 Page 10

Wheatland Railroad Depot

Platte County, Wyoming

Frank and Corabelle [Windom] moved to then Laramie County in February of 1903. They bought 40 acres of Carey Act Land from the Wyoming Development Co. They came to farm, but found their land, located just east of the Wheatland Reservoir, to be all rock. They never raised a crop on it. They had come by train, and in three freight cars Frank and Corabelle brought machinery, horses, cows, pigs and chickens from Nodaway, Iowa.<sup>7</sup>

Many of the settlers were of foreign birth, purchasing land in Wheatland after a temporary stay somewhere else in the West. George Fertig, his wife and four children, came from Russia to land they had purchased in Mexico, then to Enid, Oklahoma, to Topeka, Kansas to Wellington, Colorado to Fort Collins, Colorado. "From there George came to Wheatland on a train in the spring of 1905 in the search for land, and bought the land above Festo Lake..."<sup>8</sup>

In 1908, the Woolseys came by train [from Kansas] to live in Wheatland. They purchased 40 acres 6 miles southwest of Wheatland.... Being a restless man, C.V. left Wheatland in the year 1912. They sold their possessions and land and departed by train for Florida to make their home, later returning to Kansas for a short stay, and then back to Wheatland for their final home!<sup>1</sup>

My brother-in-law, Irwin Searls, and I [Oscar Throckmorton] came by train in August 1913, to file on a homestead, then went back to Oklahoma for our families. We had a sale and loaded up a freight car with supplies and headed for Wyoming.<sup>18</sup>

Wyoming Governor Jim Geringer's Grandfather, Gottlieb Geringer, Sr., left the Volga region of Russia, to come to eastern Colorado. For ten years they worked fields and canneries, then buying land in Platteville, Colorado:

After a little over ten years in Platteville, Gottlieb Sr. heard about farming opportunities in Canada so he wrote for brochures to find out more about the country. In August 1927, he boarded a train and headed for Canada to see what kind of opportunities the country held for him. The train stopped in Wheatland, and while there he decided to check with a real estate agent to see what kind of farm land surrounded Wheatland. The agent offered him a place that Gottlieb thought would suit his family very well!<sup>2</sup>

United States Department of the Interior  
National Park ServiceNational Register of Historic Places  
Continuation SheetSection number 8 Page 11

Wheatland Railroad Depot

Platte County, Wyoming

By 1915 the population was 5,277. The "Wheatland Flats" was home to a thriving community.

The April 5, 1916 edition of The Wheatland World notes the public clamor for a larger depot:

Becoming weary of waiting for the railroad company to voluntarily provide adequate and respectable accommodations for the traveling public at Wheatland, citizens have taken the matter in hand and will try to move the company to action by means of popular petition.

For a long time the people have put up with a dinky, dingy little coop that is dignified by the name of "depot," but which has long been a discredit--not to say disgrace--to both the town and the railroad. It is the shabbiest, most sorry looking building of a business or public nature in the whole town, and it is woefully lacking in ordinary conveniences either for the railroad employees or for the public. Citizens are now going to try to persuade the railroad officials to supplant this eyesore with a real depot that will be in keeping with the business of the town and will supply the traveling public with such reasonable conveniences as they are entitled to.

At the meeting of the Improvement Club, Monday evening, the depot was both cussed and discussed and a committee appointed to circulate petitions praying for relief from existing conditions and the building of an adequate station house.

The Colorado and Southern officials were moved to expand the depot, with the construction of a 24' x 40' freight room added to the south end of the existing building. From photographs it is clear that they also lowered the floor of the express room.

By August 16, 1916 the addition was nearing completion. The Wheatland World reports, under the headline "C. & S. HANDS US A LEMON IN NEW DEPOT":

The promised improvements (!) to the Colorado and Southern depot at Wheatland are nearing completion. That the remodeled structure is a disappointment to the public is stating it mildly. That it will supply needed office and storage space for the freight and express business is apparent, but so far as its furnishing adequate accommodation to the traveling public is concerned it amounts to nothing. Oh,

United States Department of the Interior  
National Park ServiceNational Register of Historic Places  
Continuation SheetSection number 8 Page 12

Wheatland Railroad Depot

Platte County, Wyoming

yes, the waiting room space has been increased slightly--a ladies' department about the size of a hall bedroom comprising this addition.

What Wheatland wants and is entitled to is a real depot with modern conveniences. The present structure has no toilet rooms of any kind, no water--in fact nothing but shelter for a few people, nothing more than would be expected in any little flag station. The numerous expressions of disgust and indignation which are heard on every side are fully justified.

Wheatland gives the railroad a lot of cash business every day in the year. It is one of the best business stations for this road in the state. Why the railroad company should disgrace the town with such a miserable excuse for a depot is inexplicable. Everybody is growling about it and they have a right to growl.

It looks as if the C. & S. officials have adopted for their motto the well known principle once enunciated by the late Commodore Vanderbilt, "The public be damned."

No additional improvements to the depot were ever made.

Unlike many western development schemes, the Wheatland Colony was a thriving success for many settlers. The soil was fertile, the water was delivered (most of the time) and the railroad took the cattle, wheat and other products to market.

The activity of the depot continued for decades. Flour and alfalfa, later corn, then sugar, were shipped to national markets. Sons were shipped to war in 1917 and 1941. First settlers, then equipment, then automobiles were delivered to the depot.

"The Wyoming Development Company, in blocking out the Wheatland system, was the first to undertake the building of a great irrigation system in Wyoming."<sup>14</sup>

The community thrived but The Wyoming Development Company lost. When the company was liquidated in 1951 the combined books showed a cumulative loss of \$1,535,880.50.<sup>15</sup>

Activity at the depot began to decline with the ending of passenger service to Wheatland in 1965. Four years later the railroad, then the Burlington Northern, moved its Station Master to a metal building a half mile north. It was easier to heat and less costly to maintain. The depot was leased for storage and quickly deteriorated.



United States Department of the Interior  
National Park ServiceNational Register of Historic Places  
Continuation SheetSection number 8 Page 13

Wheatland Railroad Depot

Platte County, Wyoming

rated.

Few commercial or public buildings remain from the earliest days of Wheatland. The Globe Hotel was torn down for a parking lot. The brick school burned. The flour mill is gone. The frame store fronts have been replaced. The depot, the two-story Carey Building and the headquarters of the Wyoming Development Company are the last prominent reminders of 1895 Wheatland.

To Wheatland and the surrounding country, the depot represents the era of settlement for "the Flats", a time of boosterism, and new beginnings for many of the area's families. For sixty years it noted the comings and goings of Wheatland and Platte County.

United States Department of the Interior  
National Park ServiceNational Register of Historic Places  
Continuation SheetSection number 8 Page 14

Wheatland Railroad Depot

Platte County, Wyoming

## Notes

1. T.H. McGee, "Early Days in the West," Annals of Wyoming 1 (April 15, 1924), p. 13.
2. Ruby Preuit, "Wheatland," Wyoming Platte County Heritage, (Marceline, Missouri, 1981), p. 31.
3. E.O. Fuller, "Cheyenne Looking North," Annals of Wyoming (1951).
4. Robert G. Athearn, Union Pacific Country, (Chicago, 1971), p. 300.
5. E.O. Fuller, "Cheyenne Looking North,".
6. W.A. Watrous, "Reminiscences of Early Days," Wheatland Times, (August 10, 1933).
7. Ruby Preuit, "Wheatland," p. 32.
8. H. M. Ferguson, "Wheatland's Past 1894-1914" MS, Typed, January 1959. Wheatland Public Library.
9. Dale Windom, "Windom, Frank & Corabelle," Wyoming Platte County Heritage, (Marceline, Missouri, 1981), p. 452.
10. Mrs. Duane Fertig, "Fertig, George & Elizabeth", Wyoming Platte County Heritage, (Marceline, Missouri, 1981), p. 181.
11. Lois Jean Artery, "Woolsey, Charles Vincent," Wyoming Platte County Heritage, (Marceline, Missouri, 1981), p. 453.
12. Oscar F. Throckmorton, "Throckmorton, Oscar & Cleta," Wyoming Platte County Heritage, (Marceline, Missouri, 1981), p. 416.
13. The Family of Gottlieb Geringer, "Geringer, Gottlieb Family," Wyoming Platte County Heritage, (Marceline, MO, 1981), p. 194.
14. F. T. Carnes, Jr. "The Wyoming Development Company", MS, Typed, Master's Thesis, University of Colorado History Department, 1953, p. 91.
15. F. T. Carnes, Jr. "The Wyoming Development Company", p. 105.

United States Department of the Interior  
National Park ServiceNational Register of Historic Places  
Continuation SheetSection number 8 Page 15

Wheatland Railroad Depot

Platte County, Wyoming

## Major Bibliographical References

Athearn, Robert G. Union Pacific Country. Chicago: Rand McNally, 1971.

Bartlett. History of Wyoming. S.J. Clare Publishing Co.

Carnes, Jr., Frederick Thomas. "The Wheatland Development Company." MS, Typed, Master's Thesis, University of Colorado Department of History, 1953.

Fuller, E. D. "Cheyenne Looking North" Annals of Wyoming. Wyoming State Historical Department, 1951.

Gould, Lewis L. Wyoming: A Political History 1868-1896. New Haven & London: Yale University Press, 1968.

Larson, T. A. History of Wyoming. Lincoln & London: University of Nebraska Press, 1978.

Platte County Extension Homemakers Council, Wyoming Platte County Heritage. Marceline, MO: Walsworth Publishing, 1981.

The Platte County Record Times. Centennial Edition, July 15, 1987.

Trenholm, Virginia Cole. Footprints on the Frontier. Douglas, WY: Douglas Enterprise Co, 1945.

Wheatland Development Company. "Improved Farms on Easy Terms: The Wheatland Colony", 1914. Platte County Library.

The Wheatland World. October 19, 1894 - January 25, 1894. Originals in the Platte County Library.

"Wyoming Centennial: 1890-1990 Wheatland Chronicle." Wyoming Centennial Committee for Wheatland, November 1989.

Wyoming Projects Administration, Inventory of the County Archives of Wyoming, No. 16, Platte County, Wheatland. The Wyoming Historical Records Survey Program, December, 1939.

Wheatland Railroad Depot  
Name of Property

Platte County, Wyoming  
County and State

10. Geographical Data

Acreeage of Property .22 acres (9,592 square feet)

UTM References

(Place additional UTM references on a continuation sheet.)

1 

1	3	5	0	4	0	8	0	4	6	5	5	7	0
Zone		Easting						Northing					

3 

Zone		Easting						Northing					

4 

Zone		Easting						Northing					

See continuation sheet

Verbal Boundary Description

(Describe the boundaries of the property on a continuation sheet.)

Boundary Justification

(Explain why the boundaries were selected on a continuation sheet.)

11. Form Prepared By

name/title Roger Ludwig, volunteer

organization Wheatland Depot Agents

date 1-16-95

street & number 74 13th Street

telephone (307) 322-2710

city or town Wheatland

state WY zip code 82201

Additional Documentation

Submit the following items with the completed form:

Continuation Sheets

Maps

A USGS map (7.5 or 15 minute series) indicating the property's location.

A Sketch map for historic districts and properties having large acreage or numerous resources.

Photographs

Representative black and white photographs of the property.

Additional items

(Check with the SHPO or FPO for any additional items)

Property Owner

(Complete this item at the request of SHPO or FPO.)

name C.H. Brown, III.

street & number P.O. Box 789

telephone (307) 322-2525

city or town Wheatland

state WY zip code 82201

**Paperwork Reduction Act Statement:** This information is being collected for applications to the National Register of Historic Places to nominate properties for listing or determine eligibility for listing, to list properties, and to amend existing listings. Response to this request is required to obtain a benefit in accordance with the National Historic Preservation Act, as amended (16 U.S.C. 470 et seq.).

**Estimated Burden Statement:** Public reporting burden for this form is estimated to average 18.1 hours per response including time for reviewing instructions, gathering and maintaining data, and completing and reviewing the form. Direct comments regarding this burden estimate or any aspect of this form to the Chief, Administrative Services Division, National Park Service, P.O. Box 37127, Washington, DC 20013-7127; and the Office of Management and Budget, Paperwork Reductions Projects (1024-0018), Washington, DC 20503.



United States Department of the Interior  
National Park Service

## National Register of Historic Places Continuation Sheet

Section number 10 Page 16

---

Wheatland Railroad Depot

Platte County, Wyoming

### Geographical Data

#### Verbal Boundary Description

The National Register boundaries are 44 feet by 218 feet, the on-ground dimensions of the structure plus a ten foot area surrounding the building on the north, east and west sides, and a 110 foot extension on the south covering the area of the loading dock. The building is located on an unplatted area directly east of Block 61, Town of Wheatland, Township 24 Range 68 Section 13.

#### Boundary Justification

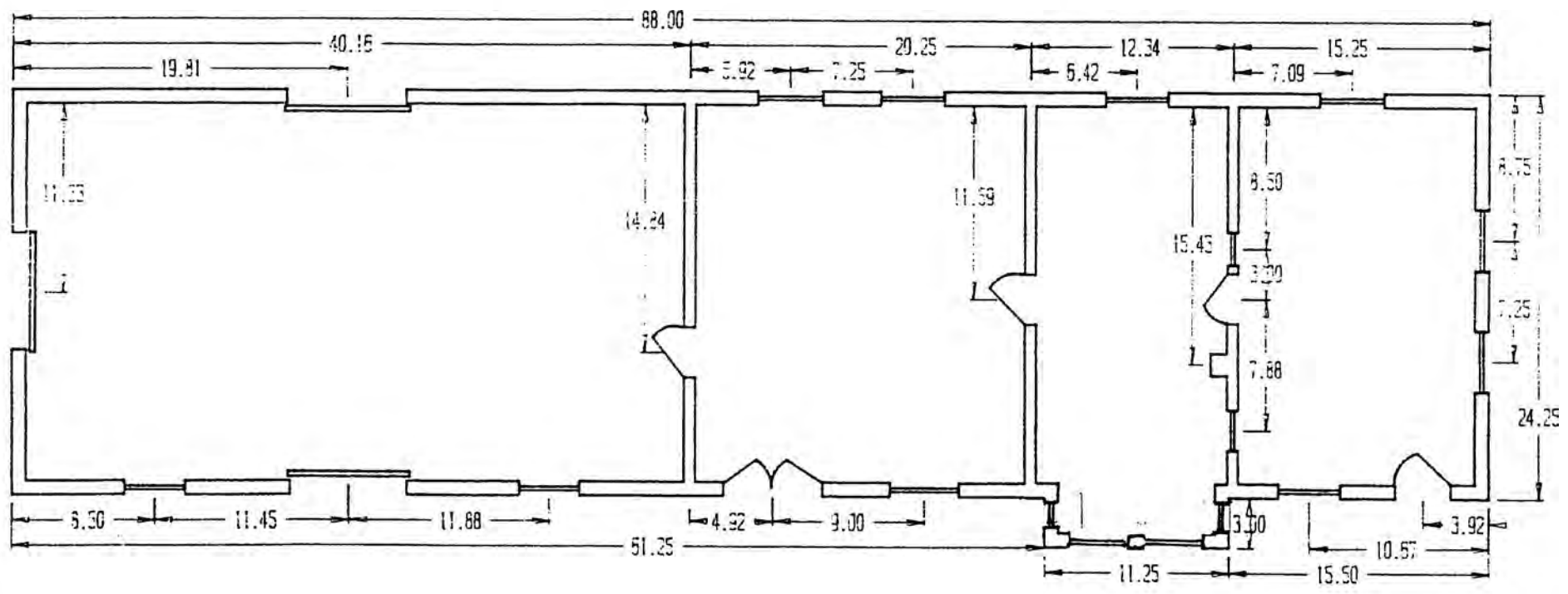
The boundaries contain the area of the depot, the current loading dock and the location of the original loading docks and wooden walkways, an unplatted area.

Platte County, Wyoming

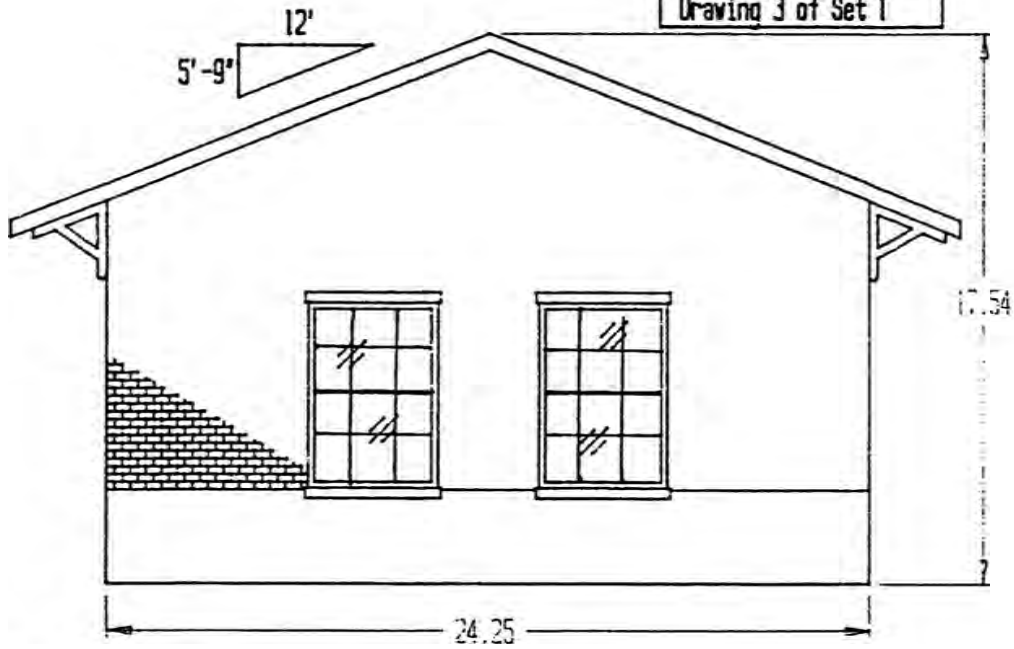
Wheatland Railroad Depot

Scott Obertal
Depot Floorplan
Date: 12-2-94
Drawing 1 of Set 1

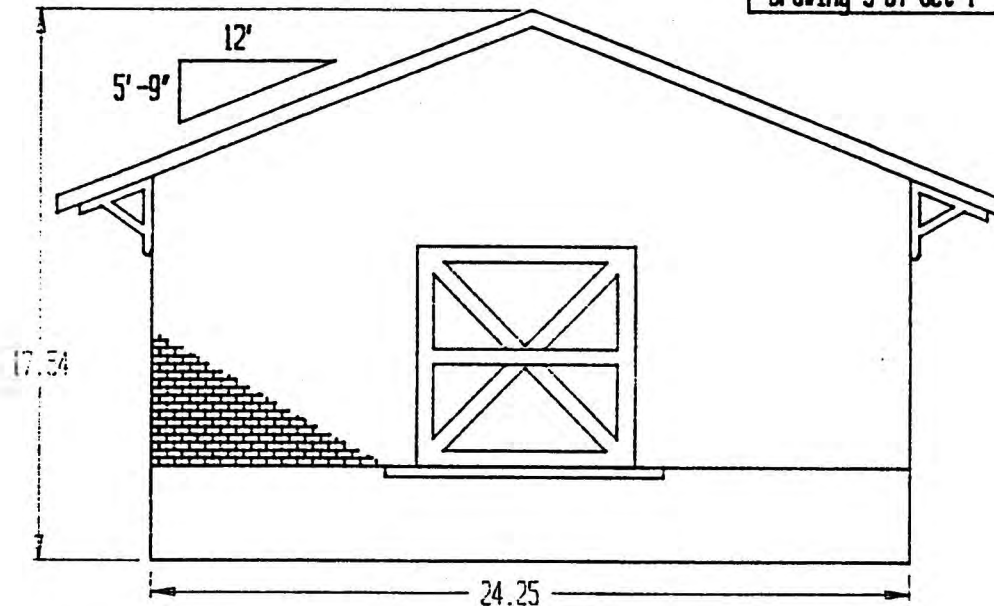
North →



Scott Obertal
North Elevation
Date: 12-2-94
Drawing 3 of Set 1



Scott Obertal
South Elevation
Date: 12-2-94
Drawing 5 of Set 1

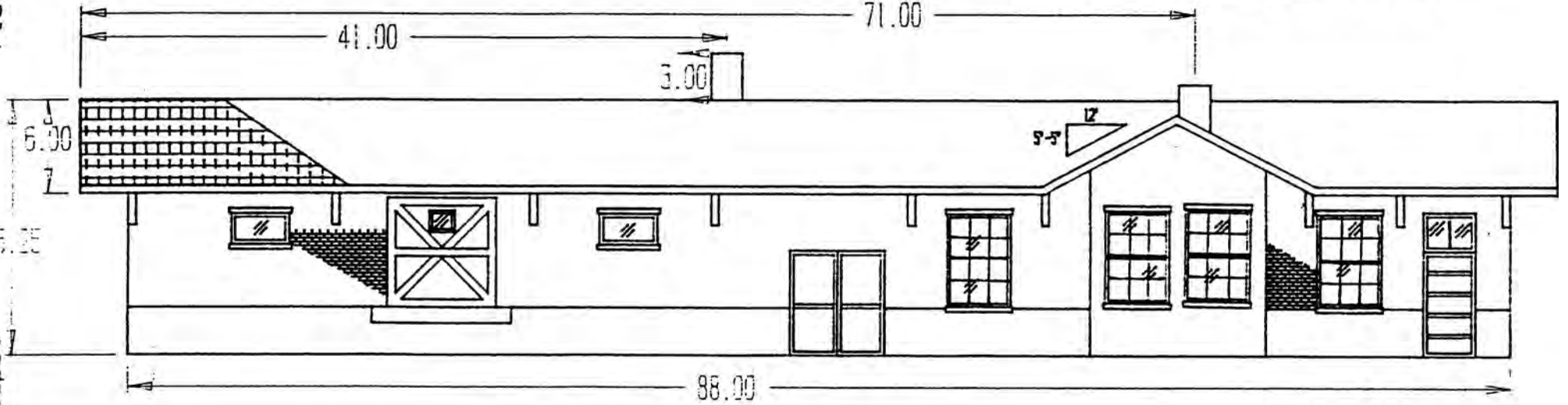




Platte County, Wyoming

Wheatland Railroad Depot

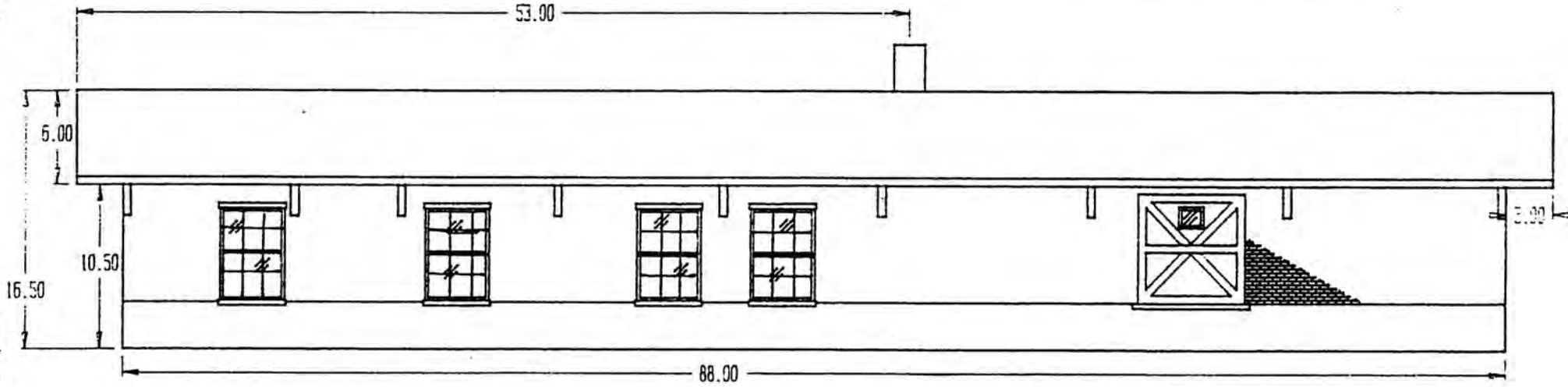
Scott Obertal
East Elevation
Date: 12-2-94
Drawing 4 of Set 1



Platte County, Wyoming

Wheatland Railroad Depot

Scott Obertal
West Elevation
Date: 12-2-94
Drawing 2 of Set 1





5-27-95

Wheatland Depot, Side

located at 701 Gilchrist Av. in Wheatland, Wyo

Platte County

View is west looking at (east) side of the bldg

Photographer: Richard Collier





4-27-95

Wheatland Depot

Located at 701 Gilchrist Av. in Wheatland, Wyo.

Platte Count.

View is North looking at the (south) end +  
(east) rear of the bldg.

Photographer: Richard Collier





4-27-95

Wheatland Depot, rear + side

Located at 701 Gilchrist Av. in Wheatland, Wyo.

Platte County

View is SW looking at the (East) rear  
(North) side of the Bldg.

Photographer: Richard Collier





4-27-95

Wheatland Depot, front + side

Located at 701 Gilchrist Av. in Wheatland, Wyo.

Platte County

View is NE looking at the (west) front + (south) side  
of the Bldg.

Photographer: Richard Collier





4-27-95

Wheatland Depot, front & side

Located at 701 Gilchrist Av. in Wheatland, Wyo

Platte County

View is SE looking at (west) front &  
(North) side of Bldg.

Photographer: Richard Collier





4-27-95

Wheatland Depot

Located at 701 Gilchrist Av. in Wheatland, Wyo

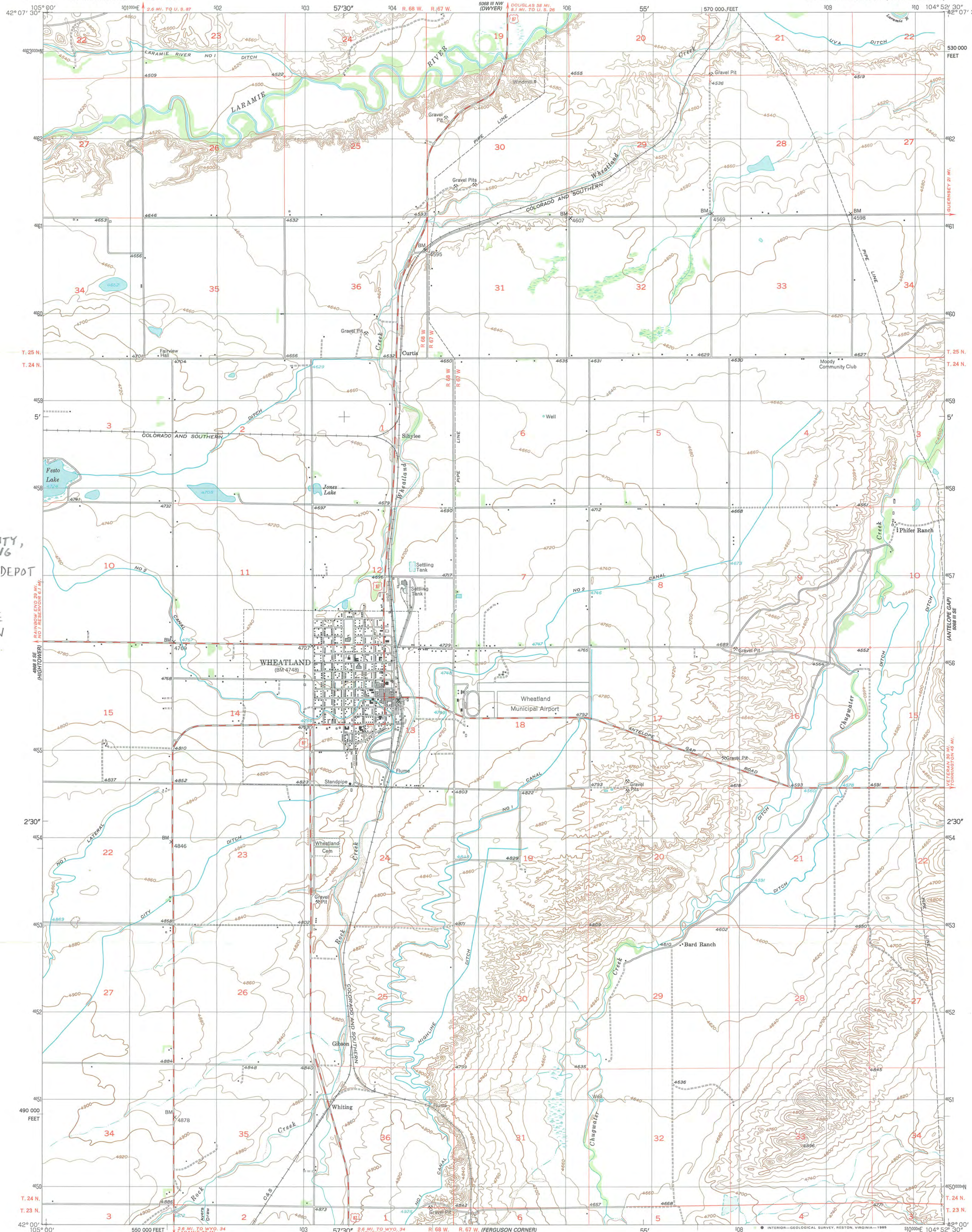
Platte County

View is NNW looking at the (south) end +  
(East) side of the bldg.

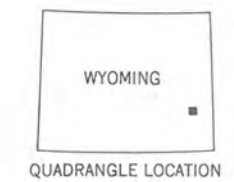
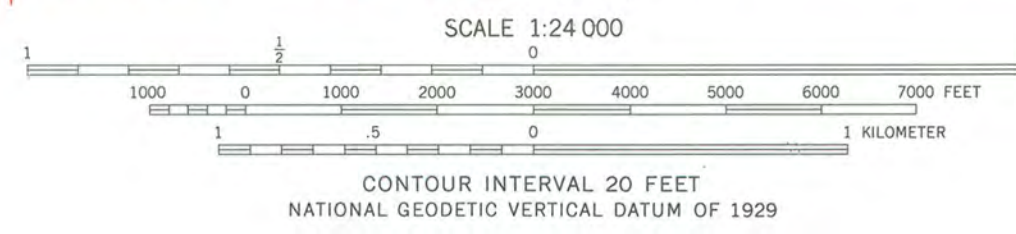
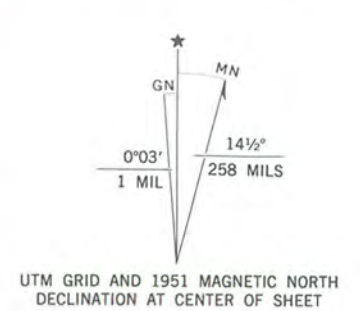
Photographer: Richard Collier



PLATTE COUNTY,  
WYOMING  
WHEATLAND DEPOT  
ZONE 13  
504080 E  
465570 N



Mapped, edited, and published by the Geological Survey as part of the Department of the Interior program for the development of the Missouri River Basin Control by USGS and USC&GS  
Topography from aerial photographs by multiplex methods and plane-table surveys 1951. Aerial photographs taken 1949  
Polyconic projection. 1927 North American Datum 10,000-foot grid based on Wyoming coordinate system, east zone  
1000-meter Universal Transverse Mercator grid, zone 13, shown in black  
To place on the predicted North American Datum 1983 move the projection lines 7 meters north and 47 meters east as shown by dashed corner ticks



ROAD CLASSIFICATION

Heavy-duty	Light-duty
Medium-duty	Unimproved dirt
U.S. Route	State Route

THIS MAP COMPLIES WITH NATIONAL MAP ACCURACY STANDARDS  
FOR SALE BY U. S. GEOLOGICAL SURVEY, DENVER, COLORADO 80225, OR RESTON, VIRGINIA 22092  
A FOLDER DESCRIBING TOPOGRAPHIC MAPS AND SYMBOLS IS AVAILABLE ON REQUEST

WHEATLAND, WYO.  
42104-AB-TF-024  
1951  
DMA 5068 III SW-SERIES V874



UNITED STATES DEPARTMENT OF THE INTERIOR  
NATIONAL PARK SERVICE

NATIONAL REGISTER OF HISTORIC PLACES  
EVALUATION/RETURN SHEET

REQUESTED ACTION: NOMINATION

PROPERTY NAME: Wheatland Railroad Depot

MULTIPLE NAME:

STATE & COUNTY: WYOMING, Platte

DATE RECEIVED: 1/16/96      DATE OF PENDING LIST: 1/31/96  
DATE OF 16TH DAY: 2/16/96      DATE OF 45TH DAY: 3/01/96  
DATE OF WEEKLY LIST:

REFERENCE NUMBER: 96000077

NOMINATOR: STATE

REASONS FOR REVIEW:

APPEAL: N    DATA PROBLEM: N    LANDSCAPE: N    LESS THAN 50 YEARS: N  
OTHER: N    PDIL: N    PERIOD: N    PROGRAM UNAPPROVED: N  
REQUEST: N    SAMPLE: N    SLR DRAFT: Y    NATIONAL: N

COMMENT WAIVER: N

ACCEPT     RETURN     REJECT    \_\_\_\_\_ DATE

ABSTRACT/SUMMARY COMMENTS:

*See slr*

RECOM./CRITERIA *Accept A.*

REVIEWER *L.M. Clelland*      DISCIPLINE *History*

TELEPHONE \_\_\_\_\_      DATE \_\_\_\_\_

DOCUMENTATION see attached comments Y/N see attached SLR *Y*/N





THE STATE OF WYOMING  
Jim Geringer, Governor

Department of Commerce  
Celeste Colgan, Director

Division of Cultural Resources

December 12, 1995

Ms. Carol Schull  
Keeper of the National Register  
National Park Service  
U.S. Department of the Interior  
800 N. Capitol NW  
Washington, D.C. 20421

RE: Wheatland Railroad Depot

Dear Ms. Schull:

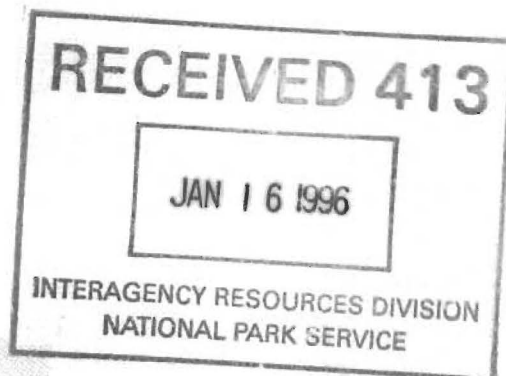
Enclosed is the nomination for the **Wheatland Railroad Depot** in **Platte County, Wyoming**. The Nomination drawings and photos have been printed on archivally stable paper and all technical requirements have been met.

This nomination was prepared by a local volunteer as a result of efforts to save the structure by local citizens. We look forward to receiving word of the listing of this important resource. If you or your staff have any questions, please contact Sheila Bricher-Wade at 307-777-6179.

Sincerely,

John T. Keck  
State Historic Preservation Officer

JTK:SBW:jh  
Enclosures



PROPERTY NAME: Wheatland Railroad Depot

OTHER NAME/ 48PL995  
SITE No. :

MULTIPLE NAME: NOT APPLICABLE

ADDRESS/ 701 Gilchrist Ave.  
BOUNDARY :

CITY: Wheatland

COUNTY: Platte

STATE: WYOMING

Restricted Location Information: Owner: PRIVATE Resource Type: BUILDING

Contributing Noncontributing

Buildings	1	0
Sites	0	0
Structures	0	0
Objects	0	0

Nomination/Determination Type: SINGLE RESOURCE

Nominator: STATE GOVERNMENT

Nominator Name:  
NOT APPLICABLE

Federal Agency: NOT APPLICABLE

NPS Park Name: NOT APPLICABLE

Certification: DATE RECEIVED/PENDING NOMINATION

Date: 01/16/96

Other Certification: NOT APPLICABLE

Historic Functions: TRANSPORTATION

Historic Subfunctions: RAIL-RELATED

Current Functions: VACANT/NOT IN USE

Current Subfunctions: NOT APPLICABLE

Level of Significance: LOCAL Applicable Criteria: EVENT

Significant Person's Name: NOT APPLICABLE

Criteria Considerations: NOT APPLICABLE

Area of Significance: TRANSPORTATION

Periods of Significance: 1875-1899 1900-1924 Circa: Specific Sig. Years:  
1925-1949 1895

Architect/Builder/Engineer/  
Designer:

Denver & Gulf Railroad  
Goodrich, Charlie

Other Documentation:

NOT APPLICABLE

HABS No. N/A

Architectural Styles: NOT APPLICABLE

Describe Other Style: NOT APPLICABLE

Foundation Materials: STONE  
Wall Materials: BRICK  
Roof Materials: ASPHALT  
Other Materials: NONE LISTED

Acreage: 0.2

UTM	Zone	Easting	Northing	Zone	Easting	Northing
Coordinates:	13/	/5 04 080/	/46 55 570	/ /		/ /

Cultural Affiliation:

NOT APPLICABLE

HAER No. N/A