

SUPERINTENDENT'S MONTHLY REPORT

SEPTEMBER
1931

YOSEMITE NATIONAL PARK

CALIFORNIA

UNITED STATES
DEPARTMENT OF THE INTERIOR
NATIONAL PARK SERVICE
YOSEMITE NATIONAL PARK

OFFICE OF THE SUPERINTENDENT

CALIFORNIA

October 3, 1931

The Director
National Park Service
Washington, D. C.

Dear Mr. Director:

I am submitting herewith report of activities in Yosemite National Park for the month of September 1931:

000 - General

Visitors to Yosemite enjoyed perfect fall weather throughout September. There were no serious fires or accidents. Travel held up very well during the month showing a gain of approximately eight per cent., due to the perfect weather. For the first time in many months, a great deal of difficulty was experienced with liquor violators in the Park. There were ten court cases during September, all for liquor law violations.

020 - General Weather Conditions

September was clear and mild with only .49 inches of rain as compared with 1.5 inches during the same period a year ago.

Maximum temperature for the month91 deg. on the 3rd
Minimum " " " " 33 deg. on the 9th.
Maximum average 80.7 deg.; Minimum average 42.6 deg.

Yosemite Falls was dry all month and water is very low in the Merced and Tuolumne Rivers; in fact 1931 has been one of the driest years in park records.

100 - Administrative

110 - Status of Work

All office work is current.

120 - Park Inspections by

121 - Superintendent

The Superintendent made a trip to southern Oregon during the month, visiting Crater Lake and Lassen Volcanic National Parks. While on this trip he was also fortunate enough to be able to attend the dedicatory services of the Bull-Creek-Dyerville Grove of Redwoods. Regular inspection trips of all going Park projects were made, as well as trips to San Francisco for conferences with the Chief Engineer, the Landscape Division and Bureau of Public Road officials.

124 - Interior Department Officers

Honorable Joseph Dixon, Assistant Secretary, arrived in the Park on September 5 and made inspection trips to the Tuolumne Grove (timber purchase) Glacier Point and the Mariposa Grove.

125 - Other Governmental Officers

Mr. H. B. Hommon of the U. S. Public Health Service came into the Park on the 2nd in connection with the new sewage disposal plant operations.

Mr. H. M. Wheeler, Chief Lecturer for the U. S. Forest Service came into the Park on September 4th and gave two special lectures on forest protection at Camp Curry and at the Rangers' Club. He was accompanied by Mr. Connor, a former National Park Service employee.

127 - Other Agencies

Mr. H. M. Stafford, State Engineer in charge of snow survey work visited the Park twice during September in connection with snow survey activities for the Park, the erection of snow survey cabins, etc.

130 - Finance and Accounts

The following is a statement of the status of the various appropriations handled by the Park:

		Appropriated	Expended & Obligated	Balance
41/2434	Yos. Nat'l Park 1931-32	\$530,739.00	\$393,833.19*	\$136,905.81 *
41/2406	For. Prot. & Fire Prevention	24,575.00	16,087.17*	8,487.83 *
4X436	Rds. & Trails Nat'l Park Serv.	2,070,347.13 1,462,350.	1,462,350.16*	607,996.97*

* Estimated figures

150 - Equipment and Supplies

The following equipment and supplies have been received during September:

- 6 - carpenters' hammers
- 24 - heating stoves
- 2 - magazine slides for Graflex
- 2 - steel filing cabinets
- 1 - revolving arm chair

170 - Plans, Maps, and Surveys

The recent allotment for unemployment relief in roads and trails construction has delayed the collection of information for estimates and maps as requested in Washington Order #228.

Included in the new construction, surveys and information have been gathered on the Grizzly Giant road change and development of Happy Isles picnic grounds.

The drafting office has been engaged in revision of 200-foot Valley maps to include bridle paths; other work consisted of revision of the Park Guide Map and a number of miscellaneous jobs in connection with construction.

Field survey work embraced: Completion of McGilvray patented land map; partial study of Tuolumne Meadows mosquito drainage; Mariposa Grove comfort station service lines; partial map of Sunset Point area; bridle path survey mentioned above; Yosemite Creek topographic survey; topographic map of proposed area for Yosemite Lodge parking, and many construction items.

Associate Engineer Burr, of the San Francisco office, completed a very difficult survey of energy losses in the power distribution system. Calculations were checked by rate experts of the San Joaquin Light and Power Corporation. Results indicated a loss of 20% from the lines to the consumers' meters and rates charged were raised accordingly, which will result in a substantial and fair increase in Government revenue.

200 - Maintenance, Improvements and New Construction

210 - Maintenance

Water System - Cooler weather has alleviated the water shortage situation, although still at Aspen Valley, Arch Rock and the Mariposa Grove checking station there are insufficient supplies. Repairs were made at Union Point for the Glacier Point supply and steps have been taken to install an auxiliary pumping unit.

Sewer System - On September 15 the new sewage plant was treating the entire amount of Valley sewage. The effluent has been so greatly improved that it is now hard to differentiate between a sample of the sewage effluent and a glass of tap water.

Buildings - The placing of a reinforced concrete ceiling in the jail and new gables has finally been completed. There have been the usual maintenance items. Windows will be placed in several back porches before winter sets in.

Trails - Replacement of the central Happy Isles bridge is completed except for a small amount of rubble masonry to be placed under stringers. Practically no other trail maintenance work required this month.

Roads - Premixed oil shoulder treatment on the Valley floor roads has continued throughout the month. Very little maintenance work has been done on outlying roads.

The Mariposa Grove roads were regraded and recoiled and are in excellent shape for the winter.

Electric System - Regular maintenance items have been taken care of by electrical department.

220 - Improvements

Buildings - Roofs on six Lost Arrow residences and the mess hall were stained; and some interior painting was done on two residences.

Roads - A new service road was constructed to the Mariposa Grove employees' camp, approximately one-third of a mile in length, which is a decided improvement in grade and alignment over the old road which has been obliterated.

Trails - A new counting device has been installed by the electric department near the foot of the Vernal-Nevada Falls Trail which contains a photo electric cell that as soon as the ray is broken by an object passing, operates a relay which in turn automatically causes the counter to register. However, before this device is successful it will be necessary to make some adjustments as it is conspicuous and causes so much curiosity that people are counted twice upon their return to investigate the apparatus.

Signs - The new sign program for the Valley bridle paths was completed with the installation of standard enamel signs. Signs which were ordered for the Big Oak Flat and Tioga Roads have not yet arrived.

Electric System - Every effort has been made to cut down on power purchased this year, and in this connection the comfort stations in camps 7, 15, and 14 have been rewired to a multiple lighting system with a separate switch in each station. These stations were formerly lighted by the series street lighting system, consuming electric energy much of the time when it was not necessary. All electric air heaters have been removed from Government shops and laborer quarters, wood stoves being installed in their stead.

The installation of an oil heating system in the Administration Building will also aid materially in reducing electric current used. Between \$200 and \$300 per month was expended for electric energy in heating this large building. A similar installation is contemplated for the museum.

230 - New Construction

Buildings

Doctor's, Dentist's and Employee's Residences: During the month sites for each residence were graded and foundations constructed; the first story of the employee's residence is now framed.

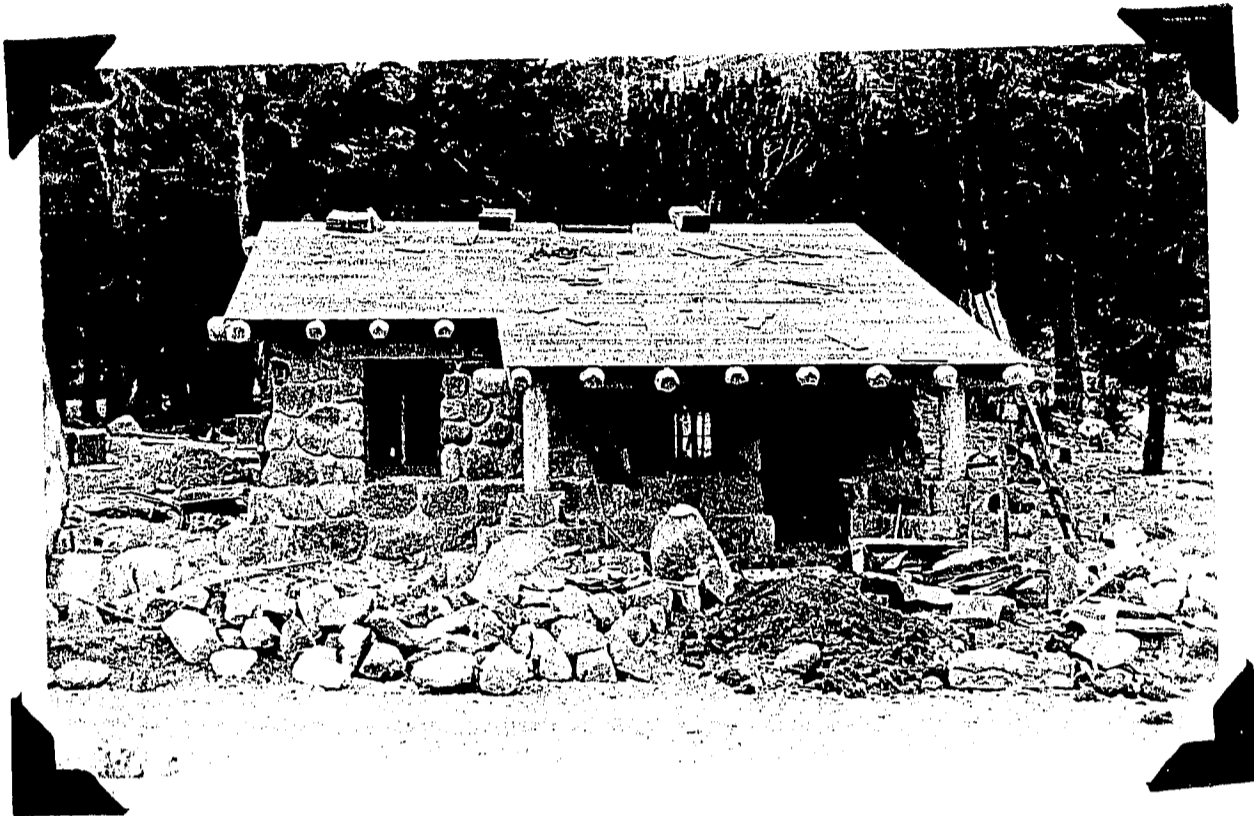
Tioga Pass Ranger Station: The month's work included: Completion of rubble masonry; installation of windows; building of fireplace and chimney; completion of roof; framing and shingling, with commencement of interior work and setting of fixtures. A 4" sewer line 160 feet long was installed across the highway to a cesspool.

Tuolumne Meadows Comfort Station: Completed except for some finish painting.

Indian Quarters and Garage: The cabins and garage are now completed and ready for occupancy, as soon as comfort station is completed. The concrete floor has been placed in the comfort station, interior partitions have been installed and most of the painting completed. There remains the setting of fixtures.

Mariposa Grove Comfort Station: Log work is completed; interior partitions are placed and fixtures installed, including a gas heating and illumination system. There remain four attic windows and screens to be placed and all staining and painting.

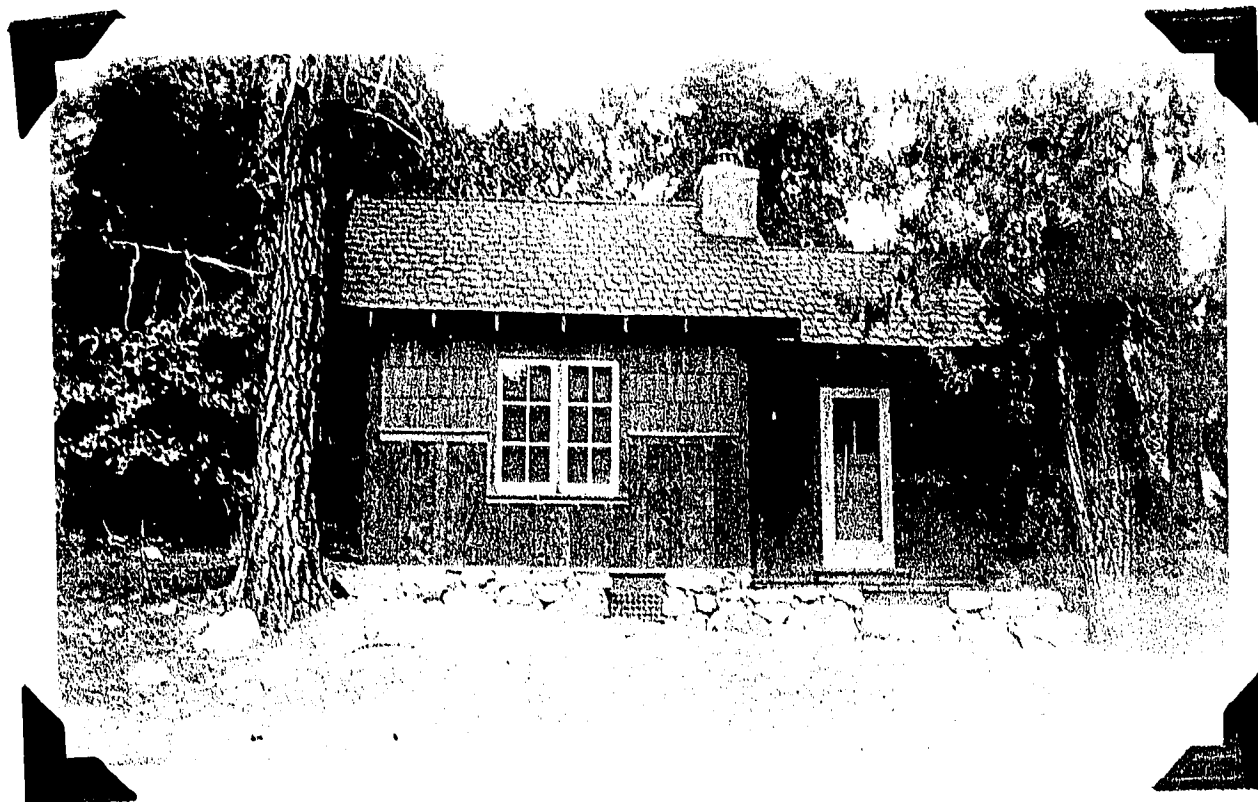
Telephone and Electric System - A new 11-mile metallic telephone line was constructed from Pate Valley to Benson Lake. On this line the men have done an excellent job, averaging one-half mile of line per day. The telephone cable between Camp Curry and Camp 6 is completed except for removing old overhead lines



NEW TIOGA PASS RANGER CABIN



FIREPLACE IN TIOGA RANGER CABIN



NEW CABIN AT INDIAN VILLAGE



GARAGE INDIAN VILLAGE

Substation #1 is now 65% complete; substation #2 is 50% complete. Work will soon be commenced on the power line from The Ahwahnee to Camp Curry.

Water and Sewer Systems: Sewer system extensions to the three new residences now under construction have been made, also water extensions.

This year's construction at Tuolumne Meadows was terminated during the early part of the month. The entire line has been backfilled and landscaped. Funds were not sufficient to install the campground lines, complete the drain or the backfill about the settling tank. The Tioga Pass water line was finished with the installation of a 4,000 gallon tank salvaged from Middle Fork on the Tuolumne River, the construction of a small intake and backfill of a 1" line.

The Mariposa Grove water system has been completed. The principal work for the month consisted of installation of a 4" line below the settling tank; a 2" line to the comfort station; the building of pressure relief tank; the completion of intake catchment basins; and the building of deadmen on the main line. Landscaping operations around the two intakes include a sprinkling system.

The Mariposa Grove sewer system has been completed except for a connection with the comfort station and some backfilling about the septic tank. 2,000 feet of drain tile were installed along with a sludge line from the septic tank.

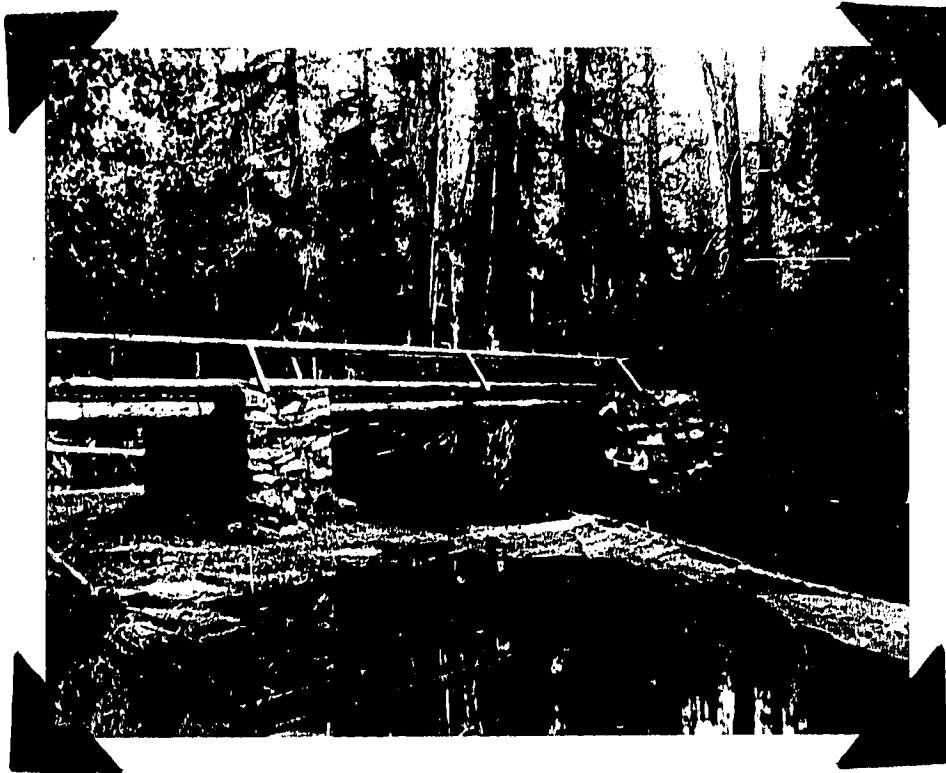
Campground Development: All new log rails in Camp 11 have been treated with creosote. A crew of eight men was occupied for two weeks in removing dangerous limbs and trees and also in clearing out the underbrush in Camp 11.

Merced River Revetment: An average of four men have been riprapping the bank of Yosemite Creek near the junction of the Merced River since September 12. To date they have accomplished most of the excavation and have placed 10% of the 150 cubic yards of stone bank protection.

Trail Construction: On the May Lake to Ten Lakes Trail the crew has reached the pass on the northeast slope of Tuolumne Peak and is now working towards the south fork of Cathedral Creek.

On the Isberg Pass Trail 4,000 feet were finished during the month, extending from Lyell Fork junction to about one-fourth mile up the granite slopes towards Lyell Fork Falls. Two excellent bridges were constructed, one across the Merced River below Lyell Fork, having an overall length of 67 feet; the other, one mile above and across the Merced Fork, having a 28-foot overall length. It is hoped the trail can be extended above the falls before winter conditions suspend operations.

On the Nevada Falls-Glacier Point Trail the crew commenced operation about the middle of the month. The trail has been relocated for one mile extending just below Glacier Point Campground over Old Maid Point towards Illilouette Creek.



Portion of newly constructed Isberg Pass Trail (lower photograph)
Newly constructed bridge across Lyell Fork of Merced River on this trail (upper photo)

Happy Isles Development: Logs were cut and hauled for the east and west foot bridges; the west foot bridge has been framed and is ready for moving to the site. Work has just been commenced on rubble masonry abutments.

Wawona Point Development: Three men were moved to the Mariposa Grove on the 30th and are engaged in cutting down marked trees about the point, thus clearing the view at this summit. This fall's operations will consist only of clearing snags and marked trees.

Crane Flat Fire Lookout: Work was commenced during the first week in September. The site was cleared, foundation installed, rubble masonry walls constructed and the first story completely framed and braced and the second story framed. Building is expected to be finished at the end of October.

240 - Improvement of approaches to park

The State is at present working on the All-Year Highway out of Merced removing some dangerous curves and constructing a new elevated bridge over a railroad crossing just this side of Merced which has been the scene of some bad accidents in the past.

260 - Landscape Work

The old sewer farm housing has been torn down and the lumber piled for use on other construction work.

Lawns about Government buildings have been cut and trimmed several times during the month, and a special top dressing has been placed on those needing it most.

Considerable landscaping is being done in connection with road shoulder work. Fines are placed on the gravel shoulders, trees are removed from ditches and selective clearing is being accomplished to better vision at curves and to open up vistas; unsightly rock is being removed and used in widening fills, etc.

On the Big Oak Flat Road a great deal of cleanup work is being accomplished. Unsightly logs, rocks, stumps, etc. have been removed from Gentry Station to a point a little beyond Tamarack Flat.

300 - Activities of other agencies in the Park

310 - Public Service Contractors

The Best, Boysen and Foley studios were open daily throughout the month.

The Yosemite Park and Curry Company closed Camp Curry on the morning of September 10. The Lodge is now serving tourists on a winter basis and The Ahwahnee is, of course, open and doing a fair



NEW FOOT BRIDGE -- HAPPY ISLES

business considering the dull season. The housecount at The Ahwahnee this year was only 912 as compared with 1,489 last year. The total housecount at all units of the Company was 9,950 during September 1931 as compared with 11,242 last September (1930). Glacier Point Mountain House is open and taking care of all tourists who wish to visit Glacier Point. The Company has a total of 252 employees this year as compared with 272 last year. 249 visitors took advantage of their horseback trips as compared with 313 last year.

320 - Cooperating Governmental agencies

The status of the new construction work on the Wawona Road being done under supervision of the Bureau of Public Roads is as follows:

Cleanup work being done by day labor is complete except for a few large piles of debris which will be burned after fall rains. Oiling is complete with the exception of about a quarter mile at the South Fork Bridge which will be done after bridge is completed.

Maintenance crews have shaped up shoulders and cleaned out ditches between Grouse Creek and Camp Hoyle.

Status of Day Labor Cleanup and Oiling is as follows:

<u>Percent last month</u>	<u>Percent this month</u>	<u>Percent to date</u>
68	18	86

George Pollock, Contractor on the South Fork Bridge, has completed the bridge to the deck and hand rail. Work still to be done is the asphalt wearing surface and shaping up of the road on either side. This bridge is now 93 per cent. complete, 50% of the work having been done during the month.

George Pollock, also contractor on the Mariposa Grove-Hoyle Camp section (grading) has completed this section and it has been accepted.

A. C. Goerig, contractor on the Turtleback Dome-Valley Floor section of this road has accomplished the following work: He has one shovel and four trucks now working in the cut at the west portal of the tunnel. All of the rest of the 3.9 miles of grading is complete. The tunnel has been driven 3,000 feet, full size. Excellent progress is being made by this contractor who has the project 61% complete while only 46% of the time has elapsed. 51% was completed on the 1st of last month, 61% on the first of this month, 10% being done during the month of September.

350 - Donations and Accessions of all Kinds

None received

400 - Flora, fauna, and natural phenomena

410 - Ranger, naturalist and guide service

Ranger Service: The ranger force consisted of 16 permanent men; the temporary force was reduced from 33 on September 1 to 13 on September 30 - practically the same status as last year. The deer season opened September 16 and all available rangers were concentrated on a patrol of the western and southern boundaries with an especially vigilant patrol maintained along the Wawona Road boundary. Very few deer were taken out of this section near the park. In fact due to the fine weather, hunters have been having rather poor luck as a great number of the deer stay at the higher elevations.

Fenced pastures were placed by rangers at Virginia Canyon, Matterhorn Canyon, Tiltill Valley, Tuolumne Meadows and Camp 11 Annex for use of the rangers on patrol trips and tourists with pack outfits traveling through the mountains.

Naturalist Service: Until September 10 the summer program of daily trips and lectures was maintained by the Naturalist Staff, in order to take care of large numbers of visitors in over Labor Day period. On September 10 the winter schedule was put into effect. A total of twenty field trips were made during the month with an attendance of 246; there were a total of 8 auto caravans with 53 cars and 189 visitors; 94 lectures were given with a total attendance of 6,835 people. The attached statistical sheet gives a very clear picture of activities of the Naturalist Division. All outpost naturalist activities have been discontinued for the winter.

420 - Museum Service

The Museum and reading room has been kept open daily from 8 a.m. until 5 p.m.

440 - Insect Control

Mosquito oil for next season's operations has been hauled to Tuolumne Meadows and Tenaya Lake. One man was employed for two weeks in September digging drains from mosquito holes at Tuolumne Meadows.

The officers and rangers' clubhouse Clubhouse and the laborers' quarters were thoroughly fumigated by the Leinen Sanitation Company on September 22 and 23.

460 - Birds

Our summer visitors have practically all left the Valley. However the large crop of acorns has attracted great numbers of Band-tailed Pigeons and California Woodpeckers. Clark Nutcracker Crows, perhaps because of the very dry season, have been observed at low altitudes this fall.

Yosemite National Park, Calif

Station or Park

Place	Field Trips		Auto Caravans		Lectures		Museum	Publications	Total	Park		
	No.	Attendance	No.	Cars	Attendance	No.	Attendance	Distributed	Contact Made	Visitors During Period		
Museum			8	53	189	37	3,653	18,800	412	111.75	20,042	51,421
Camp Curry	9	109				2	900				1,009	
Akwahnee						9	200				200	
Rim Trips	2	25									25	
Special	1	12									13	
Bear Platform						30	3,262				5,262	
Lodge						8	710				710	
Mariposa Grove	8	100				8	110				210	
Totals:												
	20	246	8	53	189	94	6,835	19,800	412	111.75	26,070	51,421
August, 1930:	3	10	23	171	562	107	9,396	14,000	1,374	375.90	24,487	28,965

470 - Animals

Bears seem to be the chief source of attraction in Yosemite at the present time. Nearly any time during the day tourists who wish to see them may drive down near the feeding platforms and encounter from fifteen to twenty of these animals. They are causing a little trouble in the Winter Camp ground, but are being trapped as fast as possible and moved to the bear pits where they are fed twice a day; this double feeding helps a great deal in combating the bear nuisance, especially bad in the fall of the year just before hibernation.

Deer are in excellent condition and are staying in the higher elevations due to the warm weather. Very few have been killed along the boundaries outside the park this fall.

Fishing is still very good at Tuolumne Meadows and Merced Lake, although small streams in all sections of the park are entirely dry.

On account of shortage of green feed in the elk corral it has been necessary to feed these animals alfalfa every other day, fifteen tons of alfalfa hay being ordered this month to take care of the elk during the winter months.

490 - Miscellaneous

A number of park visitors coming into the park during the month have expressed surprise at the fine condition of meadows and general appearances of the flora of the Valley. Dogwood, Aspen, Manzanita and many other trees and shrubs are marvelously beautiful at the present time since the fall frosts have turned their leaves to brilliant hues of autumn. The predominant flora note on the floor of the Valley is the continual drop, drop, dropping of acorns - surely a fall note. The Indian population, especially the older women, are out with buckets and bags harvesting the crop of acorns.

500 - Use of Park Facilities by the Public

Camp Curry closed on September 10 and the Yosemite Lodge opened for the winter season on that date. Tuolumne Meadows Lodge and the Big Trees Lodge closed on September 10 for the season; the Glacier Point Mountain House opened for the winter season on September 20.

510 - Increase or decrease in travel

A total of 31,421 visitors entered Yosemite Park this month as compared with 28,965 last year - an increase of 8.4%. Final travel figures for the 1931 travel year, ending on the night of September 30, show that the 1931 year was the largest in park records in respect to private cars entering the park. There were a total of

151,126 motor vehicles entered the park, as compared with 141,267 during 1930. 1931 was the second largest travel year with 461,855 people entering Yosemite as compared with 458,566 people last year, a gain of 3,289 or .71% over 1930. (1927 was the largest travel year when 490,430 people entered the Park). Rail and stage travel both showed large losses. Only 3,743 people came in via rail as compared with 8,726 for 1930 - a loss of 57.1% over 1930. A total of 17,042 people entered by stage over all roads, recording a loss of 20.4% for 1931.

Cars from every state in the Union as well as the following foreign nations and territories entered the park in 1931: England, China, Holland, Australia, Argentina, Haiti, Canada, Panama, Alaska, Porto Rico and the Philippines.

All entrances to the park showed substantial increases over last year except Arch Rock on the All-Year Highway which recorded a loss of 4.5%. The Tioga Pass entrance showed a remarkable gain of 56% for the travel year due to the early opening of the road and the improved road conditions. All mountain road entrances show 10 to 25 per cent. gains indicating that people are getting off the floor of the Valley and into the higher country to a greater extent every year.

530 - Visitors

Honorable W. C. Lankford, Member of Congress, reached Yosemite Park on September 27. He was accompanied by his family, and was met at Merced by one of our men in a Park car. Mr. Lankford was taken on a trip to Glacier Point and the Mariposa Grove, and seemed quite enthusiastic about the national parks which he had visited.

Dr. Elliot Blackwelder, head of the Geology Department at Stanford University, came into the park on September 1 for the special purpose of studying the granite inside the Wawona tunnel.

The following were guests at The Ahwahnee during September:

Count and Countess Guido Roncalli - Washington, D. C. - September 10.

Mr. and Mrs. F. M. Jenifer of Los Angeles - September 12.

Mrs. Richard Lieber of Indianapolis, accompanied by Mrs. Ernest Lindemann - September 17.

Miss Lois Moran - Hollywood - September 17 - 21.

Dr. and Mrs. Andre Martingay, 13 Rue Cassette, Paris - Sept. 21.

540 - Public Camps

All of the summer campgrounds were closed on September 15 and the Winter Camp opened at that time. There are from thirty-five to forty separate camps each day in the Winter Camp; people enjoy the quiet, fall weather and the peacefulness of the Valley at this time of the year; many are taking hikes to Glacier Point, the top of Yosemite Falls and many are motoring to the Big Trees and Glacier Point.

The campground at the Mariposa Grove was closed all month due to lack of water.

600 - Protection

610 - Police Protection

There were ten cases - all for violation of the liquor law - brought before the United States Commissioner this month. Fines totaling \$175.00 were assessed and one man was given a 90-day jail sentence, the first since September 1928. This was an unusual month.

620 - Fire protection

High fire hazard prevailed during the first part of September, but fortunately there were no large fires. Humidity was extremely low and fresh winds prevailed almost every day. The rain on September 25, amounting to .45 inch relieved the serious fire situation and the "No Smoking" restrictions along the mountain roads were removed. Six fire guards were on duty all month and a careful patrol was made of the entire western boundary.

On September 11 a lightning fire burned over 1-1/2 acres near Mather Ranger Station; this fire was quickly put under control by the district ranger and was the only fire of the month. The fire summary to date for this season follows:

Total fires20; total area burned - 1,056 acres
(10 caused by careless smokers)
(8 " by lightning)
(1 " by brush burning operations)
1 thought to be incendiary)

Fire drills were held every week with rangers and shop crews making practice runs with the new Mack Fire Engine to various points on the Valley floor.

660 - Sanitation

Water and milk samples taken during the month were satisfactory

900 - Miscellaneous

The Lewis Memorial Hospital, operating under the direction of Dr. Hartley G. Dewey , handled a total of 248 cases during the month. There were 637 office calls, 36 house calls; and 35 minor operations were performed during September. There were no major operations performed. There was one birth, Oren G. McNeil. There were no deaths.

Church Services

Church Services were the same as were recorded last month.

Mess Operations: The following messes and camps were operated during the month: Laborers' mess with approximately 150 men daily; Rangers' Club with approximately 30 men and women; May Lake Camp 12 men; Mariposa Grove Camp 30 men; Benson Lake Camp 12 men; Washburn Lake camp 12 men; Tenaya Lake Camp 10 men; Tamarack Flat Camp 23 men; and Tuolumne Meadows Camp 12 men.

Very respectfully,

EB

Superintendent

UNITED STATES
DEPARTMENT OF THE INTERIOR
NATIONAL PARK SERVICE

TRAVEL REPORT

Yosemite

National Park for the Month of **SEPTEMBER -- 1931.**

(Close of 1931 travel year, Sept. 30th)

(Close of 1931 travel year, Sept. 30)						
	This Month	This Travel Year To Date	This Month Last Year	Last Travel Year To Date	Increase for Travel Year Oct. 1, 1930 to date	
					Number	Percent
<u>PRIVATE TRANSPORTATION:</u>						
Cars first entry	4040	71042	4028	70009	-7957	-10.1%
Cars reentry	7534	79908	6290	62082	17826	28.7%
Motorcycles	9	175	10	175	00	00
Total motor vehicles	11583	151125	10328	141267	9859	6.9%
Persons entering via motor vehicles	30443	438861	27084	426142	12619	2.9%
Persons entering via other private transportation	47	2409	73	2271	138	6.1%
Total persons entering via private transportation	30490	441070	27157	428413	12657	2.9%
<u>OTHER TRANSPORTATION:</u>						
Persons entering via stages ..	890	17042	12 96	21427	-4385	-20.4%
Persons entering via trains ..	41	3743	512	8726	-4983	-57.1%
Persons entering otherwise						
Total other transportation	931	30785	1908	30153	-9862	-31.1%
GRAND TOTAL ALL VISITORS	31421	451855	28965	458566	3289	0.71%
(NOTE: Increase of 0.71%)						

(NOTE: Increase of 8.4% for September)

	This Year	Last Year	Increase	
			Number	Percent
Automobiles in public camps during month				
Campers in public camps during month				

UNITED STATES
DEPARTMENT OF THE INTERIOR
NATIONAL PARK SERVICE

STATUS OF AUTHORIZED PROJECTS

Yosemite National Park for the Month of September, 1931

Description of Projects		Percent Constructed To Date	Percent Constructed This Month	Percent Constructed Last Month	Probable Date Completion
421	Quarters for Doctor	12	11	1	December, 1931
422	" " Dentist	10	9	1	"
424	Tioga Pass Ranger Station	75	52	23	October, 1931
425	Tuolumne Meadows Comfort Station	100	30	62	---
426	Indian Village Comfort Station	95	65	20	October, 1931
427	Mariposa Grove Comfort Station (1)	95	35	40	"
429	Quarters for Indians	100	3	57	---
435	Garage, Indian Village	100	75	25	---
436	Employee's Quarters	15	14	1	December, 1931
437	Building Improvements Miscell.	25	25	0	May, 1932
455	Telephone Sys. - Ext. & Improv.	90	35	22	June, 1932
481	Water System - " "	80	5	5	May, 1932
482	Sewer System - " "	33	30	3	December, 1931
483	Campground Development	84	4	30	May, 1931
484	Water, Sewer & Sanitation - Tuolumne Meadows	100	3	32	---
486	Landscaping Old Sewer Farm	10	5	0	June, 1932
487	Relocating Indian Village	93	3	32	December, 1931
488	Merced River Revetment	19	4	0	June, 1932
489	Water System - Mariposa Grove	100	13	37	---
490	Sewer System - " " (One sewer system for comfort station completed)	35	15	10	June, 1932
492	Extension Electric System	54	37	17	November, 1931
501.30	Road Signs & Marking Pavements	100	3	1	---
501.34	Quarry Site Cleanup	75	0	0	November, 1931
501.36	Road Shoulders, Floor of Valley	45	27	0	November, 1931
501.39	Happy Isles Development	15	15	0	May, 1932
502.18	Development Wawona Point	1	1	0	August, 1932
503.2	Tioga & Big Oak Flat Betterments	95	10	35	October, 1931
503.3	Road Oiling and Betterments	95	15	70	October, 1931
506.11	Tenaya Trail Jct. to Ten Lakes Trail Construction (% according to construction only)	75	20 (Not indicative)		August, 1932
506.17	Isberg Pass Trail (% according to construction only)	50	15 " "		August, 1932
506.18	Reconditioning Mountain Trails	100	5	22	---
506.19	Nevada Falls - Glacier Pt. Trail	12	12	0	August, 1932
533	Crane Flat Fire Lookout	23	23	0	November, 1931

10-215

24316

UNITED STATES
DEPARTMENT OF THE INTERIOR
National Park Service
Washington

REPORT OF NON-APPOINTED PERSONNEL

(TEMPORARY)
YOSEMITE NATIONAL PARK

Changes outside the District of Columbia for the month of September, 19 51

	Total at beginning of month	Additions	Separations	Net Gain or loss (a)	Total at end- ing of month
Civil Service	115	1	24	-23	92
Per Diem	343	17	70	-53	290
Total	458	18	94	-76	382

(a) If loss, indicate by minus sign.

10-159
(May, 1931)

UNITED STATES
DEPARTMENT OF THE INTERIOR
NATIONAL PARK SERVICE

STATUS OF PERSONNEL

Yosemite National Park for the Month of September 1931

	This Month		This Month Last Year	
	Appointed	Non-Appointed	Appointed	Non-Appointed
Number of employees beginning of month	115	343	115	358
Number of additions	1	17	3	85
Total	116	360	118	443
Number of separations	24	70	30	137
Number of employees close of month	92	290	88	306
Number of promotions during month	0	0	0	0
Aggregate amount of annual leave taken	210	0	86 $\frac{1}{2}$	0
Aggregate amount of sick leave taken	32 $\frac{1}{2}$	0	14	0
Aggregate amount of leave without pay	23	0	25 $\frac{1}{2}$	0

10-160

DEPARTMENT OF THE INTERIOR

NATIONAL PARK SERVICE

REPORT OF PARK REVENUES

Yosemite National Park for the Month of September, 1931.

	This Year	Last Year
Park revenue on hand beginning of month,	2,331.95	
Received,	21,341.78	
Total,	23,673.73	
Remitted,	23,461.32	
On hand close of month,	212.41	
<hr/>		
Park revenues received this year to date,	95,467.81	
Park revenues received last year to date,	114,315.47	
Increase, Decrease	18,847.66	
Per cent of increase Decrease	16.48%	

10-161

UNITED STATES
DEPARTMENT OF THE INTERIOR
NATIONAL PARK SERVICE

REPORT OF SALES OF PUBLICATIONS

	Number	Value
<u>GOVERNMENT PUBLICATIONS:</u>		
On hand beginning of month,	8,563	1,496.05
Received during month,	0	0
Total,	8,563	1,496.05
Sold during month,	1,155	220.50
On hand at close of month,	7,408	1,275.55

NON-GOVERNMENT PUBLICATIONS:

On hand beginning of month,	
Received during month,	
Total,	
Sold during month,	
On hand at close of month,	

Cash on hand beginning of month,	1,097.10
Sales during month,	220.50
Total,	1,317.60
Remitted during month,	712.15
Balance,	605.55

UNITED STATES

DEPARTMENT OF THE INTERIOR

NATIONAL PARK SERVICE

REPORT OF TELEPHONE AND TELEGRAPH BUSINESS

Yosemite National Park for the Month of September, 1931

	This Month	This Month Last Year	Increase	Percent Increase
--	---------------	----------------------------	----------	---------------------

LOCAL BUSINESS

Miles of circuit maintained	342	380	- 38	- 10
No. of telephones connected	390	410	- 20	- 5
No. of measured service calls	520	685	- 165	- 24
No. of other local calls	33,764	36,748	- 2984	- 8
Total No. of local calls	34,284	37,433	- 3149	- 8
Peak load in calls per day	1,465	2,065	- 600	- 29

Receipts from measured service calls	72.10	104.15	-32.05	- 31
Receipts from coin boxes	136.05	20.70	115.35	575
Receipts from telephone rental	27.00	10.50	25.50	250

TOTAL RECEIPTS	235.15	135.35	99.80	74
----------------	--------	--------	-------	----

LONG DISTANCE BUSINESS

No. Outbound calls	1031	1241	- 210	- 17
No. Inbound calls	718	771	- 53	- 7

TOTAL LONG DISTANCE CALLS	1749	2012	- 263	- 13
---------------------------	------	------	-------	------

Peak load in calls per day	91	89	2	2
Receipts from Long Distance business	496.48	563.36	- 66.88	- 12

TELEGRAPH BUSINESS

Messages via Western Union				
Messages via . . P.T.&T.Co.	66	45	21	47

TOTAL MESSAGES

Receipts from telegraph business	
No. of money transfer messages	
No. of money transfer receipts	

TOTAL RECEIPTS TELEPHONE & TELEGRAPH DEPT-

UNITED STATES
DEPARTMENT OF THE INTERIOR
NATIONAL PARK SERVICE

*ELECTRICITY GENERATED, SOLD, USED, ETC.

Yosemite National Park for the Month of September, 1931

	This Month	This Travel Year To Date	This Month Last Year	Last Travel Year To Date	Increase for Travel Year	
					Number	Percent
Current generated,	177,350	1865380	370370	2775930	910,550	- 32
Sold to park operators,	35,579	749380	63598	693217	56,163	8
Sold to others,	0	577500	280633	1711033	1,133,533	- 66
Furnished to other Governmental agencies,	1,219	3754	2355	5620	2,066	- 35
Used by National Park Service, lost in transit, etc.,	140,552	534746	23784	365860	168,886	46
Total current generated, . . .	<u>177,350</u>	<u>1865380</u>	<u>370370</u>	<u>2775930</u>	<u>910550</u>	<u>- 32</u>

Amount receivable from the sale of electricity, . in Valley 1931 \$ 1500.21
1930 1991.13

* Indicated by K. W. H.

Purchased from S.J.L.&P. Corp.	414,043 k.w.h.	=	4123.51
Sold to S.J.L.&P. Corp.	600 "	=	1.80

U. S. Department of Agriculture, Weather Bureau

MONTHLY SUMMARY.

COOPERATIVE OBSERVERS' METEOROLOGICAL RECORD:

Month of September, 1931; Station, Yosemite; County, Mariposa

State, Calif; Latitude, 37; Longitude, 119; Hour of Observation, 4 P.M.
Time used on this form, Pac.

DATE.	TEMPERATURE.				PRECIPITATION.						CHARACTER OF DAY SUNRISE TO SUNSET.	+ MISCELLANEOUS PHENOMENA.
	MAX. MIN.	MIN. MAX.	RANGE.	* SET MAX.	TIME OF BEGINNING.	TIME OF ENDING.	AMOUNT.	SNOWFALL, IN INCHES.	DEPTH OF SNOW ON GROUND AT TIME OF OBSERVATION.	PREFALL- ING WIND DIRECTION.		
1	90	48									Clear	
2	96	45									"	
3	91	41									P. cloudy	
4	84										"	
5	89	46									Clear	
6	87	49									"	
7	81	45									P. cloudy	
8	73	46									"	
9	70	33									Clear	
10	72	36									"	
11	80	36									"	
12	69	43									"	
13	90	49									P. cloudy	
14	82	45									Clear	
15	78	41					.04				"	
16	82	43									"	
17	83	42									"	
18	73	39									P. cloudy	
19	72	39									Clear	
20	78	41									"	
21	81	40									"	
22	75	41									"	
23	70	36									"	
24	81	39									"	
25	75	43									"	
26	82	47					.45				Cloudy	
27	81	45									"	
28	77	39									P. cloudy	
29	72	37									Clear	
30	83	37									Clear	
31												
SUM							.49					
MEAN												

* Reading of maximum thermometer immediately after setting.
† Including rain, hail, sleet, and melted snow.
‡ Thunderstorms, hail, auroras, etc.

(IN TRIPLICATE)

See cover for instructions.

9-213

Post-Office Address.

Office of Chief Ranger
Yosemite National Park, Calif.

TEMPERATURE.

Mean maximum, 80.6

Mean minimum, 42.0

Mean, 61.3

Maximum, 96; date, 2nd

Minimum, 33; date, 9th

Greatest daily range, 51

PRECIPITATION.

Total, .49 inches.

Greatest in 24 hours, .45; date, 25th

SNOW.

Total snowfall, 0 inches; on ground 15th, 0 inches;

at end of month, 0 inches.

NUMBER OF DAYS—

With .01 inch or more precipitation, 2

Clear, 22; partly cloudy, 8; cloudy, 0

DATES OF—

Killing frost, _____

Thunderstorms, _____

Light, _____

Hail Moderate, _____

Heavy, _____

Sleet, _____

Auroras, _____

REMARKS:

Total Seasonal Precipitation, 1.06"

Last year, 1.06"