

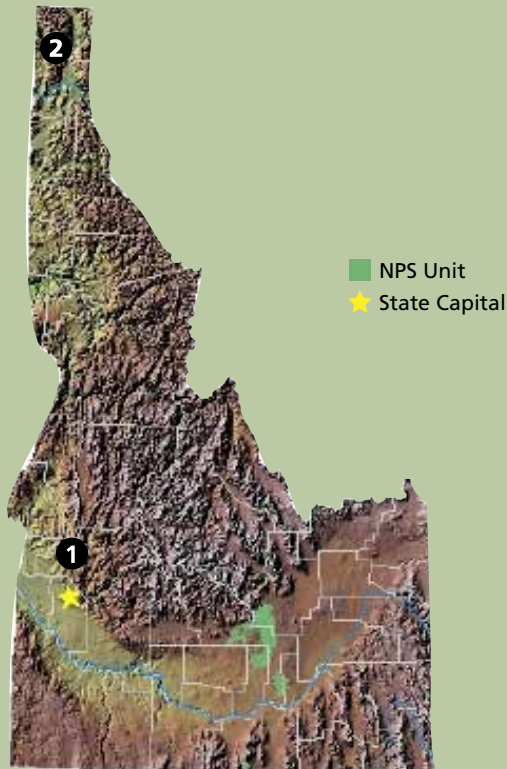


Idaho News



Artist rendering of a water trail campsite along the Lower Clark Fork Water Trail. Sketch: Justin Phillups and Aaron Crowder

PROJECTS AND PARTNERS 2014



CURRENT PROJECTS

1. Payette River Water Trail
West Central Highlands RC&D
2. Pend Oreille River Passage Trail
Priest Community Forest Connection

Find out more about each project starting on page 2.

Recent Successes

Avista Adds Land and Water Trails Along the Lower Clark Fork River

In 2003, the NPS helped Avista Corporation and stakeholder groups develop a trail plan for the Lower Clark Fork River. This effort was part of the adaptive management approach to resource issues described in Avista's Clark Fork Settlement Agreement for relicensing two hydroelectric dams. Since then, Avista and partners have developed both a land and a water trail downstream of Cabinet Gorge Dam.

The new 'Clark Fork Access Site,' located along State Highway 200, about two miles downstream of the dam, is the trailhead and launch site for both trails. The 2.5-mile land trail is a loop that includes five spur trails to the river for fishing access. The water trail extends downstream to Lake Pend Oreille and continues along the north shore of the lake, providing more than 40 miles of water-based recreation opportunities. Eight more access points for the water trail have been developed in partnership with Bonner County, Idaho State Parks, the U.S. Forest Service, Idaho Fish and Game, and the Army Corps of Engineers.



Trail crews built a loop trail with spur trails that lead to the water for fishing access. Photo: Brian Burky

We're Here For You!

Could your project benefit from NPS Staff Assistance? Contact us to find out.

Michael Linde, Program Manager

206.220.4113

michael_linde@nps.gov

Alex Stone

206.220.4108

alex_stone@nps.gov

Dan Miller

360.816.6232

dan_miller@nps.gov

Sue Abbott

206.220.4116

sue_abbott@nps.gov

Susan Rosebrough

206.220.4121

susan_rosebrough@nps.gov

2013 Nationwide Partnership Success

1,357 Miles of Trail Developed

736 Miles of River Conserved

20,270 Acres of Open Space and Parkland Protected

ABOUT US

The Rivers, Trails, and Conservation Assistance program is the community assistance arm of the National Park Service. Program staff provide technical assistance to community groups and local, state, and federal government agencies working to protect natural areas and water resources and enhance close-to-home outdoor recreation opportunities. We help communities plan, organize partnerships, and achieve on-the-ground success on projects they initiate.

www.nps.gov/rtca

Current Projects

1. Payette River Water Trail

Project Partner: Highlands Resource Conservation and Development

NPS Contact: Sue Abbott

Location: Payette, Gem, and Custer Counties

Congressional District: ID - 1

Project Goal

Develop a continuous boating route with improved boating access, portages, and camping areas from Cascade Reservoir to the confluence of the Snake and Boise Rivers.

NPS Role

Work with project partners to form a coalition and action plan for managing the trail.



The Payette River Water Trail includes this whitewater reach on the South Fork between Banks and Garden Valley. Photo: Arin Nesbitt

Project Goal

Develop a 20-mile trail that connects four communities and links to trails continuing east to Sandpoint, Ponderay, and Kootenai.

NPS Role

Assist trail partners with public involvement, visioning, and goals. Explore a design workshop with the Idaho-Montana Chapter of the American Society of Landscape Architects (IMASLA).

2. Pend Oreille River Passage Trail

Project Partner: Priest Community Forest Connection

NPS Contact: Alexandra Stone

Location: Oldtown, Priest River, LaCede, and Dover

Congressional District: ID - 1



Map of the proposed Pend Oreille River Passage Trail from Oldtown to Dover. Map: David Yarnell, Bonner County GIS Department