

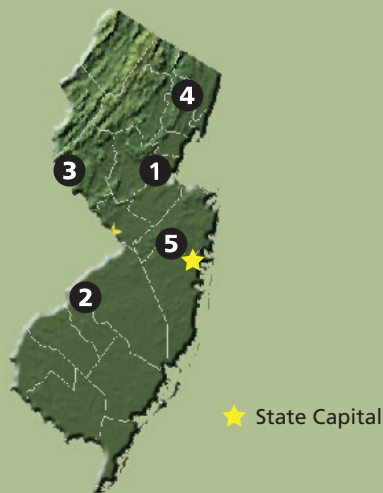


New Jersey News



Paterson Great Falls National Historical Park. Photo: NPS

PROJECTS AND PARTNERS 2013



CURRENT PROJECTS

1. Blue Raritan Water Trail
Rutgers University / Raritan River Collaborative
2. Cherry Hill/Croft Farm Trails and Nature Center
Cherry Hill Township
3. Delaware River Resource Protection Strategic Plan (NJ/PA)
Delaware River Greenway Partnership
4. Morris Canal Greenway
County of Passaic
5. September 11th National Memorial Trail
September 11th National Memorial Trail Alliance

Find out more about each project starting on page 2.

Recent Successes

Morris Canal Greenway, Passaic County, NJ

The Morris Canal Greenway project in Passaic County had a fruitful 2012. The County Board of Chosen Freeholders approved ten thousand dollars for six kiosks, a brochure, and one thousand trail markers for the existing off-road segments of the greenway. The Morris Canal Greenway received a 2012 New Jersey Future Smart Growth Award, and 2012 American Council of Engineering Companies Distinguished Award.



Morris Canal Hike at Garret Mountain Reservation.
Photo: Morris Canal Greenway Facebook

County staff hosted a popular series of Greenway Hikes and History Lessons, upgraded the project website and Facebook pages, and released a public webmap. The county received a Federal Highway Administration grant of \$532,566 through the Transportation, Community, and System Preservation Program to create bike lanes along the proposed Morris Canal Greenway in the cities of Clifton (5 miles) and Paterson (3 miles). The proposed greenway route connects to the new Paterson Great Falls National Historical Park. RTCA is serving as a liaison between Passaic's greenway project and the planning for the new national park.

continued on last page

Current Projects

1. Blue Raritan Water Trail

Project Partners: Rutgers University, Raritan River Collaborative
NPS Contact: Sherry Peck
Location: Raritan River from Branchburg
Congressional Districts: NJ - 6, 7, 11, 12, 13

Project Goal

A 31-mile water trail linking greenways along the Raritan River; educational and outdoor recreation opportunities for families; enhanced appreciation and stewardship of environmental, recreational and historic resources within the Crossroads of the American Revolution National Heritage Area.

NPS Role

Assist with development of public access management plans and river-based recreational programs

2. Cherry Hill, Croft Farm Trails and Nature Center

Project Partner: Cherry Hill Township
NPS Contact: Sherry Peck
Location: Cherry Hill Township
Congressional District: NJ - 1

Project Goal

Increased public awareness & usage of Cherry Hill's trails and natural resources; a concept plan for converting a historic house into an environmental education center; interpretive trail signage.



River Road Park on the Raritan River in Sayreville, NJ. Photo: NPS

NPS Role

Assist with developing concept plan for new Nature Center; developing interpretive and trailhead signage, and marketing plan to increase public awareness and use of trails and natural areas.

3. Delaware River Resource Protection Strategic Plan (NJ/PA)

Project Partner: Delaware River Greenway Partnership
NPS Contact: Sherry Peck
Location: The Delaware Water Gap to the upper Delaware Estuary
Congressional Districts: NJ - 4, 7, 12

Project Goal

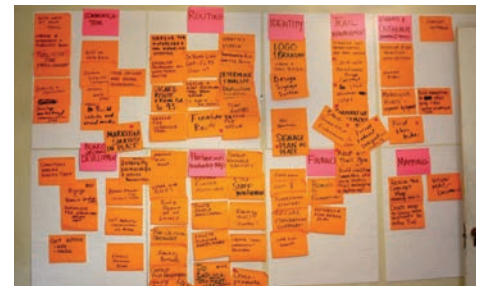
A 5-year strategic plan for the Delaware River Greenway Partnership, focused on its role in protection and stewardship of the natural, cultural and recreational resources of the Delaware River region in NJ & PA.

NPS Role

Facilitate a strategic planning process and assist with producing an action plan; assist with capacity-building of long-time NPS partner organization.

4. Morris Canal Greenway

Project Partner: County of Passaic
NPS Contact: Sherry Peck
Location: Pompton lakes, Wayne, Little



The results of a visioning session for the 9/11 Memorial Trail

Falls, Paterson, Woodland Park, and Clifton
Congressional District: NJ - 9, 11

Project Goal

A safe, contiguous, 25-mile pedestrian and non-motorized bicycle trail along the route of the original Morris Canal in Passaic County, NJ.

NPS Role

Assist with development of Morris Canal Greenway working group and municipal/public involvement in implementation planning and connections to Paterson Great Falls National Historical Park.

5. September 11th National Memorial Trail

Project Partner: September 11th National Memorial Trail Alliance
NPS Contact: Peggy Pings
Location: Seven state triangle including Shanksville, PA (Flight 93 National Memorial), New York City (World Trade Center), Washington DC (Pentagon)
Congressional Districts: NJ - 4, 5, 6, 7, 8, 9, 10, 11, 12

Project Goal

A 1,100-mile hiking, biking and driving trail physically connecting the three national memorials commemorating the tragic events that occurred in 2001.

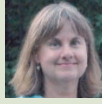
NPS Role

Facilitate determination of trail route through NJ and assist in the development of a Strategic Plan to improve organizational capacity and ensure quality trail management.

We're Here For You.

Could your project benefit from RTCA Staff Assistance?

Contact us to find out.



Sherry Peck
215.597.6478
Sherry_Peck@nps.gov



Peggy Pings
304.293.7528
Peggy_Pings@nps.gov



Jerry Willis
908.461.7596
Jerry_Willis@nps.gov

2012 Nationwide Partnership Success

2,154 Miles of Trail Developed

1,074 Miles of River Conserved

70,385 Acres of Open Space and Parkland Protected

94% Percentage of Community Partners Satisfied

Find more information online at

www.nps.gov/rtca



EXPERIENCE YOUR AMERICA™

Recent Successes cont.

Blue Raritan Water Trail

Under a grant from the NY-NJ Harbor Estuary Program, the Association of New Jersey Environmental Commissions (ANJEC) and project partners established the Lower Raritan Public Access Project. The goal was to raise awareness and stewardship of the Lower Raritan as a recreational, ecological, economic and cultural resource. In 2012, ANJEC developed a set of interpretive posters, available for display at exhibits, community events and gathering sites; a brochure guiding people to recreational and cultural sites along the river; a Google Earth interactive map; and a website, VisitLowerRaritan.org. ANJEC also developed a map sign graphic for use at parks along the Lower Raritan, showing access points, parks, historic features, and additional information. Three towns with river access sites will each receive a professional, weather-proof sign, with costs covered by the Estuary Program grant. Middlesex County staff are working with towns to develop safety signage and to improve wayfinding signage for intersections near Lower Raritan River access sites.



Views of the Lower Raritan River. Photos: NPS

ABOUT US

The Rivers, Trails, and Conservation Assistance (RTCA) Program is the community assistance arm of the National Park Service. RTCA staff provides technical assistance to community groups and local, state, and federal government agencies working to protect natural areas and water resources and enhance close-to-home outdoor recreation opportunities. We help communities plan, organize partnerships, and achieve on-the-ground success on projects they initiate.