

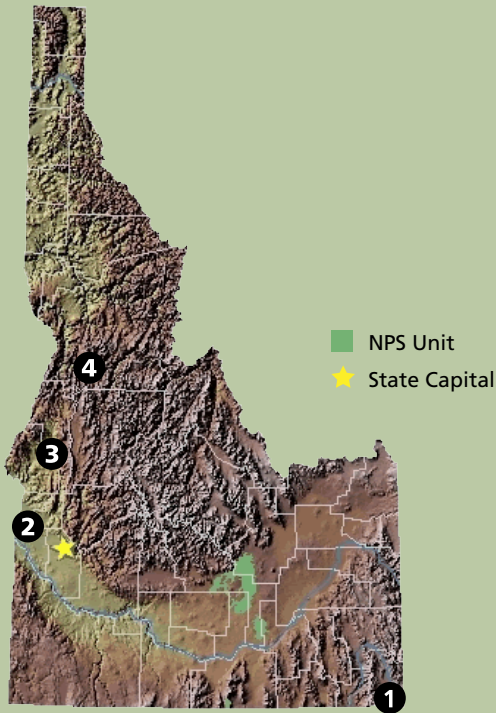


# Idaho News



The 85-mile Weiser River Trail, recently designated a National Recreation Trail, connects communities between Weiser and New Meadows.  
Photo: Friends of the Weiser River Trail

## PROJECTS AND PARTNERS 2011



- 1. Bear Lake Heritage Pathway**  
Bear Lake Regional Commission
- 2. Idaho-Oregon Snake River Water Trail**  
Canyon County Parks, Recreation, and Waterways
- 3. McCall Pathways**  
City of McCall
- 4. Riggins Whitewater Park**  
City of Riggins

Find out more about each project starting on page 2

## Recent Successes

### Rathdrum Unites To Protect Their Mountain

In 2001, RTCA helped the City of Rathdrum and Panhandle Lakes RC&D design a planning process to address development concerns on their landmark mountain. First, Northern Idaho College conducted a resource inventory and then University of Idaho Landscape Architecture students helped the community create scenarios for development and protection. Finally, residents selected a preferred alternative that resulted in total protection of the Mountain, allowing for future community trails and recreation.

*“RTCA helped us engage the community in a way that has never happened before.”*

- Pete Stoltz  
Rathdrum Gem Community Committee Member

### Weiser River Trail Wins ‘NRT’ Designation

The nationally acclaimed Weiser River Trail, an 85-mile rail-trail connecting communities between Weiser and New Meadows, was designated a National Recreation Trail (NRT) by the Secretary of Interior as part of the 2010 National Trails Day celebrations. The Weiser River Trail is now one of more than 1,000 trails across the country recognized for their exemplary standards and their local and regional significance. The non-profit “Friends of the Weiser River Trail” built and maintained the trail over the last 13-years, and RTCA recently provided assistance in evaluating expanded trail access and the potential for a larger community greenway in Weiser.

## We're Here For You.

Could your project benefit from RTCA Staff Assistance? Contact us to find out.

### Michael Linde, Program Manager

206.220.4113  
michael\_linde@nps.gov

### Alex Stone

206.220.4108  
alex\_stone@nps.gov

### Bryan Bowden

360.569.2211 ext 2306  
bryan\_bowden@nps.gov

### Dan Miller

360.816.6232  
dan\_miller@nps.gov

### Sue Abbott

206.220.4116  
sue\_abbott@nps.gov

### Susan Rosebrough

206.220.4121  
susan\_rosebrough@nps.gov

## 2010 Nationwide Partnership Success

- 1,251 Miles of Trail Developed
- 1,694 Miles of River Conserved
- 25,370 Acres of Open Space and Parkland Protected
- 94% Percentage of Community Partners Satisfied

## About Us

The Rivers, Trails, and Conservation Assistance (RTCA) Program is the community assistance arm of the National Park Service. RTCA staff provides technical assistance to community groups and local, state, and federal government agencies working to protect natural areas and water resources and enhance close-to-home outdoor recreation opportunities. We help communities plan, organize partnerships, and achieve on-the-ground success on projects they initiate.

[www.nps.gov/rtca](http://www.nps.gov/rtca)

# Current Projects

## 1. Bear Lake Heritage Pathway

Lead Partner: Bear Lake Regional Commission

Intermountain and Pacific West RTCA offices are teaming up to provide assistance to this regional bi-state trail project located in SW Idaho and NE Utah. Project proponents envision a 52-mile non-motorized pathway around Bear Lake.



Riggins counts increased recreation and an economic boost to downtown business as benefits of the new trail and whitewater park they are planning.

## 2. Idaho-Oregon Snake River Water Trail

Lead Partner: Canyon County Parks, Recreation, and Waterways

RTCA is helping a broad range of partners build a coalition to plan a 205-mile, multi-use water trail from Three Island Crossing State Park, ID, and Farewell Bend State Park, OR. Public awareness of river resources and access to the water are key project goals.



Partners for the 205-mile ID-OR Snake River Water Trail look forward to community outreach in spring 2011 that features a travelling 18-panel kiosk display. Photo: NPS



The City of McCall wants to optimize community trail connections with federal and state lands on both sides of town. Graphic: City of McCall

## 3. McCall Pathways

Lead Partner: City of McCall

RTCA is working with the city of McCall and its partners to produce a Pathways Plan that links schools and other city destinations with Payette Lake, nearby Ponderosa State Park, Payette National Forest and proposed Valley County Pathways.

## 4. Riggins Whitewater Park

Lead Partner: City of Riggins

This park, at the confluence of the Salmon and Little Salmon Rivers, is envisioned to create fishing opportunities, ADA accessibility, trails and an in-stream whitewater park for kayakers. RTCA is working with the city to help guide the park's development.