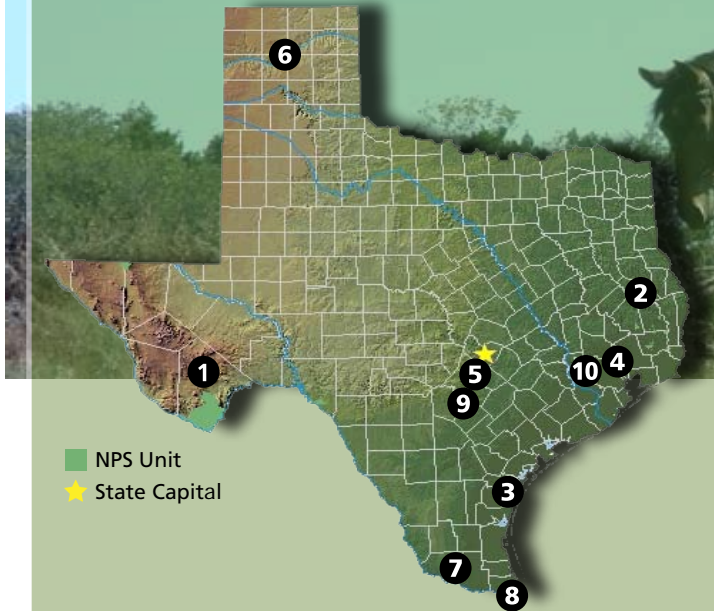




Texas News



PROJECTS AND PARTNERS 2010

CURRENT PROJECTS

- 1. Alpine Regional Trails**
City of Alpine, Parks Advisory Board
- 2. Angelina County Multi-Use Trail System**
The Conservation Fund
- 3. Corpus Christi Trails**
Coastal Bend Bays Foundation
- 4. Greens Bayou Corridor**
Green Bayou Corridor Coalition
- 5. Hays County Dahlstrom Ranch**
Hays County, Hill Country Conservancy
- 6. Lake Meredith Multi-Use Trails**
Lake Meredith National Recreation Area
- 7. Lower Rio Grande Valley Trails Network**
Los Caminos Del Rio
- 8. Mexican American Conflict Heritage Collaborative**
Palo Alto Battlefield National Historical Park
- 9. San Antonio Greenways**
City of San Antonio Parks and Recreation Department
- 10. West Houston Energy Corridor Trail System**
Energy Corridor District

Find out more about each project starting on page 2



Slaughter Creek Trail offers a rare opportunity in Austin to ride horses.
Photo credit: Britt Jones, Austin Ridge Riders

Recent Successes

Multi-use Trail Opens on Sensitive Water Protection Lands

Mountain bikers, hikers, and equestrians all had a hand in creating the Slaughter Creek Trail, a new five-mile, multiuse path in Austin, TX. After a decade of collaboration, the trail became a reality in September 2009. It all began in 1999, when the City of Austin began purchasing lands in the Edwards Aquifer recharge zone to protect the water quality and quantity of its treasured Barton Springs. The site managers had no budget for public access, so a stakeholder steering committee was formed to develop recommendations for adding recreational and educational trails to these environmentally sensitive lands, through partnerships and volunteer work. The City's Slaughter Creek Unit, a 658-acre former ranch, offered the best bet for allowing use by all three trail-use types. A portion of the 5-mile system is designed to meet Americans with Disabilities Act guidelines.

RTCA helped the project partners by convening the Slaughter Creek Trail interest group to recommend locations for the trails and parking areas, develop trail management plans, and identify how the trail interest groups would fund and build the trail. RTCA helped the group with its successful application for National Recreational Trail Funds. The group's plans had to be

ABOUT US

The Rivers, Trails, and Conservation Assistance (RTCA) Program is the community assistance arm of the National Park Service. RTCA staff provide technical assistance to community groups and local, state, and federal government agencies working to protect natural areas and water resources and enhance close-to-home outdoor recreation opportunities. We help communities plan, organize partnerships, and achieve on-the-ground success on projects they initiate.

continued on page 5

Current Projects

1. Alpine Regional Trails

Project Partner: City of Alpine, Parks Advisory Board
RTCA Contact: Kathryn Nichols
Location: City of Alpine, West Texas

Project Goal

A network of publicly accessible greenways and multi-use trails linking Sul Ross University, town destinations, and natural and cultural resources. Improved community awareness and stewardship of the Alpine Creek watershed, including completion of a funded trail along Alpine Creek.

RTCA Role

Facilitate the development of a regional recreation and transportation trail plan mindful of watershed protection strategies and sensitive to stream crossings of Alpine and Little Alpine Creeks. Assist partners with developing interpretive signage on watershed protection; flash flood safety; riparian, biotic and wildlife information.

2. Angelina County Multi-Use Trails System

Project Partner: The Conservation Fund
RTCA Contact: Kathryn Nichols
Location: East Texas county of 83,000, including cities of Lufkin, Diboll, and Huntington

Project Goal

A 75-mile system of land and water trails that links citizens and their recreation visitors to area attractions that include Neches and Angelina Rivers, Angelina and Davy Crockett National Forests, Lake Sam Rayburn, and the proposed Neches River National Wildlife Refuge.

RTCA Role

Continue working with steering committee to identify priorities for trails and help plan and implement an outreach process to develop further community support for priority trails. Help partners develop a map and

planning document for distribution. Assist partners in developing implementation strategies, including funding.

3. Corpus Christi Trails

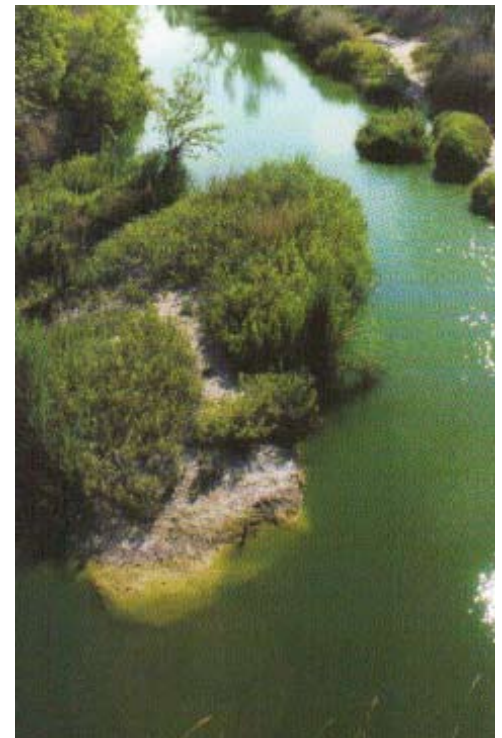
Project Partner: Coastal Bend Bays Foundation
RTCA Contact: Marta Newkirk
Location: City of Robstown, Texas to Oso Bay in Corpus Christi, Texas.

Project Goal

A trail from Corpus Christi to the proposed Padre Island National Seashore paddling trail on Oso Bay (Gulf of Mexico) offering a wide variety of outdoor recreational opportunities, including kayaking, hiking, walking, biking, and horseback riding.

RTCA Role

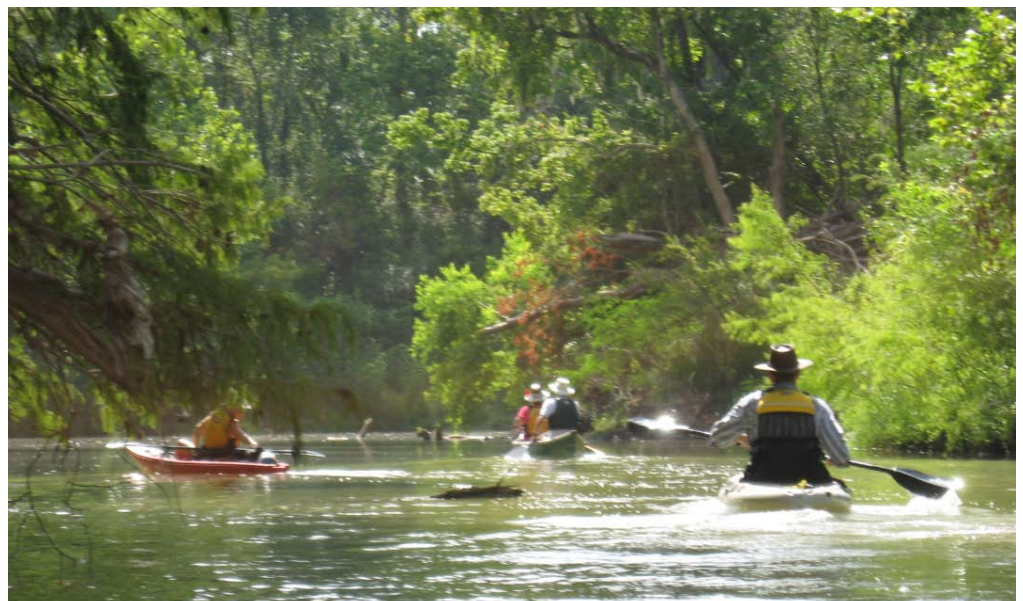
Develop a process to broaden and expand diverse stakeholder participation which may include coordination of partnership activities, identification of financial needs and funding sources, building collaboration between parties, and submitting completed funding applications.



Scenic Oso Creek greenbelt holds potential for nature recreation.

4. Greens Bayou Corridor

Project Partner: Greens Bayou Corridor Coalition
RTCA Contact: Kathryn Nichols
Location: Harris County and cities of Houston, Jersey Village, Jacinto City, Galena Park, and Humble



Paddling trails will be developed as one part of the Greens Bayou corridor project. Photo credit: Greens Bayou Corridor Coalition

Current Projects cont.

Project Goal

Improvements to a 45-mile bayou corridor including park land and easement acquisition, trail development, 9-mile paddle trail establishment, bayou clean up programs, and corridor landscaping. Development of parks in cooperation with Harris County Flood Control District, construction of an outdoor classroom, development of a 1,500 acre tract of land into bike trails, and removal of invasive species along the trail in the South Reach.

RTCA Role

Help Coalition develop a strategic plan for Greens Bayou Corridor, focusing on linear parks; land and water trails; connectivity opportunities; acquiring adjacent open space; conservation & landscaping greenway corridor. Identify gaps in stakeholder participation and engage stakeholders in planning process. Identify funding sources and partnerships.

“RTCA has been a great partner in helping us make history in Hays County. It’s a landmark effort between local governments, private landowners, and the federal government to conserve ranch lands, protect water quality, and create educational trails for the public.”

- Commissioner Jeff Barton, Hays County

5. Hays County Dahlstrom Ranch

Project Partners: Hill Country Conservancy, Hays County
RTCA Contact: Kathryn Nichols
Location: Buda, Hays County, Texas



Dahlstrom Ranch stakeholders help layout trails.

Project Goal

Develop several miles of trails accessible to the public within 370 acres of open space and preserve 2,235 acres of critical recharge land and 1.75 miles of Onion Creek frontage.

RTCA Role

Continue facilitating steering committee, complete a public access plan, and assist with public review of the plan. Help partners develop an interim public use strategy and recommendations for operations and maintenance. Convene a group of partners to develop educational programming for youth and the public at large.

between the park areas of Fritch Fortress and South Turkey Creek, allowing visitors to see topography from a new perspective and encourage active recreation opportunities for residents and visitors.

RTCA Role

Assist park staff in building relationships with the International Mountain Bicycling Association and other partners in the Texas panhandle area that can support the planning and development of the trail network. Develop a civic engagement process for trail planning. Bring technical trails knowledge and skills to the project.

6. Lake Meredith Multi-Use Trails

Project Partner: Lake Meredith National Recreation Area
RTCA Contact: Attila Bality
Location: Lake Meredith National Recreation Area

Project Goal

Create alternative, land-based recreation activities as reservoir levels recede. Build 40-60 miles of new mountain bicycle and multi-use trails

7. Lower Rio Grande Valley Trails Network

Project Partner: Los Caminos Del Rio
RTCA Contact: Marta Newkirk
Location: Communities in Webb, Zapata, Starr, Hidalgo, and Cameron Counties

Project Goal

A 13-mile demonstration trail that will eventually link 80 miles of trails in irrigation drainages or levees in existing rights of way in Webb, Zapata, Starr, Hidalgo and Cameron Counties.

Current Projects cont.

RTCA Role

Provide technical assistance to develop standards and priorities for trail development. Assist with identifying and contacting collaborators and interested partners and locating funding to implement one or two demonstration trail projects.

8. Mexican American Conflict Heritage Collaborative

Project Partner: Palo Alto Battlefield National Historical Park

RTCA Contact: Katherine Faz

Location: Lower Rio Grande Valley corridor

Project Goal

Completion of a bilingual documentary film that will educate the public on the importance of protecting and interpreting 19th Century Military conflict sites. Create a celebratory event to screen the movie at three different locations in South Texas and Northeastern Mexico.

RTCA Role

RTCA will provide support to the Palo Alto Battlefield National Historical Park by facilitating discussions on the documentary film's interpretive

themes and format, identifying source materials and interviewees to be included in the film, and locating a production company to complete the bilingual film.

9. San Antonio Greenways

Project Partner: City of San Antonio Parks and Recreation Department

RTCA Contact: Kathryn Nichols

Location: City of San Antonio

Project Goal

A 45-mile trail system along creek and river greenbelts and 20-30 miles of greenway corridor acquisition to connect to the existing 27-mile citywide creekway trail system.

RTCA Role

Develop processes to rate potential trails, gather public input, and engage the public in supporting priority trails. Help scope locations for future trail extensions and connections and assess site suitability. Help identify priority trail corridors for various sources of funding.

10. West Houston Energy Corridor System

Project Partner: Energy Corridor District

RTCA Contact: Kathryn Nichols



San Antonio partners will preserve well-sited mountain bike trails while finding locations for new hard-surfaced trails.

Location: Developed neighborhoods along Interstate Highway 10 & State Highway 6

Project Goal

100+ miles of shared use trail that will provide key linkages to an existing 35-mile trail to create an interconnected network.

RTCA Role

Help partners complete the master plan document with a prioritized GIS trail map and design, management, and use guidelines. Develop implementation strategies with proposed partners and potential funding sources.



The Mexican American Conflict Collaborative project seeks to engage stakeholders from Texas and northeastern Mexico in discussions about the importance of historic preservation.



New trails are slated for many of West Houston's creek banks.

We're Here For You.

Could your project benefit from RTCA Staff Assistance? Contact us to find out.

Kathryn Nichols

512.245.7246
kathryn_nichols@nps.gov

Marta Newkirk

512.245.7232
marta_newkirk_de_la_garza@nps.gov

Katherine Faz

512.245.7263
kathy_faz@nps.gov

Attila Bality

505.270.5920
attila_bality@nps.gov

2009 Nationwide Partnership Success

3,411 Miles of Trail Developed

2,664 Miles of River Conserved

87,385 Acres of Open Space and Parkland Protected

97% Percentage of Community Partners Satisfied

Find more information online at

www.nps.gov/rtca



EXPERIENCE YOUR AMERICA™

Recent Successes cont.

approved by City of Austin site managers to ensure that trail use would not hurt the site's ability to filter water into the aquifer and creeks. RTCA also helped the partners develop a plan to close the site, and to monitor and fix any erosion problems due to trail use.

Major partners included Austin Water Utility, landowner and manager; Austin Ridge Riders, the primary volunteer trail-building leaders and stewards; Hill Country Foundation, educational sign developers and tour guide trainers; and Texas Parks & Wildlife, grantor of Recreation Trail Funds. Many individuals volunteered time on weekends to build the trail to International Mountain Bike Association standards for sustainable, single-track trails.



RTCA facilitates a two-day training on the care of objects collection in South Texas in collaboration with the Western Archeological Conservation Center in Tuscon, AZ and Palo Alto Battlefield National Historic Park.

Bi-National Workshops Enhance Historic Resources in Texas and Mexico

Historic preservationists and preservation advocates from across Texas and northeastern Mexico participated in a two-day training workshop in June 2009 in Brownsville, TX. The workshop was the third bi-national workshop supported by RTCA and Palo Alto Battlefield in their efforts to promote stronger trans-national relationships and greater visibility of natural and cultural resources with historic, artistic, and archeological value to the collective 19th century military history of south Texas and northeastern Mexico.

Representatives from the American Battlefield Protection Program (ABPP) and the Western Archeological Conservation Center (WACC) delivered valuable information about preparing battlefield protection plans and preventing deterioration of objects collections. The second day of the workshop included a field trip to the Palmito Ranch battlefield, managed by the U.S. Fish and Wildlife Services (USFWS) inside Laguna Atascosa National Wildlife Refuge, where workshop participants were presented information on the importance of collaboration with non-profit groups, and state and federal agencies to maintain protection of historic sites and strengthen ties with other historic site managers. Elements of a battlefield and various preservation techniques to maintain the integrity of a battlefield landscape were also presented by ABPP and Palo Alto during the field trip.

These workshops are part of Palo Alto Battlefield's continuing effort to establish stronger connections with communities outside the park boundaries and across the Mexican border. "The collaborations with U.S. and Mexican partners are essential to identify and gain support for initiatives to preserve and protect natural and cultural resources outside of the park's boundaries," said Palo Alto Superintendent Mary Kralovec. "In doing so, they will enable the public to experience natural and cultural sites in southeast Texas and in Mexico that relate to the history and interpretation of Palo Alto Battlefield National Historic Site and other 19th century sites of military conflict."