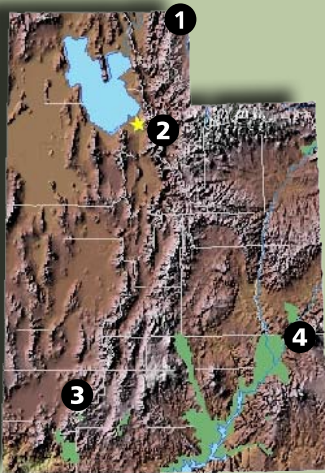




Utah News



Left: The pedestrian and bike bridge connects the area's trail system.
Right: The Lions Park Planning Group discusses the park's design options.



- NPS Unit
- ★ State Capital

PROJECTS AND PARTNERS 2010

CURRENT PROJECTS

1. Bear Lake Heritage Trail
Bear Lake Regional Council
2. Salt Lake City Canal - Rail Trail
Salt Lake City
3. Brian Head Trail & Interpretive Plan
Town of Brian Head
4. Lions Park Trail and Transportation Hub
City of Moab

Find out more about each project starting on page 2.

Recent Success

Lions Park Planning Group Initiates Design

Since 2002, the Lions Park Planning Group in Moab, UT, has been working to transform Lions Park, a five-acre trail and transportation hub, into the town's gateway park and to highlight the area's abundant recreational opportunities. In 2010, through the assistance of RTCA, this vision will come true.

"RTCA has been the critical catalyst in moving the Lion's Park Project from a great idea to a viable plan."

- Bob Greenburg,
Member, Grand County
Council

With a planning group of more than 15 citizens, agency representatives and advocacy organizations, the Lions Park project has quickly moved from idea to realization. It began in 2008 when the Moab Trails Alliance approached RTCA for help revising the Lions Park Design Concept Plan, which originally was developed in 2002 by Utah State University Extension Service.

continued on page 3

ABOUT US

The Rivers, Trails, and Conservation Assistance (RTCA) Program is the community assistance arm of the National Park Service. RTCA staff provide technical assistance to community groups and local, state, and federal government agencies working to protect natural areas and water resources and enhance close-to-home outdoor recreation opportunities. We help communities plan, organize partnerships, and achieve on-the-ground success on projects they initiate.

Current Projects

1. Bear Lake Heritage Pathway

Project Partner: Bear Lake Regional Commission

RTCA Contact: Marcy DeMillion

Location: Rich County, Utah &

Bear Lake County, Idaho

Congressional Districts: UT-1, ID -2

Project Goal

Develop a regional partnership and committee to focus on planning a 50-mile trail around Bear Lake.

RTCA Role

Assist in the formulation of a partnership and steering committee, help to develop a project vision, and provide trail planning expertise for a two-state and two-county trail.



Left: The Salt Lake City Canal-Rail Trail before the proposed improvements.

Right: Vision for the Canal-Rail Trail after the proposed improvements.

2. Salt Lake City Canal-Rail Trail

Project Partner: Salt Lake City

RTCA Contact: Kay Salazar

Location: West Salt Lake City

Congressional District: 2

Project Goal

Develop and connect the 900 South abandoned rail line with the proposed Surplus Canal Trail, expanding Salt Lake City's trail network by 5.4 miles. The trails will provide greater regional connectivity for a major east-west link to the 50-plus mile Jordan River Trail System.

RTCA Role

Assist Salt Lake City and partners with planning and development of a community rail trail including concepts for outdoor education, safe routes for students, community gardens, neighborhood gathering areas, mixed-use, natural areas and recreation opportunities.

intellectually and emotionally connects users with the area's recreational, natural, scenic and cultural resources.

RTCA Role

Assist the Town of Brian Head with the development of a trails and interpretive master plan. RTCA is helping with trailhead design, providing trail mapping and design services to the community, Brian Head Resort, the Dixie National Forest and Cedar Breaks National Monument to meet RTCA's strategic initiative of Connecting Communities to National Parks.

3. Brian Head Trails and Interpretive Planning

Project Partner: Town of Brian Head

RTCA Contact: Marcy DeMillion

Location: Brian Head and

surrounding public lands

Congressional District: 2

Project Goal

For Brian Head and its partners to create and maintain a sustainable, environmentally sensitive, multi-use trail system that physically,

4. Lions Park Trail and Transportation Hub

Project Partner: City of Moab

RTCA Contact: Marcy DeMillion

Location: Moab

Congressional District: 2

Project Goal

Develop a transportation and trail hub and park designs for Lions Park. The park will serve as a gateway into the community of Moab and will include a multitude of site and trail amenities.

RTCA Role

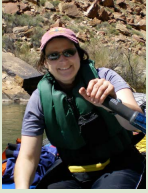
Facilitate and coordinate the planning group meetings. RTCA, in partnership with Utah State Extension, has provided the design guidelines necessary to hire a consultant to complete the park and trail designs.



From left to right: Peg Simons, Brian Head Planning Commissioner; Henry Hornberger, Brian Head Ski Resort Manager; Marcy DeMillion, Utah RTCA Program Coordinator; Bryce Haderlie, Brian Head Town Manager; and Tom Stratton, Brian Head Public Works Director, analyze land ownership within the Brian Head Trail system.

We're Here For You.

Could your project benefit from RTCA Staff Assistance? Contact us to find out.



Marcy DeMillion
801.741.1012, ext. 125
marcy_demillion@nps.gov



Kay Salazar
303.969.2857
kay_salazar@nps.gov

2009 Nationwide Partnership Success

3,411 Miles of Trail Developed

2,664 Miles of River Conserved

87,385 Acres of Open Space and Parkland Protected

97% Percentage of Community Partners Satisfied

Find more information online at www.nps.gov/rtca



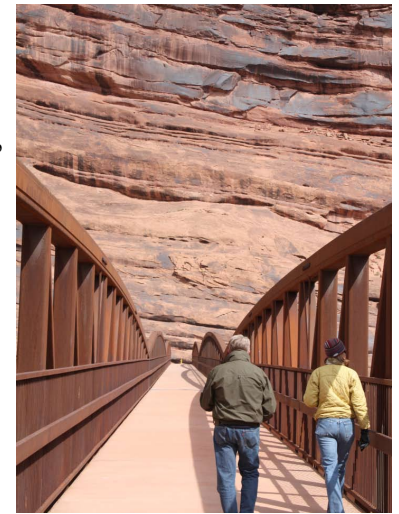
EXPERIENCE YOUR AMERICA™

Recent Success cont.

RTCA worked with the City of Moab, Grand County, and the park planning group to apply successfully for a National Park Service Connecting Communities to Parks grant for trail and park design. Because of its proximity to the Old Spanish Historic Trail, the Slickrock National Recreation Trail, and Arches National Park, Lions Park was among only a handful of projects across the country that received grants.

The redesigned park will connect numerous trails, including the Colorado River Trail, the Slickrock National Recreation Trail, and a bike trail to Canyonlands National Park and Dead Horse Point State Park. A pedestrian bridge links trails on the south and north sides of the Colorado River. On the south side of Utah State Route 191, the park's transit hub will serve as a collecting area for commercial and private excursions into the area's extensive trail network.

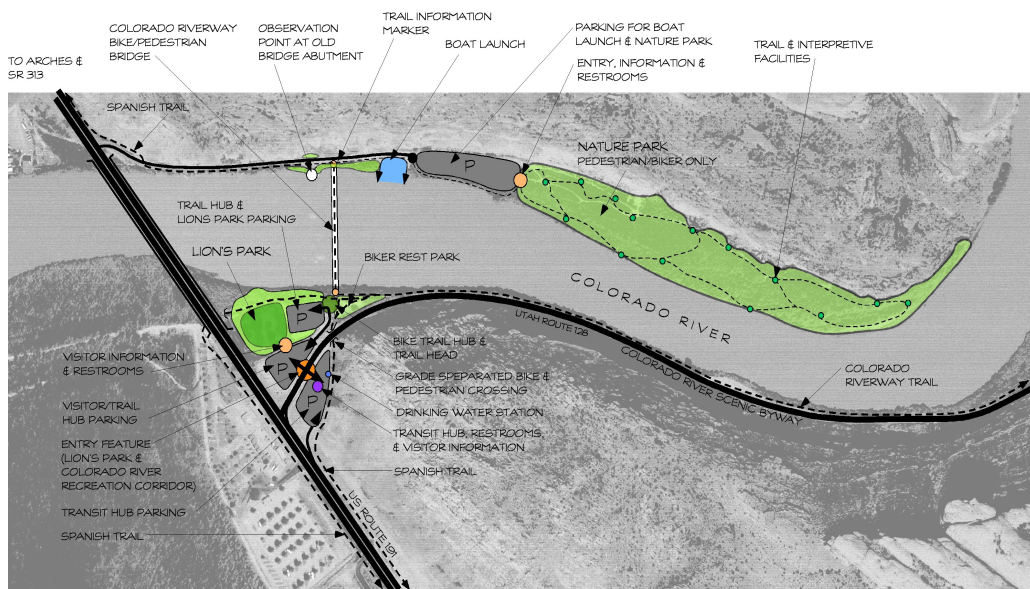
In addition to helping with site and trail design, RTCA is working with the Lions Park group to form a committee that will develop interpretive themes highlighting recreational opportunities as well as natural and cultural resources. When the project is completed, Lions Park will be a critical link in the Colorado River recreational trail system, serving as a gateway to Moab and the public lands that surround it.



David Bell, Utah State Extension, and Kim Schappert, Moab Trails Alliance, walk across a new pedestrian bridge providing trail access on both sides of the Colorado River.

“Everybody (in the planning group) feels this is going to create a very important amenity for the community.”

- Kim Schappert, Moab Trails Alliance & Member, Lions Park Planning Group



PRIMARY BIKE AND PEDESTRIAN TRAILS
SECONDARY BIKE AND PEDESTRIAN TRAILS



TRAIL & TRANSPORTATION HUB, LIONS PARK, & NORTH SIDE NATURE PARK & BOAT LAUNCH
CONCEPT PLAN
MOAB, GRAND COUNTY, UTAH
DECEMBER 2009

Above: The Lions Park Trail and Transportation Hub Concept Plan, by Utah State Extension and RTCA.