



Otho Poole Residence  
506 NW Hermosa Blvd.  
Portland, Multnomah County, Oregon 97210

Location: NW ELEVATION

Copy Negative:

Heritage Investment Corporation  
123 NW Second Avenue #200  
Portland, Oregon 97209

Dale Archer Photography 1990

1 of 19



Otho Poole Residence  
506 NW Hermosa Blvd.  
Portland, Multnomah County, Oregon 97210

Location: FRONT ENTRY NW ELEVATION

Copy Negative:

Heritage Investment Corporation  
123 NW Second Avenue #200  
Portland, Oregon 97209

Dale Archer Photography 1990

2 of 19



Otho Poole Residence  
506 NW Hermosa Blvd.  
Portland, Multnomah County, Oregon 97210

Location: SE ELEVATION

Copy Negative:

Heritage Investment Corporation  
123 NW Second Avenue #200  
Portland, Oregon 97209

Dale Archer Photography 1990

3 of 19



Otho Poole Residence  
506 NW Hermosa Blvd.  
Portland, Multnomah County, Oregon 97210

Location: N. ELEVATION

Copy Negative:

Heritage Investment Corporation  
123 NW Second Avenue #200  
Portland, Oregon 97209

Dale Archer Photography 1990

4 of 19





Otho Poole Residence  
506 NW Hermosa Blvd.  
Portland, Multnomah County, Oregon 97210

Location: E. ELEVATION

Copy Negative:

Heritage Investment Corporation  
123 NW Second Avenue #200  
Portland, Oregon 97209

Dale Archer Photography 1990

5 of 19



OTHO POOLE RESIDENCE

~~The Biltmore Apartments~~

~~2014 NW Glisan~~ 506 NW HARMOSA BLVD.  
Portland, Multnomah County, Oregon 97210

Location: N. ELEVATION ENTRY

Copy Negative:

Heritage Investment Corporation  
123 NW Second Avenue #200  
Portland, Oregon 97209

Dale Archer Photography 1990

4 of 19



Otho Poole Residence  
506 NW Hermosa Blvd.  
Portland, Multnomah County, Oregon 97210

Location: WINDOWS, E. ELEVATION

Copy Negative:

Heritage Investment Corporation  
123 NW Second Avenue #200  
Portland, Oregon 97209

Dale Archer Photography 1990

7 of 19



Otho Poole Residence

506 NW Hermosa Blvd.

Portland, Multnomah County, Oregon 97210

Location: 2ND FLOOR WINDOWS, E. ELEVATION

Copy Negative:

Heritage Investment Corporation

123 NW Second Avenue #200

Portland, Oregon 97209

Dale Archer Photography 1990

8 of 19





Otho Poole Residence  
506 NW Hermosa Blvd.  
Portland, Multnomah County, Oregon 97210

Location: CHIMNEY E. ELEVATION

Copy Negative:

Heritage Investment Corporation  
123 NW Second Avenue #200  
Portland, Oregon 97209

Dale Archer Photography 1990

9 of 19



Otho Poole Residence  
506 NW Hermosa Blvd.  
Portland, Multnomah County, Oregon 97210

Location: FRONT ENTRY LOOKING W

Copy Negative:

Heritage Investment Corporation  
123 NW Second Avenue #200  
Portland, Oregon 97209

Dale Archer Photography 1990

10 of 19



Otho Poole Residence  
506 NW Hermosa Blvd.  
Portland, Multnomah County, Oregon 97210

Location: 1ST FLOOR LANDING & FRONT ENTRY, LOOKING W

Copy Negative:

Heritage Investment Corporation  
123 NW Second Avenue #200  
Portland, Oregon 97209

Dale Archer Photography 1990

11 of 19



Otho Poole Residence  
506 NW Hermosa Blvd.  
Portland, Multnomah County, Oregon 97210

Location: MAIN STAIR DETAIL

Copy Negative:

Heritage Investment Corporation  
123 NW Second Avenue #200  
Portland, Oregon 97209

Dale Archer Photography 1990

12 of 19





Otho Poole Residence  
506 NW Hermosa Blvd.  
Portland, Multnomah County, Oregon 97210

Location: E. ENTRY FOYER

Copy Negative:

Heritage Investment Corporation  
123 NW Second Avenue #200  
Portland, Oregon 97209

Dale Archer Photography 1990

13 of 19



Otho Poole Residence

506 NW Hermosa Blvd.

Portland, Multnomah County, Oregon 97210.

Location: LIVING ROOM ENTRY LOOKING S

Copy Negative:

Heritage Investment Corporation

123 NW Second Avenue #200

Portland, Oregon 97209

Dale Archer Photography 1990

14 of 19



Otho Poole Residence  
506 NW Hermosa Blvd.  
Portland, Multnomah County, Oregon 97210

Location: LIVING ROOM LOOKING EAST

Copy Negative:

Heritage Investment Corporation  
123 NW Second Avenue #200  
Portland, Oregon 97209

Dale Archer Photography 1990

15 of 19



Otho Poole Residence

506 NW Hermosa Blvd.

Portland, Multnomah County, Oregon 97210

Location: LIVING ROOM FIREPLACE LOOKING N

Copy Negative:

Heritage Investment Corporation

123 NW Second Avenue #200

Portland, Oregon 97209

Dale Archer Photography 1990

16 of 19





Otho Poole Residence

506 NW Hermosa Blvd.

Portland, Multnomah County, Oregon 97210

Location: DINING ROOM LOOKING SW

Copy Negative:

Heritage Investment Corporation

123 NW Second Avenue #200

Portland, Oregon 97209

Dale Archer Photography 1990

17 of 19



Otho Poole Residence  
506 NW Hermosa Blvd.  
Portland, Multnomah County, Oregon 97210

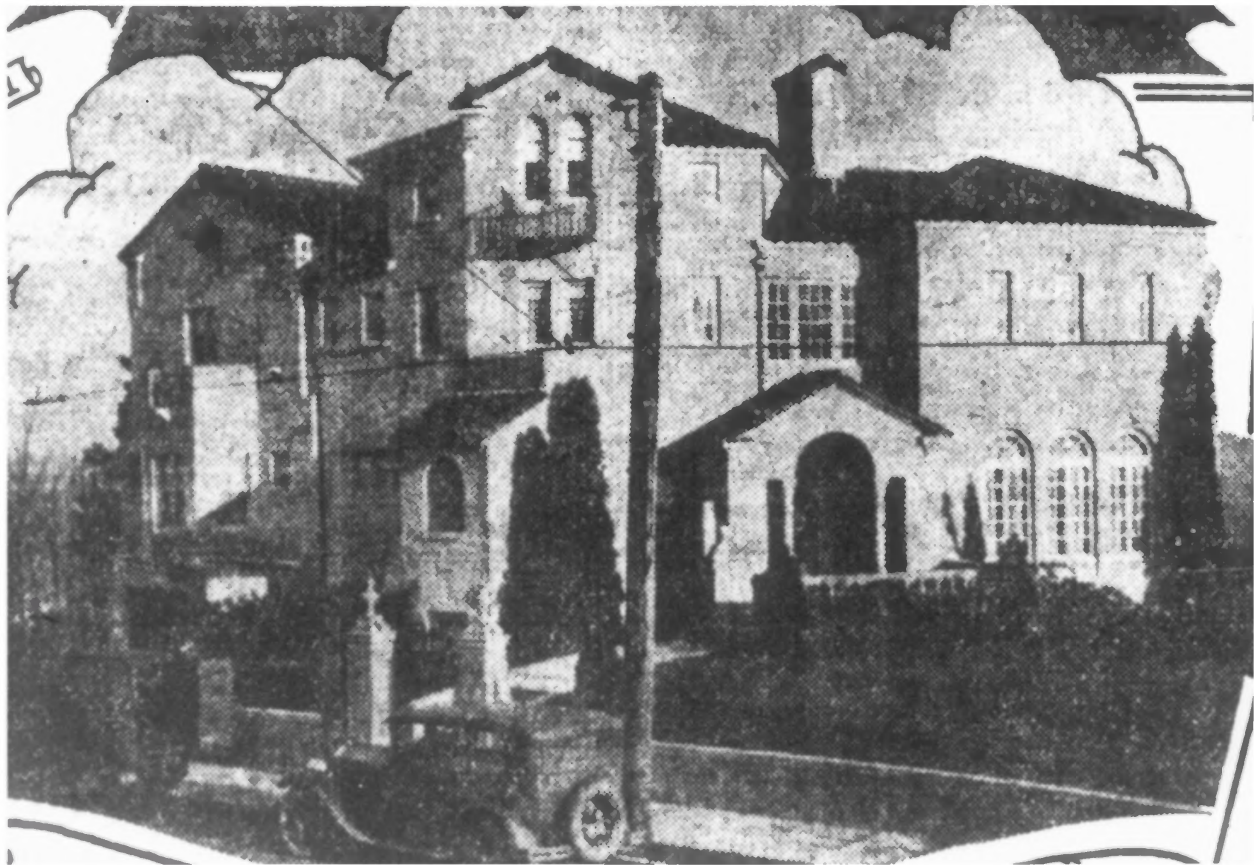
Location: 2ND FLOOR LANDING

Copy Negative:

Heritage Investment Corporation  
123 NW Second Avenue #200  
Portland, Oregon 97209

Dale Archer Photography 1990

18 of 19



This photoprint is issued by the Oregon Historical Society with the understanding that it is not to be resold or copied for resale as a photoprint nor used for "commercial" purposes such as advertising or agency stock. It may be used editorially in any one publication. Credit to

OREGON HISTORICAL SOCIETY

NEGATIVE NUMBER ORHI 85490

and to the individual photographer or artist, if named herewith. No secondary reproduction or display.

OTHO POOLE HOUSE  
PORTLAND  
MULTNOMAH CO., OR

HISTORIC VIEW

Mediterranean style home  
of Othus H. Poole on Westover Terrace  
from The Oregon Journal Jan 1, 1928

19 OF 19

see. 3, p. 11