



DISTRICT OVERVIEW  
GREAT FALLS RAILROAD HIST. DIS  
GREAT FALLS, MT.  
PAUL STEPHENS 8/92  
MHS  
FACING NE

NR #1



VIEW FROM CENTRAL AVE W. BRIDGE  
GREAT FALLS, MT.  
GREAT FALLS RAILROAD HIST. DIS  
PAUL STEPHENS 8/92  
MHS  
Facing S/E

NR # 2



2ND AVE S

GREAT FALLS RAILROAD H.S. DIS

GREAT FALLS, MT.

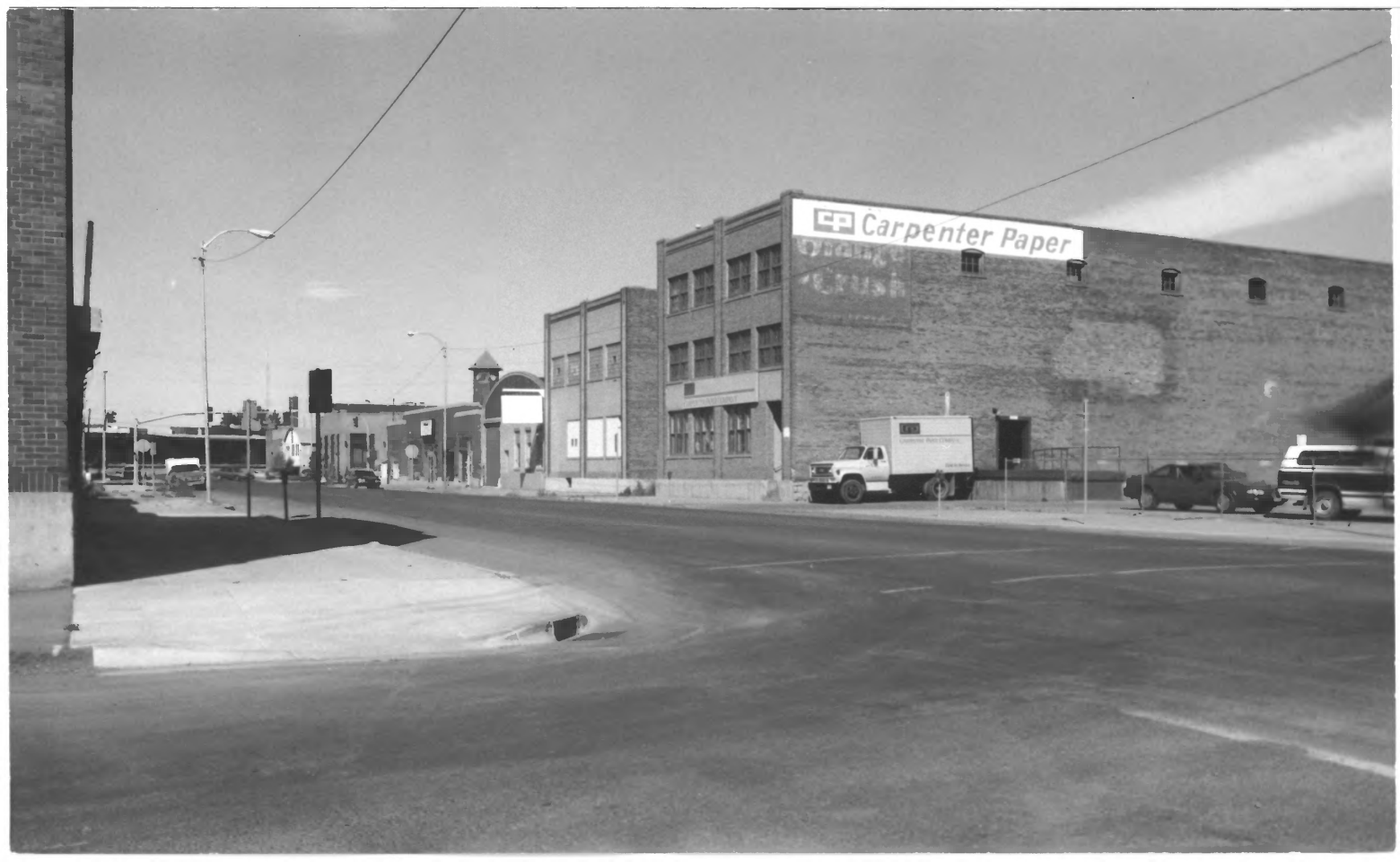
PAUL STEPHENS 8/92

MHS

FACING SW

NR #3

 *Carpenter Paper*



3RD ST. S.  
GREAT FALLS RAILROAD HIST. DIST.  
GREAT FALLS, MT.  
PAUL STEPHENS 8/92  
MHS  
FACING N/W

NR # 4





Quality  
and  
Service  
You Can  
Trust

Falls  
HOME FURNISHINGS

RYAN

Classic Style  
Electronic  
Stereos Co.

STOP

AMERICAN HERITAGE  
REALTY

NO RIGHT  
TURN  
ENTER

1<sup>ST</sup> AVE S

GREAT FALLS RAILROAD HIST DIS.  
GREAT FALLS, MT.

PAUL STEPHENS 8/92

MHS

FACING S/E

NR # 5



RIVER DR

Zellerbach

MO. 101  
87

RAILROAD OVERPASS  
GREAT FALLS RAILROAD HIST. DIST.  
GREAT FALLS, MT.  
PAUL STEPHENS 8/92  
MHS  
FACING E

NR #6



VIEW OF RR TRACKS  
GREAT FALLS RAILROAD HIST. DIS  
GREAT FALLS, MT.  
PAUL STEPHENS 5/92  
MHS  
FRACING S/E

NR # 7



GREAT NORTHERN DEPOT

2 1<sup>ST</sup> AVE. N.

GREAT FALLS, MT.

GREAT FALLS RAILROAD HIST. DIST.

PAUL STEPHENS 8/22

MHS

FACING W

NR # 8





GREAT NORTHERN FREIGHT DEPOT

102 1/2 S. PARK DR.

GREAT FALLS, MT.

GREAT FALLS RAILROAD HISTORIC DIS.

PAUL STEPHENS 8/92

MHS

102 1/2 S. PARK DR.

NR # 9



MILWAUKEE DEPOT

RIVER DR. N.

GREAT FALLS, MT.

GREAT FALLS RAILROAD HIST DIST.

PAUL STEPHENS 8/92

MHS

FACING N

NR # 10



MILWAUKEE DEPOT

RIVER DR. N.

GREAT FALLS, MT.

GREAT FALL RAILROAD HIST. DIST.

PAUL STEPHENS 8/92

MHS

FACING W

NR # 11



NORTHWEST FENCE

CARL WEISSMAN

CHICAGO, MILWAUKEE, ST. PAUL FREIGHT DEPOT  
2<sup>ND</sup> AVE. S. to 3<sup>RD</sup> ST.

GREAT FALLS, N.H.

GREAT FALLS RAILROAD HIST. DIST.

PAUL STEPHENS 8/22

N.H.S

FACING SE

NR # 12





PARKING  
TRAFFIC LIGHT

NO PA  
REVERSE

STOP  
TRAFFIC LIGHT

Zellerbach  
A Meat Company

STONE-ORDEAN WELLS CO. WAREHOUSE

1 1<sup>ST</sup> AVE. N.

GREAT FALLS, MT.

GREAT FALLS RAILROAD HIST. DIST.

PAUL STEPHENS 8/22

MHS

FACING W

NR # 13



FOR SALE  
\$280000  
BY OWNER  
CALL  
PH 463-4309

WILBUR TRANSFER CO. WAREHOUSE  
205 2<sup>ND</sup> ST. S.

GREAT FALLS, MT.

GREAT FALLS RAILROAD HIST DIS

PAUL STEPHENS 8/92

MTH

FACING S/E.

NR # 14



GREAT NORTHERN

EXPRESS BLDG

"M" CENTRAL & BURY

GREAT FALLS, MT.

GREAT FALLS RAILROAD HIST DIST.

PAUL STEPHENS 8/92

MHS

FACING N/W

NR # 15



CHEVROLET MOTOR CO. PLANT

12 1<sup>ST</sup> AVE. SO.

GREAT FALLS, MT.

GREAT FALLS RAILROAD DIST. D<sub>5</sub>

PAUL STEPHENS 8/22

MHS

FINDING S/W

NR # 16





GREAT FALLS CIVIC CENTER  
PARK DR & CENTRAL  
GREAT FALLS, MT.  
GREAT FALLS RAILROAD HIST. DIS.  
PAUL STEPHENS 8/92  
MTH3  
FACING N/W

NR # 17



WPA WALL

GREAT FALLS RAILROAD HIST. DIS.

GREAT FALLS, MT.

PAUL STEPHENS 8/92

MTHS

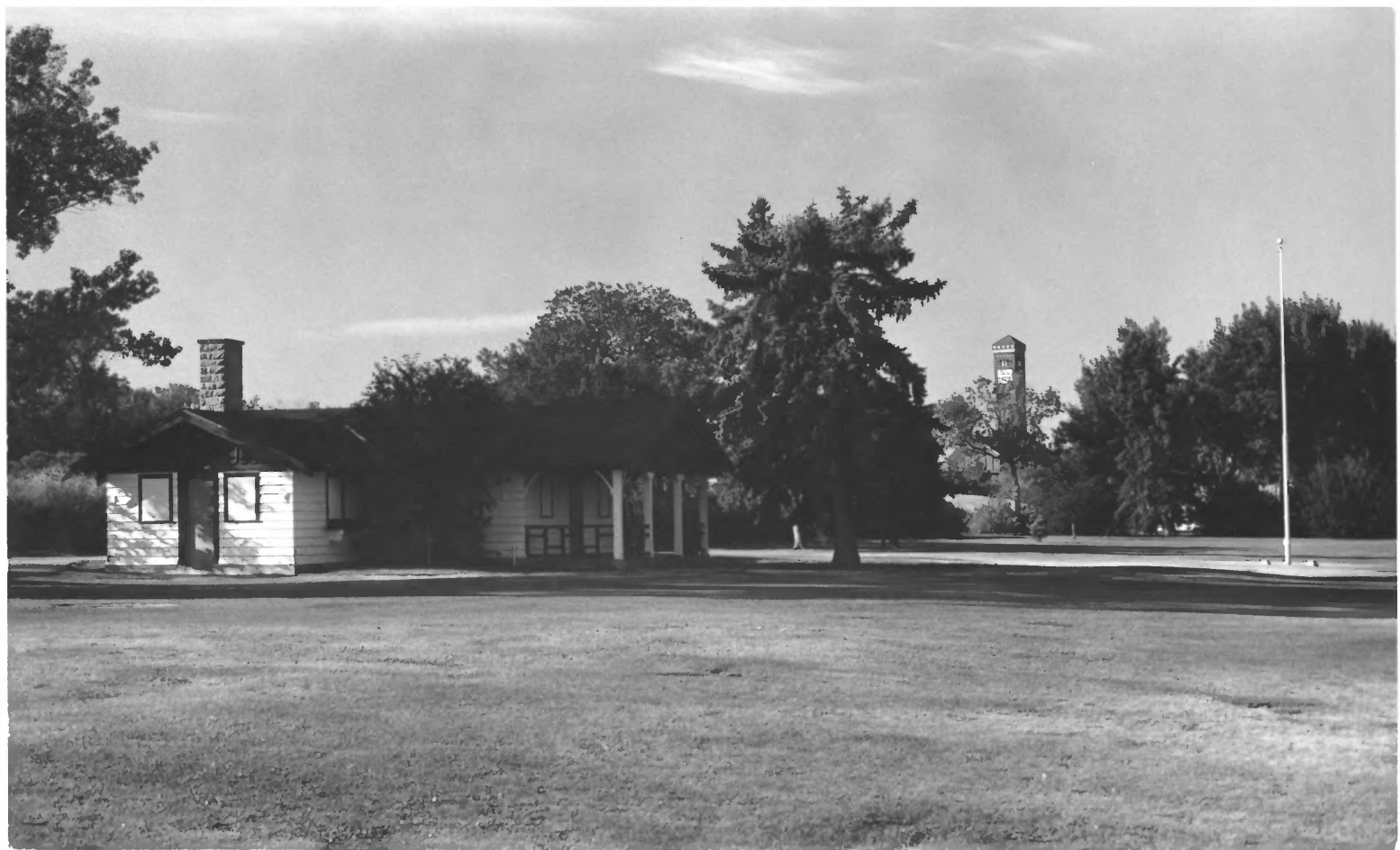
FACING S/W

NR # 18



RIVERSIDE PARK - RETAINING WALL  
GREAT FALLS, MT.  
GREAT FALLS RAILROAD HIST. DIS.  
PAUL STEPHENS 8/92  
MHS  
FACING NE

NR # 19



RIVERSIDE PARK GIRL SCOUT BLDG  
GREAT FALLS, MT.  
GREAT FALLS RAILROAD HIST. DIS.  
PAUL STEPHENS 8/92  
MHS  
FACING S/E

NR # 20





RIVERSIDE PARK-HORSESHOE PITZ  
GREAT FALLS, MT.  
GREAT FALLS RAILROAD HIST. DIS.  
PAUL STEPHENS 8/92  
MTH3  
FACING NW

NR # 21



GIBSON PARK  
PARK & RIVER DR.  
GREAT FALLS, NH.  
GREAT FALLS RAILROAD HIST. DIS.  
PAUL STEPHENS 8/92  
MHS  
FACING S

NR #22



GIBSON PARK  
PARK & RIVER DRIVES  
GREAT FALLS, MT.  
GREAT FALLS RAILROAD HIST. DIS.  
PAUL STEPHENS 5/92  
NHS  
FACING N/W

NR #23



NO PARKING

NO PARKING

NO PARKING

NO PARKING

GIBSON PARK - PARKS DEPT. BLDG

PARK AND RIVER DR.

GREAT FALLS, MT.

GREAT FALLS RAILROAD HIST DIS.

PAUL STEPHENS 8/92

MHS

FACING N/W

NR # 24





GIBSON PARK - GIBSON POND  
PARK AND RIVER DR.

GREAT FALLS, MT.

GREAT FALLS RAILROAD HIST. DIST.

PAUL STEPHENS. 8/92.

MHS.

FACING N/E

NR # 25



GIBSON PARK - McDUCKS  
PARK AND RIVER DR.  
GREAT FALLS, MA.  
GREAT FALLS RAILROAD HIST. DIS.  
PAUL STEPHENS 8/92  
MHS  
FRANCIS

NR #26



GIBSON PARK - BANDSHELL  
PARK AND RIVER DR.  
GREAT FALLS, NH.  
GREAT FALLS RAILROAD HIST. DIST.  
PAUL STEPHENS 8/92  
NHHS  
FACING W

NR # 27



GIBSON PARK - GIBSON STATUE  
PARK & RIVER DRIVES  
GREAT FALLS, MT.  
GREAT FALLS RAILROAD HIST. DIST.  
PAUL STEPHENS 8/92  
MHS  
FACING S/W

NR #28





GIBSON PARK - ROSE GARDEN  
PARK & RIVER DRIVES  
GREAT FALLS, MT.  
GREAT FALLS RAILROAD HIST. DIST.  
PAUL STEPHENS 8/92  
MHS  
FACING S/W

NR # 29