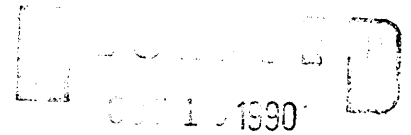


United States Department of the Interior
National Park Service



National Register of Historic Places
Registration Form

NATIONAL REGISTER

This form is for use in nominating or requesting determinations of eligibility for individual properties or districts. See instructions in *Guidelines for Completing National Register Forms* (National Register Bulletin 16). Complete each item by marking "x" in the appropriate box or by entering the requested information. If an item does not apply to the property being documented, enter "N/A" for "not applicable." For functions, styles, materials, and areas of significance, enter only the categories and subcategories listed in the instructions. For additional space use continuation sheets (Form 10-900a). Type all entries.

1. Name of Property

historic name Walker Mill Hydroelectric Station
other names/site number N/A

2. Location

street & number West Prong, Little Pigeon River at mile 2.5 N/A not for publication
city, town Sevierville vicinity
state Tennessee code TN county Sevier code 155 zip code

3. Classification

Ownership of Property	Category of Property	Number of Resources within Property	
<input checked="" type="checkbox"/> private	<input type="checkbox"/> building(s)	Contributing	Noncontributing
<input type="checkbox"/> public-local	<input checked="" type="checkbox"/> district	<u>1</u>	<u> </u> buildings
<input type="checkbox"/> public-State	<input type="checkbox"/> site	<u>1</u>	<u> </u> sites
<input type="checkbox"/> public-Federal	<input type="checkbox"/> structure	<u>2</u>	<u> </u> structures
	<input type="checkbox"/> object		<u>0</u> Total

Name of related multiple property listing: Pre-TVA Hydroelectric Development in TN, 1901-1933
Number of contributing resources previously listed in the National Register 0

4. State/Federal Agency Certification

As the designated authority under the National Historic Preservation Act of 1966, as amended, I hereby certify that this nomination request for determination of eligibility meets the documentation standards for registering properties in the National Register of Historic Places and meets the procedural and professional requirements set forth in 36 CFR Part 60. In my opinion, the property meets does not meet the National Register criteria. See continuation sheet.
Richard L. Hays Deputy State Historic Preservation Officer 10/10/90 Date
Tennessee Historical Commission
State or Federal agency and bureau

In my opinion, the property meets does not meet the National Register criteria. See continuation sheet.
Signature of commenting or other official _____ Date _____
State or Federal agency and bureau _____

5. National Park Service Certification

I, hereby, certify that this property is:
 entered in the National Register. Sharon Byers 11/20/96
 See continuation sheet.
 determined eligible for the National Register. See continuation sheet.
 determined not eligible for the National Register.
 removed from the National Register.
 other, (explain:) _____
Signature of the Keeper for Date of Action

Entered in the National Register

6. Function or Use

Historic Functions (enter categories from instructions)

INDUSTRY: energy facility

Current Functions (enter categories from instructions)

INDUSTRY: energy facility

7. Description

Architectural Classification

(enter categories from instructions)

N/A

Materials (enter categories from instructions)

foundation CONCRETE

walls CONCRETE

BRICK

roof CONCRETE

other

Describe present and historic physical appearance.

The Walker Mill Hydroelectric Station is located in Sevier County (population 41,418) on the West Prong of the Little Pigeon River at mile 2.5, and just off U.S. Highway 441. [See Appendices A and B]

The dam is a concrete gravity structure approximately 227 feet long and eleven and five-tenths (11.5) feet high. It features an uncontrolled spillway section 115 feet in length.

The steel reinforced concrete powerhouse substructure and brick powerhouse measures forty (40) feet by twenty (20) feet and is located on the dam approximately fifty (50) feet from the right abutment. One tapered concrete pillar extends from the river helping supporting the powerhouse's northwest corner. The intake is an opening in the powerhouse headwall which is controlled by two gates. The water conductor is a simple open flume.

¹Correspondence from Sevier County Historian, Mrs. Beulah D. Linn, January 18, 1989, and her unpublished typed manuscript, "Sevierville Light and Power Company," pp. 1-5, and; Tennessee Valley Authority, Office of Natural Resources, Division of Water Resources, Water Systems Development Branch, "Small Hydro Program Reconnaissance Report Walker Mill Dam," Report No. WR28-2-510-114, prepared by the Hydro Planning Section, Norris, Tennessee, May 1980.

See continuation sheet

8. Statement of Significance

Certifying official has considered the significance of this property in relation to other properties:

nationally statewide locally

Applicable National Register Criteria A B C D

Criteria Considerations (Exceptions) A B C D E F G N/A

Areas of Significance (enter categories from instructions)

COMMERCE

ENGINEERING

Period of Significance

1914 - 1933

Significant Dates

1914

Cultural Affiliation

Significant Person

N/A

Architect/Builder

N/A

State significance of property, and justify criteria, criteria considerations, and areas and periods of significance noted above.

The Walker Mill Hydroelectric Station is significant under National Register criterion C for engineering because it represents the kind of hydroelectric engineering projects typical at the time of its construction on the smaller rivers of the State of Tennessee. Its design, while not unique among its class in the Volunteer State, displays the typical vertical emphasis of what can be called "early hydro-style." It, along with another now demolished site, provided the electric needs of the town of Sevierville until 1938 when the TVA acquired the station. It is capable of operation today when the water level is high enough.

The Walker Mill Hydroelectric Station is likewise significant under National Register criterion A, as it represents a change in the business of trading, commerce, services and commodities, and the gradual introduction of electricity into everyday human existence during the early twentieth century in Tennessee.

Initial interest in a hydroelectric facility was expressed in Sevierville in 1912. On October 28, 1914, the concrete dam was finished, and by November of that year the facility began generating electricity. Local competition flourished and soon there were two hydroelectric stations on the West Prong of Pigeon Forge River, one at the Newport Milling Company site, the other at the Walker Mill site. By 1938 the TVA had purchased both sites and by 1940 sold them back to city of Sevierville which would buy its power from TVA and extend its own system to local rural areas. Only the Walker Mill site is extant and occasionally in operation when the river level is adequately high.

See continuation sheet

9. Major Bibliographical References

Previous documentation on file (NPS): N/A

- preliminary determination of individual listing (36 CFR 67) has been requested
- previously listed in the National Register
- previously determined eligible by the National Register
- designated a National Historic Landmark
- recorded by Historic American Buildings Survey # _____
- recorded by Historic American Engineering Record # _____

See continuation sheet

Primary location of additional data:

- State historic preservation office
- Other State agency
- Federal agency
- Local government
- University
- Other

Specify repository: _____

10. Geographical Data

Acreage of property less than one acre

UTM References

A

1	6
---	---

2	6	7	9	8	0
---	---	---	---	---	---

3	9	6	9	7	0	0
---	---	---	---	---	---	---

Zone Easting Northing

B

--	--

--	--	--	--

--	--	--	--	--	--

Zone Easting Northing

C

--	--

--	--	--	--

--	--	--	--	--	--

D

--	--

--	--	--	--

--	--	--	--	--	--

Pigeon Forge, TN 156 SE

See continuation sheet

Verbal Boundary Description

The boundaries of the Walker Mill Hydroelectric Station include the dam, power house, and secondary elements. See accompanying map.

See continuation sheet

Boundary Justification

The boundaries for the Walker Mill Hydroelectric Station are sufficient to protect the historical integrity of the dam and powerhouse.

See continuation sheet

11. Form Prepared By

name/title Dr. James B. Jones, Jr., Historic Preservation Specialist
organization Tennessee Historical Commission date September 1990
street & number 701 Broadway telephone (615) 742-6718
city or town Nashville state Tennessee zip code 37243-0442

**United States Department of the Interior
National Park Service**

National Register of Historic Places Continuation Sheet

Section number 3 Page 2

Walker Mill Hydroelectric Station

PROPERTY OWNER:

Mr. G. H. Conner
114 Court Ave.
Sevierville, TN 37862

United States Department of the Interior
National Park Service

**National Register of Historic Places
Continuation Sheet**

Section number 9 Page 2 Walker Mill Hydroelectric Station

BIBLIOGRAPHY:

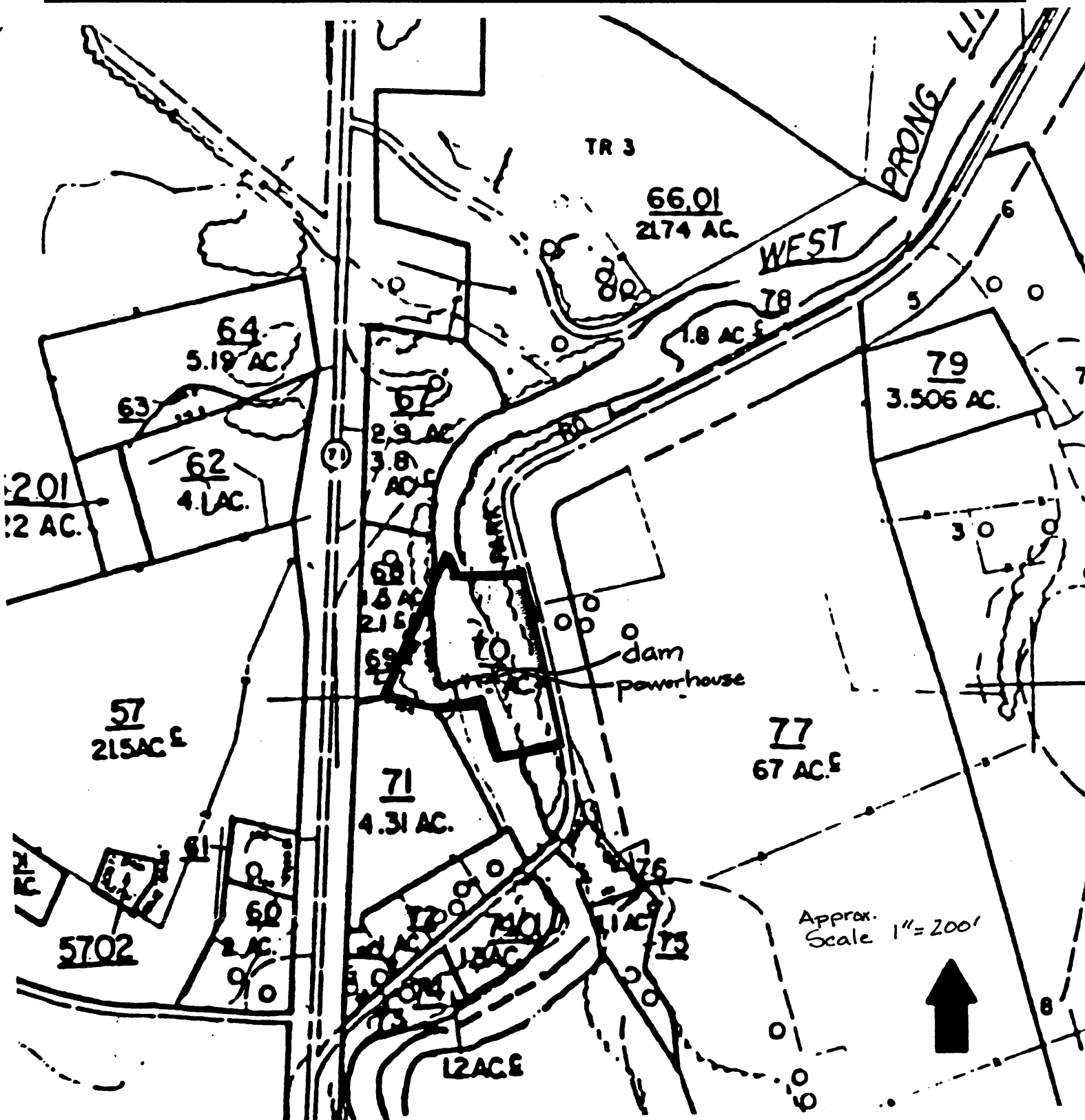
- Linn, Mrs. Beulah D., Sevier County Historian. Letter to James B. Jones, Jr., Tennessee Historical Commission. January 18, 1989.
- Linn, Mrs. Beulah D. "Sevierville Light and Power Company," Typed manuscript. 1989.
- Tennessee Valley Authority, Office of Natural Resources, Division of Water Resources, Water Systems Development Branch. "Small Hydro Program Reconnaissance Report Walker Mill Dam," Report No. WR28-2-510-114, prepared by the Hydro Planning Section, Norris, Tennessee, May 1980.

United States Department of the Interior
National Park Service

National Register of Historic Places Continuation Sheet

Section number 10 Page 2

Walker Mill Hydroelectric Station



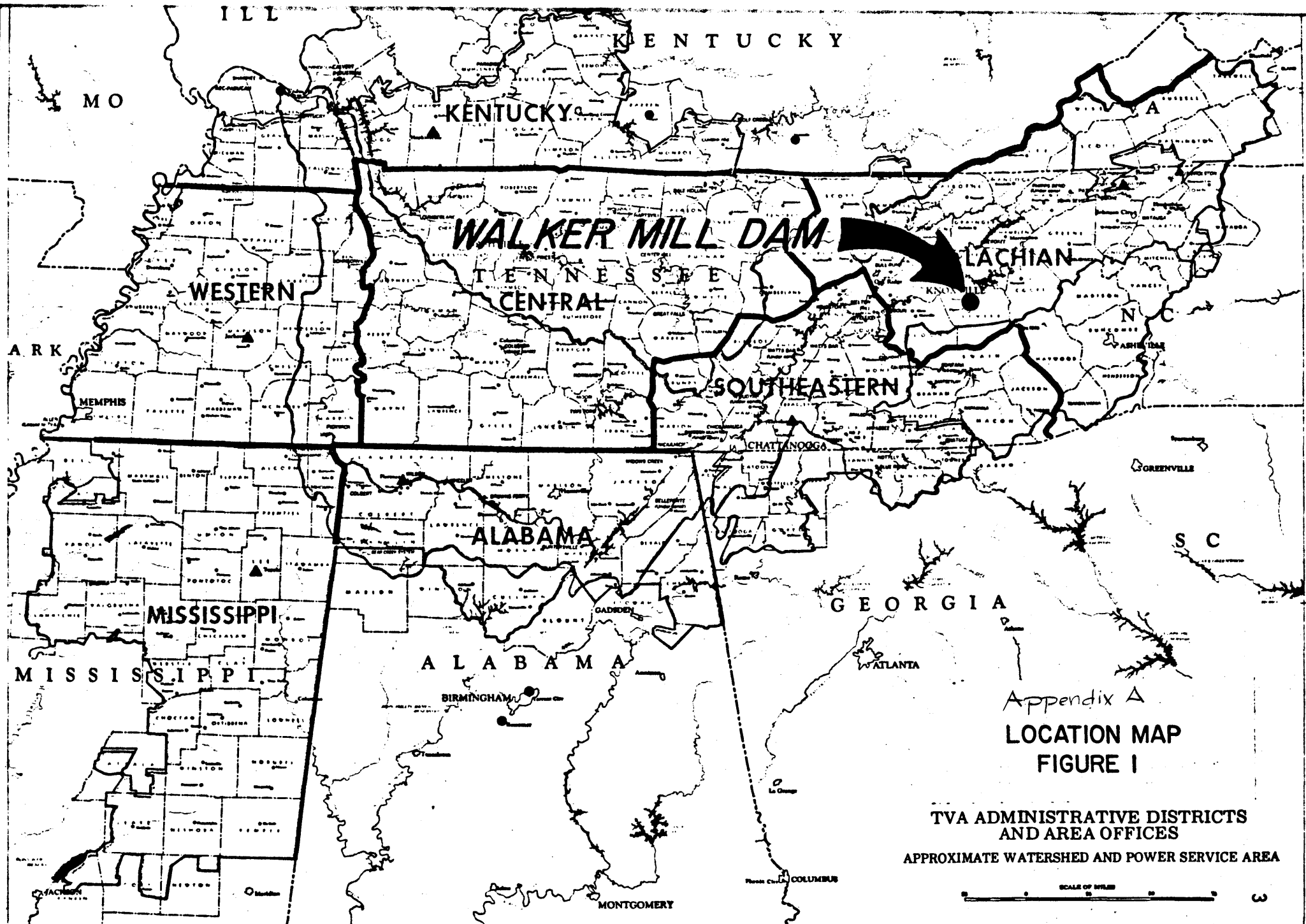
United States Department of the Interior
National Park Service

**National Register of Historic Places
Continuation Sheet**

Section number Photos Page 1 Walker Mill Hydroelectric Station

Walker Mill Hydroelectric Station
West Prong of the Little Pigeon River at mile 2.5
Sevierville vicinity, Sevier County, Tennessee
Photos By: Gail Guymon
Date: June 1990
Neg: Tennessee Historical Commission
701 Broadway
Nashville, TN

- #1 of 7 Dam, looking south
- #2 of 7 Dam and Power House, looking east
- #3 of 7 Dam and Power House, looking southeast
- #4 of 7 Power House, looking north
- #5 of 7 Power House, south elevation
- #6 of 7 Power House, east and north elevation
- #7 of 7 Power House, north elevation



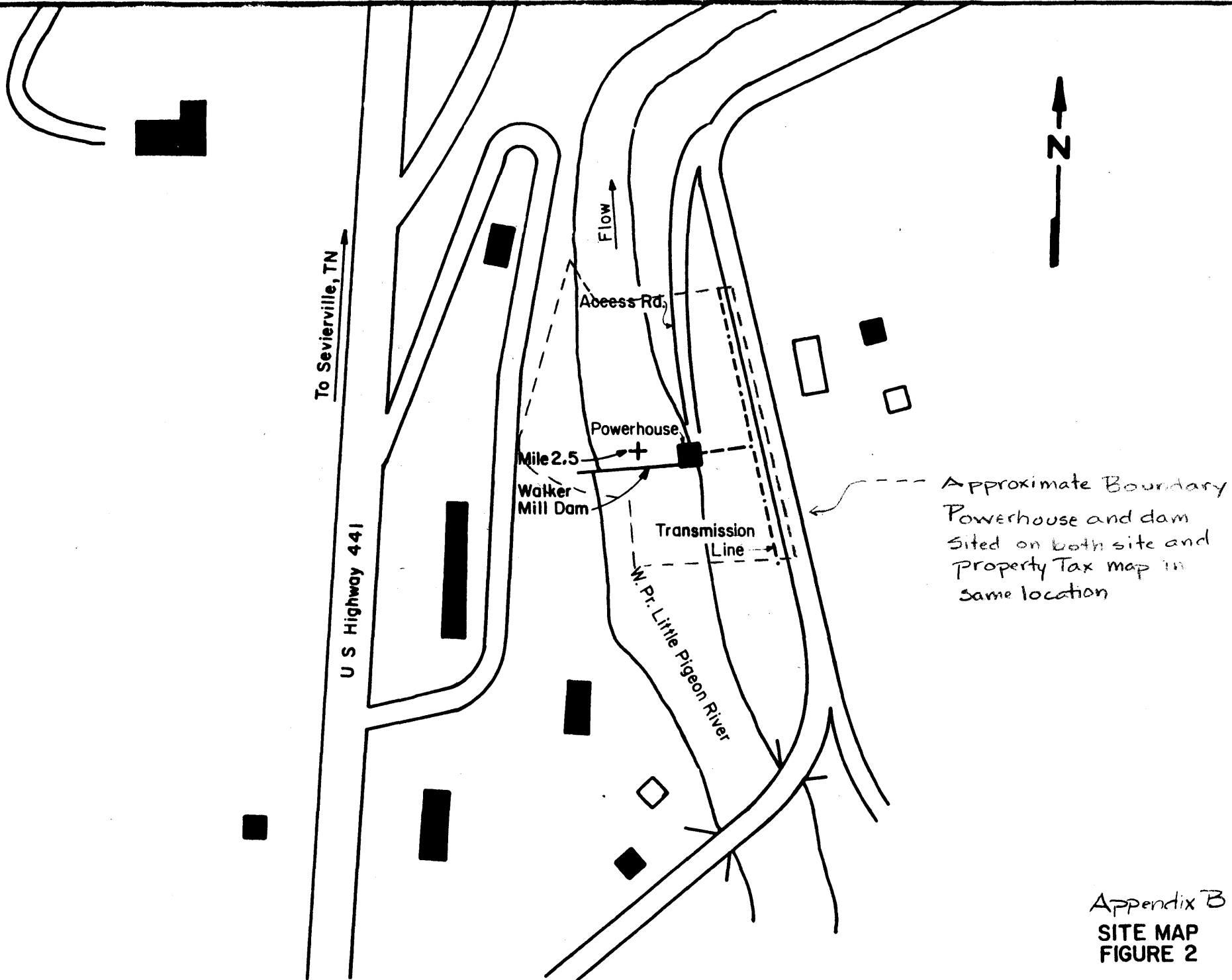
WALKER MILL DAM

CHATTANOOGA

Appendix A
LOCATION MAP
FIGURE I

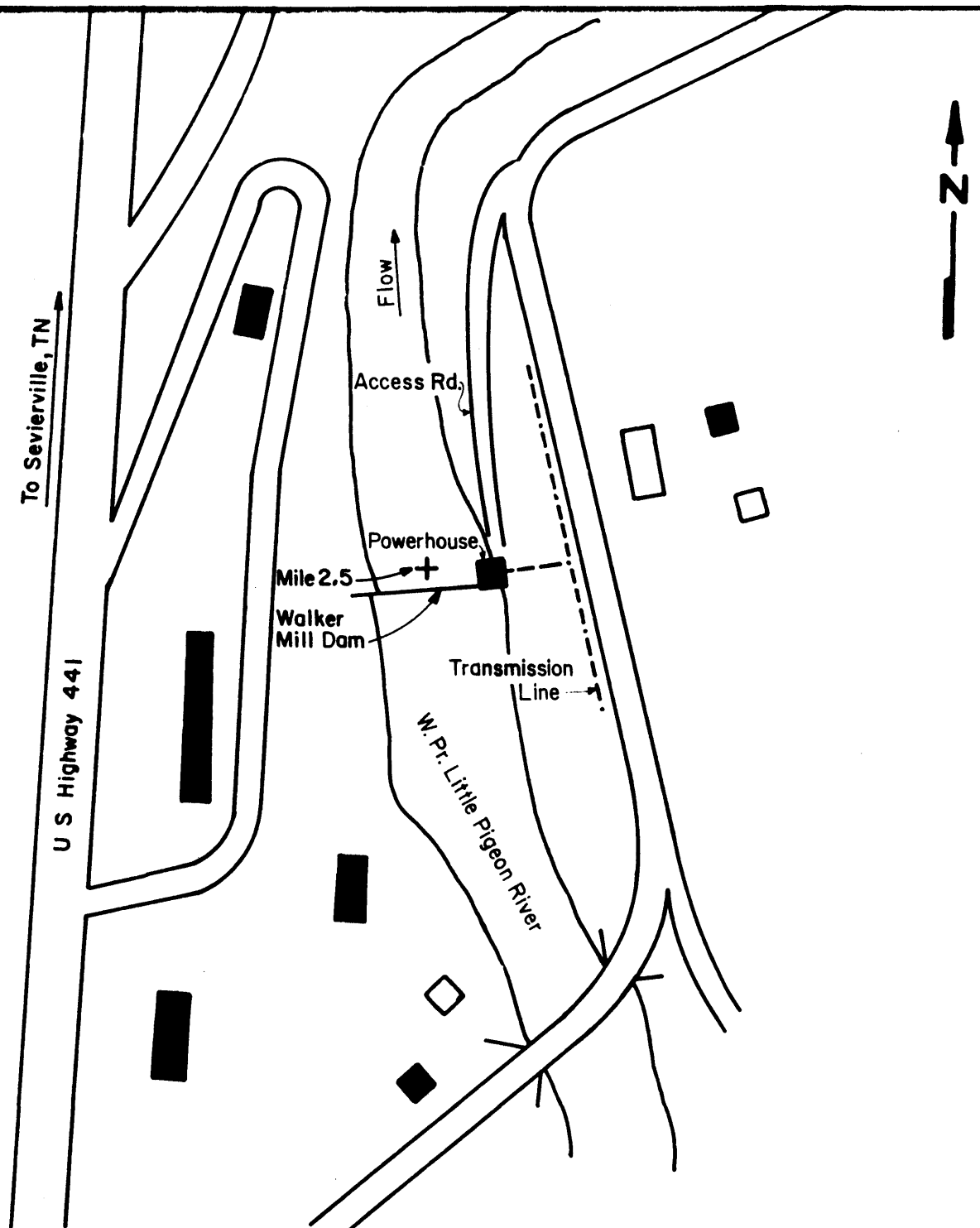
TVA ADMINISTRATIVE DISTRICTS
AND AREA OFFICES
APPROXIMATE WATERSHED AND POWER SERVICE AREA





Approximate Boundary
Powerhouse and dam
sited on both site and
Property Tax map in
same location

Appendix B
SITE MAP
FIGURE 2



Appendix B
SITE MAP
FIGURE 2