

United States Department of the Interior
National Park Service

NATIONAL REGISTER OF HISTORIC PLACES
REGISTRATION FORM

RECEIVED

134

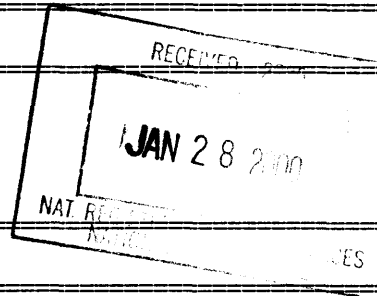
AUG 14 1998

Ala. Historical Commission

1. Name of Property

Historic Name: Newman, E. L., Lustron House

Other Names/Site Number: Newman, E. L., House



2. Location

Street & Number: 1406 34th Street Not for Publication: N/A

City or Town: Sheffield Vicinity: N/A

State: Alabama Code: AL County: Colbert Code: 033

Zip Code: 35660

3. State/Federal Agency Certification

As the designated authority under the National Historic Preservation Act of 1986, as amended, I hereby certify that this X nomination request for determination of eligibility meets the documentation standards for registering properties in the National Register of Historic Places and meets the procedural and professional requirements set forth in 36 CFR Part 60. In my opinion, the property X meets does not meet the National Register Criteria. I recommend that this property be considered significant nationally statewide X locally. (See continuation sheet for additional comments.)

[Signature] Alabama Historical Commission
Signature of certifying official (State Historic Preservation Office) 1/20/00
State or Federal agency and bureau Date

In my opinion, the property meets does not meet the National Register criteria. (See continuation sheet for additional comments.)

 Signature of commenting or other official State or Federal agency and bureau Date

4. National Park Service Certification

I, hereby certify that this property is:

- entered in the National Register See continuation sheet.
- determined eligible for the National Register See continuation sheet.
- determined not eligible for the National Register
- removed from the National Register
- other (explain):

[Signature] 2/24/00
Signature of Keeper Date of Action

E.L. Newman Lustron House
Name of Property

Colbert County, Alabama
County and State

5. Classification

Ownership of Property (Check as many boxes as apply)

- private
- public-local
- public-State
- public-Federal

Category of Property (Check only one box)

- building(s)
- district
- site
- structure
- object

Number of Resources within Property

Contributing	Noncontributing	
<u>1</u>	<u>1</u>	buildings
<u>0</u>	<u>0</u>	sites
<u>0</u>	<u>0</u>	structures
<u>0</u>	<u>0</u>	objects
<u>1</u>	<u>1</u>	Total

Number of contributing resources previously listed in the National Register N/A

Name of related multiple property listing (Enter "N/A" if property is not part of a multiple property listing.):

Lustron Houses In Alabama

6. Function or Use

Historic Functions (Enter categories from instructions)

Category:
DOMESTIC

Subcategory:
Single Dwelling

Current Functions (Enter categories from instructions)

Category:
DOMESTIC

Subcategory:
Single Dwelling

7. Description

Architectural Classification (Enter categories from instructions)

Other: Lustron House

Materials (Enter categories from instructions)

foundation Concrete
roof Metal: Steel
walls Metal: Steel
other Metal: Steel, Glass

Narrative Description (Describe the historic and current condition of the property on one or more continuation sheets.)

(See Continuation Sheet Section 7 Page 1)

8. Statement of Significance

Applicable National Register Criteria (Mark "x" in one or more boxes for the criteria qualifying the property for National Register listing)

- A Property is associated with events that have made a significant contribution to the broad patterns of our history.
- B Property is associated with the lives of persons significant in our past.
- C Property embodies the distinctive characteristics of a type, period, or method of construction or represents the work of a master, or possesses high artistic values, or represents a significant and distinguishable entity whose components lack individual distinction.
- D Property has yielded, or is likely to yield information important in prehistory or history.

Criteria Considerations (Mark "X" in all the boxes that apply.) N/A

- A owned by a religious institution or used for religious purposes.
- B removed from its original location.
- C a birthplace or a grave.
- D a cemetery.
- E a reconstructed building, object, or structure.
- F a commemorative property.
- G less than 50 years of age or achieved significance within the past 50 years.

Areas of Significance (Enter categories from instructions)

Architecture
Engineering

Period of Significance

1949

Significant Dates

1949

Significant Person (Complete if Criterion B is marked above): N/A

Cultural Affiliation: N/A

Architect/Builder:

Koch, Carl and Associates (Architect)

Lustron Corporation (Builder)

Narrative Statement of Significance (Explain the significance of the property on one or more continuation sheets.)

(See Continuation Sheet Section 8 Page 3)

E.L. Newman Lustron House
Name of Property

Colbert County, Alabama
County and State

9. Major Bibliographical References

(Cite the books, articles, and other sources used in preparing this form on one or more continuation sheets.)

Previous documentation on file (NPS) N/A

- preliminary determination of individual listing (36 CFR 67) has been requested.
- previously listed in the National Register
- previously determined eligible by the National Register
- designated a National Historic Landmark
- recorded by Historic American Buildings Survey # _____
- recorded by Historic American Engineering Record # _____

Primary Location of Additional Data

- State Historic Preservation Office
- Other State agency
- Federal agency
- Local government
- University
- Other

Name of repository: _____

10. Geographical Data

Acreage of Property: less than one acre

UTM References (Place additional UTM references on a continuation sheet)

Zone	Easting	Northing	Zone	Easting	Northing
116	437740	38476003	_____	_____	_____
2	_____	_____	4	_____	_____

____ See continuation sheet.

Verbal Boundary Description (Describe the boundaries of the property on a continuation sheet.)

Boundary Justification (Explain why the boundaries were selected on a continuation sheet.)

11. Form Prepared By

Name/Title: Gene A. Ford, Architectural Historian; Susan Enzweiler, AHC Historian; Trina Binkley, AHC Reviewer

Organization: The University of Alabama, Office of Archaeological Services Date: September 9, 1997

Street & Number: 13075 Moundville Archaeological Park Telephone: (205) 348-7774

City or Town: Moundville State: Alabama Zip Code: 35474

E.L. Newman Lustron House
Name of Property

Colbert County, Alabama
County and State

Additional Documentation

Submit the following items with the completed form:

Continuation Sheets

Maps

A USGS map (7.5 or 15 minute series) indicating the property's location.

A sketch map for historic districts and properties having large acreage or numerous resources.

Photographs

Representative black and white photographs of the property.

Additional items (Check with the SHPO or FPO for any additional items)

Property Owner

(Complete this item at the request of the SHPO or FPO.)

Name: Mr. Edward L. Newman

Street & Number: 1406 34th Street Telephone:

City or Town: Sheffield State: Alabama Zip Code: 35660

United States Department of the Interior
National Park Service

NATIONAL REGISTER OF HISTORIC PLACES
CONTINUATION SHEET

Section 7 Page 1

E. L. Newman Lustron House
Name of Property

Colbert County, Alabama
County and State

=====

The E. L. Newman Lustron House, located in Sheffield, Colbert County, Alabama, is a one story, metal, prefabricated house. Built in 1949, the E. L. Newman House features a metal side gable roof. Exterior siding consists of 2 ft. square porcelain enamelled metal panels. Two aluminum frame windows, which coincide with a bedroom and the living room, respectively, punctuate the front facade of the house. A portion of the front facade and adjoining side wall are inset forming a porch with an engaged roof. A single metal post supports the roof on the porch. There is a downspout attached to the porch support. A metal and glass panel door and an aluminum frame window pierce the southwest side of the all metal house. Fenestration on the rear facade includes three aluminum frame windows and a metal and glass panel door. Attached to the rear of the Lustron is an enclosed glass and metal porch. Four small aluminum frame windows punctuate the northeast side of the prefabricated home. The home rests on a concrete block foundation. Inside, the Lustron features metal wall and ceiling panels and built in cabinets, shelves, and a vanity. The E. L. Newman Lustron House, a fine example of the two bedroom Westchester model (one of nine in Alabama), retains a high degree of integrity and is in excellent condition.

The E. L. Newman Lustron House is situated on a 60 ft x 150 ft lot in a post World War II subdivision of Sheffield, Alabama. The all metal prefab is surrounded by numerous wood frame minimal traditional cottages. The Westchester model measures 31 ft x 35 ft and resembles the quintessential ranch house with its low profile, side gable roof, and sleek rectangular configuration. One must make a double take to realize that this prefabricated house is slightly different than its neighbors. A scattering of foliage embellishes the associated yard. A small 1950s era garage (noncontributing resource) is situated near the rear of the lot.

A side gable roof of metal panels crowns the Lustron House. The panels are fashioned to imitate the look of ceramic tiles. Painted brown, the porcelain enamelled metal panels are bolted to metal roof trusses. Vertical metal panels cover the gable ends. Attached to the roof and extending along the entire front facade is a metal gutter. Two downspouts, one at either end of the front facade, conduct rain water from the gutter to the ground below. The southeast corner downspout is not a Lustron stock item; rather it is an addition to the house.

The exterior skin of the E. L. Newman House consists of porcelain enamelled panels. Painted a permanent tan, the panels measure 2 ft square. The tan finish of the exterior is factory produced and represents one of the seven basic stock colors of the Lustron palette. The exterior of the E. L. Newman House does not show any signs of rust, fading, or other deleterious effects from the elements.

Two windows constitute the fenestration of the front facade. Measuring 6 ft x 8 ft, these windows feature a large, fixed, central, plate glass window flanked on either side by a four-light casement window. The frames are constructed of aluminum. The west most of the two slightly projects beyond the wall much like a bay window.

The southwest corner of the Lustron House is recessed, creating a 12 ft x 5 ft inset porch. Supporting the end of the engaged roof over the porch is a metal post to which the factory issue downspout is attached. A metal and glass panel door is located at the northeast corner of the porch; the door leads to the living room.

United States Department of the Interior
National Park Service

NATIONAL REGISTER OF HISTORIC PLACES
CONTINUATION SHEET

Section 7 Page 2

E. L. Newman Lustron House
Name of Property

Colbert County, Alabama
County and State

A window opening is cut into the southwest wall of the prefabricated house. It is fitted with a window similar in design to those of the front facade. The window coincides with the dining room.

Fenestration on the rear facade of the Lustron House consists of four openings. The kitchen window opening measures 4 ft square and is fitted with a six light casement window. A doorway is fitted with a metal and glass panel door similar in design to that of the front door. The door leads to the utility room and kitchen. A 4 ft x 2 ft, three light casement serves as the bathroom window. The bedroom window is like those of the front facade. Extending across the entire 31 ft length of the rear facade is an enclosed porch, which was constructed circa 1960. Featured elements of the porch are a standing seam metal roof and walls constructed of glass and metal panels. A concrete slab serves as the floor of the structure. While decidedly not a stock Lustron item, the porch does not detract from the character of the historic prefab. Its massing, scale, and design harmonize with its parent edifice.

Four rectangular windows pierce the northeast wall of the Newman House. Constructed of a single light, these windows resemble those of the east wall of the Doit W. McClellan Lustron House in Jackson, Alabama and the north wall of the J. P. McKee Lustron House also in Jackson, Alabama, suggesting that they are an alternate Lustron window design.

The interior of the E. L. Newman House appears much as it did when it was erected in 1949. The ceiling and wall panels have not been covered or replaced with sheetrock, wood paneling, or other nonoriginal material. Emitting from the porcelain enamelized panels is a lustrous sheen that glows as much as the day the panels were removed from the Lustron Corporation plant ovens in Columbus, Ohio. Throughout the interior, there is indoor/outdoor, mohair, or tight and short napped carpet. While the carpet is not a Lustron stock material, it is a minor concession with respects to the original look of the all metal house.

Intact in the interior of the house is an array of built in creature comforts. The living room features a built in book shelf and a complimentary cabinet. The wall divider between the dining room and kitchen has space saving metal cabinets, drawers, and shelves. Metal cabinets line the walls of the kitchen. The original furnace located in the utility room gave out a number of years ago; it has been replaced with a contemporary heating unit. The master bedroom retains its built in vanity and closets. Metal closets are also featured in the second bedroom.

Archaeological Component

Although no formal archaeological survey has been conducted, there is the potential for subsurface remains.

United States Department of the Interior
National Park Service

NATIONAL REGISTER OF HISTORIC PLACES
CONTINUATION SHEET

Section 8 Page 3

E. L. Newman Lustron House
Name of Property

Colbert County, Alabama
County and State

Significance

The E. L. Newman Lustron House meets the standards established by Criterion C for listing in the National Register of Historic Places and falls under the "Lustron Houses in Alabama" MPS. The Lustron House is significant in the areas of architecture and engineering for its associations with the prefabricated housing industry and nation wide housing shortage immediately following World War II. The E. L. Newman Lustron House rates as an outstanding example of the component part technology and all steel construction that the Lustron Corporation utilized in the manufacture of its prefabricated houses from 1946 to 1950. The prefabricated house is the sum total of a critically acclaimed engineering process that included a state of the art factory, production line, storage and distribution system, and marketing strategy. Additionally, the Lustron House embodies the distinct characteristics of post World War II architecture, such as an overall design that was at once contemporary and historic, durability, easy maintenance, and built in creature comforts. It is historically linked with Southern Sash, the dealer of Lustron Houses in northern Alabama and southern Tennessee, which played a critical role in sales and dissemination of information. As one of only eleven extant Lustrons in the state of Alabama, the E. L. Newman House is part of a small yet significant group of houses that represent the development of prefabricated housing in the state. As Lustron promotional information boasted, the E. L. Newman House has retained a high degree of its original appearance through its history and is likely to do so for the next half century as well.

Historical Summary

In terms of its individual history, the E. L. Newman House is one of two unique Lustron Houses in Alabama. The prefabricated house is owned and occupied by its original owner. The other such Lustron, the Basil Luff Lustron House in Sheffield, is not a candidate for the National Register as its interior has been adulterated by the addition of sheetrock to the walls of the rooms; removal of built in metal cabinets, drawers, and shelves; and replacement of said stock Lustron furnishings with wood cabinets and the like.

Additionally, the E. L. Newman House is one of five extant Lustron Houses in the Muscle Shoals area of Alabama, which encompasses Florence, Sheffield, Tuscumbia, and Muscle Shoals. The house was one of a number of Lustrons marketed by Southern Sash. Southern Sash, located in Sheffield, owned the Lustron distribution rights for northern Alabama and southern Tennessee (Darby 1997). Incidentally, Southern Sash's parent company, the Union Aluminum Company in Sheffield, which like Sash was headed by William S. (Pete) King and Elton H. Darby, manufactured the aluminum frame windows used by the Lustron Corporation in its prefabricated houses (Eckl 1948).

More significantly, the E. L. Newman House served as the model home for the Muscle Shoals area, according to Mr. E. L. Newman (Personal Interview 1996). Mr. Newman recalls a number of radio advertisements promoting the sales of Lustrons in the area as well as the grand opening of the model home. He remembers a plane flying around the area with a banner that advertised Lustron Houses. He was present the day the specially designed truck from the Lustron Corporation unloaded his metal prefab and witnessed its construction.

United States Department of the Interior
National Park Service

NATIONAL REGISTER OF HISTORIC PLACES
CONTINUATION SHEET

Sections 8.9,10 Page 4

E. L. Newman Lustron House
Name of Property

Colbert County, Alabama
County and State

Mr. Newman and his wife (deceased) raised a family in the house. Mr. Newman indicated that his wife was initially hesitant about living in an all metal house, but came to like it as time progressed. He stated that he had no regrets about the metal prefab.

The Newmans made only two modifications to their Lustron House. In the 1960s, they added a rear porch to the house. The porch addition does not compromise the historic character of the house. Additionally, they replaced the heating unit in the 1960s.

Bibliography

Eckl, Lois A. "The Story of Our Industry." *Tri-Cities Daily*: pp. 1-2. Muscle Shoals. August 24, 1948.

Newman, E. H., Jr. Personal Interview. December 27, 1996.

Verbal Boundary Description

The boundary of the E. L. Newman Lustron House is demarcated in Figure 2, which is derived from Colbert County Tax Map #20-07-08-27-2.

Boundary Justification

The delineated boundaries include the house and lot historically associated with the Lustron House located at 1406 34th Street, Sheffield, Alabama.

United States Department of the Interior
National Park Service

NATIONAL REGISTER OF HISTORIC PLACES
CONTINUATION SHEET

Section Photographs Page 5

E. L. Newman Lustron House
Name of Property

Colbert County, Alabama
County and State

Photographs

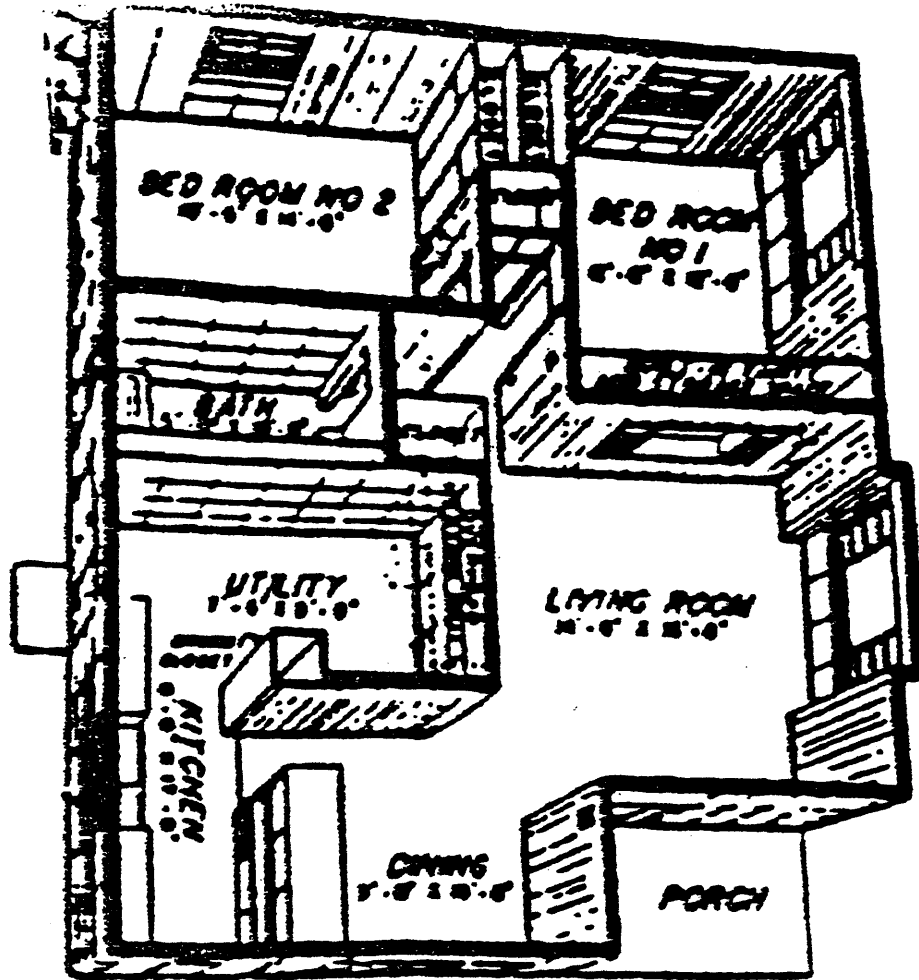
E. L. Newman Lustron House
Sheffield, Colbert County, Alabama

Photos By: Gene A. Ford
Office of Archaeological Services
Moundville, Alabama 35474

Negatives: Alabama Historical Commission
468 South Perry Street
Montgomery, Alabama 36130-0900

Date: December 26, 1996

1. Front and Northeast Elevations.
2. Southwest and Front Elevations.
3. Rear Elevation.
4. Detail of Porch and Rear Facade.
5. Detail of Dining Room and Kitchen.



Floor plan,
Westchester two-bedroom
model.

Figure 1.

E. L. NEWMAN LUSTRON HOUSE, COLBERT COUNTY, ALABAMA