



1. Contributing Residence
2. 802 Lexington St., South Lake Morton Dist., Lakeland (Polk County), Florida.
3. James H. Edwards.
4. 1984
5. Dept. of Planning & Comm. Development, City Hall/Lakeland, Florida.
6. South (entrance) facade.
7. Photo 1 of *18*



1. Contributing Residence
2. 1022 S. Success St., South Lake Morton Dist.  
Lakeland (Polk County), Florida.
3. James H. Edwards
4. 1984
5. Dept. of Planning & Comm. Development,  
City Hall/Lakeland, Florida.
6. West (entrance) & South facades.
7. Photo 2 of *18*





1. Contributing Residence
2. 929 S. Tennessee Ave., South Lake Morton District, Lakeland (Polk County), Florida.
3. James H. Edwards.
4. 1984
5. Dept. of Planning & Community Development, City Hall/Lakeland, Florida.
6. East (entrance) facade.
7. Photo 3 of 18

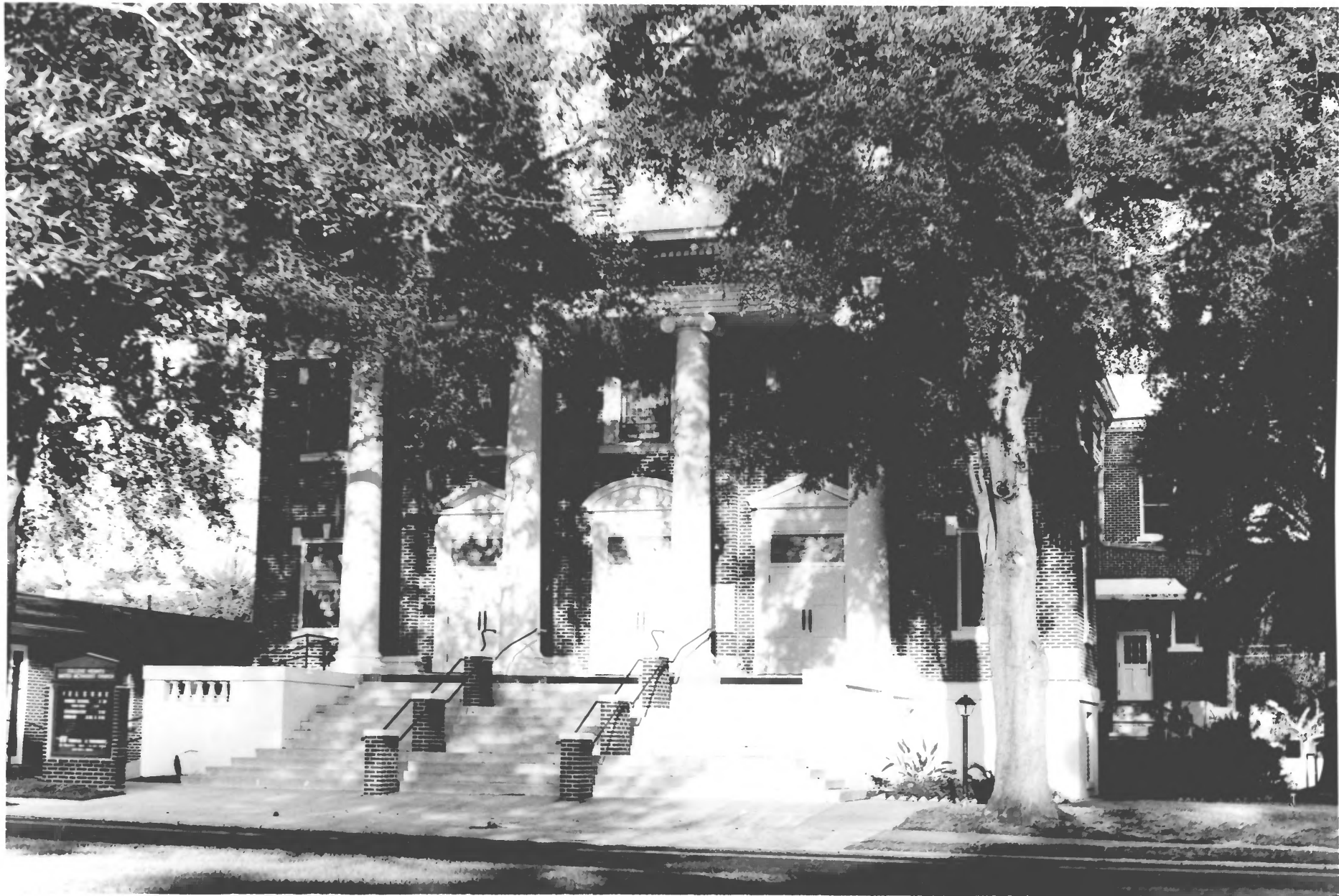


1. Contributing Residence
2. 826 S. Success Ave., South Lake Morton District, Lakeland (Polk County), Florida.
3. James H. Edwards.
4. 1984
5. Dept. of Planning & Comm. Development, City Hall/Lakeland, Florida.
6. West (entrance) and South facades.
7. Photo 4 of *18*.





1. Contributing Residence
2. 945 S. Pennsylvania Ave., South Lake Morton District, Lakeland (Polk County), Florida.
3. James H. Edwards.
4. 1984
5. Dept. of Planning & Comm. Development, City Hall/Lakeland, Florida.
6. East (entrance) facade.
7. Photo 5 of *18*



1. Contributing Church Building
2. 930 S. Boulevard, South Lake Morton Dist.,  
Lakeland (Polk County), Florida.
3. James H. Edwards
4. 1984
5. Dept. of Planning & Comm. Development,  
City Hall/Lakeland, Florida.
6. West (entrance) facade.
7. Photo 6 of *18*





1. Typical Street Scene (Bungalows)
2. 900 Block, S. Tennessee Ave., South Lake Morton Dist., Lakeland (Polk Cnty.), Fla.
3. James H. Edwards.
4. 1984
5. Dept. of Planning & Comm. Development, City Hall/Lakeland, Florida.
6. West Side of Block.
7. Photo *7* of *18*





1. Typical Street Scene (Bungalows)
2. 800 Block, Cumberland St., South Lake Morton District, Lakeland (Polk County), Florida.
3. James H. Edwards.
4. 1984
5. Dept. of Planning & Comm. Development, City Hall/Lakeland, Florida.
6. South Side of Block.
7. Photo 8 of 18





1. View Across Lake Morton to District
2. Lake Morton Drive, South Lake Morton  
District, Lakeland (Polk County), Florida.
3. James H. Edwards.
4. 1984
5. Dept. of Planning & Comm. Development,  
City Hall/Lakeland, Florida.
6. Southwest to Northern Boundary of District
7. Photo *9* of *18*



1. Contributing Residence
2. 817 South Boulevard, South Lake Morton District, Lakeland (Polk County), Florida.
3. James H. Edwards.
4. 1985
5. Dept. of Planning & Comm. Development, City Hall/Lakeland, Florida.
6. East (entrance) facade.
7. Photo *10* of *18* *(see entry)*.





1. Contributing Residence
2. 121 E. Mosswood, South Lake Morton  
District, Lakeland (Polk County), Florida
3. James H. Edwards.
4. 1985
5. Dept. of Planning & Comm. Development,  
City Hall/Lakeland, Florida.
6. Northeast (entrance) facade.
7. Photo // of /8



1. Contributing Residence
2. 734 S. Mississippi Ave., South Lake Morton District, Lakeland (Polk County), Florida.
3. James H. Edwards.
4. 1985
5. Dept. of Planning & Comm. Development, City Hall/Lakeland, Florida.
6. West (entrance) facade.
7. Photo *12*.of *18*





1. Contributing Residence
2. 824 S. Mississippi Ave., South Lake Morton District, Lakeland (Polk County), Florida.
3. James H. Edwards.
4. 1985
5. Dept. of Planning & Comm. Development, City Hall/Lakeland, Florida.
6. West (entrance) facade.
7. Photo *13* of *18*



1. Contributing Residence
2. 1222 Lake Hollingsworth Dr., South Lake Morton District, Lakeland (Polk County), Florida.
3. James H. Edwards.
4. 1985
5. Dept. of Planning & Comm. Development, City Hall/Lakeland, Florida.
6. Northwest (entrance) facade.
7. Photo *14* of *18*





1. Contributing Residence
2. 1042 South Boulevard, South Lake Morton District, Lakeland (Polk County), Florida.
3. James H. Edwards.
4. 1985
5. Dept. of Planning & Comm. Development, City Hall/Lakeland, Florida.
6. South facade.
7. Photo *15* of *18*





1. Contributing Residence
2. 802 S. Orange Park, South Lake Morton  
District, Lakeland (Polk County),  
Florida.
3. James H. Edwards.
4. 1985
5. Dept. of Planning & Comm. Development,  
City Hall/Lakeland, Florida.
6. West & South facades.
7. Photo 16 of 18 (Inventory).





1. Contributing Residence
2. 937 S. Success Ave., South Lake Morton District, Lakeland (Polk County), Florida.
3. James H. Edwards.
4. 1985
5. Dept. of Planning & Comm. Development, City Hall/Lakeland, Florida.
6. East (entrance) facade.
7. Photo 17 of 18 .



1. Contributing Residence
2. 417 E. McDonald St., South Lake Morton District, Lakeland (Polk County), Florida.
3. James H. Edwards.
4. 1985
5. Dept. of Planning & Comm. Development, City Hall/Lakeland, Florida.
6. East facade.
7. Photo 18 of 18