

United States Department of the Interior
National Park Service

119

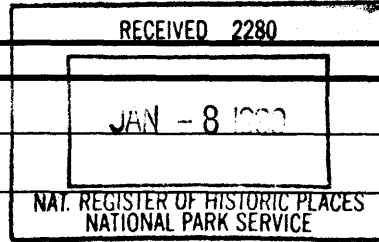
National Register of Historic Places
Registration Form

This form is for use in nominating or requesting determinations for individual properties and districts. See instructions in *How to Complete the National Register of Historic Places Registration Form* (National Register Bulletin 16A). Complete each item by marking "x" on the appropriate line or by entering the information requested. If an item does not apply to the property being documented, enter "N/A" for "not applicable." For functions, architectural classification, materials, and areas of significance, enter only categories and subcategories from the instructions. Place additional entries and narrative items on continuation sheets (NPS Form 10-900a). Use a typewriter, word processor, or computer, to complete all items.

1. Name of Property

historic name FULTON, FRED AND ROSA, BARN

other names/site number _____



2. Location

street & number 1210 278th Boulevard

N/A not for publication

city or town Selma

vicinity

state Iowa code IA county Jefferson code 101

zip code 52588

3. State/Federal Agency Certification

As the designated authority under the National Historic Preservation Act, as amended, I hereby certify that this nomination request for determination of eligibility) meets the documentation standards for registering properties in the National Register of Historic Places and meets the procedural and professional requirements set forth in 36 CFR Part 60. In my opinion, the property meets does not meet) the National Register criteria. I recommend that this property be considered significant (nationally statewide locally). (See continuation sheet for additional comments.)

[Signature]
Signature of certifying official/Title

DGTRD

12-30-98
Date

STATE HISTORICAL SOCIETY OF IOWA

State or Federal agency and bureau

In my opinion, the property (meets does not meet) the National Register criteria. (See continuation sheet for additional comments.)

Signature of certifying official/Title

Date

State or Federal agency and bureau

4. National Park Service Certification

I hereby certify that the property is :

- entered in the National Register.
 See continuation sheet.
- determined eligible for the National Register
 See continuation sheet
- determined not eligible for the National Register
- removed from the National Register.
- Other, (Explain)

[Signature]
Signature of Keeper
Edson H. Beall

Date of Action

2/22/99

Fred and Rosa Fulton Barn
Name of Property

Jefferson County, Iowa
County and State

5. Classification

Ownership of Property
(Check as many lines as apply)

- private
- public-local
- public-State
- public-Federal

Category of Property
(Check only one line)

- building(s)
- district
- site
- structure
- object

Number of Resources within Property
(Do not include previously listed resources in the count.)

Contributing	Noncontributing	
1	0	buildings
		sites
	2	structures
		objects
1	2	Total

Name of related multiple property listing
(Enter "N/A" if property is not part of a multiple property listing)

Louden Machinery Company, Fairfield, Iowa

Number of contributing resources previously listed in the National Register

0

6. Function or Use

Historic Functions
(Enter categories from instructions)

AGRICULTURE/SUBSISTENCE: animal facility

Current Functions
(Enter categories from instructions)

AGRICULTURE/SUBSISTENCE: animal facility

7. Description

Architectural Classification
(Enter categories from instructions)

NO STYLE

Materials
(Enter categories from instructions)

foundation Concrete
walls Wood

roof Asphalt
other Metal
Glass

Narrative Description

(Describe the historic and current condition of the property on one or more continuation sheets.)

Fred and Rosa Fulton Barn
Name of Property

Jefferson County, Iowa
County and State

8. Statement of Significance

Applicable National Register Criteria

(Mark "x" on one or more lines for the criteria qualifying the property for National Register listing)

- A** Property is associated with events that have made a significant contribution to the broad patterns of our history.
- B** Property is associated with the lives of persons significant in our past.
- C** Property embodies the distinctive characteristics of a type, period, or method of construction or represents the work of a master, or possesses high artistic values, or represents a significant and distinguishable entity whose components lack individual distinction.
- D** Property has yielded, or is likely to yield, information important in prehistory or history.

Criteria Considerations

(Mark "x" on all the lines that apply)

Property is:

- A** owned by a religious institution or used for religious purposes.
- B** removed from its original location.
- C** a birthplace or grave.
- D** a cemetery.
- E** a reconstructed building, object, or structure.
- F** a commemorative property.
- G** less than 50 years of age or achieved significance within the past 50 years.

Areas of Significance

(Enter categories from instructions)

ARCHITECTURE

Period of Significance

1947

Significant Dates

1947

Significant Person

(Complete if Criterion B is marked above)

N/A

Cultural Affiliation

Architect/Builder

Louden Machinery Company

Fulton, Fred

Narrative Statement of Significance - (Explain the significance of the property on one or more continuation sheets)

9. Major Bibliography References

Bibliography

(Cite the books, articles and other sources used in preparing this form on one or more continuation sheets.)

Previous documentation on file (NPS):

- previous determination of individual listing (36 CFR 67) has been requested
- previously listed in the National Register
- previously determined eligible by the National Record
- designated a National Historic Landmark
- recorded by American Buildings Survey # _____
- recorded by Historic American Engineering Record # _____

Primary location of additional data:

- State Historical Preservation Office
- Other State agency
- Federal agency
- Local government
- University
- Other

Name of repository _____

Fred and Rosa Fulton Barn
Name of Property

Jefferson County, Iowa
County and State

10. Geographical Data

Acreeage of Property Less than one acre

UTM References

(Place additional UTM references on a continuation sheet.)

1 | 15 | 5 7 2 5 8 0 | 4 5 2 7 9 4 0 |

Zone Easting Northing

2 | | | |

Zone Easting Northing

3 | | | |

Zone Easting Northing

4 | | | |

Verbal Boundary Description

(Describe the boundaries of the property on a continuation sheet)

Boundary Justification

(Explain why the boundaries were selected on a continuation sheet)

11. Form Prepared By

name/title William C. Page, Public Historian; Joanne R. Walroth, Project Associate

organization Jefferson County Historic Preservation Commission date November 15, 1997

street & number 520 East Sheridan Avenue (Page) telephone 515-243-5740 (Page)

city or town Des Moines state Iowa zip code 50313-5017

Additional Documentation

Submit the following items with the completed form:

Continuation Sheets

Maps

A **USGS map** (7.5 or 15 minute series) indicating the property's location.

A **Sketch map** for historic districts and properties having large acreage or numerous resources.

Photographs - Representative **black and white photographs** of the property.

Additional items - (Check with the SHPO or FPO for any additional items)

Property Owner

(Complete this item at the request of SHPO or FPO.)

name E. & R. Fulton Revocable Trust

street & number 1210 278 Boulevard telephone 515-693-9241/515-693-9251

city or town Selma state Iowa zip code 52588

Paperwork Reduction Act Statement: This information is being collected for applications to the National Register of Historic Places to nominate properties for listing or determine eligibility for listing, to list properties, and to amend existing listings. Response to this request is required to obtain a benefit in accordance with the National Historic Preservation act, as amended (16 U.S.C. 470 et seq.).

Estimated Burden Statement: Public reporting burden for this form is estimated to average 18.1 hours per response including time for reviewing instructions, gathering and maintaining data, and completing and reviewing the form. Direct comments regarding this burden estimate or any aspect of this form to the Chief, Administrative Services Division, National park Service, P.O. Box 37127, Washington, DC 20013-7127; and the Office of Management and Budget, Paperwork Reductions Projects (1024-0018), Washington, DC 20503.

United States Department of the Interior
National Park Service

**NATIONAL REGISTER OF HISTORIC PLACES
CONTINUATION SHEET**

Section number 7 Page 1

CFN-259-1116

Fred and Rosa Fulton Barn, Jefferson County, Iowa.

GENERAL DESCRIPTION

Constructed in 1947, this Gothic roof barn rests on a poured concrete foundation and features a balloon framing system. The barn was built by Fred Fulton from architectural drawings supplied by the Loudon Machinery Company. The barn also features horizontal wood siding as its wall cladding material. This building possesses a rectangular footprint and is covered by a Gothic-shaped roof supported by rafters built from a Loudon-devised laminated design. This barn also features many items of equipment designed and manufactured by the Loudon Machinery Company. This barn is presently used for general farm purposes. For a barn of its age, this building is in outstanding condition.

BARN

This is a ground-level, center drive dairy barn, covered with a Gothic roof. The building rests on a poured concrete foundation. It is rectangular in shape and measures approximately 34' x 60'. The framing system of this building is balloon and the exterior walls are clad with horizontal wood siding. The barn features a Gothic roof, whose laminated rafters were laid out on the mow floor, raised into place, and nailed to the building's balloon frame, all according to a Loudon design. (See Continuation Sheets 7-8 and 7-9.) The barn possesses 31 of these rafters built 24" o/c apart.

This barn possesses a total of 16 window openings. The windows on the main floor feature Loudon "Master-Made" ventilator windows, made of steel and glass. (See Continuation Sheet 7-13.) The four-pane windows flanking the loft entry are of wood. The center entrance of this barn on its west elevation features wooden sliding doors, mounted on Loudon door hangers and track. The roof of this barn features two Loudon-designed metal aerators, each with a weather vane designed as a running horse.

In the interior, the main floor and the hay mow each contains an area of approximately 2,400 square feet. The main floor is laid out along a central drive, which runs east and west. (See Continuation Sheet 7-6.) Access to the mow is gained by an opening in the mow floor and a ladder to it, located in the northwest corner of the barn. The main floor of this barn is constructed of poured concrete.

The main floor of the barn consists of one large space. A series of eight steel posts are ranked along a center drive and support the mow floor. Several temporary wooden fences currently run between a few of the steel posts at the eastern end of the building. These fenced areas are used to shelter livestock on an *ad hoc* basis.

The hay mow features a Loudon-designed hay fork and carrier, which remain in place under the ridge of the barn's roof. The roof is further supported by a series of eight wooden poles situated above the steel posts on the main floor and running up to the rafters. Although the Loudon plans for this barn did not include these wood posts, Fred Fulton built his barn using them for further strength. He had seen a similar barn in Van Buren County, whose roof had begun to fail, and he wished to insure that this would not happen to his own. (Rosa Fulton informant interview)

United States Department of the Interior
National Park Service

NATIONAL REGISTER OF HISTORIC PLACES CONTINUATION SHEET

Section number 7 Page 2

CFN-259-1116

Fred and Rosa Fulton Barn, Jefferson County, Iowa.

Alterations have been made to the Fulton Barn by way of attachments. A milking parlor was added to the barn at the barn's southwest corner. This 1-story addition was built in 1948 soon after the barn was completed. It features a concrete foundation, balloon frame, wood exterior siding, and a side-gable roof. Several additions also have been built adjacent to the building at later times. They include a 1-story wing attached to the east of the building in 1985 or 1986. Two Harveststore silos are situated adjacent to this wing. An addition is also situated between the ell formed by the milking parlor and the main barn. It was constructed circa 1968. The milking parlor should be viewed as historically associated with the original barn, because it was constructed to facilitate Fred Fulton's dairy operation. While the later additions to the barn are visually distracting, they are reversible.

At the time of its construction, Fred Fulton bought Loudon dairy stanchions for installation in the building. Before using them, however, he loaned them to a neighbor. The neighbor did not return the stanchions so they were never installed in the Fulton Barn as intended. In spite of these elaborate preparations, Fulton never actually dairy farmed but raised cattle instead. Until 1961, the barn was used primarily to store loose hay. Subsequently it was used to store baled hay. Presently, a part of the barn is used for animal shelter and a part for general storage.

SITE

This barn is situated in the southwest quarter of the southwest quarter of Section 33 in Township 71 North Range 11 West, also known as Des Moines Township. The National Register boundaries encompass a 100' x 200' parcel of land within this working farmstead.

The farmstead possesses several other buildings. These buildings are oriented along a farmstead driveway, which runs north and south and accesses the farmstead from 278th Boulevard. A farmhouse stands on the west side of this drive. It is a 1-story, frame, side-gabled, single-family dwelling, probably constructed in the early Twentieth Century. Another frame, single-family dwelling is situated to the west of this house. A 1-bay, frame garage is situated directly to the west of the driveway. The farmyard is situated to the east of this driveway. It consists of the Fulton Barn, a modern pole-barn type building, clad with metal siding situated to the south of the barn, and some smaller sheds. Fenced lots are situated between the pole barn and the barn.

The immediate surroundings of the Fulton Barn are rolling in topography, riven with creeks, and in a transition area between the Des Moines River valley and the upland prairies. This is reflected in the fact that few of the country roads in this area are laid out to the cardinal points of the compass but, rather, conform to that topography. The land use throughout this vicinity is agricultural. The town of Selma, Van Buren County, Iowa, is located about one mile to the south.

United States Department of the Interior
National Park Service

NATIONAL REGISTER OF HISTORIC PLACES CONTINUATION SHEET

Section number 7 Page 3

CFN-259-1116

Fred and Rosa Fulton Barn, Jefferson County, Iowa.

SITE MAP

ARROW LOCATES PROPERTY



Source: U.S.G.S. Map (7.5 Minute Series), Eldon Quadrangle, 1956, Photorevised 1976.

United States Department of the Interior
National Park Service

NATIONAL REGISTER OF HISTORIC PLACES CONTINUATION SHEET

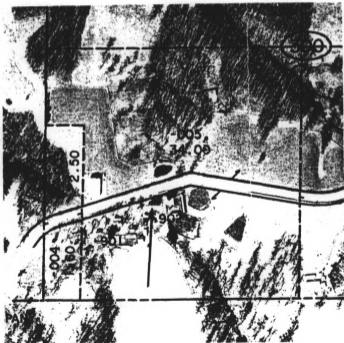
Section number 7 Page 4

CFN-259-1116

Fred and Rosa Fulton Barn, Jefferson County, Iowa.

AERIAL PHOTOGRAPH

ARROW LOCATES BARN



Scale: One inch equals 400 feet.

Source: The Sidwell Company, 1994.



United States Department of the Interior
National Park Service

NATIONAL REGISTER OF HISTORIC PLACES
CONTINUATION SHEET

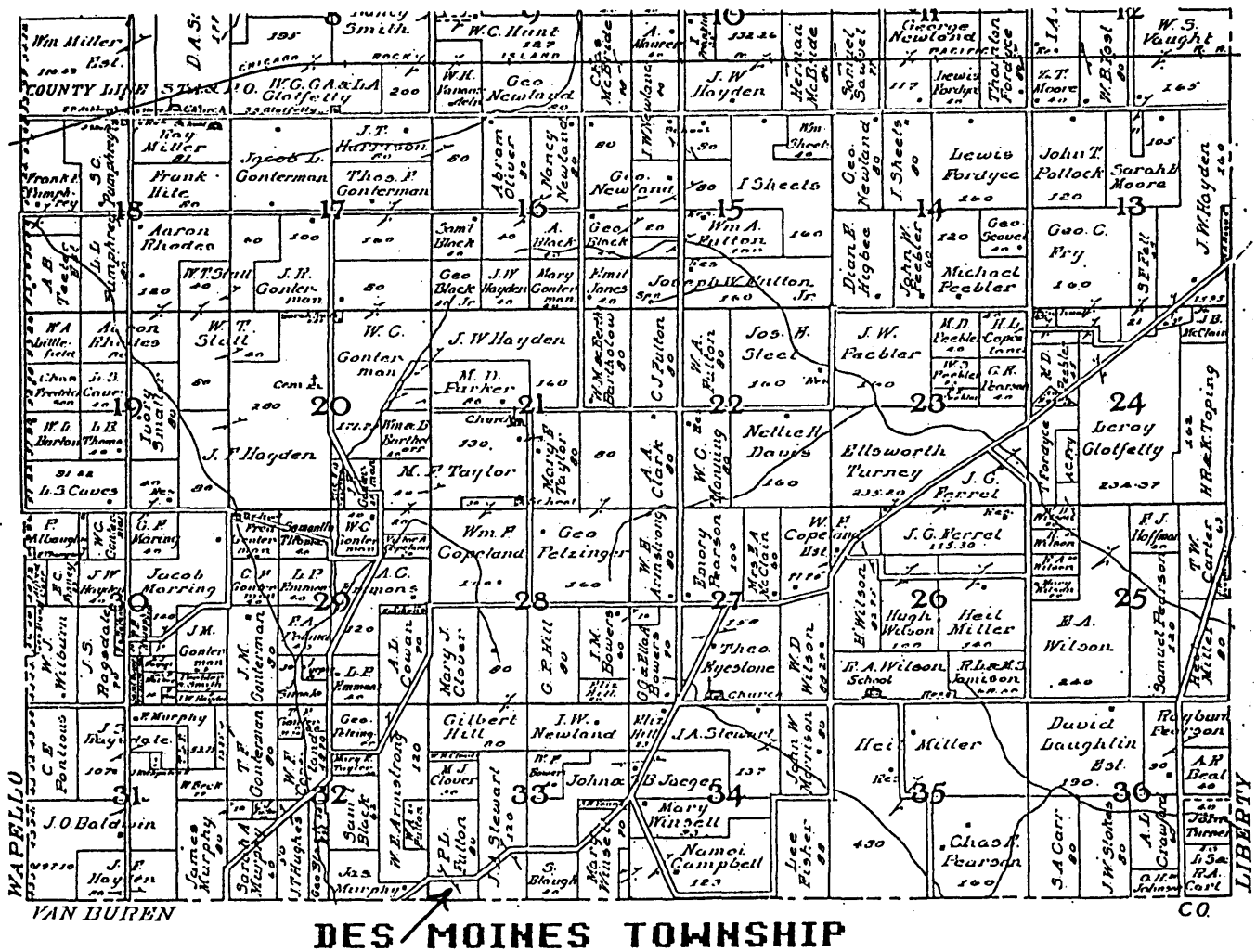
Section number 7 Page 5

CFN-259-1116

Fred and Rosa Fulton Barn, Jefferson County, Iowa.

1909 MAP

ARROW LOCATES FULTON FARMSTEAD



United States Department of the Interior
National Park Service

NATIONAL REGISTER OF HISTORIC PLACES CONTINUATION SHEET

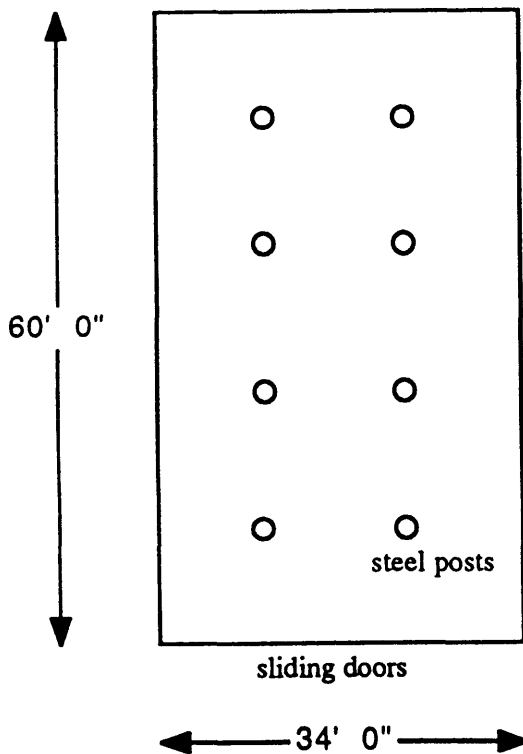
Section number 7 Page 6

CFN-259-1116

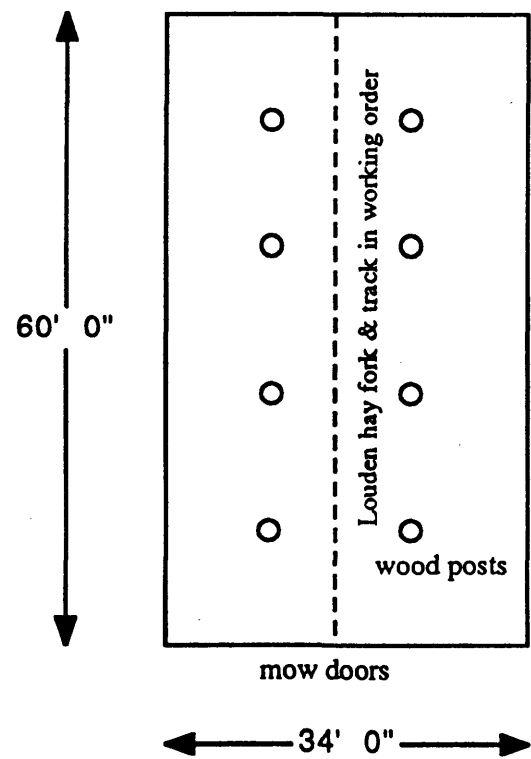
Fred and Rosa Fulton Barn, Jefferson County, Iowa.

FLOOR SKETCH PLANS

MAIN FLOOR



HAY MOW



United States Department of the Interior
National Park Service

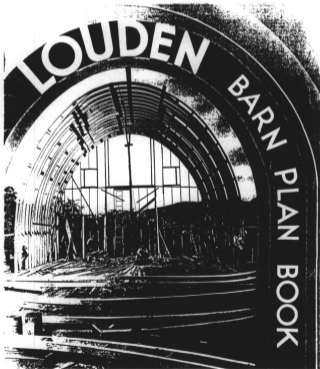
NATIONAL REGISTER OF HISTORIC PLACES
CONTINUATION SHEET

Section number 7 Page 10

CFN-359-1116

Fred and Rosa Fulton Barn, Jefferson County, Iowa.

LOUDEN BARN RAISING TECHNIQUE



This photograph pictures men building and erecting the rafters of a Gothic roof barn from the floor of the hay mow. Fred Fulton used this technique to build his barn. According to Loudon's catalog, "Today a few men can raise the frame of the largest barn. No need to call on all the neighbors for help."

Source: Cover and inside cover of the circa 1932 *Louden Barn Plan Book*.

United States Department of the Interior
National Park Service

**NATIONAL REGISTER OF HISTORIC PLACES
CONTINUATION SHEET**

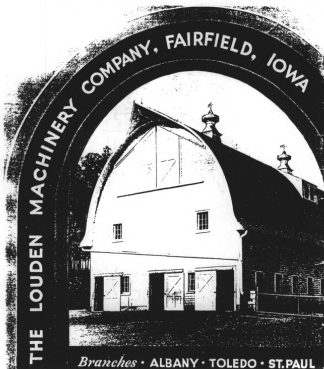
Section number 7 Page 11

CFN-259-1116

Fred and Rosa Fulton Barn, Jefferson County, Iowa.

GOTHIC ROOF BARN COMPLETED

THIS LOUDEN GRAPHIC EMPHASIZES A STREAMLINED LOOK.



This graphic served as the back cover of a circa 1932 Louden catalog. It pictures a Gothic roof barn similar to Fred Fulton's.

Source: *Louden Barn Plan Book*, back cover.

United States Department of the Interior
National Park Service

NATIONAL REGISTER OF HISTORIC PLACES CONTINUATION SHEET

Section number 7 Page 12

CFN-259-1116

Fred and Rosa Fulton Barn, Jefferson County, Iowa.

LOUDEN "MASTER-MADE" WINDOWS

Louden

AN ENTIRELY *New* AND DIFFERENT DESIGN!

The Louden "MasterMade" Window is the steel window that farmers have been waiting for! Never before has the "Wavy Wing" principle been utilized in the opening and closing mechanism of a window. Notice the complete lack of complicated baills, ties and gadgets ordinarily found in steel windows. You don't have to be a mechanic to open or close the Louden window. Not at all! It is absolutely a one-hand operated window.

To open the Louden "MasterMade", you merely give a slight tug on the chain and pull open to the desired position. If you want the window in an intermediate position, the lugs on the top of the upper section fit snugly and securely into the slot in the "Wavy Wing". To close, merely push the window closed.

Just like your automobile, the Louden "MasterMade" is bonderized before painting. The chemical action of bonderizing changes the smooth, metallic surface of the steel to a phosphate coating composed of microscopic crystals. The paint flows around these crystals and thus becomes bonded to the metal. Consequently, if the window is scratched, the bonderizing neutralizes the alkali produced by the electro-chemical action of the rust and hence the rust cannot spread. Then, too, bonderizing never warps the window as do other metallic finishing processes. This assures you a tight-fitting window that will be a pleasure to work with for years and years to come. For further information about bonderizing ask your car dealer.

In all, there are ten superior features found only in the new Louden "MasterMade". And it actually costs less per square foot of light area than almost any other window or sheet metal frame and wooden sash!

Three of the "Master-Made" positions illustrated at right. The quickest opening and closing barn window on the market!



SPECIFICATIONS

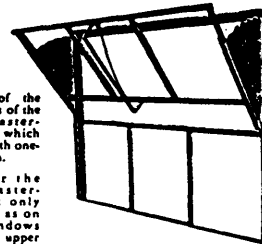
SIZE—Frame 5' 8-3/4" wide, including masonry fins, x 2' 11-1/16" high.
GLASS—4 panes 13-1/2" x 16"—2 panes 12-3/4" x 16"—exposed glass area 8.2 sq. ft. per window—glass not furnished.
CONSTRUCTION—"Z" and "T" rolled steel sections 1.8" thick—riveted—wings, 16 gauge galvanized.
FINISH—Bonderized undercoating—Gray baked-on finish. Wings aluminized.
WEIGHT—Ready for shipment, 58 lbs.

Right—Close-up view of the famous "Wavy Wings". If your steel windows don't have "Wavy Wings", they are not genuine Louden "MasterMade" steel ventilating windows.



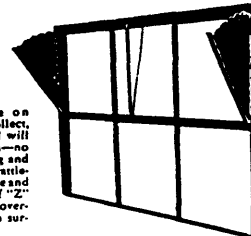
These "Wavy Wings" have a dual purpose. Not only is the "MasterMade" a one-hand operated window because of them, but they give you no-draft ventilation since they prevent the cold air from blowing directly on your animals. These wings are actually the heaviest window wings on the market! 16 gauge steel!

Right—One of the eight positions of the Louden "Master-Made", all of which are attained with one-hand operation.



Screens for the Louden "Master-Made" cost only 50% as much as on ordinary windows since only the upper half opens!

The Louden "MasterMade" gives you easy operation in all weather. Only one thin edge on which ice can collect, and a slight pull will break this film—no fuss, no chiseling and it's absolutely rattle-proof, since frame and sash are made of "Z" sections which overlap and give two surface contacts.



FOR MASONRY OR WOODEN CONSTRUCTION AT NO EXTRA COST. The Louden "MasterMade" was designed to fit into openings of standard 12" tile. This makes it unnecessary to cut tile to odd lengths, thus saving considerable time in installing. And the masonry fins do not have to be knocked off for wood construction installation.

This advertisement illustrates the type of windows installed in the Fred and Vera Fulton Barn.

Source: *Louden Farm Building Plans and Equipment Catalog 75, 1942, p. 105.*

United States Department of the Interior
National Park Service

NATIONAL REGISTER OF HISTORIC PLACES CONTINUATION SHEET

Section number 8 Page 13

CFN-259-1116

Fred and Rosa Fulton Barn, Jefferson County, Iowa.

SUMMARY OF SIGNIFICANCE

Built in 1947 for use in dairy farming, the Fred and Rosa Fulton Barn possesses architectural significance, under National Register Criterion C. The Fulton Barn calls attention to the Architectural Department of the Loudon Machinery Company, which designed it. This significance is further reinforced because that firm's plans for the barn remain extant. The Fulton Barn is a very well-preserved example of Loudon's Gothic laminated roof design. The building also features a number of other Loudon-manufactured devices, including "Master-Made" ventilator windows, metal roof aerators, hay carrier and fork, and door tracks and trolleys. This equipment was installed at the time of the barn's construction and remains in working order today.

The period of significance, under Criterion C, for the Fred and Rosa Fulton Barn is 1947, the year in which it was completed.

The property contains one contributing resource for this nomination--the barn and its attached Loudon-designed and manufactured equipment--and two adjacent noncontributing Harvestore silos.

BACKGROUND

Following World War II, Fred Fulton (1906-1994) intended to establish a dairy operation on his farm in Des Moines Township, Jefferson County, Iowa. To this end, he built an up-to-date dairy barn to facilitate this operation. In spite of these preparations, Fulton opted to raise cattle and never actually began dairy farming.

ARCHITECTURE

The Fred and Rosa Fulton Barn is architecturally significant, under National Register Criterion C, because it calls attention to the Gothic Roof barn design of the Architectural Department of the Loudon Machinery Company and a number of labor-saving products designed and manufactured by that firm as go-alongs with their barn designs. (See cover document.) The Fulton Barn also provides a well-documented case study of how Loudon-designed barns were built in Jefferson County.

Design

Constructed in 1947, the Fulton Barn is a fine, well-preserved example of the Gothic Roof barn design. Although smaller in size, the Fulton Barn closely resembles a barn featured on the cover of the Loudon Barn Plan Book, issued by the Loudon Machinery Company circa 1931. (See Continuation Sheet 7-10.) Popular during the 1930s and 1940s, this type of roof featured a "method of gothic rib construction whereby the rafters are built up of five 1" x 4" boards, bent to proper curvature and nailed and bolted together." (*Loudon Machinery Company General Catalog 19*)

United States Department of the Interior
National Park Service

NATIONAL REGISTER OF HISTORIC PLACES
CONTINUATION SHEET

Section number 8 Page 14

CFN-259-1116

Fred and Rosa Fulton Barn, Jefferson County, Iowa.

Fred Fulton, the builder of this barn, followed the plans provided by the Architectural Department of the Loudon Machinery Company to construct these rafters. A few years later, the Loudon Machinery Company described the method Fulton used in its *Better Barns Book Catalog 87* of 1954:

GOTHIC ROOF BARN--Provides a large mow capacity without interference from trusses or braces and sheds the wind, rain, and snow with ease. Rafters are built up from five 1" x 4" boards, bent to the proper curvature, and nailed and bolted together. However, prefabricated laminated rafters are available in most localities. Rafters are spaced every 24" and trussed every second, third, or fourth rafter, depending on height and span. (Loudon Machinery Company 1954:81)

This barn was one of the last farm structures built from Loudon designs in Jefferson County, Iowa.

Equipment

The Fulton Barn possesses a series of Loudon-designed and manufactured products, which were installed in the building at the time of its construction and remain in good working order to the present day. This equipment includes a hay fork and carrier, ventilator windows, metal aerators, and door hangers, tracks, and trolleys. Fred Fulton also purchased Loudon steel stanchions for this barn, but they were never installed. A neighbor borrowed and never returned them. Although lacking its stanchions, the Fulton Barn possesses all its other original Loudon equipment and conveys to the viewer the appearance of a modern dairy barn from the mid-Twentieth Century.

Although many dairy operations in Jefferson County undoubtedly were designed and equipped by the Loudon Machinery Company, the Fulton Barn with its architectural plans and rich collection of Loudon equipment stands as the best documented barn of this type in the county. An on-going survey and public information campaign over the last four years has failed to identify other barns of equal provenance. The August and Vera Luedtke Barn in Center Township has preserved its original Loudon steel stanchions and is significant for that reason. (See that nomination in this MPS.)

Construction

The Fred and Rosa Fulton Barn is significant because its construction illustrates one way Loudon designed barns were constructed. Fred Fulton built the barn himself and customized the design according to his own wishes. Fulton had obtained a set of Loudon plans through the good offices of Harry Fulton, his brother, who worked for Loudon as a salesman and provided the contact. (Rosa Fulton informant interview)

Fred Fulton obtained these plans in 1946 or 1947. These were standard plans, dated 1938, and consisted of two sheets. One of these sheets provided a template to use in the construction of the

**United States Department of the Interior
National Park Service**

**NATIONAL REGISTER OF HISTORIC PLACES
CONTINUATION SHEET**

Section number 8 Page 15

CFN-259-1116

Fred and Rosa Fulton Barn, Jefferson County, Iowa.

barn's framework. This framing was to be laid out and constructed on the ground and then raised into place. (See Continuation Sheet 7-9.)

Fred customized this design to his own needs. He had seen a Gothic roofed barn in Van Buren County, whose roof was sagging. To insure against this, Fred installed eight wood posts in the mow above the steel columns situated on the main floor. The purpose of these extra members was to augment support for the barn's roof. They were not included in the Louden design. (*Ibid.*)

The construction of the Fulton Barn caused considerable interest in the surrounding neighborhood when it was built. Although Fred provided 65% or 75% of the required labor, he also employed two carpenters to help him, including a Mr. Bonnett, hired at a wage of \$1.00 per hour. (*Ibid.*)

In 1948, Fred built a 1-story, gable-roofed attachment to the barn. Located on the south, this was intended to serve as a milking parlor, although Fred never used it as such.

REPRESENTATION IN OTHER CULTURAL RESOURCES SURVEYS

This barn was surveyed in 1996 as part of the "Louden Machinery Company, Fairfield, Iowa" hybrid reconnaissance and intensive surveys of that historic context within Jefferson County, Iowa. As one resource within that survey, the Fulton Barn was evaluated as individually eligible, under Criteria C, for nomination to the National Register of Historic Places. The State Historical Society of Iowa was informed of this determination through the survey report and an Iowa Site Inventory Form.

POTENTIAL FOR PREHISTORIC ARCHAEOLOGY

Over the years of his farming, Fred Fulton assembled a sizable collection of Native American artifacts found on this farm. Fulton housed this collection in a building on the farmstead, which remains open today as a museum. The likelihood for the discovery of additional prehistoric material on this site remains high, although not necessarily in the immediate vicinity of the Fulton Barn.

United States Department of the Interior
National Park Service

**NATIONAL REGISTER OF HISTORIC PLACES
CONTINUATION SHEET**

Section number 9 Page 16

CFN-259-1116

Fred and Rosa Fulton Barn, Jefferson County, Iowa.

BIBLIOGRAPHY

Please refer to Section I of the Multiple Property Documentation Form for complete bibliography.

PRIMARY

Andreas, A. T.; *Historical Atlas of the State of Iowa*; Chicago; Andreas Company; 1875.

Ogle, George A. & Company; *Standard Atlas of Jefferson County, Iowa*; Chicago; Geo. A. Ogle & Co.; 1909.

Louden, Machinery Company, *Louden Barn Plan Book*; The Loudon Machinery Company, Fairfield Iowa; circa 1932.

Department of Agricultural Engineering of the Loudon Machinery Co.; Plans for a Gothic Roof Barn. Property of Loyal Fulton. Two sets of drawings including the following:

“Cross Section and Detail, Arched Roof Barn; No. G-993, 1936.”

“Hay Door Details for Gothic Roof Barn, No. G2300, Type O.” No date.

SECONDARY

Jefferson County Assessor's Office, Assessor's Property Record Card.

Page, William C., and Joanne R. Walroth; *The Loudon Machinery Company, Fairfield, Iowa*; Intensive cultural resources report prepared for and on file at the Jefferson County Historic Preservation Commission and State Historical Society of Iowa, Des Moines; 1996.

ORAL HISTORY

Fulton, Loyal.; Oral informant interview with William C. Page, April 18, 1996.

Fulton, Rosa.; Oral informant interview with William C. Page, April 18, 1996.

United States Department of the Interior
National Park Service

NATIONAL REGISTER OF HISTORIC PLACES CONTINUATION SHEET

Section number 10 Page 17

CFN-259-1116

Fred and Rosa Fulton Barn, Jefferson County, Iowa.

VERBAL BOUNDARY DESCRIPTION

The property is a rectangular parcel measuring 100 x 200 feet, whose northwest corner is 15 feet directly northwest of the northwest corner of the foundation of the barn, thence east 200 feet, thence south 100 feet, thence west 200 feet, thence north 100 feet to the point of beginning.

BOUNDARY JUSTIFICATION

Contains all land associated historically with the resource.

**United States Department of the Interior
National Park Service**

**NATIONAL REGISTER OF HISTORIC PLACES
CONTINUATION SHEET**

Section number 10 **Page** 18

CFN-259-1116

Fred and Rosa Fulton Barn, Jefferson County, Iowa.

LIST OF PHOTOGRAPHS

1. Fred and Rosa Fulton Barn
1210 278th Boulevard
Selma, IA 52528
Looking southeast
William C. Page, Photographer
February 28, 1998

2. Fred and Rosa Fulton Barn
1210 278th Boulevard
Selma, IA 52528
Looking north
William C. Page, Photographer
February 28, 1998

3. Fred and Rosa Fulton Barn
1210 278th Boulevard
Selma, IA 52528
Detail of Louden door hanger and window
Looking southeast
William C. Page, Photographer
February 28, 1998

4. Fred and Rosa Fulton Barn
1210 278th Boulevard
Selma, IA 52528
Detail of truss
William C. Page, Photographer
February 28, 1998