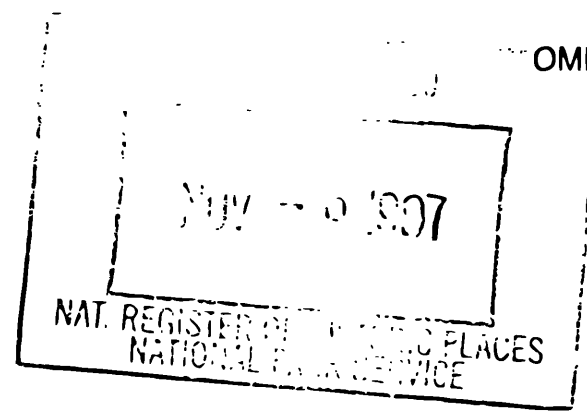


United States Department of the Interior
National Park Service

National Register of Historic Places Registration Form



1524

This form is for use in nominating or requesting determinations for individual properties and districts. See instructions in *How to Complete the National Register of Historic Places Registration Form* (National Register Bulletin 16A). Complete each item by marking "x" in the appropriate box or by entering the information requested. If an item does not apply to the property being documented, enter "N/A" for "not applicable." For functions, architectural classification, materials, and areas of significance, enter only categories and subcategories from the instructions. Place additional entries and narrative items on continuation sheets (NPS Form 10-900a). Use a typewriter, word processor, or computer, to complete all items.

1. Name of Property

historic name Goffstown High School

other names/site number NA

2. Location

street & number 12 Reed Street NA not for publication

city or town Goffstown NA vicinity

state New Hampshire code NH county Hillsborough code 011 zip code 03045

3. State/Federal Agency Certification

As the designated authority under the National Historic Preservation Act, as amended, I hereby certify that this nomination request for determination of eligibility meets the documentation standards for registering properties in the National Register of Historic Places and meets the procedural and professional requirements set forth in 36 CFR Part 60. In my opinion, the property meets does not meet the National Register criteria. I recommend that this property be considered significant nationally statewide locally. (See continuation sheet for additional comments.)

Nancy C. Miller 10/30/97
Signature of certifying official/Title Date

NEW HAMPSHIRE
State of Federal agency and bureau

In my opinion, the property meets does not meet the National Register criteria. (See continuation sheet for additional comments.)

Signature of certifying official/Title Date

State or Federal agency and bureau

4. National Park Service Certification

I hereby certify that the property is:

- entered in the National Register. See continuation sheet.
- determined eligible for the National Register See continuation sheet.
- determined not eligible for the National Register.
- removed from the National Register.
- other, (explain:)

Signature of the Keeper 12/19/97
John R. Savage

Name of Property

County and State

5. Classification

Ownership of Property (Check as many boxes as apply)

- private, public-local, public-State, public-Federal

Category of Property (Check only one box)

- building(s), district, site, structure, object

Number of Resources within Property (Do not include previously listed resources in the count.)

Table with 2 columns: Contributing, Noncontributing. Rows for buildings, sites, structures, objects, Total.

Name of related multiple property listing (Enter "N/A" if property is not part of a multiple property listing.)

N/A

Number of contributing resources previously listed in the National Register

0

6. Function or Use

Historic Functions (Enter categories from instructions)

EDUCATION: school

Current Functions (Enter categories from instructions)

DOMESTIC: multiple dwelling

7. Description

Architectural Classification (Enter categories from instructions)

Collegiste Gothic

Materials (Enter categories from instructions)

foundation Concrete

walls Brick

roof Synthetics

other Wood

Narrative Description

(Describe the historic and current condition of the property on one or more continuation sheets.)

**United States Department of the Interior
National Park Service****National Register of Historic Places
Continuation Sheet**Section number 7 Page 1Goffstown High School
Goffstown (Hillsborough County)
New Hampshire

The Goffstown High School was built in 1925 on a side street just east of the Goffstown Village, sharing the site with the White School, constructed in 1875. The High School is a three story, flat-roofed brick structure which is roughly U-shaped in plan with a narrow courtyard facing north. Constructed in two different phases, the original 1925 section is that to the west while the wider eastern section was constructed in 1948 to house an auditorium, gymnasium and additional classrooms. The building is designed in a simplified Collegiate Gothic style and the principal west and south elevations are enlivened by a series of projections and recesses and Gothic-inspired stone trim. On the original building the brick consists solely of stretchers while on the addition the brick is laid in a bond alternating five courses of stretcher brick to a single row alternating stretchers and headers. The brick contrasts with stone trim including the foundation, a beveled water table, cornice moldings, string courses, window sills and lintels. Above the torus and cavetto cornice moldings a simple brick parapet surrounds the building. Predominant window types include paired 6/2 doublehung sash on the original building as well as 6/6 at the lower level. On the 1948 addition fenestration includes 12/12 and 15/15 windows.

The west elevation, part of the original 1925 structure, features a central stepped parapet with a central rectangular panel reading "Goffstown High School". Stone blocks mark the corners of each intersecting rise. Projecting slightly from the rest of the elevation, the two end sections of this elevation are windowless and consist of large decorative brick panels centered between the water table and cornice with stone cornerblocks and a margin formed by stretcher and header bricks. The first floor openings in the central section consist of six sets of paired 6/2 doublehung openings. The first floor windows share a common stone lintel and sill. The second floor openings share the same spacing although they lack lintels and the window caps extend to the underside of the cornice. At the basement level there are six individual 6/6 windows in the central section with two windows punctuating the projection to each side.

The original entrances to the building are located on the narrow north and south ends of the western section. Each displays a stone tabbed door surround with stone voussoirs forming a pointed Tudor arch framed by angled paneled pedestals supported by nobbly foliate elements. The original wooden and glass double doors were replaced with aluminum and glass double doors in the 1960s. As part of the present rehabilitation, the aluminum doors have been replaced with wooden and glass double doors with each leaf divided into 3 x 5 panes. The door is capped by a glass transom with leaded vertical divisions. Fronting each entrance is a set of stone steps with a modern metal railing. Above each entrance is a set of three windows. The center window contains a fixed 2 x 4 light sash and is flanked by two 4/4 windows. The tabbed stone surround is capped by a drip mold. On both the north and south ends there are four doublehung 6/2 windows adjacent to the entrance. On the south end, east of the entrance the building projects slightly, punctuated by a set of four openings with a set of metal double doors leading to the boiler room in the basement. The former door opening to the east has recently been replaced by two individual 6/6 windows. The

**United States Department of the Interior
National Park Service****National Register of Historic Places
Continuation Sheet**Section number 7 Page 2Goffstown High School
Goffstown (Hillsborough County)
New Hampshire

two floors above each display a set of four 6/2 windows. To the east, there is an individual 6/6 window on each level.

Further to the east the entrance associated with the 1948 addition projects slightly, consisting of a triple portal containing three sets of modern multi-light double doors, capped by glass transom lights and flanked by stone tabs. Each door displays an individual label mold while a single entablature unites the three doors. Upstairs, the central 12/12 window is surrounded by tabs and a central keystone. To each side is an individual 8/12 window with plain, flat stone surround. On the third floor, three sets of double 6/6 windows are sandwiched between a string course and the projecting cornice. To the east of the entrance, the building face steps back again and is punctuated by a single original first floor opening with rectangular sill and lintel. On the second floor above three 6/6 windows with stone sills have been inserted as part of the present rehabilitation.

The east elevation of the front section displays three window openings on both the basement level and first floor, consisting of a central 10/10 window flanked on each side by an 8/8 sash. Five 6/6 openings punctuate the top story. The rear portion of the building is recessed slightly and lacks the top cornice moldings visible on the south elevation. Originally five large 15/15 windows with stone sills punctuated the upper level on the east side, corresponding to the gymnasium/auditorium on the interior. As part of the rehabilitation the existing historic fenestration pattern has been retained although altered somewhat to accommodate the division of the building into living units. The five oversized window openings have been extended downward with the insertion of an additional section of 5 x 3 paned opaque glass. The lower level is punctuated by a set of modern multi-glass double doors, five large 10/10 windows and two smaller rectangular 4/4 windows (one of which is new) to the south. The addition rests on a concrete foundation.

The north side of the 1948 section was originally windowless except for three lower level openings below the lower belt course. As part of the rehabilitation two 6/6 windows have been inserted on each of the upper two floors. The interior courtyard was formerly punctuated by oversized 15/15 windows on the east-facing wall. These have been replaced by five 6/6 windows and 4/4 windows on the upper two floors with three 10/10, a single 6/6 and three 4/4 windows lighting the basement. The north-facing wall of the courtyard is punctuated by three bays of doublehung 6/6 windows on the north-facing wall. On the west wall, part of the original 1925 structure there are two sets of paired 6/2 windows with stone sills and lintels on each of the two upper floors with five individual 6/6 windows in the basement.

The interior of the original 1925 building was apparently substantially altered after the construction of a new auditorium and gymnasium in the 1948 addition. As originally constructed, the 1925 school building contained a gymnasium and locker rooms in the basement level with a stage and auditorium, library, foreign language room and business classrooms upstairs. Located

**United States Department of the Interior
National Park Service**

**National Register of Historic Places
Continuation Sheet**

Goffstown High School
Goffstown (Hillsborough County)
New Hampshire

Section number 7 Page 3

on the first floor was the principal's office, nurse's office and in the northwest corner, the lab was located over the girl's locker room.

In its original state the interior of the school building was generally lacking in decorative detailing. More recently it had suffered extensive deterioration with widespread peeling paint surfaces and water damage resulting from the failure of roof drains. In the 1925 section of the building the north-west hallways retain their original simple wooden moldings and baseboards. Many of the units display exterior doors which reuse the building's original wooden units with five horizontal panels. An original wooden flag holder is visible in one of the upstairs units.

As originally constructed, the 1948 addition was characterized by concrete block walls and concrete or linoleum floors. As part of the rehabilitation all of the concrete wall surfaces were covered with sheetrock. Historic suspended light fixtures are visible in the front meeting rooms and the main vestibule and a chalkboard from the 1925 building is reused in the dining hall.

The school building is surrounded on all sides by an asphalt parking lot with a buffer of landscaping around the building consisting of small trees and low plantings with simple coach lamp standards. A new brick sidewalk with granite curbing extends along the front and part of the west elevation. Brick paving now fills the center of the courtyard with low plantings along the outside of the courtyard, adjacent to the building. Prior to the construction of the 1948 addition a large lawn area was located to the east of the school and was used for graduations. According to town reports, the sidewalk was extended along the front of the main entrance to the auditorium in 1954. Construction of the tarred area was completed in 1956. At about the same time cement steps were constructed from the high school to the bus stop on Mill Street. Today, there is a simple wooden deck at the top of the hill, across the parking lot from the former school building.

Reed Street, formerly known as Parker Street, extends in a north-south direction to the east of the building. Mill Street acts as the southern bound of the property, down the hill from the school building. To the north of the building there is a narrow paved drive. School Street, a narrow lane leading from Main Street, accesses the building from the west. With the exception of the White Building to the west, which currently houses the Superintendent of Schools, the former High School is surrounded on all sides by small 19th and 20th century frame residences. Visible to the south are excellent views of the Piscataquog River and several late 19th century mill buildings.

8. Statement of Significance

Applicable National Register Criteria

(Mark "x" in one or more boxes for the criteria qualifying the property for National Register listing.)

- Criteria A, B, C, D with checkboxes and descriptions.

Criteria Considerations

(Mark "x" in all the boxes that apply.)

Property is:

- Criteria A, B, C, D, E, F, G with checkboxes and descriptions.

Areas of Significance

(Enter categories from instructions)

Education

Period of Significance

1925-1947

Significant Dates

1925

1948

Significant Person

(Complete if Criterion B is marked above)

N/A

Cultural Affiliation

N/A

Architect/Builder

unknown

Narrative Statement of Significance

(Explain the significance of the property on one or more continuation sheets.)

9. Major Bibliographical References

Bibliography

(Cite the books, articles, and other sources used in preparing this form on one or more continuation sheets.)

Previous documentation on file (NPS):

- Documentation checkboxes: preliminary determination, previously listed, etc.

Primary location of additional data:

- Location checkboxes: State Historic Preservation Office, Local government, etc.

Name of repository:

Goffstown High School
Name of Property

Hillsborough County, New Hampshire
County and State

10. Geographical Data

Acreage of Property 1.13

UTM References

(Place additional UTM references on a continuation sheet.)

1	1 9	2 8 8 2 7 0	4 7 6 6 0 3 0
	Zone	Easting	Northing
2			

3			
	Zone	Easting	Northing
4			

See continuation sheet

Verbal Boundary Description

(Describe the boundaries of the property on a continuation sheet.)

Boundary Justification

(Explain why the boundaries were selected on a continuation sheet.)

11. Form Prepared By

name/title Lisa B. Mausolf, Preservation Consultant

organization _____ date July 1997

street & number 20 Terrace Park telephone (617) 942-2173

city or town Reading state MA zip code 01867

Additional Documentation

Submit the following items with the completed form:

Continuation Sheets

Maps

A **USGS map** (7.5 or 15 minute series) indicating the property's location.

A **Sketch map** for historic districts and properties having large acreage or numerous resources.

Photographs

Representative **black and white photographs** of the property.

Additional items

(Check with the SHPO or FPO for any additional items)

Property Owner

(Complete this item at the request of SHPO or FPO.)

name The Meetinghouse at Goffstown LP
c/o Finlay Properties, Inc.

street & number 1000 Elm Street 14th Floor telephone _____

city or town Manchester state NH zip code 03101

Paperwork Reduction Act Statement: This information is being collected for applications to the National Register of Historic Places to nominate properties for listing or determine eligibility for listing, to list properties, and to amend existing listings. Response to this request is required to obtain a benefit in accordance with the National Historic Preservation Act, as amended (16 U.S.C. 470 et seq.).

Estimated Burden Statement: Public reporting burden for this form is estimated to average 18.1 hours per response including time for reviewing instructions, gathering and maintaining data, and completing and reviewing the form. Direct comments regarding this burden estimate or any aspect of this form to the Chief, Administrative Services Division, National Park Service, P.O. Box 37127, Washington, DC 20013-7127; and the Office of Management and Budget, Paperwork Reductions Projects (1024-0018), Washington, DC 20503.

**United States Department of the Interior
National Park Service****National Register of Historic Places
Continuation Sheet**Section number 8 Page 1Goffstown High School
Goffstown (Hillsborough County)
New Hampshire

The Goffstown High School, constructed in 1925, is significant as the town's first high school building erected specifically for that purpose. The building represents an important step in the progress of education in Goffstown from a district to a central philosophy. It has also been an important contributing element to life in Goffstown village for seventy years. The Goffstown High School retains integrity of location, design, setting, materials, workmanship, feeling and association and satisfies Criterion A at the local level. The building's period of significance is 1925-1947.

The High School was constructed in 1925 at a cost of approximately \$20,000. Prior to this time the adjacent White Building served as the consolidated school for grades 1-12. Keys of the new building were turned over to the School Board on Saturday evening, January 31, 1926. When it opened in 1926, the building initially accommodated grades 5-12. In 1936 grades 5 and 6 were transferred from the High School building to the White Building.

As its function would dictate, various changes have been made to the school building over its lifetime. In 1940 school reports indicate that the stage in the assembly hall was enlarged and footlights and a curtain were installed. In 1947 the corridors and stair treads were covered with asphalt tile and the upper corridor and two classrooms were redecorated. At an annual meeting of the School District in 1946 \$84,000 was appropriated for an addition to the High School building with an additional \$50,000 appropriated the following year. An additional warrant in March 1948 finally raised sufficient funds to construct the addition with \$174,000 raised through the sale of bonds. The contract for construction was awarded to the Leon Kesper Company of Manchester and ground was broken on April 28, 1948. As a result of the construction a building on Parker Street (now Reed Street) was moved to Spring Street. The final cost of the addition was \$181,755 which included \$6,081 for alterations to the wing of the original building. The new building, including auditorium, gymnasium and new classrooms, was first occupied in February 1949.

Following the construction of the new high school on Wallace Road in 1965, the former high school building served as the Upper Elementary School. In 1969 various improvements were made to the building including the installation of new outside doors, renovations to the bathrooms, the installation of a new oil burner and the paving of the playground area. Town reports indicate that as of 1970 the building was still without lockers.

During the last school year before it closed in June 1991, the school housed 341 students in Grades 5 and 6. Following the construction of a new school building elsewhere in town, the former High School building was deeded to the Town of Goffstown, but without provisions for its maintenance or reuse. As the building deteriorated due to the effects of clogged roof drains and no heat, the Town sought the assistance of developers but initially found no affordable reuse for the building. As dictated by the town, the building has been renovated to contain 38 units of low income, elderly housing. The project is intended to bridge the gap between traditional affordable elderly housing and more expensive assisted living by letting independent elderly age in place while providing convenient as-needed services.

United States Department of the Interior
National Park Service

National Register of Historic Places Continuation Sheet

Section number 9 Page

Goffstown High School
Goffstown (Hillsborough County)
New Hampshire

BIBLIOGRAPHY

Goffstown Historical Society, Photographic Collection.

Goffstown, New Hampshire Bicentennial 1761-1961. Town of Goffstown, 1961.

Goffstown, Town of, "Goffstown Cornerstones", 1992.

"Heritage Quilt: Goffstown Bicentennial, 1776-1976", 1976.

Sanborn Insurance Maps, Town of Goffstown, 1892, 1898, 1912, 1921. [Microfilm collection, NH Historical Society, Concord, NH].

Town of Goffstown, Annual Reports, various dates. [Goffstown Public Library & Goffstown Historical Society].

Interview, Eleanor Porritt, Goffstown High School Class of 1945 and Goffstown Historical Society, October 1995.

United States Department of the Interior
National Park Service

National Register of Historic Places Continuation Sheet

Section number 10 Page

Goffstown High School
Goffstown (Hillsborough County)
New Hampshire

VERBAL BOUNDARY DESCRIPTION

The nominated property occupies Map 34, Lot 138-1 in the local assessors' records. The total acreage of the property is 1.13 acres and it is bounded on the east by Reed Street and on the south by Mill Street.

BOUNDARY JUSTIFICATION

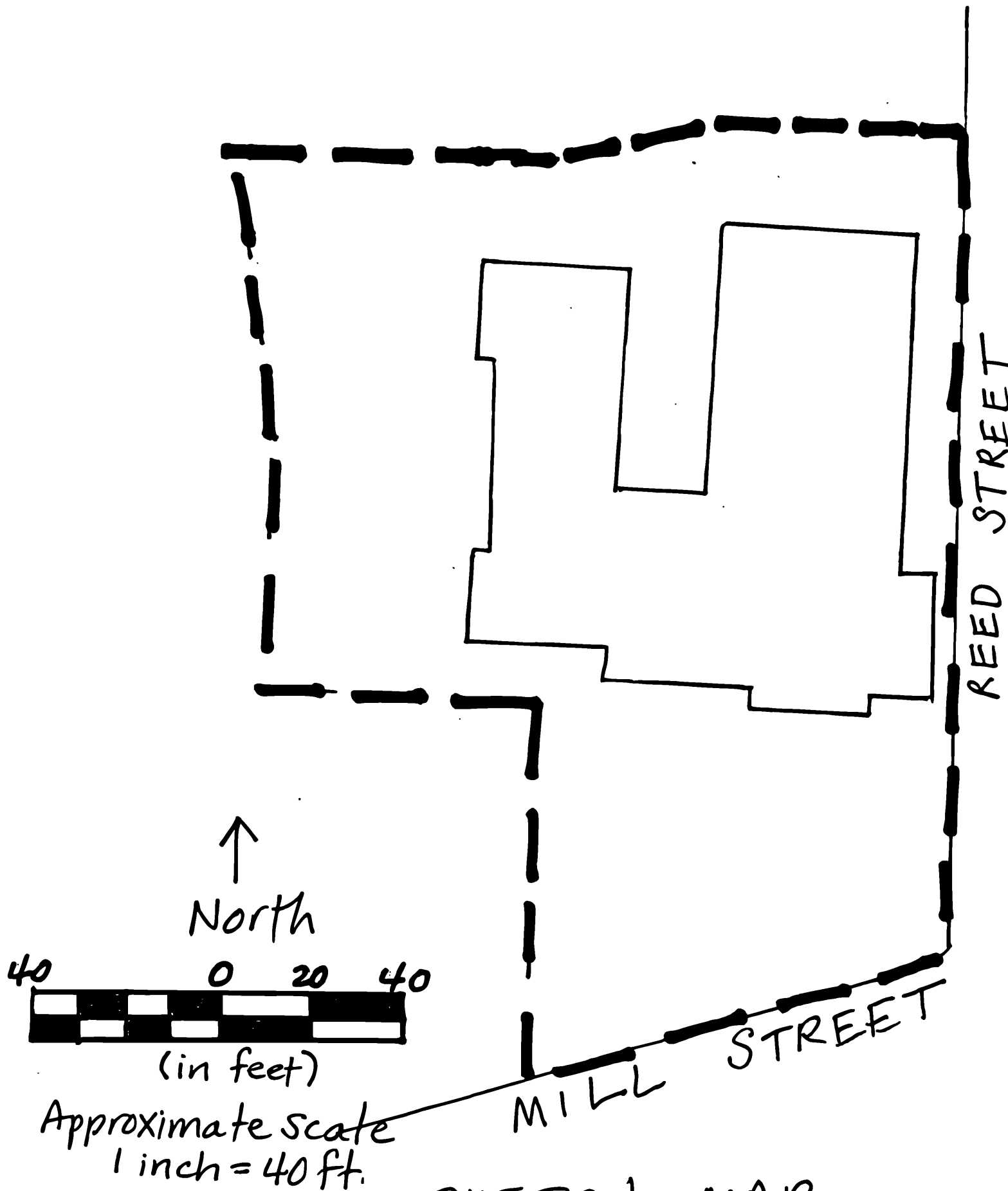
The boundary of the nominated property is drawn to include that acreage which survives from the original parcel and which is eligible for listing on the National Register of Historic Places.

United States Department of the Interior
National Park Service

National Register of Historic Places Continuation Sheet

Goffstown High School
Goffstown (Hillsborough County)
New Hampshire

Section number _____ Page _____



SKETCH MAP
GOFFSTOWN HIGH SCHOOL
TAX MAP 34, LOT 138-1

— — Boundary of nominated property