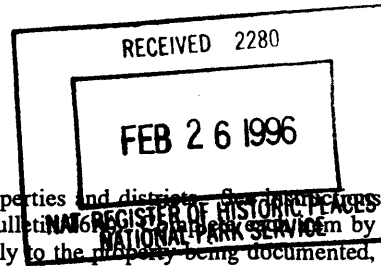


United States Department of the Interior
National Park Service



National Register of Historic Places
Registration Form

This form is for use in nominating or requesting determinations for individual properties and districts. See *How to Complete the National Register of Historic Places Registration Form* (National Register Bulletin 68) for instructions on how to complete this form by marking "x" on the appropriate line or by entering the information requested. If an item does not apply to the property being documented, enter "N/A" for "not applicable." For functions, architectural classification, materials, and areas of significance, enter only categories and subcategories from the instructions. Place additional entries and narrative items on continuation sheets (NPS Form 10-900a). Use a typewriter, word processor, or computer, to complete all items.

1. Name of Property

historic name PRESIDENT'S COTTAGE

other names/site number _____

2. Location

street & number 425 College Avenue N/A not for publication

city or town Oskaloosa N/A vicinity

state Iowa code IA county Mahaska code 123 zip code 52577

3. State/Federal Agency Certification

As the designated authority under the National Historic Preservation Act, as amended, I hereby certify that this nomination request for determination of eligibility) meets the documentation standards for registering properties in the National Register of Historic Places and meets the procedural and professional requirements set forth in 36 CFR Part 60. In my opinion, the property meets does not meet) the National Register criteria. I recommend that this property be considered significant nationally statewide locally. (See continuation sheet for additional comments.)

Patricia Oberkirch DSHPO 2-21-96
Signature of certifying official/Title Date

State or Federal agency and bureau

In my opinion, the property meets does not meet) the National Register criteria. (See continuation sheet for additional comments.)

Signature of certifying official/Title Date

State or Federal agency and bureau

4. National Park Service Certification

I hereby certify that the property is :

- entered in the National Register.
 - See continuation sheet.
- determined eligible for the National Register
 - See continuation sheet
- determined not eligible for the National Register
- removed from the National Register.
- Other, (Explain)

Edson H. Beall
Signature of Keeper

3/28/96
Date of Action

entered in the
National Register.

President's Cottage
Name of Property

Mahaska County, Iowa
County and State

5. Classification

Ownership of Property
(Check as many lines as apply)

Category of Property
(Check only one line)

Number of Resources within Property
(Do not include previously listed resources in the count.)

- private
- public-local
- public-State
- public-Federal

- building(s)
- district
- site
- structure
- object

Contributing	Noncontributing	
<u>1</u>	<u>0</u>	buildings
<u>1</u>		sites
		structures
		objects
<u>2</u>	<u>0</u>	Total

Name of related multiple property listing
(Enter "N/A" if property is not part of a multiple property listing)

Number of contributing resources previously listed in the National Register

The Quaker Testimony in Oskaloosa, Iowa

0

6. Function or Use

Historic Functions
(Enter categories from instructions)

Current Functions
(Enter categories from instructions)

EDUCATION/education-related housing

DOMESTIC/single dwelling

7. Description

Architectural Classification
(Enter categories from instructions)

Materials
(Enter categories from instructions)

N/A

foundation Brick
walls Wood
roof Asphalt
other Glass

Narrative Description

(Describe the historic and current condition of the property on one or more continuation sheets.)

President's Cottage
Name of Property

Mahaska County, Iowa
County and State

8. Statement of Significance

Applicable National Register Criteria

(Mark "x" on one or more lines for the criteria qualifying the property for National Register listing)

- A** Property is associated with events that have made a significant contribution to the broad patterns of our history.
- B** Property is associated with the lives of persons significant in our past.
- C** Property embodies the distinctive characteristics of a type, period, or method of construction or represents the work of a master, or possesses high artistic values, or represents a significant and distinguishable entity whose components lack individual distinction.
- D** Property has yielded, or is likely to yield, information important in prehistory or history.

Criteria Considerations

(Mark "x" on all the lines that apply)

Property is:

- A** owned by a religious institution or used for religious purposes.
- B** removed from its original location.
- C** a birthplace or grave.
- D** a cemetery.
- E** a reconstructed building, object, or structure.
- F** a commemorative property.
- G** less than 50 years of age or achieved significance within the past 50 years.

Areas of Significance

(Enter categories from instructions)

EDUCATION
LANDSCAPE ARCHITECTURE

Period of Significance

1892-1918

Significant Dates

1892

Significant Person

(Complete if Criterion B is marked above)

N/A

Cultural Affiliation

N/A

Architect/Builder

N/A

Narrative Statement of Significance - (Explain the significance of the property on one or more continuation sheets)

9. Major Bibliography References

Bibliography

(Cite the books, articles and other sources used in preparing this form on one or more continuation sheets.)

Previous documentation on file (NPS):

- previous determination of individual listing (36 CFR 67) has been requested
- previously listed in the National Register
- previously determined eligible by the National Record
- designated a National Historic Landmark
- recorded by American Buildings Survey # _____
- recorded by Historic American Engineering Record # _____

Primary location of additional data:

- State Historical Preservation Office
- Other State agency
- Federal agency
- Local government
- University
- Other

Name of repository

President's Cottage
Name of Property

Mahaska County, Iowa
County and State

10. Geographical Data

Acreage of Property Less than one acre

UTM References

(Place additional UTM references on a continuation sheet.)

1 | 15 | 5 29 290 | 45 72 320 |

Zone Easting Northing

2 | | | |

Zone Easting Northing

3 | | | |

Zone Easting Northing

4 | | | |

Verbal Boundary Description

(Describe the boundaries of the property on a continuation sheet)

Boundary Justification

(Explain why the boundaries were selected on a continuation sheet)

11. Form Prepared By

name/title William C. Page, Public Historian; Joanne R. Walroth

organization Oskaloosa Historic Preservation Commission date June 3, 1995

street & number 520 East Sheridan Avenue telephone 515-243-5740; FAX 515-243-7285

city or town Des Moines state Iowa zip code 50313

Additional Documentation

Submit the following items with the completed form:

Continuation Sheets

Maps

A **USGS map** (7.5 or 15 minute series) indicating the property's location.

A **Sketch map** for historic districts and properties having large acreage or numerous resources.

Photographs - Representative **black and white photographs** of the property.

Additional items - (Check with the SHPO or FPO for any additional items)

Property Owner

(Complete this item at the request of SHPO or FPO.)

name James M. / Lois Jean Knutson

street & number 425 College Avenue telephone 515-673-5445

city or town Oskaloosa state Iowa zip code 52557

Paperwork Reduction Act Statement: This information is being collected for applications to the National Register of Historic Places to nominate properties for listing or determine eligibility for listing, to list properties, and to amend existing listings. Response to this request is required to obtain a benefit in accordance with the National Historic Preservation act, as amended (16 U.S.C. 470 et seq.).

Estimated Burden Statement: Public reporting burden for this form is estimated to average 18.1 hours per response including time for reviewing instructions, gathering and maintaining data, and completing and reviewing the form. Direct comments regarding this burden estimate or any aspect of this form to the Chief, Administrative Services Division, National park Service, P.O. Box 37127, Washington, DC 20013-7127; and the Office of Management and Budget, Paperwork Reductions Projects (1024-0018), Washington, DC 20503.

United States Department of the Interior
National Park Service

NATIONAL REGISTER OF HISTORIC PLACES
CONTINUATION SHEET

Section number 7 Page 1

CFN-259-1116

President's Cottage, Mahaska County, Iowa.

GENERAL DESCRIPTION

Sized on a corner lot at the intersection of College Avenue and North E Street, the President's Cottage is a moderately large, 2-1/2 story, frame, single-family dwelling. The residence features a gable-end roof with several intersecting gables, a full width wrap-around porch on the facade and east elevation, and 1/1 double-hung sash windows. The well preserved porch features a hipped roof and deck supported by delicately turned columns and embellished with spindlework.

Influenced by the Queen Anne taste, this house is a relatively large example of the styling in Oskaloosa. Many such houses also remain extant in the community. Although cover-up siding currently clads the exterior of this house and detracts from its visual integrity, original clapboard siding remains intact beneath it.

The President's House currently serves as a private, single-family dwelling.

HOUSE

The building rests on a brick foundation. Of balloon frame construction, the house is clad with cover-up siding over the original clapboard. The roof is covered with asphalt shingles. A brick chimney is situated on the east elevation near the intersection of the east cross gable.

The present visual impression of the President's Cottage is very much as when it was first constructed with the following exceptions. In the summer of 1913, this house was reshingled and the interior remodelled. The old dining room was converted into a library, the kitchen and dish closet were made into a dining room, and a pantry and small closet were converted into the new kitchen. After the building was sold by the college, the interior of the building was again remodelled, probably in the late 1940s. An attached garage is situated at the rear of the house. Covered with a shed roof, this addition was constructed following World War II. The condition of the house is generally fine.

SITE

The President's Cottage stands on two lots and portions of two other lots. The entire site measures 120' x 170' (width by depth). The large size of this site ensures that surrounding properties do not intrude on the President's Cottage.

When Penn College constructed this building in 1892, the institution effectively extended the Yale Row configuration of its campus along College Avenue. This linear arrangement of collegiate buildings arranged adjacent to and fronting a street had already taken shape at Penn College when Main Building was constructed.

United States Department of the Interior
National Park Service

NATIONAL REGISTER OF HISTORIC PLACES CONTINUATION SHEET

Section number 7

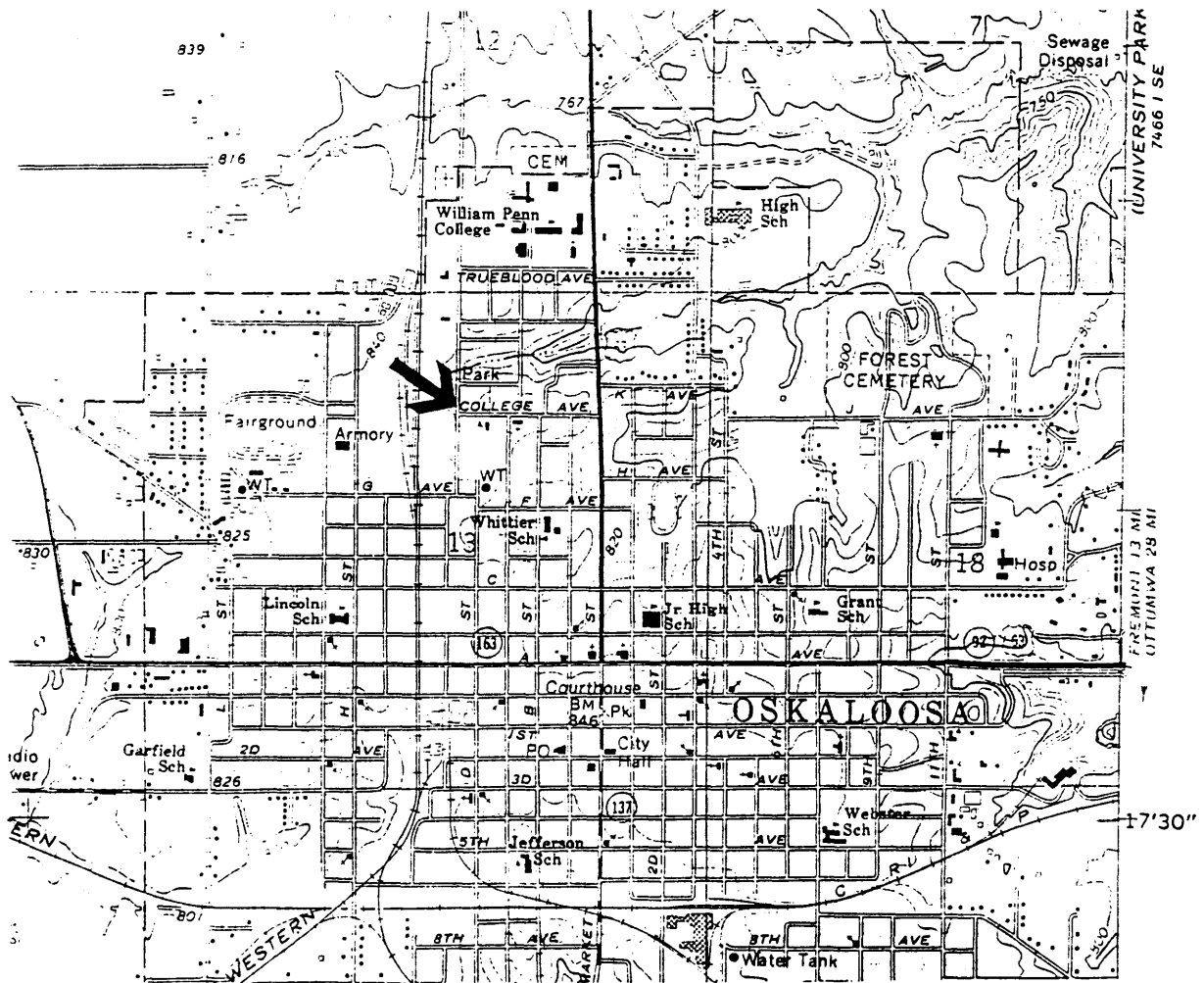
Page 2

CFN-259-1116

President's Cottage, Mahaska County, Iowa.

SITE MAP

ARROW LOCATES PROPERTY



United States Department of the Interior
National Park Service

NATIONAL REGISTER OF HISTORIC PLACES CONTINUATION SHEET

Section number 7

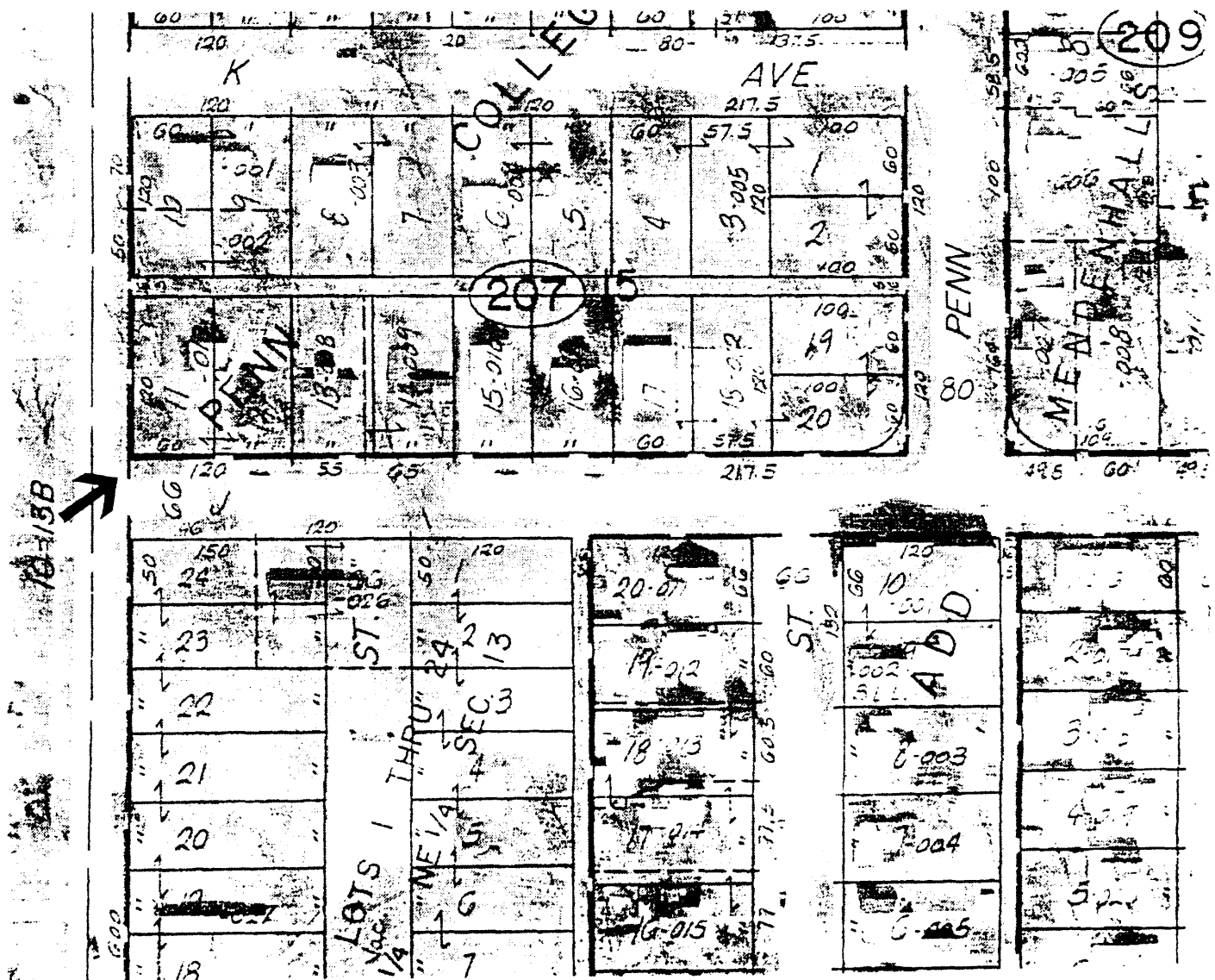
Page 3

CFN-259-1116

President's Cottage, Mahaska County, Iowa.

PLAT MAP

ARROW LOCATES PROPERTY



Source: Oskaloosa City Engineer's Office.



United States Department of the Interior
National Park Service

NATIONAL REGISTER OF HISTORIC PLACES CONTINUATION SHEET

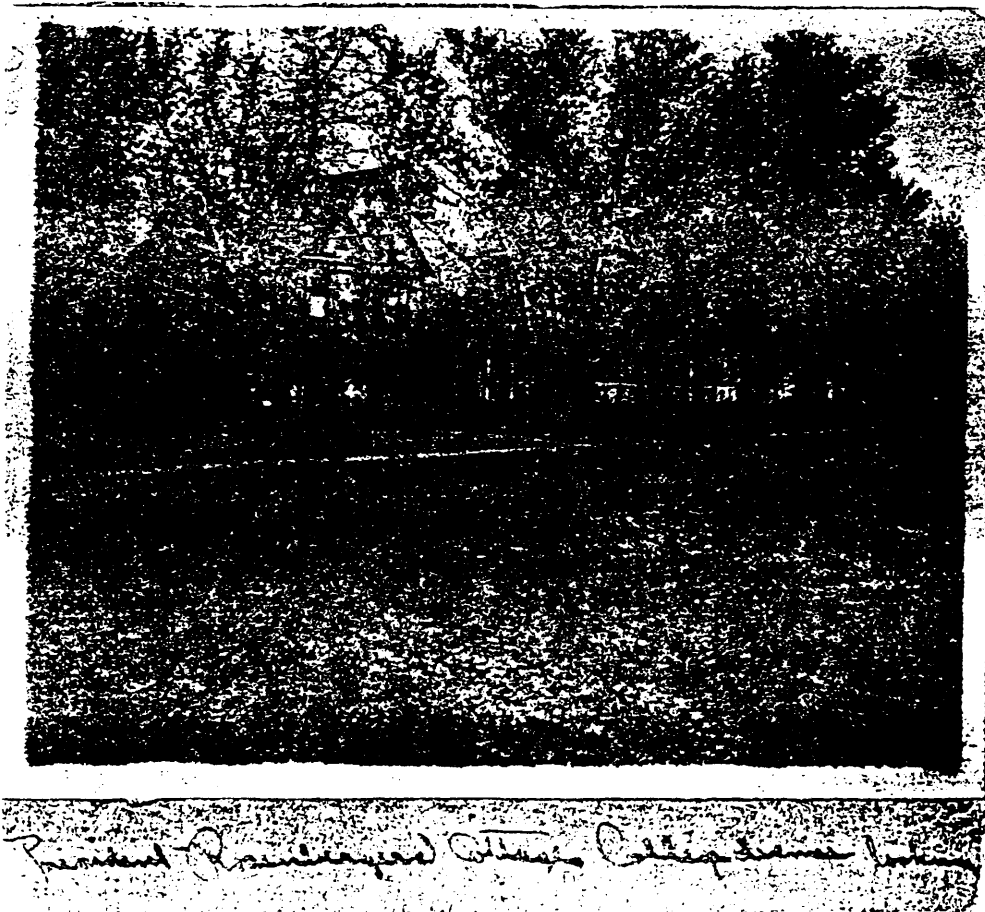
Section number 7 Page 4

CFN-259-1116

President's Cottage, Mahaska County, Iowa.

PRESIDENT'S COTTAGE

HISTORIC PHOTOGRAPH CIRCA 1910 LOOKING NORTHEAST.
PICTURES MATURE SHADE TREES.



United States Department of the Interior
National Park Service

NATIONAL REGISTER OF HISTORIC PLACES CONTINUATION SHEET

Section number 7

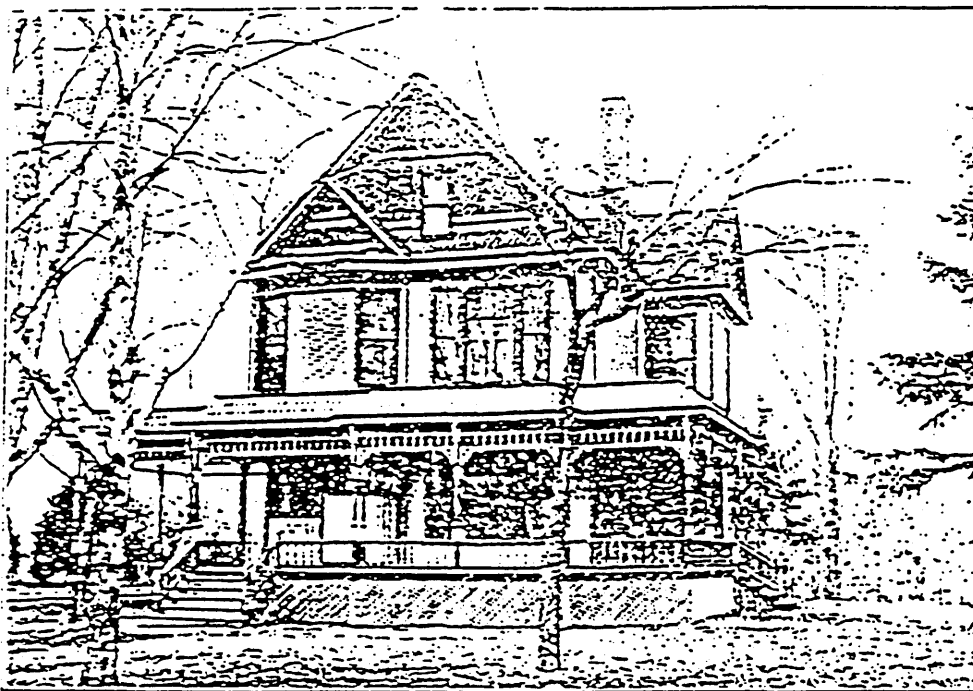
Page 5

CFN-259-1116

President's Cottage, Mahaska County, Iowa.

PRESIDENT'S COTTAGE

CIRCA 1910



THE PRESIDENT'S COTTAGE. BUILT 1892.

United States Department of the Interior
National Park Service

**NATIONAL REGISTER OF HISTORIC PLACES
CONTINUATION SHEET**

Section number 8 Page 6

CFN-259-1116

President's Cottage, Mahaska County, Iowa.

SUMMARY OF SIGNIFICANCE

Constructed in 1892, the President's Cottage possesses historical significance, under National Register Criterion A, because it calls attention to events and patterns associated with Penn College and its administration and faculty within the historic context "The Quaker Testimony in Oskaloosa, Iowa." The erection of the President's Cottage illustrates an improved financial condition at the college and the importance this institution placed on its leadership.

The President's Cottage also possesses landscape architectural significance, under National Register Criterion C, within this historic context. The siting of the building on a corner lot at the end of College Avenue furthered the linear configuration of the college campus. Whether by design or by chance, the Yale Row concept of college design emerged the stronger on the Penn campus because of the selection of this site for the President's Cottage. The landscaping of the cottage's grounds is also thought to have reinforced this linear feeling.

The period of significance, under Criterion A, for the President's Cottage is 1892-1918, the time of its construction and in which presidents of Penn College occupied the building.

The property contains two resources for this nomination--the house, which is contributing, and the site, which is also contributing.

EVENTS AND PATTERNS

Erected by Penn College for the use of its presidents, beginning with Absalom Rosenberger and his family, the first occupants of the home, the construction of this building demonstrates an improved financial capability on the part of the college and a desire to improve its physical plant. It also shows the importance the college placed on its leadership. Other priorities, especially a chapel and a women's dormitory, were listed high on the college's agenda at this time. That the Board of Trustees chose to build the President's Cottage shows the importance they attached to Rosenberger's assumption of the presidency and to the need for a strong, visible leader.

The President's Cottage is additionally significant because it calls attention to historical linkages among the leadership of Quaker institutions of higher learning. Absalom Rosenberger left Penn to serve as president of Whittier College in Whittier, California. His successor, David M. Edwards, later left Penn to serve as president of Earlham College in Richmond, Indiana. Both men and their families resided at the President's Cottage during their administrations at Penn College.

The President's Cottage also obtains significance because of Rosenberger's association with the Oskaloosa Chautauqua, of which he was president. This highlights the contributions Penn personnel have made to the Oskaloosa community over the years and the evangelical role assumed by leading Quakers after the schism of 1877 in the Iowa Yearly Meeting.

United States Department of the Interior
National Park Service

NATIONAL REGISTER OF HISTORIC PLACES
CONTINUATION SHEET

Section number 8 Page 7

CFN-259-1116

President's Cottage, Mahaska County, Iowa.

Although the occupancy of the President's Cottage by Rosenberger and Edwards is documented, the later history of the building is less clear. It is known, for example, that H. Edwin McGrew did not occupy the residence during either of his administrations. Others, including interim presidents Robert L. Kelly and Stephen M. Hadley, each of whom served for only a limited term, were already living in Oskaloosa, and as a consequence, might not have gone through the process of relocating their families to occupy the President's Cottage. Penn College subsequently sold the President's Cottage.

ARCHITECTURE

The roof, fenestration, and porch treatment feature Queen Anne styling. The roof constitutes an important architectural element of the building. It features a front gable with side gables intersecting at lower levels.

The siting of this house obtains significance. It was erected as an integral element on Penn College's old-site campus. As such, the President's Cottage anchored the west end of the "Yale Row" formed along College Avenue. This configuration of collegiate buildings was reinforced by the construction of large and imposing residences along College Avenue, many of which were the homes of prominent Quaker families.

Two historic photographic images of the property, taken circa 1910, picture the President's Cottage and its front yard (see Section 7 Pages 4 and 5). Landscaped with a number of deciduous and coniferous trees, the pictures indicate concern on the part of Penn College for the beautification of the campus. These plantings may well have been a portion of those trees planted adjacent to the sidewalk on the north side of College Avenue pictured in a circa 1910 postcard view of the street (see "The Quaker Testimony in Oskaloosa, Iowa" Multiple Property Documentation Form, Figure 10).

REPRESENTATION IN OTHER CULTURAL RESOURCES SURVEYS

The President's Cottage was surveyed in 1981 as part of the Area XV Regional Planning Commission's then comprehensive cultural resources surveys of Mahaska County. At that time, the Architectural Survey evaluated the building as not eligible for nomination to the National Register, under Criterion C. The building was not identified in the Historical Survey and was not evaluated as a resource associated with Penn College. Since that time, additional information has come to light, contained in the Multiple Property Documentation Form accompanying this nomination, which places this resource in new context.

POTENTIAL FOR HISTORICAL ARCHAEOLOGY

The site's potential for archaeological research is, as yet, unevaluated. Although historical archaeological investigations may uncover traces of construction on the site previous to construction of the President's Cottage, this is unlikely.

United States Department of the Interior
National Park Service

NATIONAL REGISTER OF HISTORIC PLACES CONTINUATION SHEET

Section number 8 Page 8

CFN-259-1116

President's Cottage, Mahaska County, Iowa.

A privy likely stood in the back yard of this property and might, with future research, yield historic archaeological information.

United States Department of the Interior
National Park Service

NATIONAL REGISTER OF HISTORIC PLACES CONTINUATION SHEET

Section number 9

Page 9

CFN-259-1116

President's Cottage, Mahaska County, Iowa.

BIBLIOGRAPHY

PRIMARY

"College Improvements," *Penn Chronicle*, October 1, 1913, p. 1, col. 1.

Quaker Collection, Wilcox Library, William Penn College, Oskaloosa, Iowa.

Sanborn Fire Insurance Maps of 1896, 1902.

SECONDARY

Naumann, Molly Myers; *Architectural Survey of Oskaloosa, Iowa*; Report prepared by the Area XV Regional Planning Commission and on file at the State Historical Society of Iowa; 1981.

Page, William C.; *Historical Survey of Mahaska County, Iowa*; Report prepared by the Area XV Regional Planning Commission and on file at the State Historical Society of Iowa; 1981.

Page, William C., and Joanne R. Walroth; *Intensive Cultural Resources Survey of the Quaker Testimony in Oskaloosa, also including the Chicago, Rock Island, & Pacific Railroad Area*; Report prepared for and on file at the Oskaloosa Historic Preservation Commission and State Historical Society of Iowa, Des Moines; 1992.

ORAL INFORMANTS

Martha Berry Johnson, interview with Joanne R. Walroth, February 7, 1992.

Marion Rains, interview with Joanne R. Walroth, February 6, 1992.

Robert Pierson, interview with Joanne R. Walroth, June 11, 1992.

United States Department of the Interior
National Park Service

NATIONAL REGISTER OF HISTORIC PLACES CONTINUATION SHEET

Section number 10 Page 10

CFN-259-1116

President's Cottage, Mahaska County, Iowa.

VERBAL BOUNDARY DESCRIPTION

Lot 11, Lot 12, and the south 50 feet of Lots 9 and 10, all in Block 15 of Penn College Addition to the City of Oskaloosa, Iowa.

BOUNDARY JUSTIFICATION

The National Register boundary contains all land associated historically with this resource.

United States Department of the Interior
National Park Service

NATIONAL REGISTER OF HISTORIC PLACES CONTINUATION SHEET

Section number 10 Page 11

CFN-259-1116

President's Cottage, Mahaska County, Iowa.

LIST OF PHOTOGRAPHS

1. President's Cottage
425 College Avenue
Oskaloosa, IA 52557
Looking northwest
Patricia Pierce Patterson, Photographer
April 24, 1994

2. President's Cottage
425 College Avenue
Oskaloosa, IA 52557
Looking northeast
Patricia Pierce Patterson, Photographer
April 24, 1994

3. President's Cottage
425 College Avenue
Oskaloosa, IA 52557
Looking southeast
Patricia Pierce Patterson, Photographer
April 24, 1994