



GRANT CITY PARK

9505/4/2

NSHS # PRO4-023

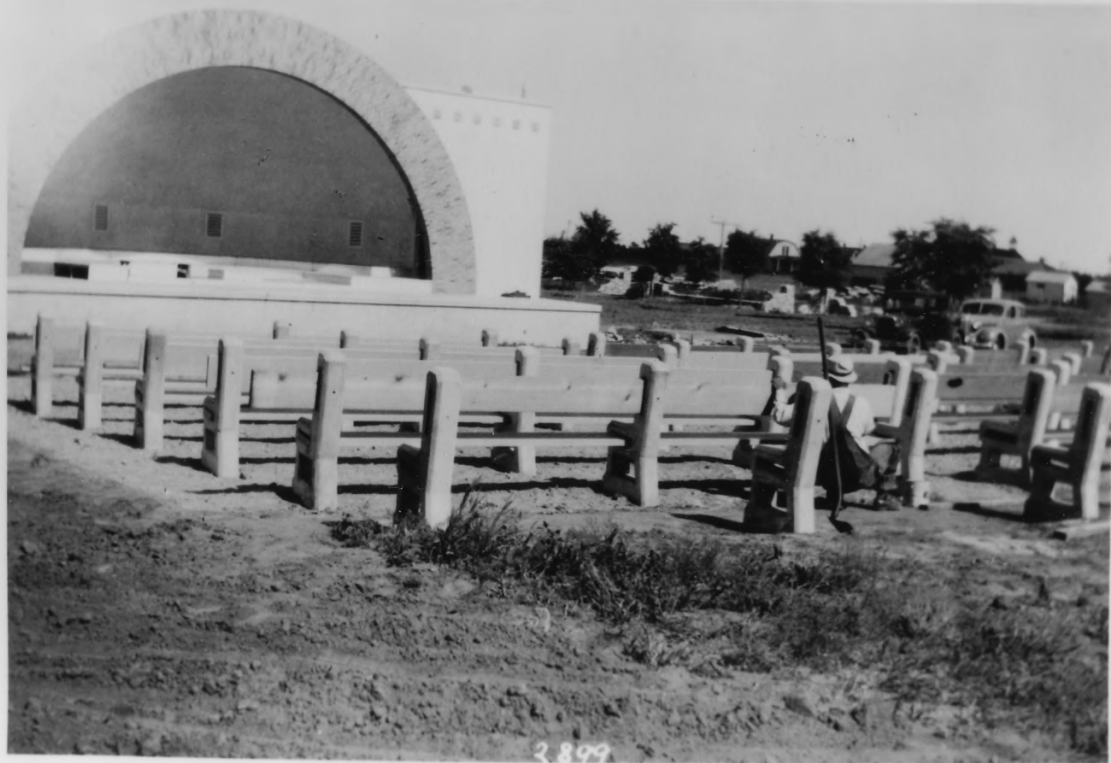
GRANT, PERKINS COUNTY, Nebraska

photo by BILL CALLAHAN, MAY 1995 (NSHS: 9505/4:2)

VIEW looking east showing band shell, benches
and drinking fountain

photo # 1 OF 10

1937



2899

GRANT CITY PARK

→ SE

NEHRS # PR04-023

GRANT, PERKINS COUNTY NEBRASKA

HISTORIC VIEW C. 1937 (NSHS: H6735-570A)

photographer unknown

VIEW LOOKING southeast showing band shell,
benches

PHOTO # 2 OF 10



GRANT CITY PARK

NEHBS # PR04-023

GRANT, PERKINS County, Nebraska

photo by VERN REZAC, MARCH, 1995 (NSHS: H673.5-5705)

VIEW LOOKING Northeast

showing Entrance arch, benches, and bandshell

photo # 3 OF 10



GRANT CITY PARK

NEHBS # PRO4-023

GRANT, PERKINS County Nebraska

photo by Bill Callahan, May 1995 (NHS: 9505/4:9)

VIEW LOOKING EAST

showing west entrance posts and band shell

photo # 4 OF 10



GRANT CITY PARK

9505/4:5

NEHBS # PRO4-023

GRANT, PERKINS COUNTY Nebraska

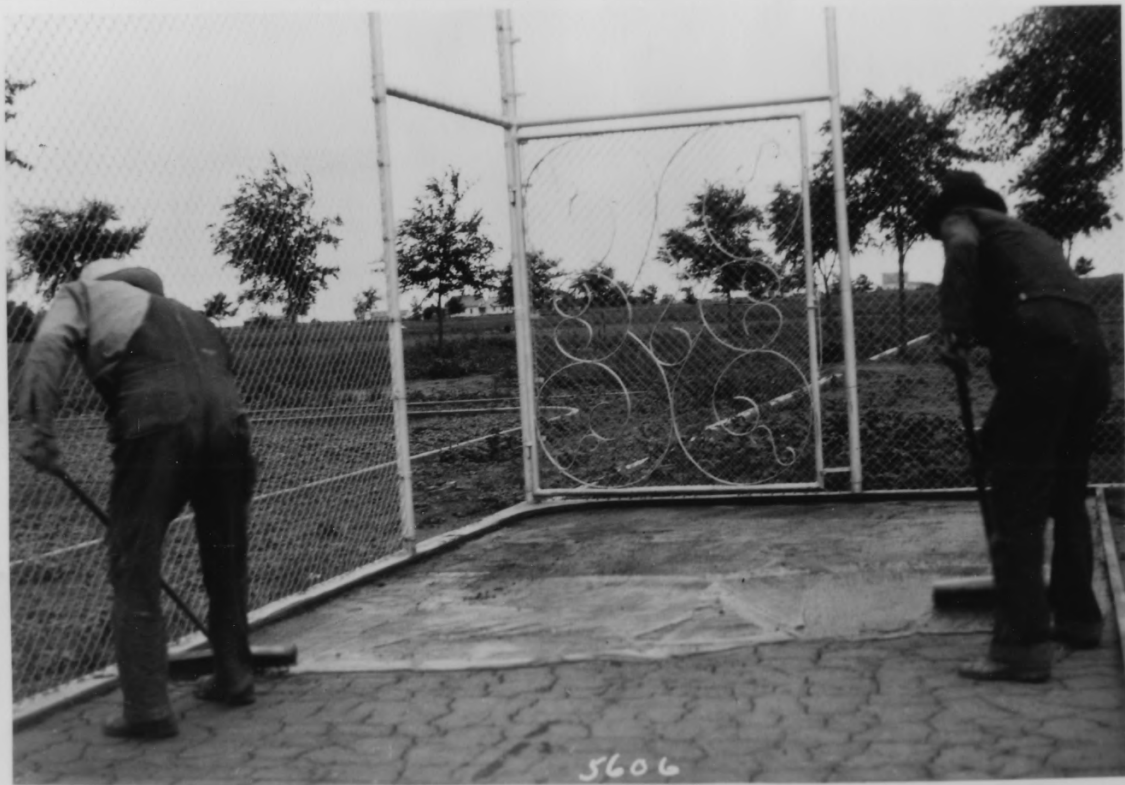
photo by BILL CALLAHAN MAY, 1995 (9505/4:5)

VIEW LOOKING SOUTH

SHOWING ROCK COVE

photo # 5 OF 10

1937



PRO4-023)

GRANT CITY PARK

NEHHS # PRO4-023

GRANT, PERKINS COUNTY, Nebraska

HISTORIC VIEW C-1937 (NEHHS: H073.5-5700)

VIEW LOOKING EAST showing WPA workers
Furness Court & entrance gate

photo # 6 OF 10



GRANT CITY PARK

NEHRS # PROJ-023

GRANT, PERKINS COUNTY, NEBRASKA

PHOTO BY VERN REZAC, MARCH 1995 (NHS: H673.5-5707)

VIEW LOOKING EAST

SHOWING ROCK GARDEN, BENCHES & TENNIS COURT

PHOTO # 7 OF 10



GRANT CITY PARK

NEHBS # PRO4-023

GRANT, PERKINS COUNTY NEBRASKA

photo by VERN REZAL, March 1995 (NEHS: H673.5-5709)

VIEW LOOKING NORTH

SHOWING SOUTH ENTRANCE POSTS/WALL, and
ROCK Garden

PHOTO # 8 OF 10



GRANT CITY PARK

NeHSS # PROJ-023

GRANT, PERKINS COUNTY, NEBRASKA

photo by VERN REZAC, MARCH 1995 (NSHS: H673.5-5708)

VIEW LOOKING EAST

showing elm trees along 8th STREET perimeter

photo # 9 OF 10

1027



2899

PROJ-023

GRANT CITY PARK

NEHBS # PROJ-023

GRANT, PERKINS COUNTY NEBRASKA

HISTORIC VIEW C. 1937 (NSHS: H673.5-5710)

photographer unknown

view looking east,

showing WPA workers planting trees

photo # 10 OF 10