



1. Alexander G. ZELACHOWSKI Honors and Store

2. Puerto de Luna, NM

3. #1



1. Alexander G RZELACHOLSKI House and Store

2. Puerto de Luna, NM

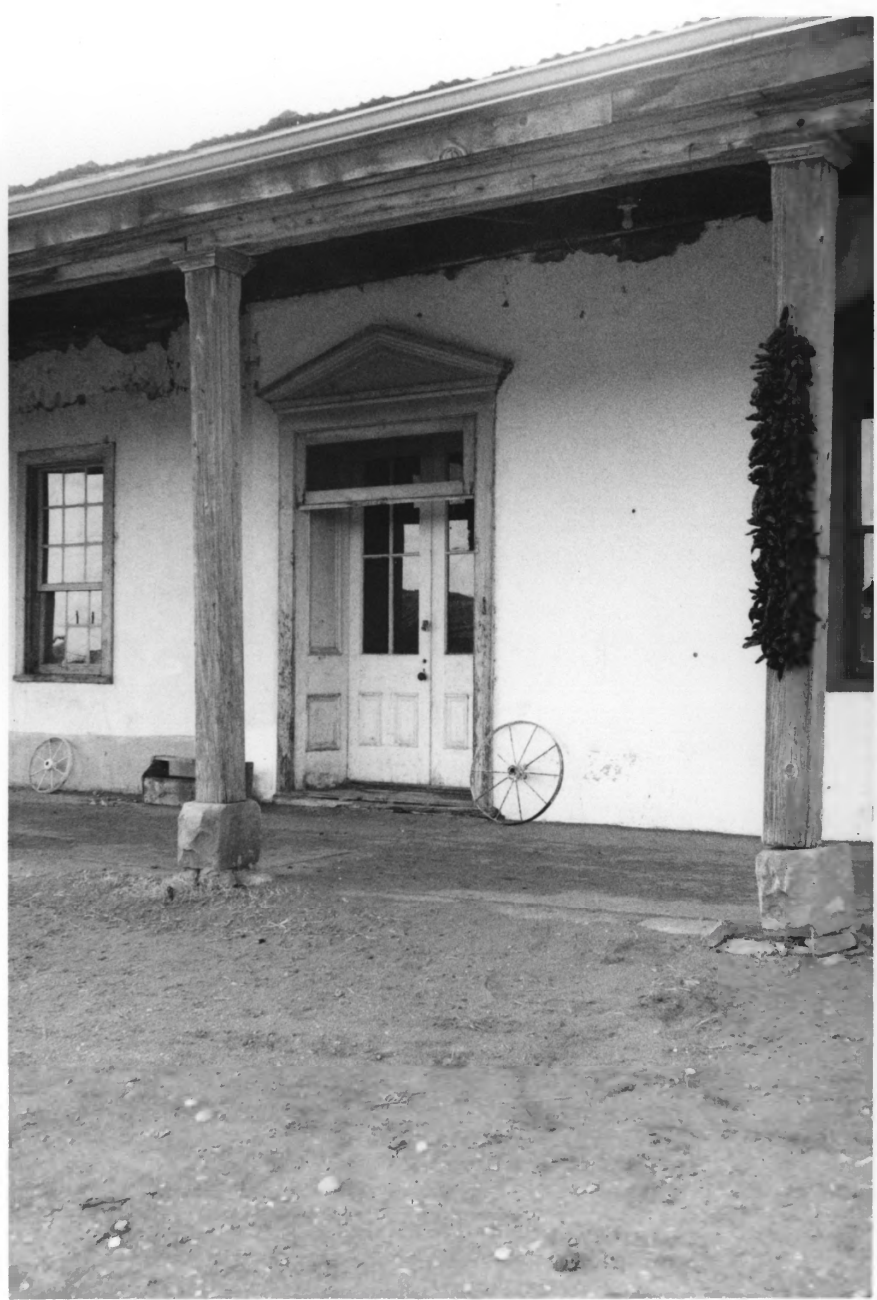
3. #2



1. Alexander GRZEŁACHOŃSKI House and Store

2. Puerto de Luna, NM

3



1. Alexander GRZEŁAŁOWSKI Hore and Store

2. Puerto de Luna, Nm

7. #4



1. Alexander GRZELACHOWSKI to use and store

2. Puerto de Luna, NM

2. # 5



1. Alexander GRZELACHOWSKI House and store

2. Puerto de Luna, NM

3. # 6



1. Alexander Graze \in Locust Creek House and Store

2. Puerto de Luna, NM

7. # 7



1. Alexander GRZE LACTOWSKI Ho use and store

2. Puerto de Luna, Nm

7. #8



1. Alexandre GRZELACHOWSKI to use and store

2. Puerto de Luna, Nm

7. #9



1. Alexander GAZZELACHTO WSKI House and Store

2. Puerto de Luna; NM

7. # 10



1. Alexander GRELACHOSKI its use and store

2. Puer to de Luna, NM

3. # 11



1. Alexander GRZELACZOSKI to use and store
2. Puerto de Luna, NM
7. # 12



1. Aleksandra GRZELACHOWSKI House
and
Store
2. Puerto de Luna, NM Store
3. # 13



1. Alexander GRZEZLAŁOWSKI. House
and Store

2. Puerto de Luna, Nm

7. # 14



1. Alexander GRZEZLA CHOLSKI House
and store

2. Puente de Luna, NM

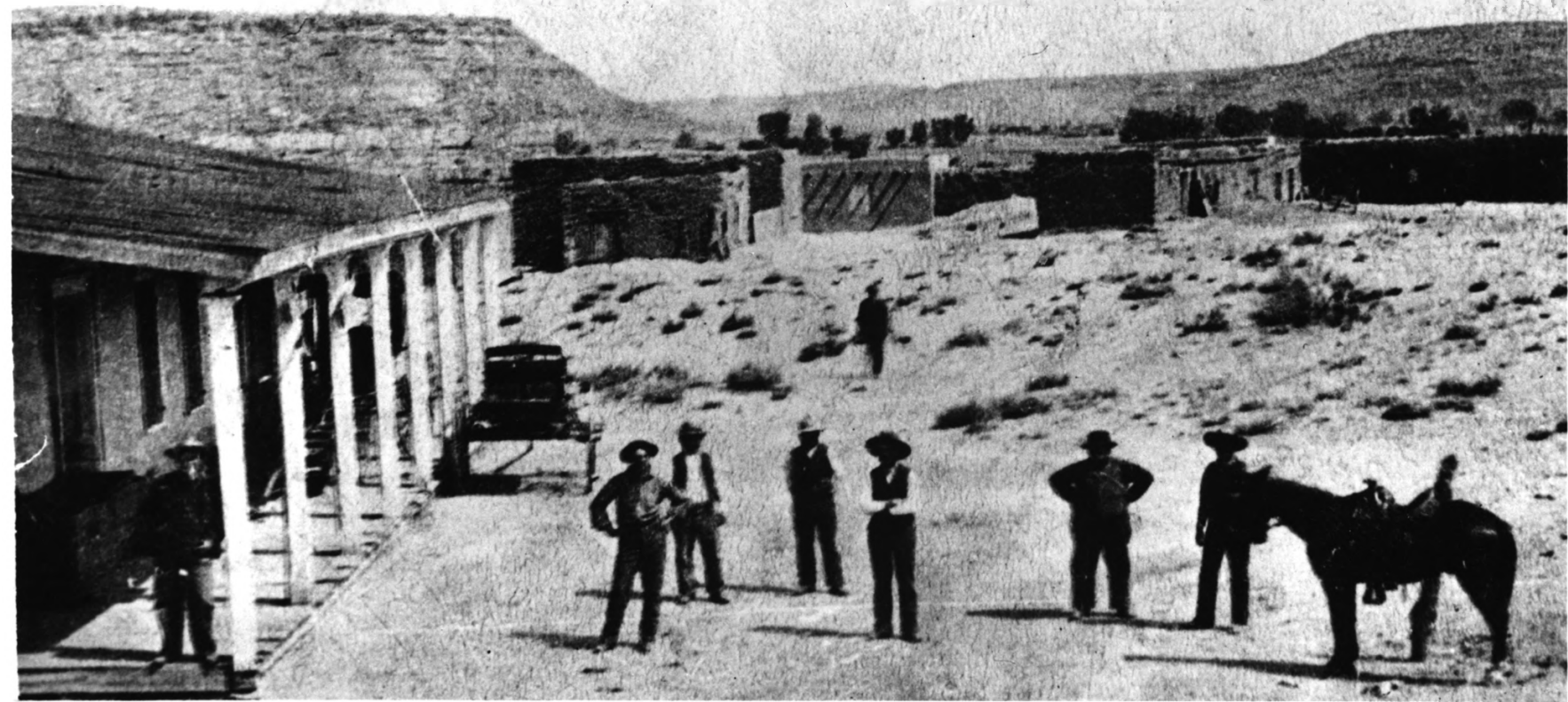
7. #15



1. Alexander GRZELACITOCUSICA House and store

2. Puerto de Luna, NM

7. # 16



Puerto de Luna, New Mexico Territory, at time of Lincoln County War(1876-78). Alexander ~~B~~ Grzelachowski's general store on left. Man wearing derby hat (2d from right) is believed to be Grzelachowski. (Courtesy of granddaughter Oma Gallegos).

1. Alexander GRZELACHOWSKI House and Store

2. Puerto de Luna, NM

7. # 17



Wedding Reception (1899) of Emma Grzelachowski and Alfredo Chavez at home built by Alexander Grzelachowski in Puerto de Luna, New Mexico Territory. (Seated from Right): Refugio Letestue Chavez, mother of the Groom; Secundina Cde Baca Grzelachowski, mother of the bride; Adelina Grzelachowski Hinojos, sister and matron of honor; Adelina's husband Mariano, best man. (Photograph of original made in December 1984).

1. Alexander GRZELACHOWSKI No use and store

2. Puente de Luna, NM

7. #18