



Black  
Lantern  
Inn  
1863  
*Poling & Sonny*

Montgomery House

Montgomery, Franklin Cty, VT.

Deborah Noble

3/91

Vt. Division for Historic Preservation

NE, main block

Photo 1



Montgomery House

Montgomery, Franklin Cty, VT.

Deborah Noble

3/91

Vt. Division for Historic Preservation

E, detail entrance

Photo 2





Montgomery House

Montgomery, Franklin Cty, Vt.

Deborah Noble

3/91

Vt. Division for Historic Preservation

NW, eaves detail main block

Photo 3



Montgomery House

Montgomery, Franklin Cty, VT

Deborah Noble

3/91

Vt. Division for Historic Preservation

NE, rear wing

Photo 4





Montgomery House

Montgomery, Franklin Cty., Vt.

Deborah Noble

3/91

Vt. Division for Historic Preservation

NE, rear ell

Photo 5



Montgomery House

Montgomery, Franklin Cty, Vt.

Deborah Noble

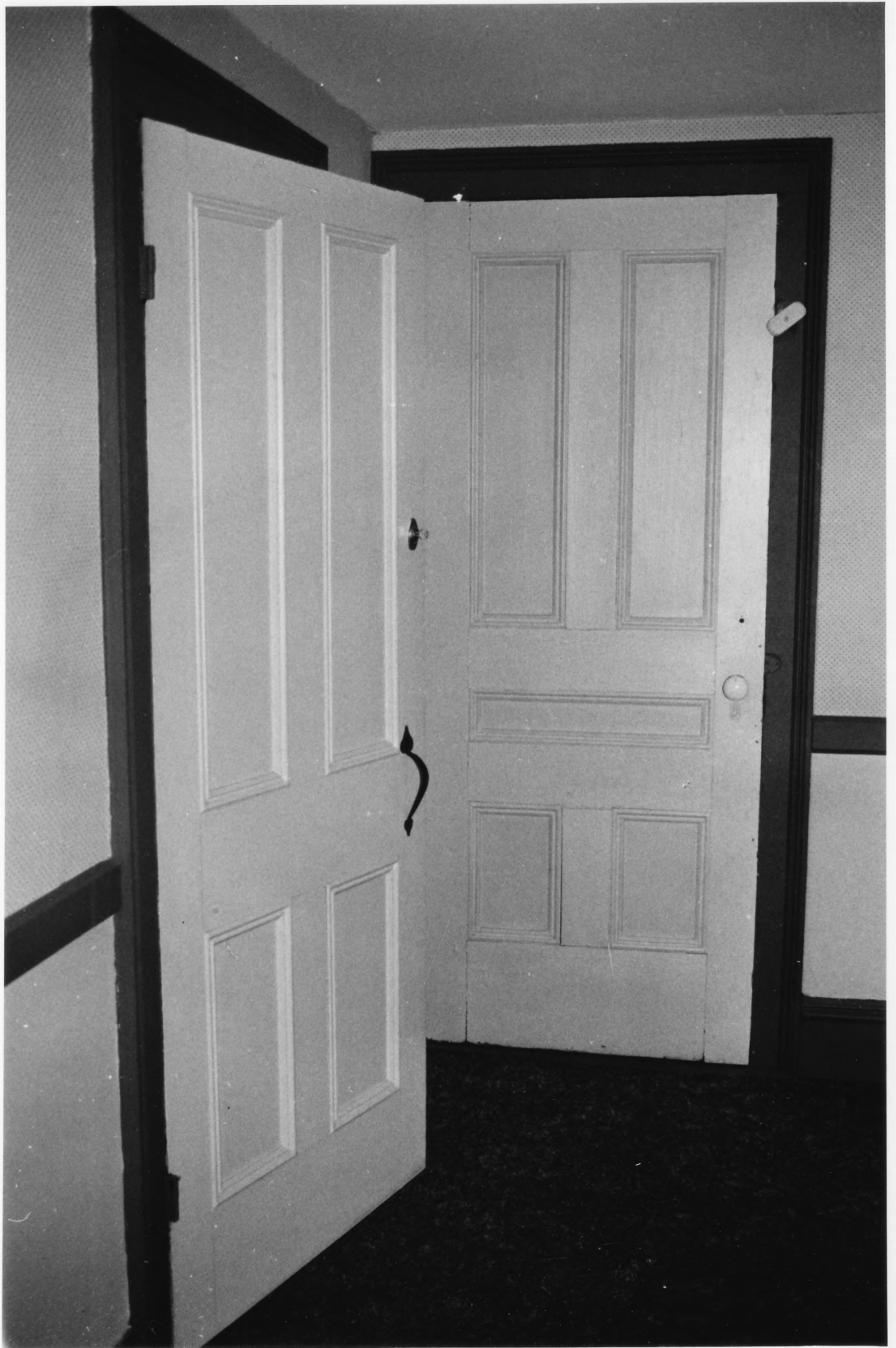
3/91

Vt. Division for Historic Preservation

SE, staircase detail, main block

Photo 6





Montgomery House

Montgomery, Franklin Cty, Vt.

Deborah Noble

3/91

Vt. Division for Historic Preservation

W, interior doors, main block

Photo 7

The Mansfield  
House

Montgomery, Vermont



Montgomery House

Montgomery, Franklin Cty, VT.

Deborah Noble

3/91

Vt. Division for Historic Preservation

NE, Historic photo c. 1915

Photo 8



# MANSFIELD HOUSE

S. M. COAN, Proprietor

Five miles from East Berkshire C. V. R. Station.  
Fine Drives, Wheeling, Boating, Fishing; Trout River  
thirty rods from Mansfield House, and lots of Trout  
Brooks. One-half mile to Gates' Falls, three miles to  
Black Falls. Two Churches, Episcopalian and Methodist.  
Two mails a day . . . . .

---

Board, \$1.00 to \$2.00 per Day      \$6.00 to \$10.00 per Week

Special Rates to Families, \$5.00 to \$9.00

Parties will be met at Station if Notified

GOOD TABLE

LIVERY IN CONNECTION

*MONTGOMERY,*

*FRANKLIN  
COUNTY*

*VERMONT*

Montgomery House

Montgomery, Franklin Cty, VT

Deborah Noble

3/91

Vt. Division for Historic Preservation

historic ad G. 1915

Photo 9