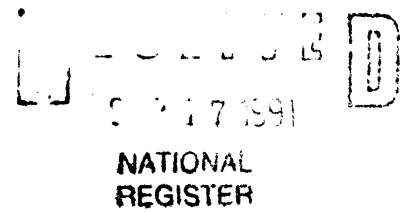


1574

NPS Form 10-900
(Rev. 8-86)

OMB No. 1024-0018

United States Department of the Interior
National Park Service



NATIONAL REGISTER OF HISTORIC PLACES
REGISTRATION FORM

=====

1. Name of Property

=====

Historic name: Firehouse #3

other name/site number: Engine Co. #3 Firehouse

=====

2. Location

=====

street & number: 1215 19th Street

not for publication: NA

city/town: Sacramento

vicinity: _

state: CA county: Sacramento

code: 067

zip code: 95814

=====

3. Classification

=====

Ownership of Property: private

Category of Property: building

Number of Resources within Property:

Contributing	Noncontributing	
__1__	_____	buildings
_____	_____	sites
_____	_____	structures
_____	_____	objects
__1__	__0__	Total

Number of contributing resources previously listed in the National Register: __0__

Name of related multiple property listing: NA

4. State/Federal Agency Certification

As the designated authority under the National Historic Preservation Act of 1986, as amended, I hereby certify that this x nomination request for determination of eligibility meets the documentation standards for registering properties in the National Register of Historic Places and meets the procedural and professional requirements set forth in 36 CFR Part 60. In my opinion, the property x meets does not meet the National Register Criteria. See continuation sheet.

Kathryn Guathieri

9-11-91

Signature of certifying official

Date

California Office of Historic Preservation State or Federal agency and bureau

In my opinion, the property meets does not meet the National Register criteria. See continuation sheet.

Signature of commenting or other official

Date

State or Federal agency and bureau

5. National Park Service Certification

I, hereby certify that this property is:

entered in the National Register See continuation sheet.

Autawelt Lee

10/29/91

determined eligible for the National Register See continuation sheet.

determined not eligible for the National Register

removed from the National Register

other (explain):

Signature of Keeper

Date of Action

6. Function or Use

Historic: Government

Sub: Fire Station

Current : Commerce/Trade Commerce/Trade

Sub: Professional Restaurant

7. Description

Architectural Classification: Classical Revival

Other Description: _____

Materials: foundation: brick roof: asphalt
walls: brick other: sandstone
granite

Describe present and historic physical appearance. X See continuation sheet.

8. Statement of Significance

Certifying official has considered the significance of this property in relation to other properties: locally .

Applicable National Register Criteria: A, C

Criteria Considerations (Exceptions) : NA

Areas of Significance: Architecture
Other: Community Service

Period(s) of Significance: 1893-1941

Significant Dates : 1893 _____

Significant Person(s): NA

Cultural Affiliation: NA

Architect/Builder: unknown

State significance of property, and justify criteria, criteria considerations, and areas and periods of significance noted above. X See continuation sheet.

=====

9. Major Bibliographical References

=====

X See continuation sheet.

Previous documentation on file (NPS):

- x preliminary determination of individual listing (36 CFR 67) has been requested.
- previously listed in the National Register
- previously determined eligible by the National Register
- designated a National Historic Landmark
- recorded by Historic American Buildings Survey # _____
- recorded by Historic American Engineering Record # _____

Primary Location of Additional Data:

- x State historic preservation office
- Other state agency
- Federal agency
- Local government
- University
- Other -- Specify Repository: _____

=====

10. Geographical Data

=====

Acreage of Property: < 1 acre

UTM References: Zone Easting Northing Zone Easting Northing

A	10	632320	4270430	B	_____	_____
C	_____	_____	_____	D	_____	_____

____ See continuation sheet.

Verbal Boundary Description: The south one-half of Lot 1 in the Block bounded by 19th, 20th, "L" and "M" Streets (Capitol Avenue) of the City of Sacramento, according to the official plat thereof.

Boundary Justification: The boundary encompasses the land that has historically been associated with the fire station.

=====

11. Form Prepared By

=====

Name/Title: Stephen R. Cuddy/Principal; OHP revisions, 7/91

Organization: McAuliffe Cuddy Associates Date: Sept. 1, 1990

Street & Number: 1215 19th Street Telephone: (916) 446-0170

City or Town: Sacramento State: CA ZIP: 95814

United States Department of the Interior
National Park Service

NATIONAL REGISTER OF HISTORIC PLACES
CONTINUATION SHEET

Section number 7

FIREHOUSE #3

Page 1

=====
This rectangular brick structure was originally constructed as a fire station in 1893. It is approximately 59' x 67' and over two stories in height. The structure employs classical design elements in its symmetry, form, pediments and decoration. The building is sited in the periphery of downtown Sacramento and is within a mixed commercial and residential area.

The entry facade contains the building's primary design interest. Two pedimented bays, two stories in height, project slightly from the facade, flanked at the second story level by recessed blind arches. Small gables face the projecting corner piers. The second story portions of the pilaster facings contain tall, very narrow recessed panels. The two bays are surmounted and joined by a brick parapet with a decorative horizontal banding of stone and brick.

A frieze banding, punctuated by a series of small, rusticated stones, extends across the facade below the projecting cornice. Each of the bays contains three arched windows on the second floor above a projecting belt course. Rusticated stone blocks are used for decorative accents in arches between windows; there is horizontal banding beneath the frieze, as parapet cornice capping, and as window sills. Carved stone accents the second floor corners of the facade bays, and figurative sculptures featuring fire fighting themes are mounted in the pediments.

The present door configuration on the main elevation is the result of a recent rehabilitation that has been certified by the National Park Service. The arrangement consists of two large double doors, one single door between the double doors, a single door at the north end and a window at the south end. This arrangement was based on historic photos and replaced a non-historic configuration existing prior to the rehab.

Both side elevations are divided vertically by shallow, two story projecting piers, and horizontally by belt courses of brick between the floors. Arched windows penetrate wall surfaces between the divisions.

The rear elevation is divided only vertically by the tall, shallow piers. It is also topped by a stepped parapet, and shallow-arched windows are set into the surface between the dividing strips. A projecting course of brick encircles the top of the structure.

The interior contains four wood turned columns that structurally divide the building east to west. The roof structure is constructed of heavy timber trusses that span the entire width of the building. No other significant interior features remain.

United States Department of the Interior
National Park Service

NATIONAL REGISTER OF HISTORIC PLACES
CONTINUATION SHEET

Section number 8

Firehouse #3

Page 1

Firehouse #3 possesses both architectural and historical significance. The high quality of its brick masonry work and the finely detailed ornamentation are outstanding within the context of the city's nineteenth century building stock.

Engine Company #3 was originally formed in 1851 and evidently went out of service when the department reorganized in 1872. The Company was placed back in service April 1, 1888, and was located at the northwest corner of 19th and L Streets. At this time it had a new Clapp and Jones engine and a new horse cart. In 1891 this company moved to the northwest corner of 24th and N Streets. The company remained there until 1893 when it was moved to the east side of 19th Street between L Street and Capitol Avenue. By 1923 all the equipment of the department was motor-driven with the latest type of hose and ladder trucks, nozzle hoist derricks, high-power pumps and other apparatus. Engine Company #3 was the oldest fire station in Sacramento still in operation when it was closed in 1982, after 89 years of consecutive service. Today, the building is one of only two nineteenth century fire stations extant within the city.

The eclectic structure is an unusually handsome design for so functional a building. The classically inspired pediments with the fire department symbols and the finely decorated frieze areas are among the city's better small-scaled examples of such detailing. The rusticated stonework details suggest Romanesque Revival themes. This mixture of modes is representative of this era although these types of interpretations of classical motifs are not widely represented in Sacramento until after the turn of the century.

In the early 1980s a survey conducted of Sacramento's historic resources indicated that this building was National Register eligible within the local context. At that time the station was still functioning, providing fire protection to the city west of Alhambra Blvd. The period of significance for the property has been arbitrarily ended at 1941, however, because exceptional significance is not apparent.

United States Department of the Interior
National Park Service

NATIONAL REGISTER OF HISTORIC PLACES
CONTINUATION SHEET

Section number 9

Firehouse #3

Page 1

=====
California Inventory of Historic Resources, 1981.
Davis, Winfield, An Illustrated History of Sacramento County, CA, 1890.
Reed, Walter, A History of Sacramento County California with
Biographical Sketches, 1923.
Sacramento Bee, 1893 (copy without precise date); Dec. 16, 1984; May 30,
1985; Nov. 27, 1986.

IMPORTANCE

OLD CITY

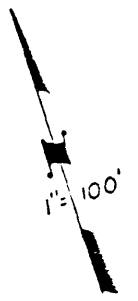
(Firehouse #3
1215 19th St.
Sacramento, CA

Tax Area Code

7-14

08

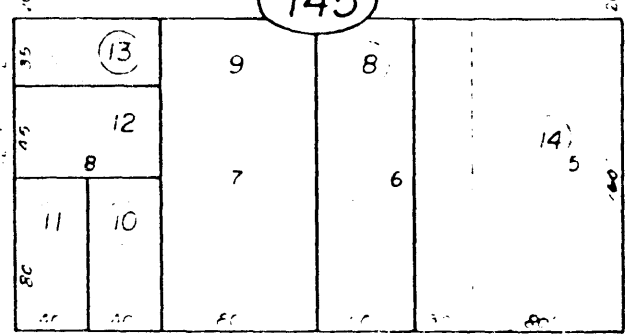
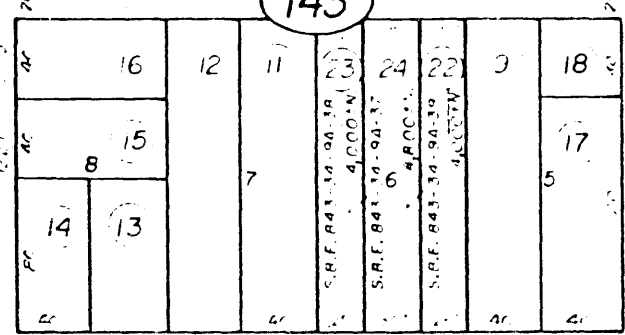
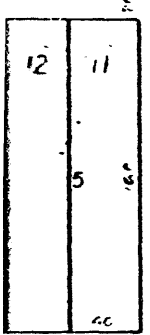
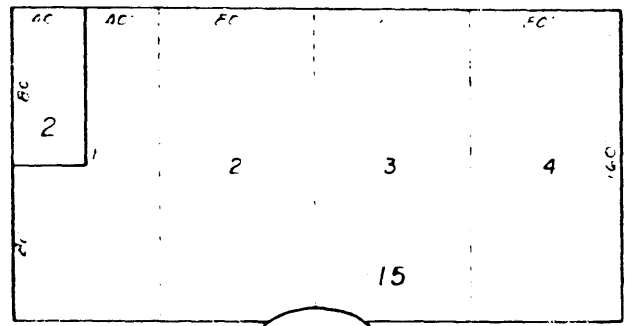
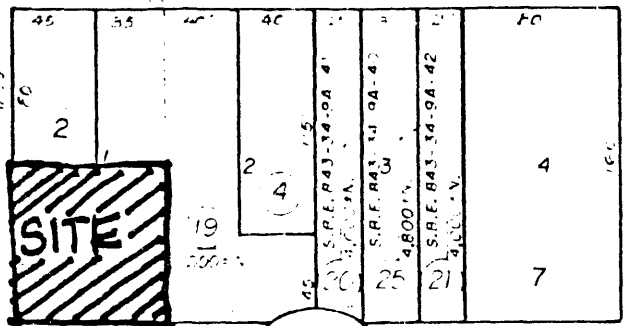
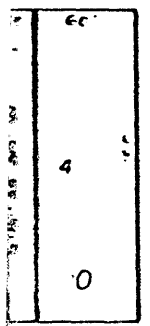
L ST. E



19th ST. E

20th ST.

21st ST. E



143

145

CAPITOL AVE. E

15

