



BACKBONE  
STATE  
PARK

6 Backbone state Pan/c: A a B

A black and white photograph of a stone archway. The archway is constructed from large, rough-hewn stones. In the center of the arch, there is a dark rectangular sign with the words "THE BACKBONE" written in white, uppercase, sans-serif font. The archway is set in a wooded area with bare trees in the background and a light-colored ground in the foreground.

THE  
BACKBONE

7. Bechthold's state park is AAA BB



8. Badelone Start Run K: A A B



9 Pandemonium state panic: ~~think~~ B





10 Backbone State Park : Ar 10 B



11. B a clk b m s t a t a : P a n k : A m e B



12. Back to Back: A and B



13. Back to back in Air and B

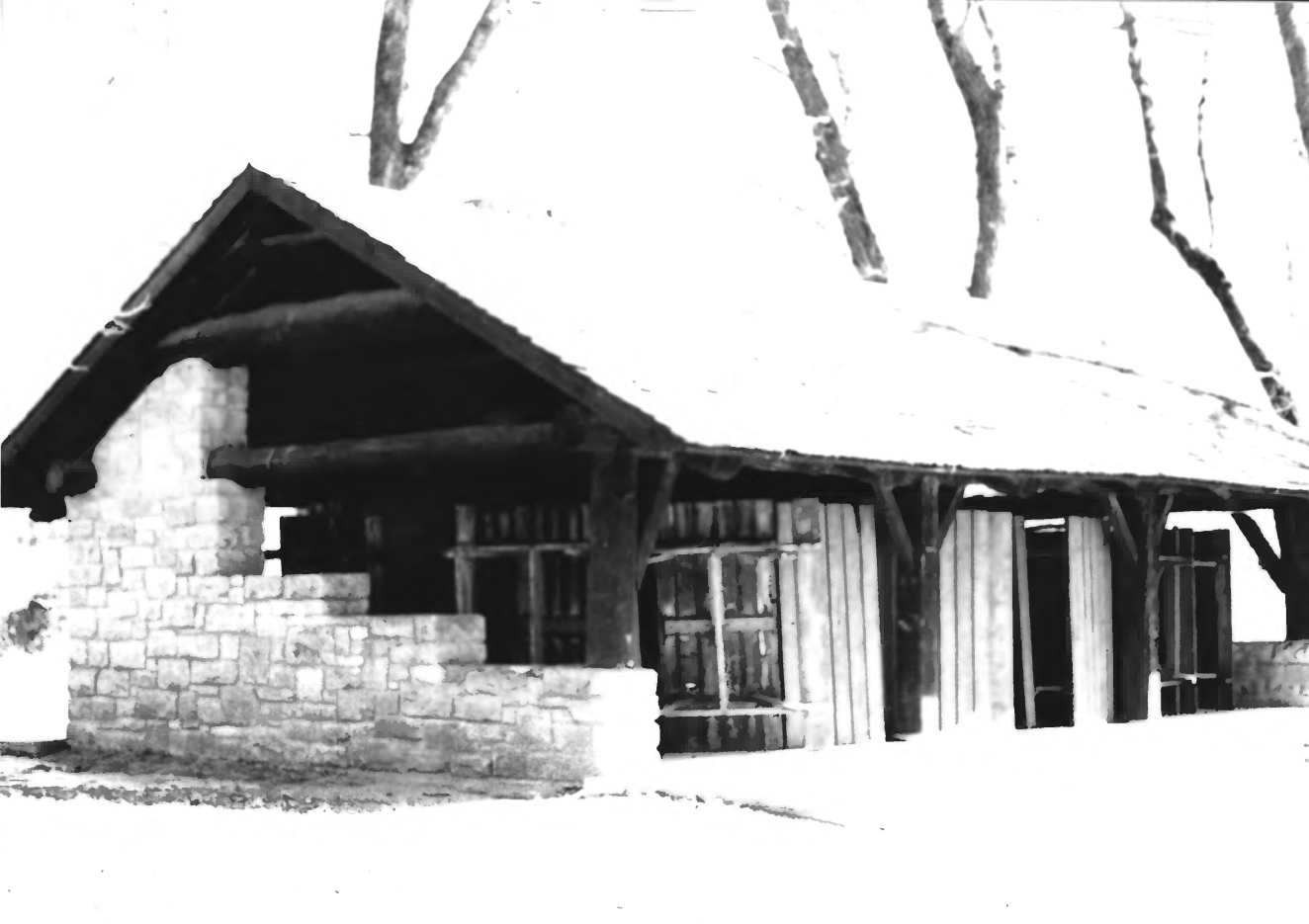




14. Backdoor Start For K: Area B



15. Board below starts with  $A$  and  $B$



16 Back to work start Panic! At the Disco



17. Backhand Start Rank: Area B





18. Baekubane Statu panik Arda B



19 Seditions + acts Panic: Amida BB



20.

Beddome state Park: Area 8