



Greeley Bridge
Greeley, Kansas

Photos taken by Larry Jochims
on March 1, 1986,

Negatives located at the
Kansas State Historical Society

East approach looking north.

189



Greeley Bridge
Greeley, Kansas

Photos taken by Larry Jochims
on March 1, 1986.

Negatives located at the
Kansas State Historical Society.

Main span, south side looking north.

299



Greeley Bridge
Greeley, Kansas

Photos taken by Larry Jochims
on March 1, 1986.

Negatives located at the
Kansas State Historical Society

East approach looking northwest.

399



Greeley Bridge
Greeley, Kansas

Photos taken by Larry Jochims
on March 1, 1986.

Negatives located at the
Kansas State Historical Society

East end looking west.

499



Greeley Bridge
Greeley, Kansas

Photos taken by Larry Jochims
on March 1, 1986.

Negatives located at the
Kansas State Historical Society

East Pony Truss, south side
looking north.

5079



WROUGHT IRON BRIDGE CO.
BUILDERS
CANTON OHIO

Greeley Bridge
Greeley, Kansas

Photos taken by Larry Jochims
on March 1, 1986.

Negatives located at the
Kansas State Historical Society.

Builders plaque, east end
looking west.

6089



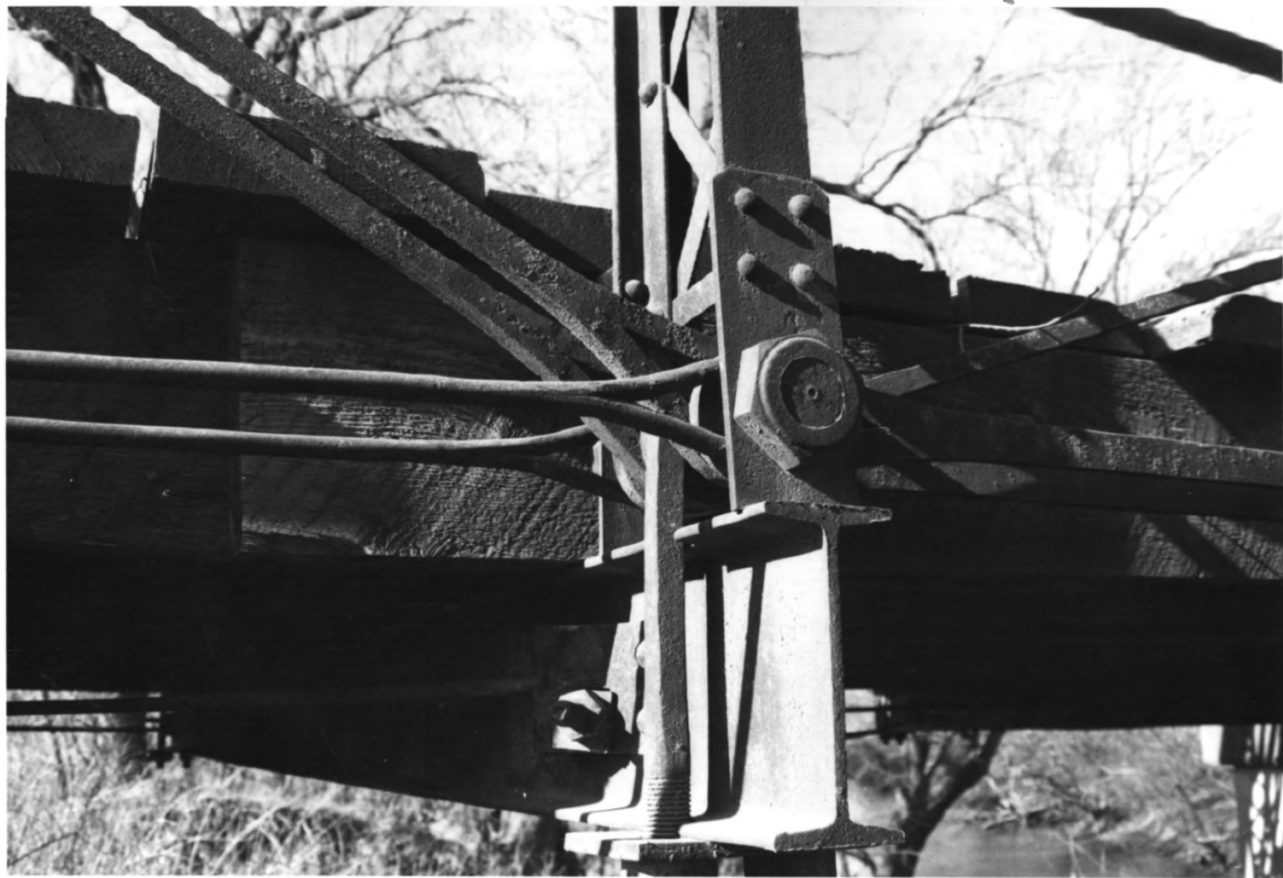
Greeley Bridge
Greeley, Kansas

Photos taken by Larry Jochims
on March 1, 1986.

Negatives located at the
Kansas State Historical Society.

Detail of portal strut with
brackets & endpost, west end
looking west.

729



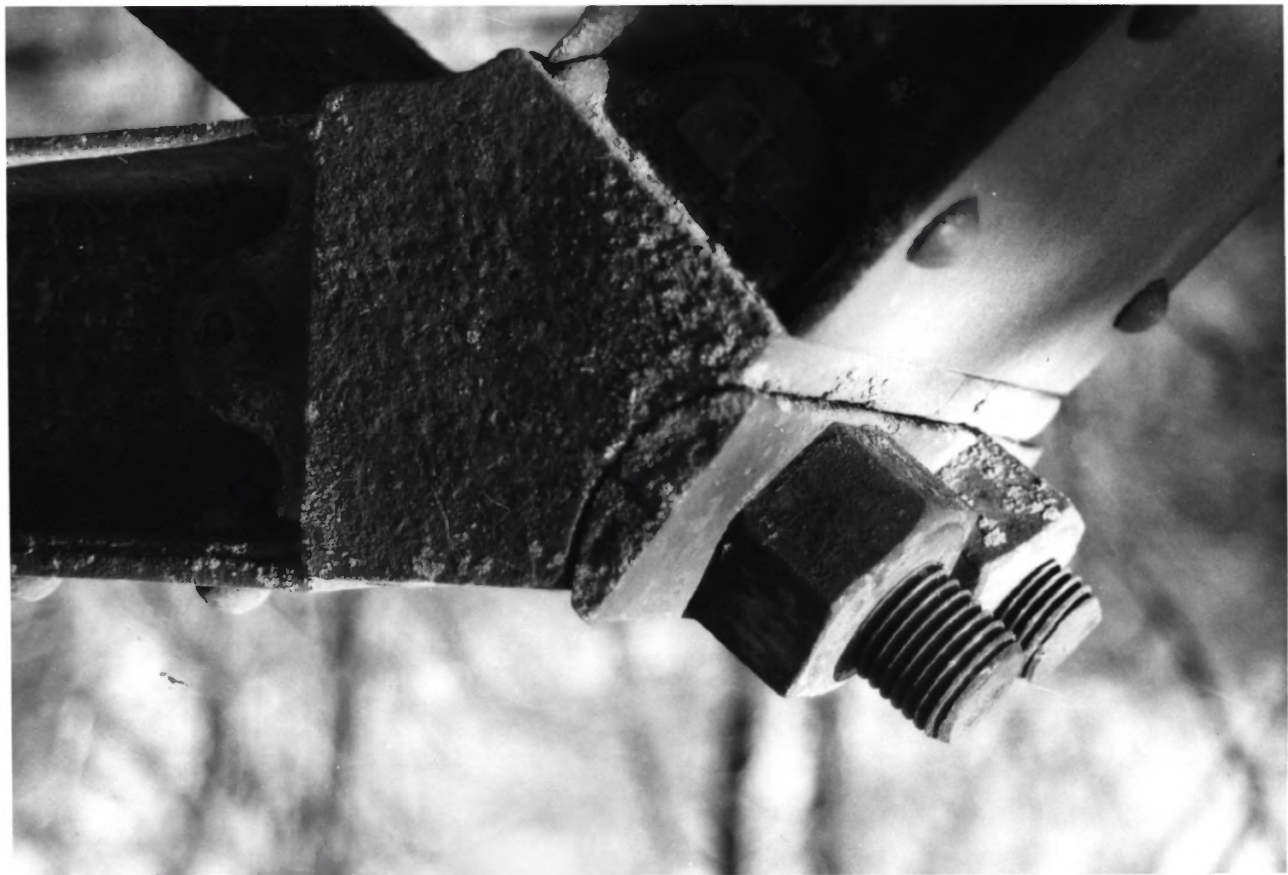
Greeley Bridge
Greeley, Kansas

Photos taken by Larry Jochims
on March 1, 1986.

Negatives located at the
Kansas State Historical Society

Detail of pin connection +
compression post on east
pony truss.

899



Greeley Bridge
Greeley, Kansas

Photos taken by Larry Jochims
on March 1, 1986.

Negatives located at the
Kansas State Historical Society

Detail of cast iron hip connection:
saddle on pony truss - west end

9079