



Wood chopper - June 1929

1. WOODCHOPPER; YUKON RIVER LIFEWAYS
2. Eagle vicinity, Alaska
3. 4. 1929
5. Alaska Historical Library, Alaska
Road Commission
6. looking south 7. P11; I3

Woodchopper
PHOTO CREDIT REQUIRED:

ALASKA ROAD COMMISSION

Alaska Historical Library



1. WOODCHOPPER, JACK WELCH, LEFT AND
ED BIEDERMAN; YUKON RIVER LIFEWAYS
2. Eagle vicinity, Alaska
3. 4.
5. NPS-ARO, courtesy of George Beck
6. 7. P12; I3, 13

JACK WELCH, LEFT, RAN WOODCHOPPER
ROADHOUSE. ED BIEDERMAN, RIGHT,
RAN MAIL.

ND.

COURTESY GEORGE BECK



1. WOODCHOPPER ROADHOUSE; YUKON RIVER
LIFEWAYS
2. Eagle vicinity, Alaska
3. Jet Lowe
4. August 1984
5. Library of Congress, HABS collection
6. from the northwest
7. P13; I3, 4

22 1987

HISTORIC AMERICAN BUILDINGS SURVEY
(Library of Congress Negative)

_____, Photographer
Date _____, 19____



1. WOODCHOPPER ROADHOUSE, MACHINERY;
YUKON RIVER LIFEWAYS
2. Eagle vicinity
3. Bill Vandeventer 4. June 1985
5. NPS-ARO
6. looking south 7. P15; I3

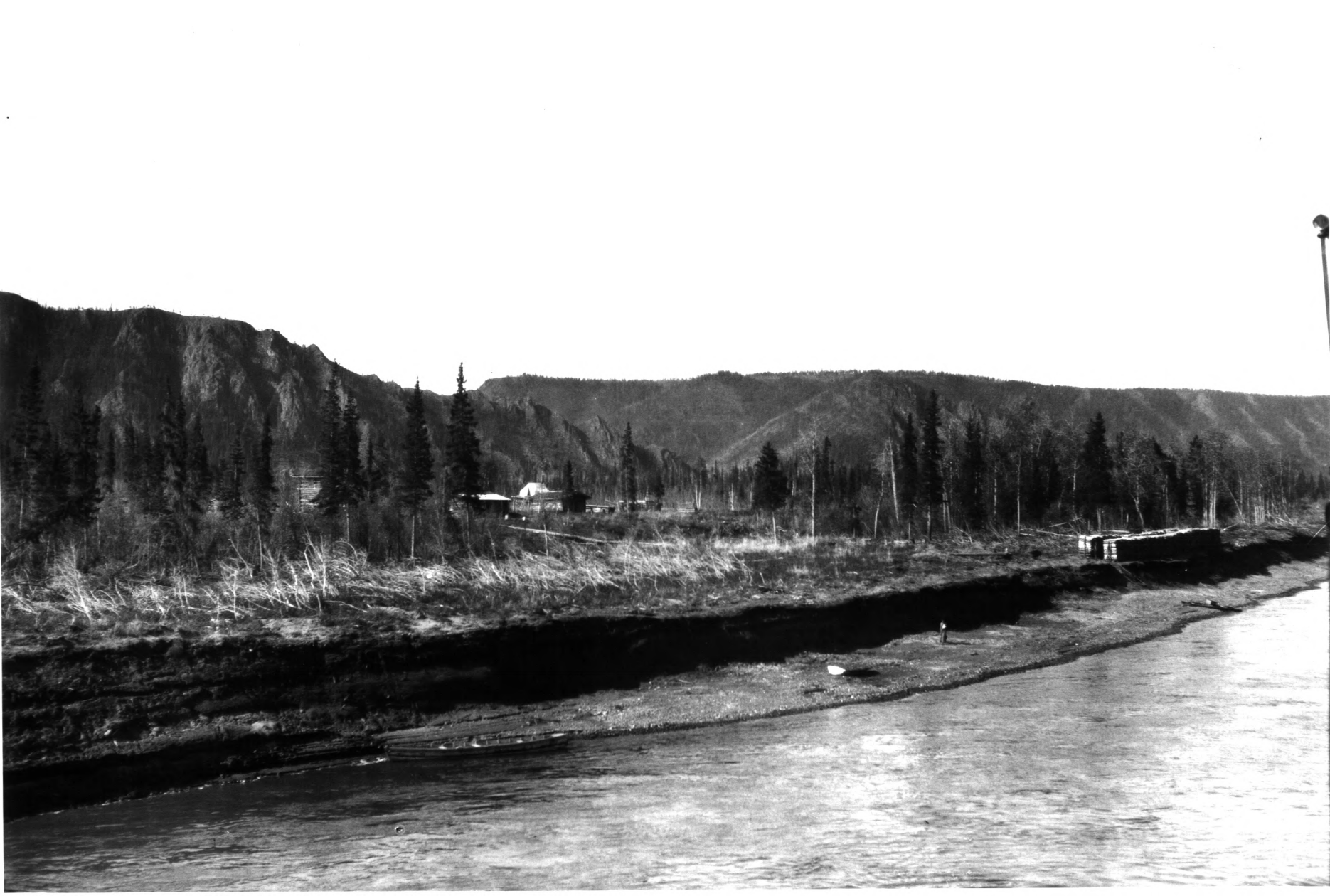


1. WOODCHOPPER ROADHOUSE; YUKON RIVER
LIFEWAYS
2. Eagle vicinity
3. Jet Lowe
4. August 1984
5. Library of Congress, HABS collection
6. south elevation
7. P14; I3, 4

MAY 22 1987

HISTORIC AMERICAN BUILDINGS SURVEY
(Library of Congress Negative)

-----, Photographer
Date -----, 19-----



1. TOWN OF WOODCHOPPER; YUKON RIVER
LIFEWAYS
2. Eagle vicinity, Alaska
3. J.B. Mertie 4. 1926
5. US Geological Survey, Denver #1277
6. looking south 7. P10; I3