

ARCHITECTURAL/HISTORICAL SURVEY

DAVENPORT, IOWA

The Architects Office
 Wehner, Nowysz, Pottschiull and Pfiffner
 201 dey building iowa city iowa 52240

DAVENPORT COMMUNITY DEVELOPMENT DEPARTMENT
 IOWA DIVISION OF HISTORIC PRESERVATION

SITE # 82-10- 3-W202 MAP # 1

HIST. DIST. _____

NAME Building at 202 W. 3rd St. H C

ADDRESS 202 W. 3rd St.

LEGAL DES. LeClaire's 1st 44 5 of SD 2 lots
SUB-DIVISION BLOCK PARCEL SUB-PARCEL
 Lots 4 & 5 (with an excess pr
 over plus over 128' in width

UTM 15 70,212,701 45,914,000 ACREAGE .44 ZONE _____
EASTING NORTHING

OWNER Schalk and Bradfield
310 Main St., Davenport, IA 52801

TITLE H. _____
 (IF DIFF) _____



SITE SHEET

MAP

DESCRIPTION

FORM 1 story commercial/office block, square plan CONST. DATE c. 1916
 MATERIALS Concrete & steel, terra cotta facing ARCH. STYLE Late Neoclassical
 FENESTRATION Multiple plate glass
 DIST. FEATURES See below
 ALTERATIONS Windows & shopfronts modernized
 SITE & RELATED STR. Occupies entire NW corner at 3rd & Main

ARCHITECTURE

STATEMENT

This building is among the few examples of the use of architectural terra cotta recorded in this survey. Designed in a stylized version of Neoclassical forms, the building has two street facades of large plate glass windows, divided into roughly equal sections by pilasters rising to simple caps with egg & dart molding. Above is a narrow entablature surmounted by a broad, paneled parapet displaying round and diamond-shaped "medallions" in glazed red tile or painted blue tile. The parapet has an upper portion of dark brick that appears to be part of the original construction.

Generally well-preserved, the building illustrates several aspects of architectural development in the CBD in the first decades of the 20th Century. Neoclassical forms were very popular - used particularly for banks, while developments in structural engineering (primarily the skeletal frame) were moving commercial architecture toward more frank expression of structure (one result being large window expanses).

SOURCES

(See continuation sheet)

SIGNIFICANCE

HISTORY

DESCRIPTION

This building was constructed in 1916 and housed a series of small shops. The prime commercial location was popular for a cigar store, shoe shop, optical shop and candy business in its early years.

SOURCES

City Directories, 1915, 1916, 1927.

ARCHITECTURAL HISTORIAN: Martha Bowers | HISTORIAN: MARLYS SVENDSEN - ROESLER | SURVEY COMP 1981

EVALUATION

ARCHITECTURAL

I. ARCH. EVALUATION Good
II. ENVIR. STATURE Tissue
III. INT. OF CONTEXT Good
IV. INT. OF FABRIC Good

LEVEL OF SIGNIFICANCE:
 NAT STATE LOCAL N. ELIG

HISTORICAL

I. THEME(S) OF SIGNIFICANCE
A. PRIMARY _____
B. SECONDARY _____
II. LEVEL OF SIGNIFICANCE:
 NAT STATE LOCAL
III. NRHP
ELIGIBLE NOT ELIGIBLE

HISTORIC DISTRICT CLASSIFICATION

A B C

FOR DIVISION OF HISTORIC PRESERVATION USE ONLY

1. DATE RECEIVED _____

2. DATE OF STAFF EVALUATION _____

A. ARCHITECTURAL B. HISTORICAL
ELIGIBLE FOR NRHP
NOT ELIGIBLE FOR NRHP

3. NRHP ACTION
A. STATE REVIEW COMM APP DISAPP TABLED DATE _____
B. FEDERAL REVIEW APP DISAPP TABLED DATE _____

4. D.H.P. SOURCES
 COUNTY RESOURCES
 W'SHIELD SURVEY
 NRHP
 GRANT
 DET. OF ELIGIBILITY
 R & C _____
 DAVENPORT A/H SURVEY

5. SUBJECT TRACES
6. PHOTO
1721-6, 7, 8

ARCHITECTURAL/HISTORICAL SURVEY

DAVENPORT, IOWA

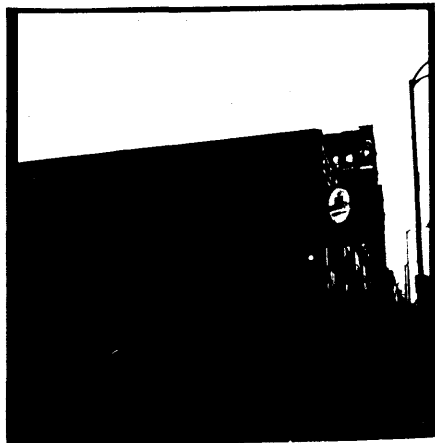
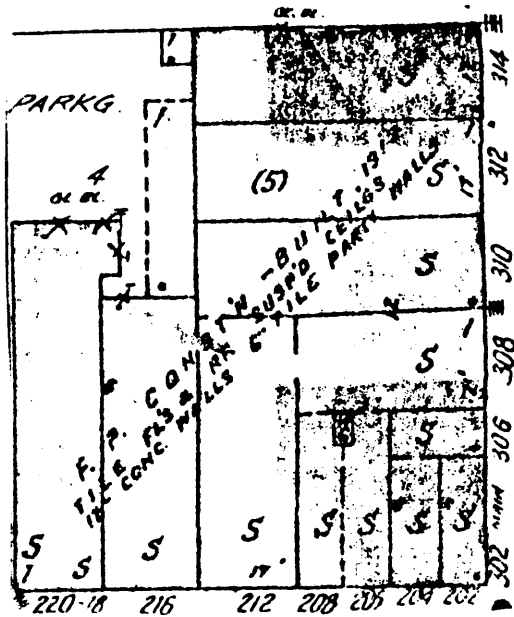
The Architects Office
Wehner, Nowysz, Pottsichull and Pfiffner
801 dev building, iowa city, iowa 52240

DAVENPORT COMMUNITY DEVELOPMENT DEPARTMENT
IOWA DIVISION OF HISTORIC PRESERVATION

82 - 10 - 3-W202

STATEMENT

Architectural terra-cotta also came into local use, most notably in the Kahl Building (1923) and to a lesser extent in the Hotel Black Hawk (1914). These elements can be readily appreciated in this building, in part because its single story brings its details closer to the passerby than is the case with the larger structures noted above.



CONTINUATION

ARCHITECTURAL/HISTORICAL SURVEY

DAVENPORT, IOWA

The Architects Office

Wehner, Nowysz, Pottschull and Pfiffner
201 day building iowa city iowa 52240

DAVENPORT COMMUNITY DEVELOPMENT DEPARTMENT
IOWA DIVISION OF HISTORIC PRESERVATION

SITE # 82-10- 3-W202 MAP # 1

HIST. DIST. _____

NAME Business at 202 W. Third Street H C

ADDRESS 202 W. 3rd St.

LEGAL DES. LeClaire's 1st 44 5 of SD 2 lots
SUB-DIVISION BLOCK PARCEL SUB-PARCEL
Lots 4 & 5 (with an excess of over plus over 128' in width)

UTM 3 15 170,212,700 4519,914,000 ACREAGE _____ ZONE _____
EASTING NORTHING

OWNER Schalk and Bradfield
310 Main St. Davenport, Ia. 52801

TITLE H. _____
(IF DIFF) _____



SITE SHEET

MAP

DESCRIPTION

FORM 1 story commercial/office block, square plan CONST. DATE c. 1916
MATERIALS Concrete & steel, terra cotta facing ARCH STYLE Late Neoclassical
FENESTRATION Multiple plate glass
DIST. FEATURES See below
ALTERATIONS Windows & shopfronts modernized
SITE & RELATED STR. Occupies entire NW corner at 3rd & Main

ARCHITECTURE

STATEMENT

This building is among the few examples of the use of architectural terra cotta recorded in this survey. Designed in a stylized version of Neoclassical forms, the building has two street facades of large plate glass windows, divided into roughly equal sections by pilasters rising to simple caps with egg & dart molding. Above is a narrow entablature surmounted by a broad, paneled parapet displaying round and diamond-shaped "medallions" in glazed red tile or painted blue tile. The parapet has an upper portion of dark brick that appears to be part of the original construction.

Generally well-preserved, the building illustrates several aspects of architectural development in the CBD in the first decades of the 20th Century. Neoclassical forms were very popular - used particularly for banks, while developments in structural engineering (primarily the skeletal frame) were moving commercial architecture toward more frank expression of structure (one result being large window expanses).

SOURCES

(See continuation sheet)

DESCRIPTION

This building was constructed in 1916 and housed a series of small shops. The prime commercial location was popular for a cigar store, shoe shop, optical shop and candy business in its early years.

SOURCES

City Directories, 1915, 1916, 1927.

ARCHITECTURAL HISTORIAN: Martha Bowers

HISTORIAN: MARLYS SVENDSEN - ROESLER

SURVEY COMP. 1981

EVALUATION

ARCHITECTURAL

I. ARCH. EVALUATION Good
II. ENVIR. STATURE Tissue
III. INT. OF CONTEXT Good
IV. INT. OF FABRIC Good

LEVEL OF SIGNIFICANCE:

NAT. STATE LOCAL N. ELIG.

HISTORICAL

I. THEME(S) OF SIGNIFICANCE:

A. PRIMARY _____
B. SECONDARY _____

II. LEVEL OF SIGNIFICANCE:

NAT. STATE LOCAL

III. N.R.H.P.

ELIGIBLE NOT ELIGIBLE

HISTORIC DISTRICT CLASSIFICATION

A. B. C

FOR DIVISION OF HISTORIC PRESERVATION USE ONLY

1. DATE RECEIVED _____

2. DATE OF STAFF EVALUATION _____

ELIGIBLE FOR N.R.H.P. A. ARCHITECTURAL B. HISTORICAL
NOT ELIGIBLE FOR N.R.H.P.

3. N.R.H.P. ACTION

A. STATE REVIEW COMM. APP. DISAPP. TABLED DATE _____
B. FEDERAL REVIEW APP. DISAPP. TABLED DATE _____

4. D.H.P. SOURCES

COUNTY RESOURCES
 W'SHIELD SURVEY
 N.R.H.P.
 GRANT _____

DET. OF ELIGIBILITY
 R. B. C. _____
 DAVENPORT A/H SURVEY

5. SUBJECT TRACES

6. PHOTO

1721-6, 7, 8

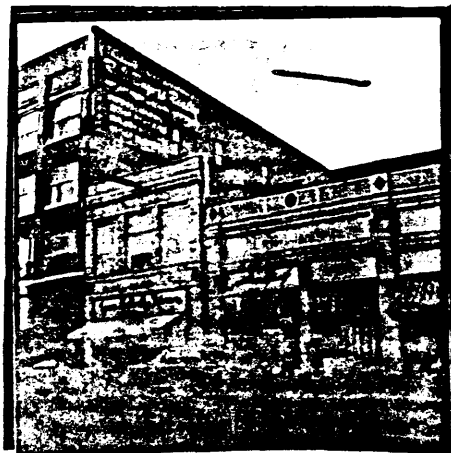
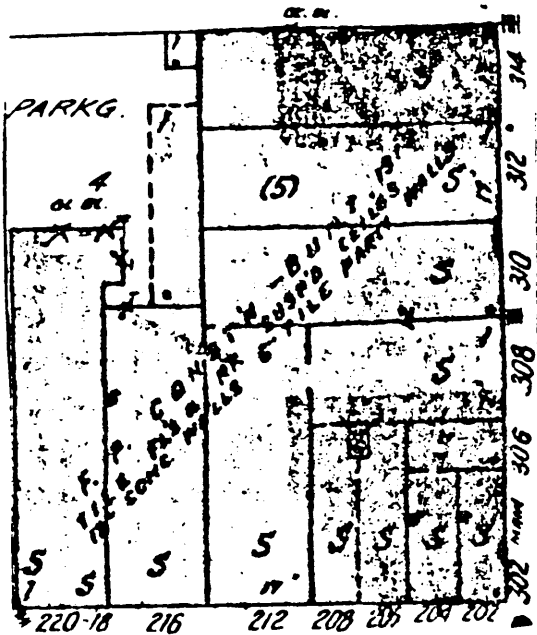
The Architects Office
Wehner, Nowysz, Pottschiull and Pfiffner
801 day building iowa city iowa 58940

DAVENPORT COMMUNITY DEVELOPMENT DEPARTMENT
IOWA DIVISION OF HISTORIC PRESERVATION

* 82 - 10 - 3-W202

STATEMENT

Architectural terra-cotta also came into local use, most notably in the Kahl Building (1920) and to a lesser extent in the Hotel Black Hawk (1914). These elements can be readily appreciated in this building, in part because its single story brings its details closer to the passerby than is the case with the larger structures noted above.



CONTINUATION