

Photo, by J. N. Furlong

Las Vegas, N. M.

LAS VEGAS & VICINITY.

Amalacio ... Jolly

Residence of ... House East side of
West ...

NOTICE: THIS MATERIAL MAY BE PROTECTED
BY COPYRIGHT LAW (TITLE 17 U. S. CODE).

... the street ... Our Lady of
... ..

1

CREDIT

1. Old Town Residential
District; Las Vegas, New Mexico;
JN Furlong; ca. 1879; Denver
Public Library; looking NW from
Moreno.

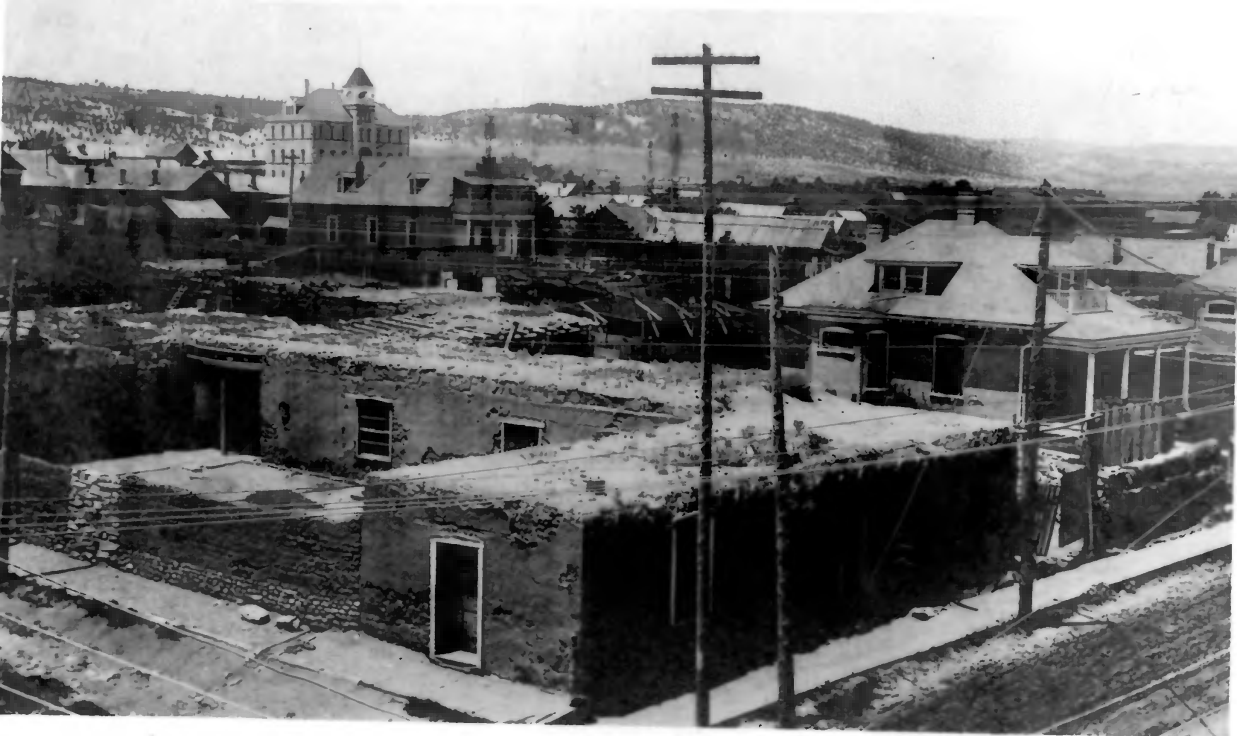
DENVER PUBLIC LIBRARY
WESTERN HISTORY DEPARTMENT

BY J. N. Furlong

REPRODUCTION OF PRINT
SUBJECT TO USE FEE

011494

New Mexico



Would you like to live in such
a place? H. A. P.

2

2. Old Town Residential
District; Las Vegas, New Mexico;
ca. 1907. Museum of New Mexico;
looking NW from Valencia and Hot
Springs.

87177

Las Vegas, New Mexico

View from corner of Valencia St.

and Hot Springs Blvd

ca 1907

(Neg. No. 87177)

**PLEASE CREDIT:
MUSEUM OF NEW MEXICO**



3. Old Town Residential
District; Las Vegas, New Mexico;
ca. 1910; Museum of New Mexico;
looking NE from Church along
Santa Ana.

77373

scene

Las Vegas, New Mexico

ca 1900

(Neg. No. 77373)

PLEASE CREDIT:
MUSEUM OF NEW MEXICO



4. Old Town Residential
District; Las Vegas, New Mexico;
Chris Wilson; 1982; L.V.
Citizen's Committee For Historic
Preservation; looking NE from
Tecolote and Montezuma.



5. Old Town Residential
District; Las Vegas, New Mexico;
Chris Wilson; 1982; L.V.
Citizen's Committee For Historic
Preservation; looking NW from
Moreno toward Our Lady of
Sorrows.



6

6. Old Town Residential
District; Las Vegas, New Mexico;
Chris Wilson; 1982; L.V.
Citizen's Committee For Historic
Preservation; looking SE on
Chavez from Blanchard.



7. Old Town Residential
District; Las Vegas, New Mexico;
Chris Wilson; 1982; L.V.
Citizen's Committee For Historic
Preservation; looking W on
Valley from Chavez; all contributing.



8

8. Old Town Residential
District; Las Vegas, New Mexico;
Chris Wilson; 1982; L.V.
Citizen's Committee For Historic
Preservation; looking W on
Moreno: 1st bldg.--Significant,
2nd--Contributing.



9

9. Old Town Residential
District; Las Vegas, New Mexico;
Chris Wilson; 1982; L.V.
Citizen's Committee For Historic
Preservation; NW on Gonzales
from Arroyo Montejia near; two
Significant bldgs.



10

10. Old Town Residential
District; Las Vegas, New Mexico;
Chris Wilson; 1982; L.V.
Citizen's Committee For Historic
Preservation; NW on Hot springs
from near Santa Fe; all
Contributing structures except
3rd on left--Significant.



11. 401 1/2 Grant; Old Town
Residential District; Las Vegas,
New Mexico; Chris Wilson; 1982;
L.V. Citizen's Committee For
Historic Preservation; E toward
N&W sides; Significant.



12. Old Town Residential
District; Las Vegas, New Mexico;
Chris Wilson; 1982; L.V.
Citizens' Committee For Historic
Preservation; SE corner of Taos
and Church; Contributing.



13. 1312 Chavez; Old Town
Residential District; Las Vegas,
New Mexico; Chris Wilson; 1982;
L.V. Citizen's Committee For
Historic Preservation; SW toward
N&W sides; Significant.



14. Old Town Residential
District; Las Vegas, New Mexico;
Chris Wilson; 1982; L.V.
Citizen's Committee For Historic
Preservation; SE toward corner
of Santa Fe and Church;
Significant.



15. 527 (?) Grant; Old Town
Residential District; Las Vegas,
New Mexico; Chris Wilson; 1982;
L.V. Citizen's Committee For
Historic Preservation; N toward
S&W sides; Contributing.



16. 2002 Church; Old Town
Residential District; Las Vegas,
New Mexico; Chris Wilson; 1982;
L.V. Citizen's Committee For
Historic Preservation; SE toward
W side; Significant.



17. 1931 New Mexico; Old Town Residential District; Las Vegas, New Mexico; Chris Wilson; 1982; L.V. Citizen's Committee For Historic Preservation; W toward E side; Significant.



18. 325 Santa Fe: Old Town
Residential District; Las Vegas,
New Mexico; Chris Wilson; 1982;
L.V. Citizen's Committee For
Historic Preservation, S toward
E side; ; Contributing.



19. Demetrio Silva House, 519
Grant; Old Town Residential
District; Las Vegas, New Mexico;
Chris Wilson; 1982; L.V.
Citizen's Committee For Historic
Preservation; S toward N&E
sides; Significant.



20. 411 Santa Fe: Old Town
Residential District; Las Vegas,
New Mexico; Chris Wilson; 1982;
L.V. Citizen's Committee For
Historic Preservation; S toward
N&E sides; Significant.



21. 1811 New Mexico: Old Town
Residential District; Las Vegas,
New Mexico; Chris Wilson; 1982;
L.V. Citizen's Committee For
Historic Preservation; W toward
NE side; Significant.



22. 2122 New Mexico; Old Town
Residential District; Las Vegas,
New Mexico; Chris Wilson; 1982;
L.V. Citizen's Committee For
Historic Preservation; N toward
S&W sides; Contributing.



23. 160 Valencia; Old Town
Residential District; Las Vegas,
New Mexico; Chris Wilson; 1982;
L.V. Citizen's Committee For
Historic Preservation; N toward
S&W sides; Significant.



24. 531 National; Old Town
Residential District; Las Vegas,
New Mexico; Chris Wilson; 1982;
L.V. Citizen's Committee For
Historic Preservation; SE toward
N&W sides; Significant.



25. Benigo^N Romero House, 2003
Hot Springs: Old Town
Residential District; Las Vegas,
New Mexico; Chris Wilson; 1982;
L.V. Citizen's Committee For
Historic Preservation; W toward
SE side; ✓ Significant.



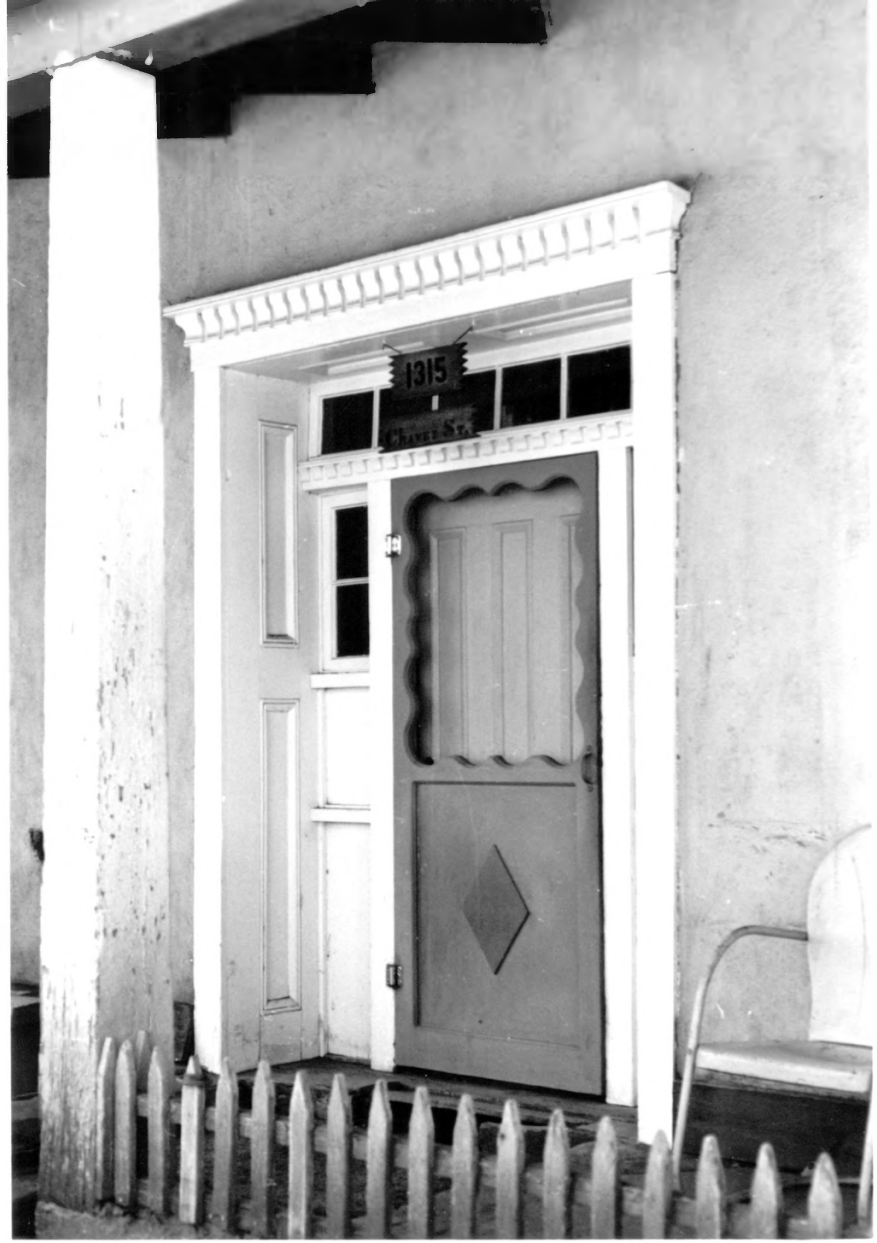
111

SANTA FE

26. 411 Santa Fe: Old Town
Residential District; Las Vegas,
New Mexico; Chris Wilson; 1982;
L.V. Citizen's Committee For
Historic Preservation; S into
front porch; Significant.



27. 401 1/2 Grant; Old Town
Residential District; Las Vegas,
New Mexico; Chris Wilson; 1982;
L.V. Citizen's Committee For
Historic Preservation; SW along
front porch; Significant.



28. 1315 Chavez; Old Town
Residential District; Las Vegas,
New Mexico; Chris Wilson; 1982;
L.V. Citizen's Committee For
Historic Preservation; S at
front door; Significant.

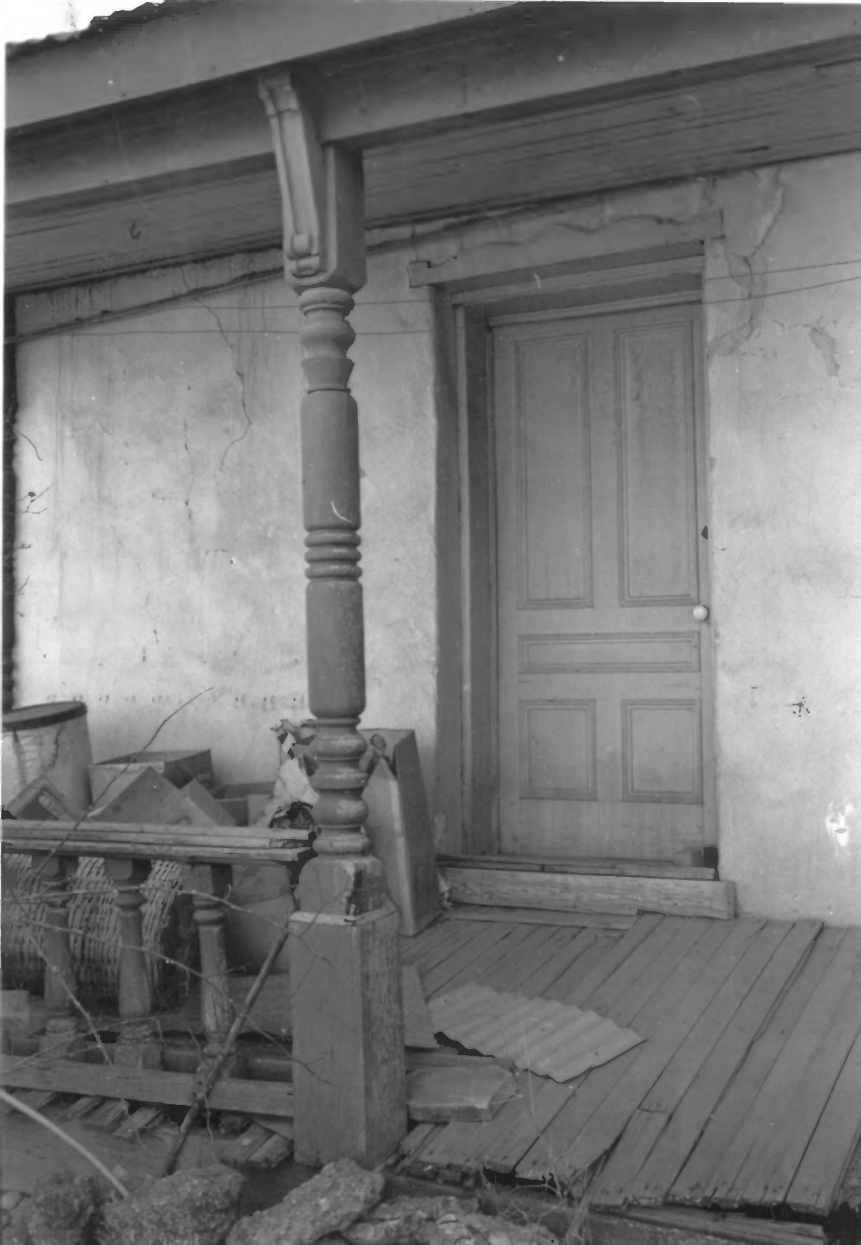


29. 160 Valencia; Old Town
Residential District; Las Vegas,
New Mexico; Chris Wilson; 1982;
L.V. Citizen's Committee For
Historic Preservation; N at
gable details; Significant.



2004

30. 2004 Gonzales; Old Town Residential District; Las Vegas, New Mexico; Chris Wilson; 1982; L.V. Citizen's Committee For Historic Preservation; NE at front porch; Significant.



31. 102 (?) Church: Old Town
Residential District; Las Vegas,
New Mexico; Chris Wilson; 1982;
L.V. Citizen's Committee For
Historic Preservation; SE at NW
porch; Significant.



32. 1608 New Mexico: Old Town
Residential District; Las Vegas,
New Mexico; Chris Wilson; 1982;
L.V. Citizen's Committee For
Historic Preservation; E toward
N&W sides; Significant.



33. 314 Valencia; Old Town
Residential District; Las Vegas,
New Mexico; Chris Wilson; 1982;
L.V. Citizen's Committee For
Historic Preservation; NW toward
S&E sides; Significant.



34. Secundino Romero House; Old Town Residential District; Las Vegas, New Mexico; Chris Wilson; 1982; L.V. Citizen's Committee For Historic Preservation; W at E side; Significant.



1022

35. 2022 Gonzales; Old Town
Residential District; Las Vegas,
New Mexico; Chris Wilson; 1982;
L.V. Citizen's Committee For
Historic Preservation; E at S&W
sides; Contributing.



807

36. 507 Moreno; Old Town
Residential District; Las Vegas,
New Mexico; Chris Wilson; 1982;
L.V. Citizen's Committee For
Historic Preservation; SE at N&W
sides; Contributing.



37. Charles A. Speiss House,
2323 Hot Springs; Old Town
Residential District; Las Vegas,
New Mexico; Chris Wilson; 1982;
L.V. Citizen's Committee For
Historic Preservation; W toward
E&S sides; Significant.

51657

idemic

Las Vegas, New Mexico

ca 1905

(Neg. No. 51657)

**PLEASE CREDIT:
MUSEUM OF NEW MEXICO**



38. Our Lady of Sorrows Church;
Old Town Residential District;
Las Vegas, New Mexico; Chris
Wilson; 1982; L.V. Citizen's
Committee For Historic
Preservation; N toward W&S
sides; Significant.



39. Presbyterian Mission: Old
Town Residential District; Las
Vegas, New Mexico; Chris Wilson;
1982; L.V. Citizen's Committee
For Historic Preservation; S
toward NE (main) entrance;
Significant.



40. 1702 New Mexico; Old Town
Residential District; Las Vegas,
New Mexico; Chris Wilson; 1982;
L.V. Citizen's Committee For
Historic Preservation; SE along
SE side; Significant.



41. 1201 CHavez: Old Town
Residential District; Las Vegas,
New Mexico; Chris Wilson; 1982;
L.V. Citizen's Committee For
Historic Preservation; NE along
front porch; Contributing.



812

42. 612 Valley; Old Town
Residential District; Las Vegas,
New Mexico; Chris Wilson; 1982;
L.V. Citizen's Committee For
Historic Preservation; NW toward
S&E sides; Non-Contributing.



300

2

43. 500 Grant; Old Town
Residential District; Las Vegas,
New Mexico; Chris Wilson; 1982;
L.V. Citizen's Committee For
Historic Preservation; N toward
S&W sides; Non-Contributing.