



- 1) MARROWBONE HISTORIC DISTRICT
- 2) Marrowbone, Cumberland County, Kentucky
- 3) Steve C. Gordon
- 4) February 8, 1983
- 5) Kentucky Heritage Council, Frankfort
- 6) Presbyterian Church, Woodmen's Hall, and
Burton House, looking E
- 7) Photo #1 of 24



- 1) MARROWBONE HISTORIC DISTRICT
- 2) Marrowbone, Cumberland County, Kentucky
- 3) Steve C. Gordon
- 4) February 8, 1983
- 5) Kentucky Heritage Council, Frankfort
- 6) Presbyterian Church and Modern Woodmen
of America Hall, looking E
- 7) Photo #2 of 24



- 1) Marrowbone Presbyterian Church, MARROWBONE
HISTORIC DISTRICT
- 2) Marrowbone, Cumberland County, Kentucky
- 3) Steve C. Gordon
- 4) February 8, 1983
- 5) Kentucky Heritage Council, Frankfort
- 6) Front and southwest elevs., looking SE
- 7) Photo #3 of 24



- 1) Marrowbone Presbyterian Church, MARROWBONE
HISTORIC DISTRICT
- 2) Marrowbone, Cumberland County, Kentucky
- 3) Steve C. Gordon
- 4) February 8, 1983
- 5) Kentucky Heritage Council, Frankfort
- 6) Front elevation, mixed wall treatments,
looking E
- 7) Photo #4 of 24



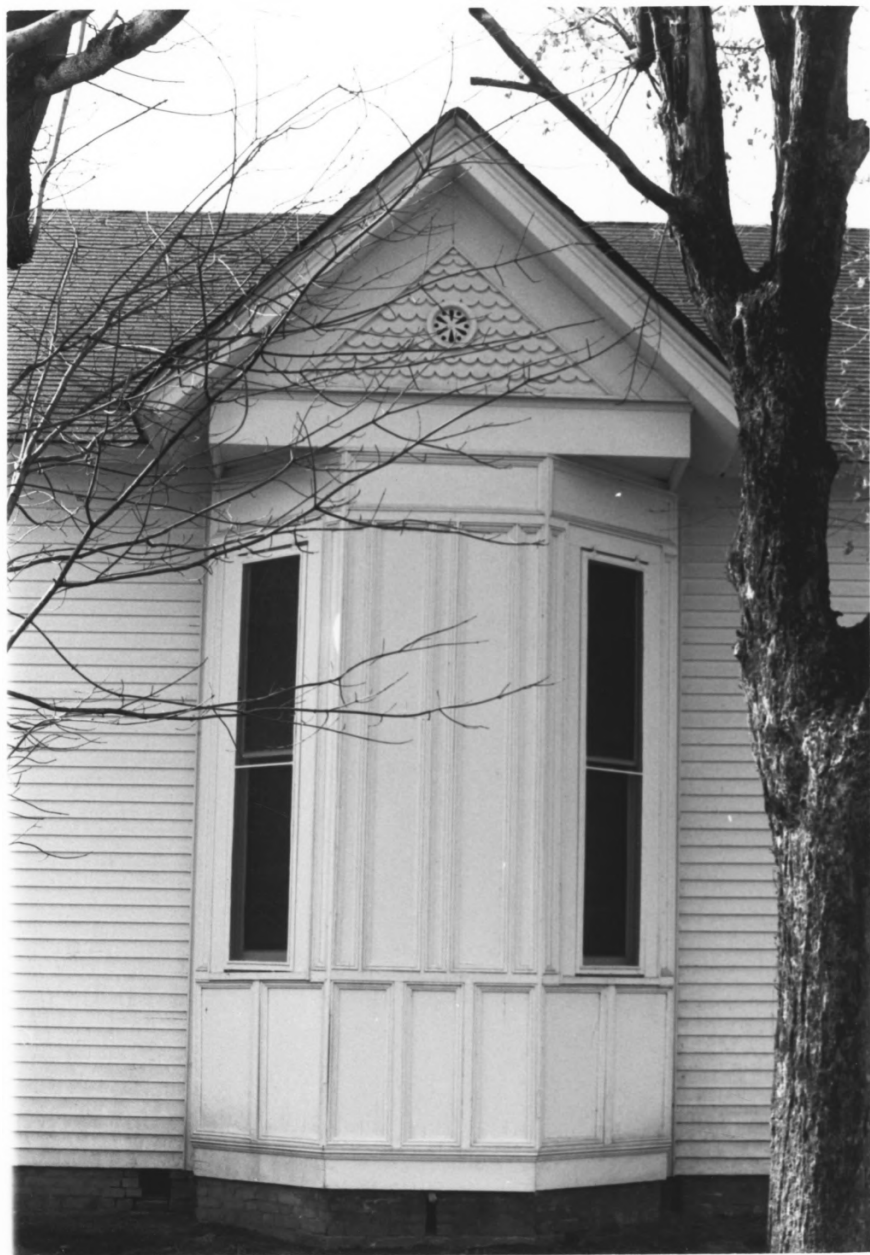
- 1) Marrowbone Presbyterian Church, MARROWBONE HISTORIC DISTRICT
- 2) Marrowbone, Cumberland County, Kentucky
- 3) Steve C. Gordon
- 4) February 8, 1983
- 5) Kentucky Heritage Council, Frankfort
- 6) Vestibule entrance, looking S
- 7) Photo #5 of 24



- 1) Marrowbone Presbyterian Church, MARROWBONE
HISTORIC DISTRICT
- 2) Marrowbone, Cumberland County, Kentucky
- 3) Steve C. Gordon
- 4) February 8, 1983
- 5) Kentucky Heritage Council, Frankfort
- 6) Southwest and rear elevs., showing
Sunday school wing, looking NE
- 7) Photo #6 of 24



- 1) Marrowbone Presbyterian Church, MARROWBONE
HISTORIC DISTRICT
- 2) Marrowbone, Cumberland County, Kentucky
- 3) Steve C. Gordon
- 4) February 8, 1983
- 5) Kentucky Heritage Council, Frankfort
- 6) Broached steeple, looking NE
- 7) Photo #7 of 24



- 1) Marrowbone Presbyterian Church, MARROWBONE
HISTORIC DISTRICT
- 2) Marrowbone, Cumberland County, Kentucky
- 3) Steve C. Gordon
- 4) February 8, 1983
- 5) Kentucky Heritage Council, Frankfort
- 6) Gabled bay, northeast elev., looking SW
- 7) Photo #8 of 24



- 1) Marrowbone Presbyterian Church, MARROWBONE
HISTORIC DISTRICT
- 2) Marrowbone, Cumberland County, Kentucky
- 3) Steve C. Gordon
- 4) February 8, 1983
- 5) Kentucky Heritage Council, Frankfort
- 6) Interior view, looking S-SE
- 7) Photo #9 of 24



- 1) Marrowbone Presbyterain Church, MARROWBONE
HISTORIC DISTRICT
- 2) Marrowbone, Cumberland County, Kentucky
- 3) Steve C. Gordon
- 4) February 8, 1983
- 5) Kentucky Heritage Council, Frankfort
- 6) Interior view looking NE toward front of
church
- 7) Photo #10 of 24



- 1) Modern Woodmen of America Hall, MARROWBONE
HISTORIC DISTRICT
- 2) Marrowbone, Cumberland County, Kentucky
- 3) Steve C. Gordon
- 4) February 8, 1983
- 5) Kentucky Heritage Council, Frankfort
- 6) Northeast and front elevs., looking SW
- 7) Photo #11 of 24



- 1) Modern Woodmen of America Hall, MARROWBONE
HISTORIC DISTRICT
- 2) Marrowbone, Cumberland County, Kentucky
- 3) Steve C. Gordon
- 4) February 8, 1983
- 5) Kentucky Heritage Council, Frankfort
- 6) Decorative gable end, looking SE
- 7) Photo #12 of 24



- 1) Modern Woodmen of America Hall, MARROWBONE
HISTORIC DISTRICT
- 2) Marrowbone, Cumberland County, Kentucky
- 3) Steve C. Gordon
- 4) February 8, 1983
- 5) Kentucky Heritage Council, Frankfort
- 6) Southwest and front elevs., looking E
- 7) Photo #13 of 24



- 1) Modern Woodmen of America Hall, MARROWBONE
HISTORIC DISTRICT
- 2) Marrowbone, Cumberland County, Kentucky
- 3) Steve C. Gordon
- 4) February 8, 1983
- 5) Kentucky Heritage Council, Frankfort
- 6) Southwest and rear elevs., looking N
- 7) Photo #14 of 24



- 1) Modern Woodmen of America Hall, MARROWBONE
HISTORIC DISTRICT
- 2) Marrowbone, Cumberland County, Kentucky
- 3) Steve C. Gordon
- 4) February 8, 1983
- 5) Kentucky Heritage Council, Frankfort
- 6) Interior view, looking SE toward stage
- 7) Photo #15 of 24



- 1) Modern Woodmen of America Hall, MARROWBONE
HISTORIC DISTRICT
- 2) Marrowbone, Cumberland County, Kentucky
- 3) Steve C. Gordon
- 4) February 8, 1983
- 5) Kentucky Heritage Council, Frankfort
- 6) Interior view, looking N toward stairs and
balcony
- 7) Photo # 16 of 24



- 1) William Barton House, MARROWBONE HISTORIC DISTRICT
- 2) Marrowbone, Cumberland County, Kentucky
- 3) Steve C. Gordon
- 4) February 8, 1983
- 5) Kentucky Heritage Council, Frankfort
- 6) Front (northwest) elev., looking SE
- 7) Photo #17 of 24



- 1) William Barton House, MARROWBONE HISTORIC DISTRICT
- 2) Marrowbone, Cumberland County, Kentucky
- 3) Steve C. Gordon
- 4) February 8, 1983
- 5) Kentucky Heritage Council, Frankfort
- 6) Front and southwest elevs., looking SE
- 7) Photo #18 of 24



- 1) William Barton House, MARROWBONE HISTORIC DISTRICT
- 2) Marrowbone, Cumberland County, Kentucky
- 3) Steve C. Gordon
- 4) February 8, 1983
- 5) Kentucky Heritage Council, Frankfort
- 6) Front and northeast elevs., looking SW
- 7) Photo #19 of 24



- 1) William Barton House, MARROWBONE HISTORIC DISTRICT
- 2) Marrowbone, Cumberland County, Kentucky
- 3) Steve C. Gordon
- 4) February 8, 1983
- 5) Kentucky Heritage Council, Frankfort
- 6) Front elevation window arrangement, looking SE
- 7) Photo #20 of 24



- 1) William Barton House, MARROWBONE HISTORIC DISTRICT
- (2) Marrowbone, Cumberland County, Kentucky
- 3) Steve C. Gordon
- 4) February 8, 1983
- 5) Kentucky Heritage Council, Frankfort
- 6) Southwest gable end, detailing, looking E
- 7) Photo #21 of 24



- 1) William Barton House, MARROWBONE HISTORIC DISTRICT
- 2) Marrowbone, Cumberland County, Kentucky
- 3) Steve C. Gordon
- 4) February 8, 1983
- 5) Kentucky Heritage Council, Frankfort
- 6) Sandstone foundation, NE elevation
- 7) Photo #22 of 24



- 1) William Barton House, MARROWBONE HISTORIC DISTRICT
- 2) Marrowbone, Cumberland County, Kentucky
- 3) Steve C. Gordon
- 4) February 8, 1983
- 5) Kentucky Heritage Council, Frankfort
- 6) Frame ell and additions, looking NW
- 7) Photo #23 of 24



- 1) William Barton House, MARROWBONE HISTORIC DISTRICT
- 2) Marrowbone, Cumberland County, Kentucky
- 3) Steve C. Gordon
- 4) February 8, 1983
- 5) Kentucky Heritage Council, Frankfort
- 6) Frame smokehouse behind kitchen, looking SE
- 7) Photo #24 of 24