



Wallace Historic District

8, 6, and 2 High Street, sites 70, 69, 68

Wallace, Shoshone County, Idaho

Photograph by Nancy Renk

March 11, 1980

Negative on file at the Idaho State Historical Society,
Boise, Idaho

View from north

Photograph 1 of 21



Wallace Historic District
4 King Street, site 82
Wallace, Shoshone County, Idaho

Photograph by Nancy Renk
March 11, 1980

Negative on file at the Idaho State Historical Society,
Boise, Idaho

View from east

Photograph 2 of 21



Wallace Historic District
406 First Street, site 92
Wallace, Shoshone County, Idaho

Photograph by Nancy Renk
March 27, 1980

Negative on file at the Idaho State Historical Society,
Boise, Idaho

View from east

Photograph 3 of 21



514

Wallace Historic District
510-510½ First Street, site 97
Wallace, Shoshone County, Idaho

Photograph by Nancy Renk
March 27, 1980

Negative on file at the Idaho State Historical Society,
Boise, Idaho

View from east

Photograph 4 of 21



Wallace Historic District

314, 312 and 310 High Bank, sites 151, 152, 153

Wallace, Shoshone County, Idaho

Photograph by Nancy Renk

April 17, 1980

Negative on file at the Idaho State Historical Society,
Boise, Idaho

View from northeast

Photograph 5 of 21



Wallace Historic District
307 Elm Street, site 160
Wallace, Shoshone County, Idaho

Photograph by Nancy Renk
April 17, 1980

Negative on file at the Idaho State Historical Society,
Boise, Idaho

View from northeast

Photograph 6 of 21



Wallace Historic District
718 Residence Street, site 195
Wallace, Shoshone County, Idaho

Photograph by Nancy Renk
May 12, 1980

Negative on file at the Idaho State Historical Society,
Boise, Idaho

View from northwest

Photograph 7 of 21



Wallace Historic District
604-606 Pearl Street, site 207
Wallace, Shoshone County, Idaho

Photograph by Nancy Renk
April 17, 1980

Negative on file at the Idaho State Historical Society,
Boise, Idaho

View from northwest

Photograph 8 of 21



Wallace Historic District

712 (left) and 710 (right) Maple Street, sites 221
and 222

Wallace, Shoshone County, Idaho

Photograph by Nancy Renk

May 1, 1980

Negative on file at the Idaho State Historical Society,
Boise, Idaho

View from east

Photograph 9 of 21



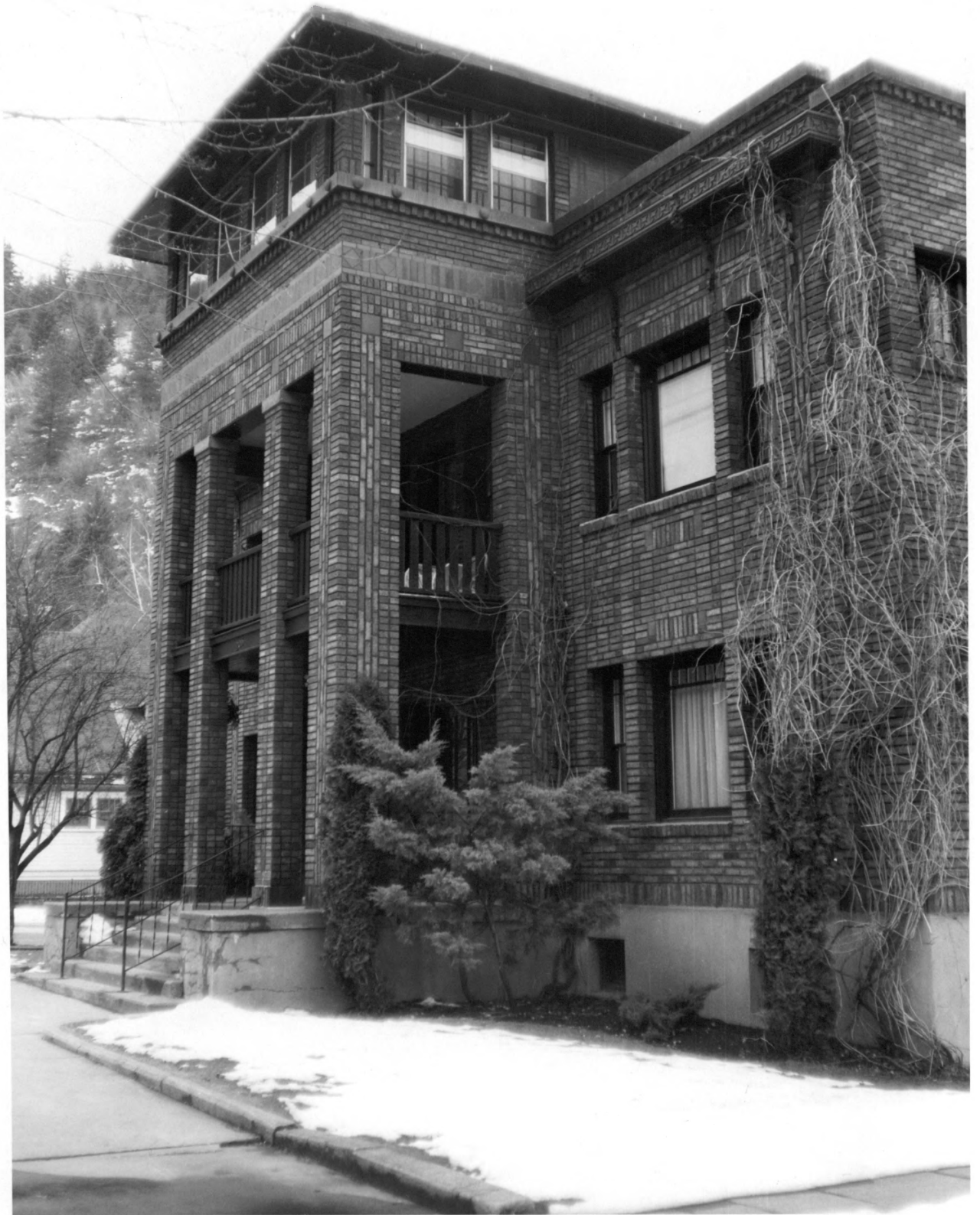
Wallace Historic District
Rossi, Herman, House, site 289
221 Cedar Street
Wallace, Shoshone County, Idaho

Photograph by Nancy Renk
December 28, 1979

Negative on file at the Idaho State Historical Society,
Boise, Idaho

View from southeast

Photograph 10 of 21



Wallace Historic District
McGrath Apartments, site 293
203 Cedar Street
Wallace, Shoshone County, Idaho

Photograph by Nancy Renk
February 5, 1980

Negative on file at the Idaho State Historical Society,
Boise, Idaho

View from southeast

Photograph 11 of 21



Wallace Historic District

St. Alphonsus Catholic Church, site 303

Southeast corner of Pine and Second streets

Wallace, Shoshone County, Idaho

Photograph by Nancy Renk

February 5, 1980

Negative on file at the Idaho State Historical Society,
Boise, Idaho

View from northwest

Photograph 12 of 21



Wallace Historic District

Holy Trinity Episcopal Church, site 334

Northwest corner of Fourth and Cedar streets

Wallace, Shoshone County, Idaho

Photograph by Nancy Renk

February 5, 1980

Negative on file at the Idaho State Historical Society,
Boise, Idaho

View from southeast

Photograph 13 of 21



Wallace Historic District

407 (left) and 409 (right) Pine Street, sites 355 and
354

Wallace, Shoshone County, Idaho

Photograph by Nancy Renk

April 1, 1980

Negative on file at the Idaho State Historical Society,
Boise, Idaho

View from south

Photograph 14 of 21



Wallace Historic District
Methodist Church, site 356
Northeast corner of Fourth and Pine streets
Wallace, Shoshone County, Idaho

Photograph by Nancy Renk
February 5, 1980

Negative on file at the Idaho State Historical Society,
Boise, Idaho

View from southwest

Photograph 15 of 21



Wallace Historic District
115 Cedar Street, site 297
Wallace, Shoshone County, Idaho

Photograph by Nancy Renk
March 27, 1980

Negative on file at the Idaho State Historical Society,
Boise, Idaho

View from south

Photograph 16 of 21



Wallace Historic District
218 Cypress Avenue, site 412
Wallace, Shoshone County, Idaho

Photograph by Nancy Renk
April 3, 1980

Negative on file at the Idaho State Historical Society,
Boise, Idaho

View from northwest

Photograph 17 of 21



3RD STREET
CYPRESS ST

24A92

Wallace Historic District
Cypress Avenue, 200 block, north side
Wallace, Shoshone County, Idaho

Photograph by Nancy Renk
April 8, 1980

Negative on file at the Idaho State Historical Society,
Boise, Idaho

View from east

Photograph 18 of 21



MUSEUM

COEUR D'ALENE DISTRICT MINING MUSEUM

PEPSI
Emblem House

Don's
Stone House

BAR

Wallace Historic District

Bank Street, 500 block, north side, sites (left to
right) 506, 507, 508, 509, 510

Wallace, Shoshone County, Idaho

Photograph by Nancy Renk

April 8, 1980

Negative on file at the Idaho State Historical Society,
Boise, Idaho

View from west

Photograph 19 of 21



The Court of Honor

Coca-Cola

1313 Club
PIANO BAR

AVCO
FINANCIAL SERVICES

SEARS
Authorized
CATALOG SALES
MERCHANT

1174

Wallace Historic District

Bank Street, 600 block, south side, sites (right to
left) 528, 529, 530, 531, 532, 533, 534

Wallace, Shoshone County, Idaho

Photograph by Nancy Renk

April 8, 1980

Negative on file at the Idaho State Historical Society,
Boise, Idaho

View from west

Photograph 20 of 21



Wallace Historic District
Coeur d'Alenes Company Foundry (Coeur d'Alene Iron Works),
Boiler House, site 543
Highway 4
Wallace, Shoshone County, Idaho

Photograph by Nancy Renk,
May 12, 1980

Negative on file at the Idaho State Historical Society,
Boise, Idaho

View from south

Photograph 21 of 21