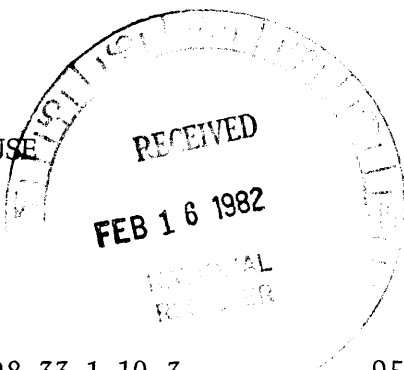


17. WILLIAM PETER WEBB HOUSE
401 Main St.

Mrs. Nelson Brubbs
401 Main St.
Eutaw, AL 35462



Lot 90 Tax Map 35-18-08-33-1-10-3

.95 acre (142' Main x 292' Eutaw)

Latitude: 32° 50' 26"

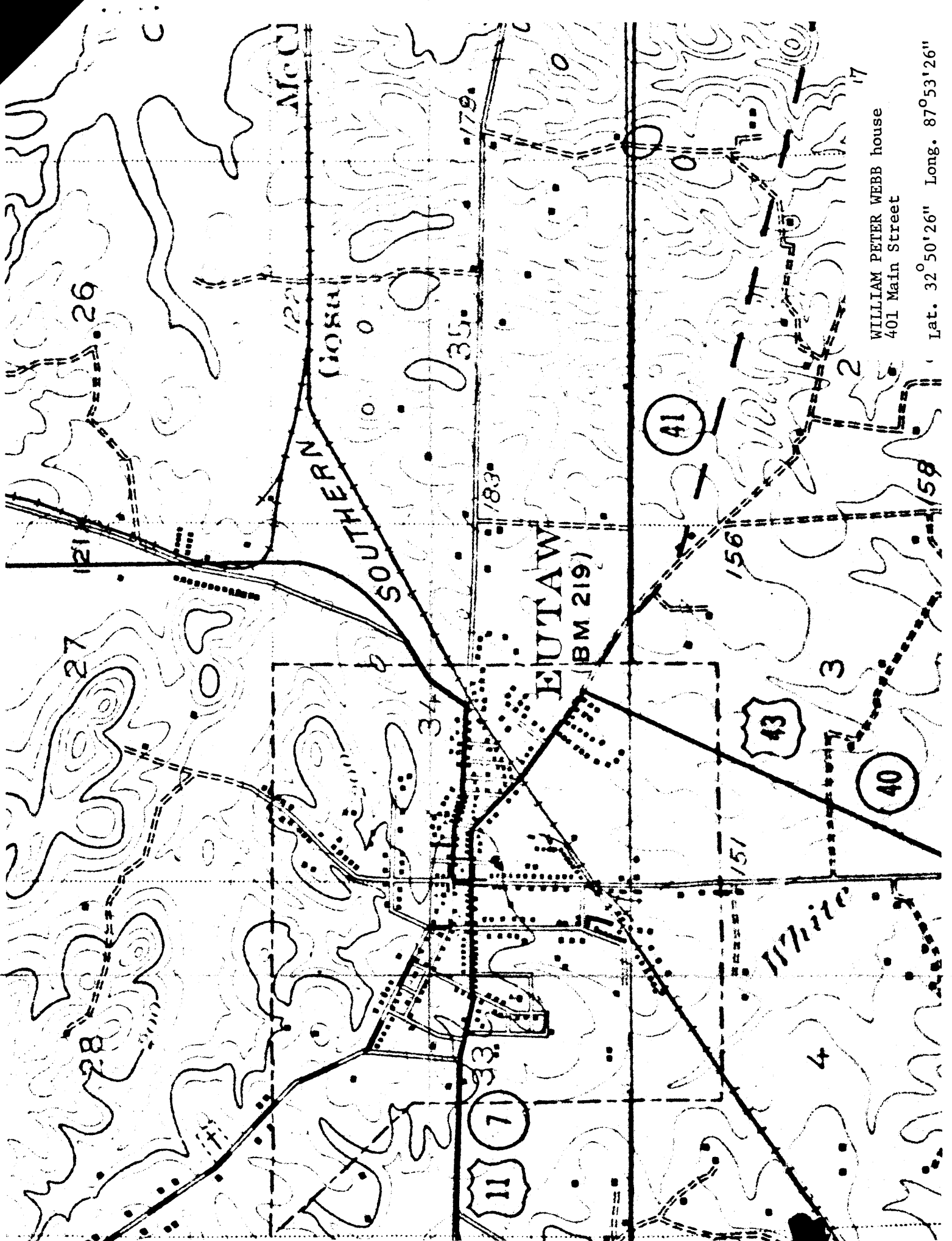
Longitude: 87° 53' 26"

c. 1840 Architect/Builder Benjamin D. Gullett?
mid 19th century portico
1914 portico extension, rear additions

SIGNIFICANCE: This house represents the "formalization" - through the application of Greek Revival pediment, entablature and doorway - of the traditional I - house form, first appearing in the vicinity at Mesopotamia and representing the transplantation from the South Atlantic source area.

DESCRIPTION: Here at the southwest corner of Main and White Streets, lawyer William Peter Webb built a typical Mesopotamia-type house, two-storied, center halled, and four roomed. It had eighteen paned windows throughout. The staircase had colonnette newels and square banisters. Rooms contained chairrails, and pilastered mantels similar to those in the Benjamin D. Gullett House (#4) across the street, suggesting that Gullett may have been the builder.

REMODELING: At an early date the building was remodeled. It was given a two storied distyle, square piered portico, with an upper door opening on a balcony. The entablature of the portico was extended across the front wall of the house, necessitating new upstairs fenestration. These windows were fifteen paned, set lower in the wall, as can be seen by comparing their position with the original windows on the flanks. L. N. Grubbs added the single story extensions to the portico and a number of additions at the rear.



WILLIAM PETER WEBB house
401 Main Street

Lat. 32° 50' 26" Long. 87° 53' 26"