

Taylor Memorial Library

Milford, CT, *New Haven County, Connecticut*

Susan Ryan, photo, 1/79

Filed with Connecticut Historical  
Commission, Hartford, CT

Exterior, main facade, southeast view

*DOE*  
AUG 21 1979

JUN 19 1979

*1/7*



Taylor Memorial Library

Milford, CT, *New Haven County,*

*Connecticut*  
*DOE*  
AUG 21 1979

Susan Ryan, photo, 1/79

Filed with Connecticut Historical  
Commission, Hartford, CT

Exterior, south view

JUN 19 1979

*20/r*



Taylor Memorial Library  
Milford, CT, *New Haven County Connecticut*

AUG 21 1979

Susan Ryan, photo, 1/79

*DOE*

Filed with Connecticut Historical  
Commission, Hartford, CT

Interior, entrance doors, main hall,  
first floor, northwest view

JUN 19 1979

*3/7*



Taylor Memorial Library

Milford, CT, *New Haven County, Connecticut*

AUG 21 1979

*DOE*

Susan Ryan, photo, 1/79

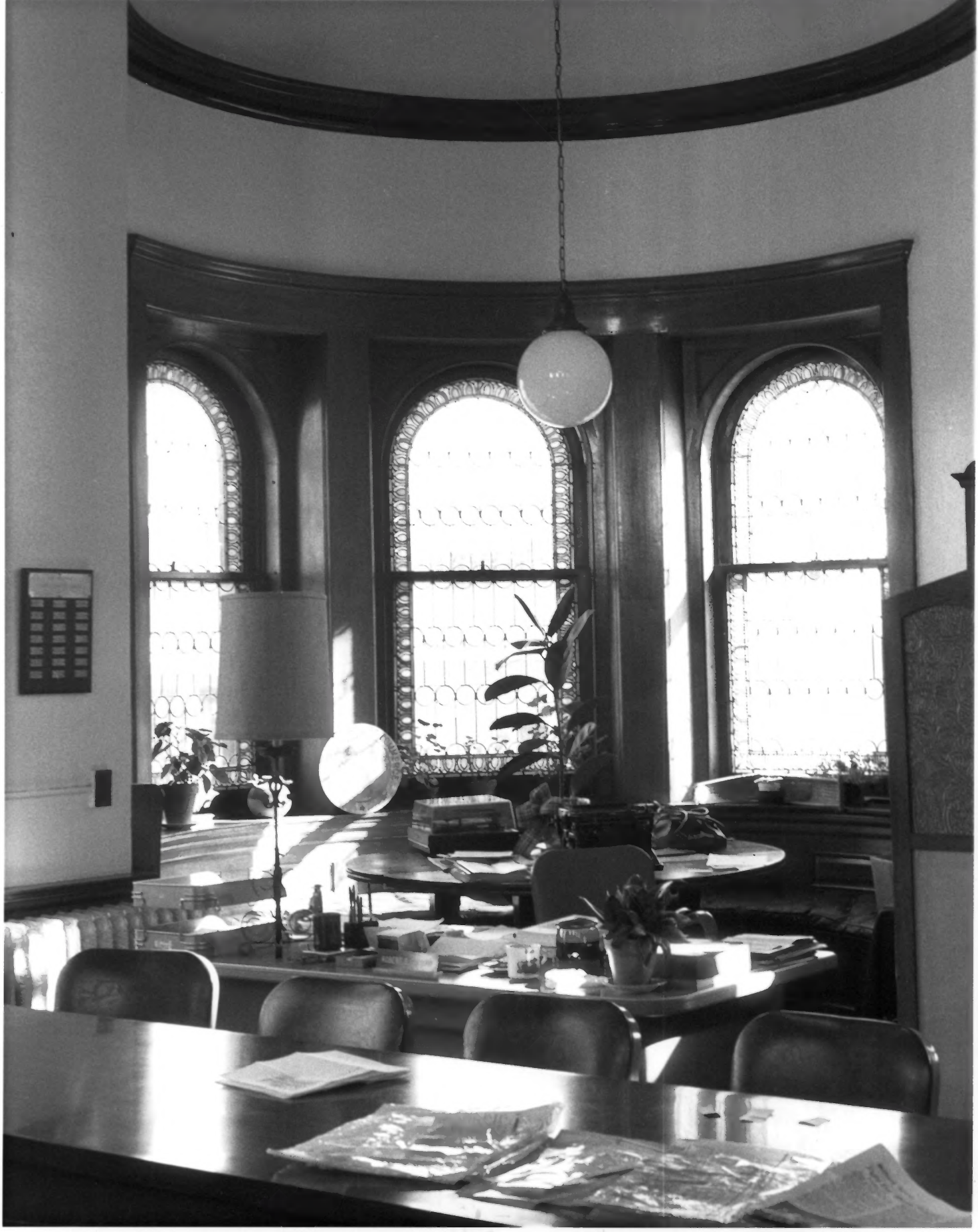
Filed with Connecticut Historical  
Commission, Hartford, CT

Interior, stairway, first floor,  
southwest view

JUN 19 1979

*49/7*





Taylor Memorial Library

Milford, CT

*New Haven County, Connecticut*

Susan Ryan, photo, 1/79

AUG 21 1979  
RDE

Filed with Connecticut Historical  
Commission, Hartford, CT

Interior of tower, old stack room,  
first floor, west view

JUN 19 1979

54/17



TO ONE WHOSE IMAGE NEVER MAY DEPART  
DEEP GRAVEN ON THIS GRATEFUL HEART  
TILL MEMORY BE DEAD  
TO ONE WHOSE LOVE HATH LONGER DWELT  
MORE DEEPLY FIXED MORE KEENLY FELT  
MY MOTHER



Taylor Memorial Library  
Milford, CT

*New Haven County,*

*Connecticut*  
*DOE*

Susan Ryan, photo, 1/79

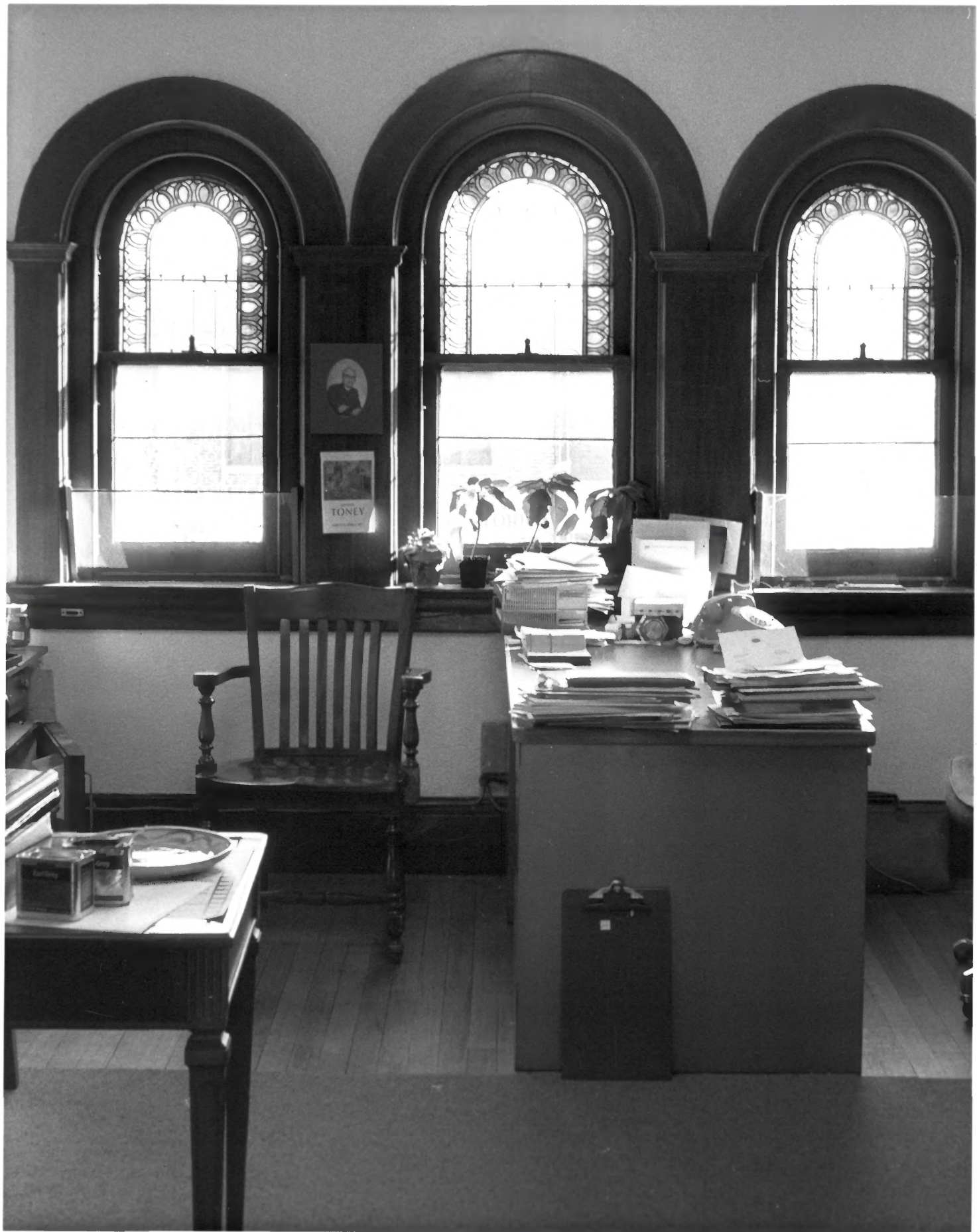
AUG 21 1979

Filed with Connecticut Historical  
Commission, Hartford, CT

Interior, fireplace, old reading room,  
first floor, northeast view.

JUN 19 1979

6/7



Taylor Memorial Library

Milford, CT

*New Haven County, Connecticut*  
Susan Ryan, photo, 1/79

*DOE*  
AUG 21 1979

Filed with Connecticut Historical  
Commission, Hartford, CT

Interior, old board room, second floor,  
southeast view.

JUN 19 1979

7/17