

UNITED STATES  
DEPARTMENT OF THE INTERIOR  
NATIONAL PARK SERVICE

NATIONAL SURVEY OF HISTORIC SITES AND BUILDINGS  
SUPPLEMENTARY SHEET

This sheet is to be used for giving additional information or comments, for more space for any item on the regular form, and for recording pertinent data from future studies, visitations, etc. Be brief, but use as many Supplementary Sheets as necessary. When items are continued they should be listed, if possible, in numerical order of the items. All information given should be headed by the item number, its name, and the word (cont'd), as, 6. Description and Importance (cont'd) . . .

STATE

Minnesota

NAME(S) OF SITE

Hull Rust Mine



Located about 3 miles southwest of Hibbing, the Hull Rust Mine is owned by the U. S. Steel Corporation and is the largest open-pit mine in the world. Camera pointing to the west, northwest.

Photos by Mattison,  
June, 1964



LL-RUST MINE, MINNESOTA 8/23/



Viewing platform near Hibbing, MN.

HULL-RUST MINE, MINNESOTA 8/23/77



View from observation platform

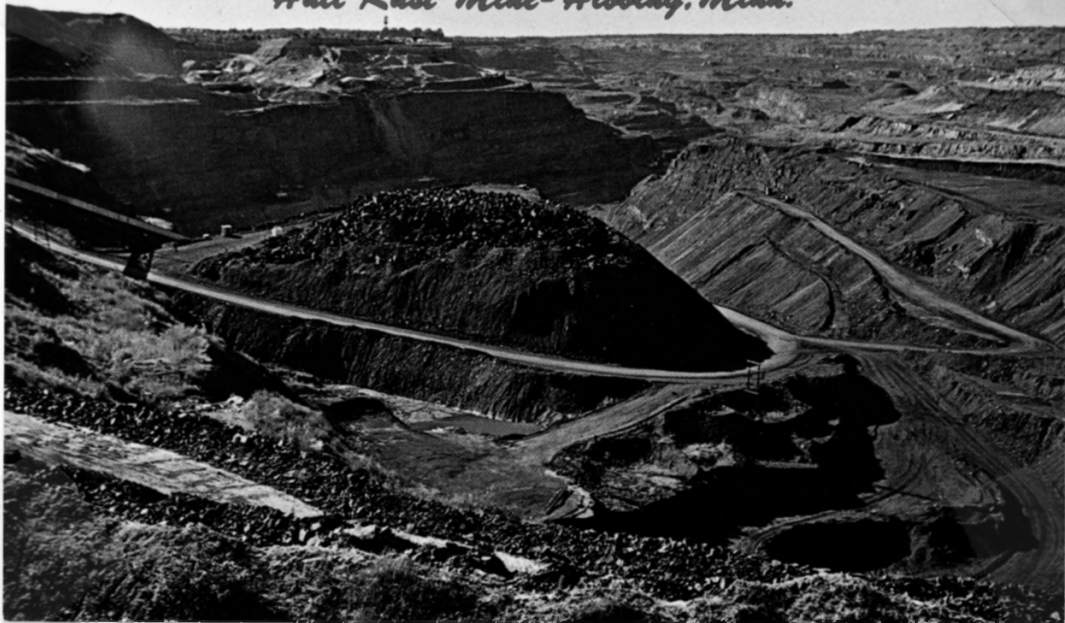
WJLL-RUST MINE, MINNESOTA 8/23/71



View from observation platform

HULL-RUST MINE, MINNESOTA

*Hull Rust Mine-Hibbing, Minn.*



The largest Open Pit Mine in the world. Hibbing, Minnesota