

**LAKE GUERNSEY STATE PARK**  
Guernsey vicinity,  
Platte County, Wyoming  
Dam and Powerhouse  
Photo: Mark Junge, 1977



**LAKE GUERNSEY STATE PARK**

Guernsey vicinity,  
Platte County, Wyoming  
Powder Magazine on Lakeshore  
Drive

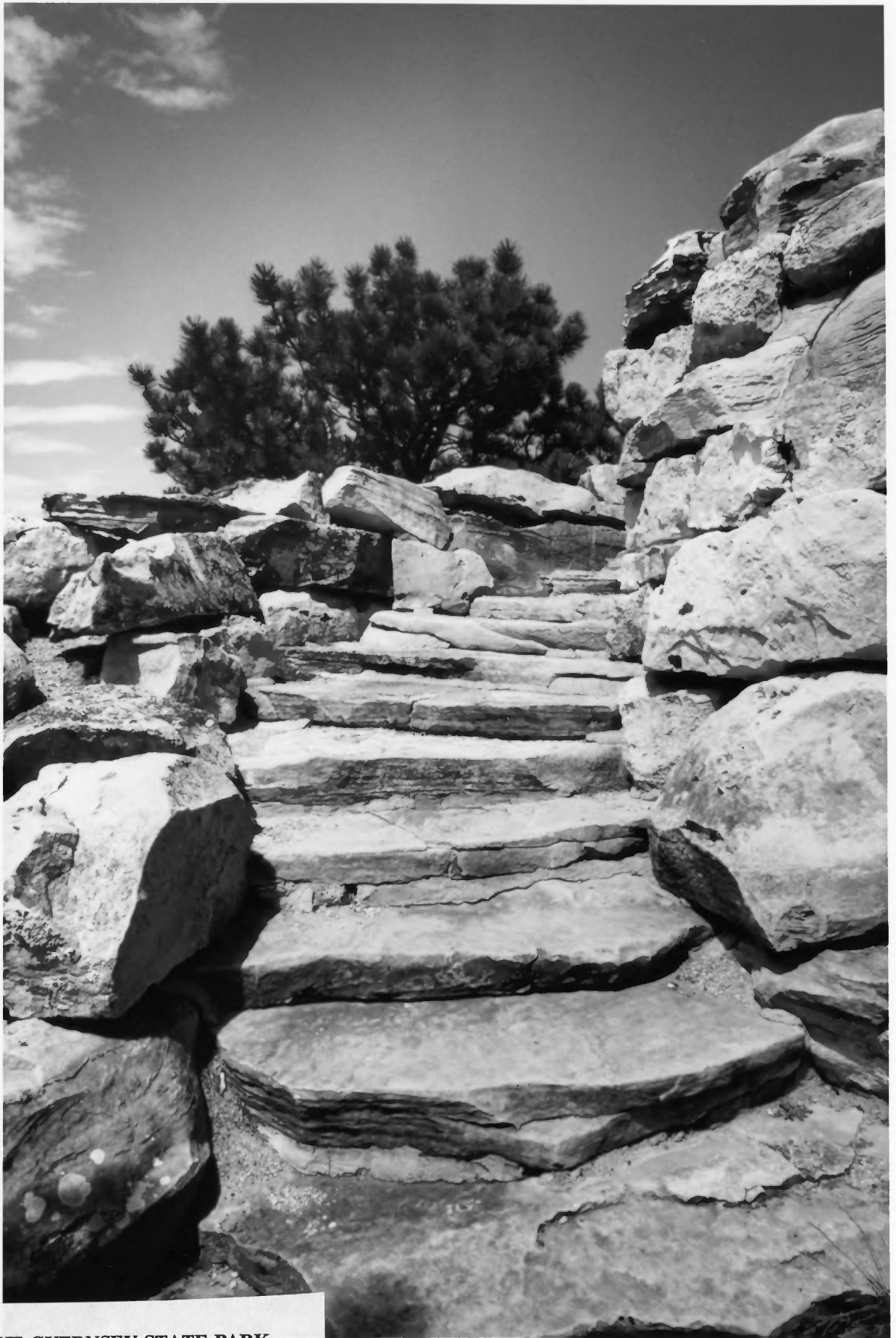
Photo: Mark Junge, 1977



**LAKE GUERNSEY STATE PARK**  
**Guernsey vicinity,**  
**Platte County, Wyoming**  
**Site of CCC Camp**  
**Photo: Ethan Carr, 1994**



**LAKE GUERNSEY STATE PARK**  
Guernsey vicinity,  
Platte County, Wyoming  
The "Castle," overlook structure  
Photo: Ethan Carr, 1994



**LAKE GUERNSEY STATE PARK**  
Guernsey vicinity,  
Platte County, Wyoming  
"Castle" steps  
Photo: Ethan Carr, 1994



**LAKE GUERNSEY STATE PARK**  
Guernsey vicinity,  
Platte County, Wyoming  
View from Brimmer Point  
Photo: Mark Junge, 1977



**LAKE GUERNSEY STATE PARK**  
Guernsey vicinity,  
Platte County, Wyoming  
CCC Construction  
Photo: National Archives, R.G. 79,  
c. 1935



**LAKE GUERNSEY STATE PARK**  
Guernsey vicinity,  
Platte County, Wyoming  
Museum Building--interior  
Photo: Mark Junge, 1977





MUSEUM SETS.

LAKE GREENWICH STATE PARK N.H.L. NOMINATION  
PLATTE COUNTY, WY  
PHOTO - E. CARR 1994



ORIGINAL GUARDRAILS IN 1935

LAKE GUERNSEY STATE PARK (NRA now)

PLATTE Co., WYO

c. 1935

Photo © Wafu Archives, MID - RG-79



VIEW FROM THE "CASTLE"

LAKE GUERSEY STATE PARK NHL NOMINATION  
PLATTE COUNTY, WY

PHOTO - E. CARR 1994



CCC FOOTBRIDGE

LAKE GUERNEY STATE PARK NHL DISTRICT

PLATTE CITY, WY

PHOTO: MARK JUNKE, 1977





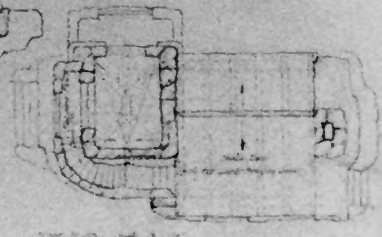
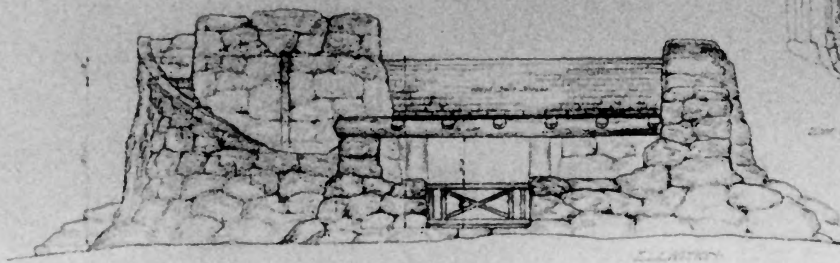
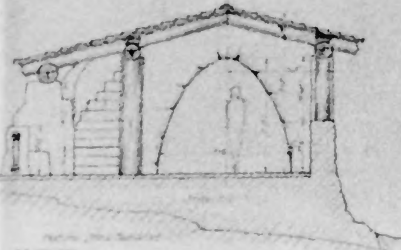
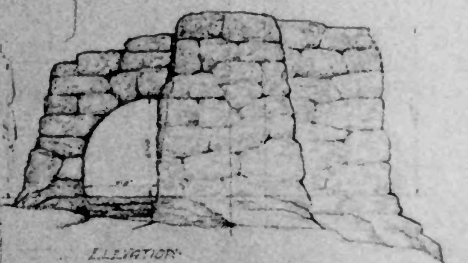
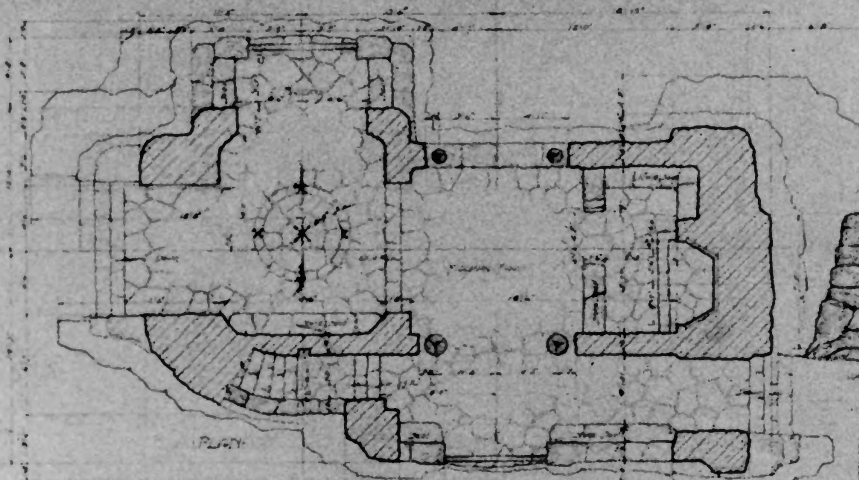
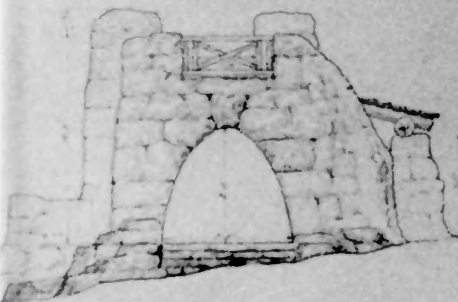
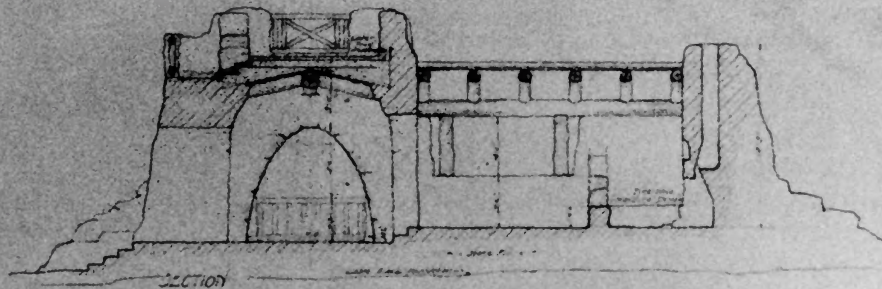
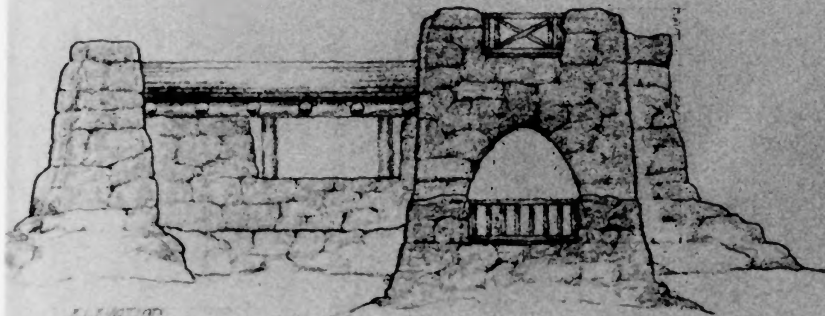
LAKE GUNNISEY STATE PARK WIL DISTRICT  
STEPS NEAR ALL FOOTBRIDGE  
PHOTO: MAX JONES, 1977



North Buff County Station  
(Museum District Building)

LAKE GUERNEY STATE PARK NAL DISTRICT  
PLATEAU CITY, WI.

PHOTO: MARK JUDGE, 1977



PICNIC SHELTER

<i>Kimball F. Jones</i> Architect	DEPARTMENT OF THE INTERIOR -
	NATIONAL PARK SERVICE -
	STATE TRAILHEADS CHANGING STATION
	PICNIC SHELTER IN
	JACK WALK CAMP, DRE-10
	GRAND CANYON

E. S. Mosher, DRAWING FOR THE "CASTLE". Ca. 1934  
LAKE GUERNSEY STATE PARK NHL DISTRICT  
PLATTE CO, WY  
COPYWORK: MARK JUNKE, 1977



LAKE GOVERNSLEY STATE PARK (NAC NOW)

PLATTE Co.; WYO

c. 1935

Photo © NATL ARCHIVES, MD - RG 79





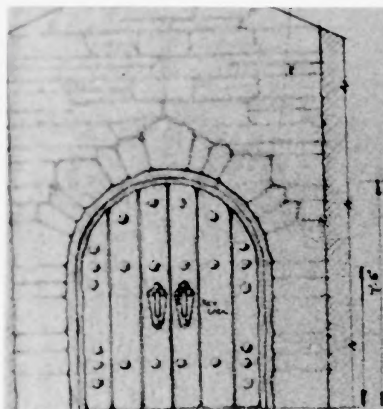
JOHN FWER  $\frac{1}{2}$  MUSEUM STAFF, ca. 1939

LAKE GUERUSEY STATE PARK NHL DISTRICT

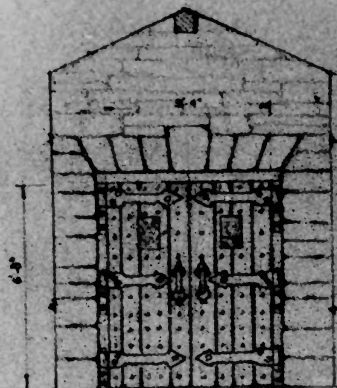
PLATTE CITY, WY

PHOTO: UNKNOWN

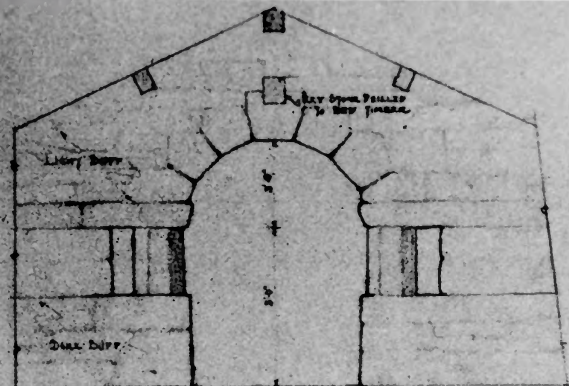
COPYWORK: MARK JUNGE, 1977



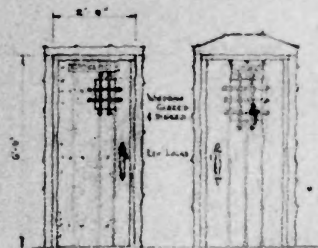
OUTSIDE ELEVATION FRONT ENTRANCE



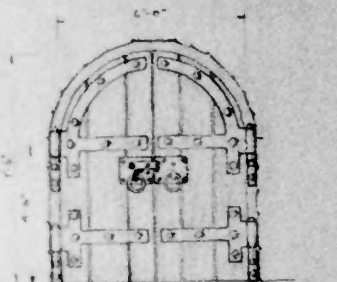
INSIDE ELEVATION SOUTH DOOR



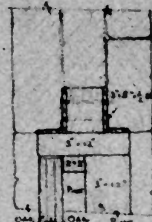
DOORWAY TO SOUTH WING



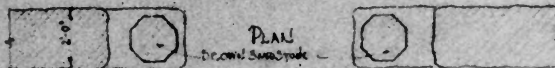
TOILET DOORS  
SCALE 1/2" = 1'-0"



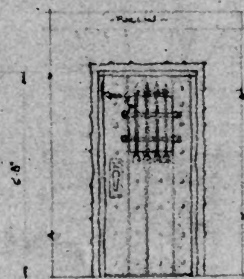
INSIDE ELEVATION FRONT ENTRANCE DOOR  
SCALE 1/2" = 1'-0"



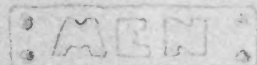
HEAD JAMB - SOUTH DOOR -  
SCALE 1/2" = 1'-0"



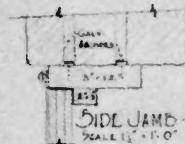
PLAN  
DOORWAY TO SOUTH WING



LIBRARY DOOR -  
JAMB SAME AS TOILETS -  
SCALE 1/2" = 1'-0"



HEAD PLATE - TOILETS CUT OUT -  
SCALE 1/2" = 1'-0"



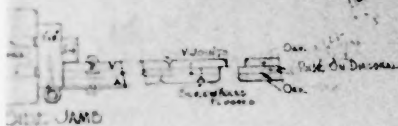
SIDE JAMB -  
SCALE 1/2" = 1'-0"

ITEM	QUANTITY	COST
DIMENSION LUMBER	1600	320.00
FINISH LUMBER	3000	540.00
MILL WORK		30.00
SHINGLES	4000	350.00
ROOFING FELT	4000	80.00
COPPER FLASHING	1000	20.00
CEMENT	2000	400.00
LIME	2000	60.00
FLUE LINING	6	7.00
FIRE BRICK	200	30.00
STEEL ANGLES		15.00
LOGS	4	15.00
SCREWS - BOLTS - LAGS		50.00
DAMPER	1	6.00
WALL TIES	40	4.00
NAILS	400	20.00
CAULKING - MENISH - PLUMBING -		15.00
PIPE	200'	20.00
CLOSETS	3	45.00
LAVATORIES	2	20.00
URINAL	1	20.00
FITTERS		20.00
PUMP (WATER)	1	50.00
ELECTRICAL EQUIPMENT		
TOTAL		2400.00

ITEM	LABOR	
	SHELL HOURS	ROLLERS HOURS
ELEVATION		5
STONE WORK	3	7 1/2
ROOF FRAMING	1	10
DOORS - WINDOWS - FINISH	1	10
HARDWARE		3
PLUMBING	1/2	1/2
WIRING	1/2	1/2
TOTAL	6	100 1/2

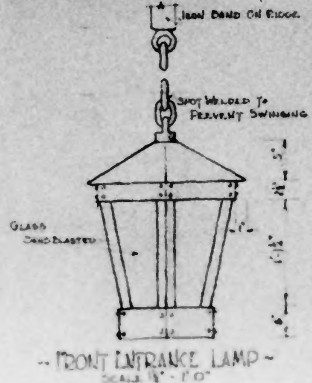
SHEET No. 6

ALL HARDWARE EXCEPT LOCKS TO BE BLACK IRON MADE UP ON JOBS WITH ROUGH HAMMERED SURFACE

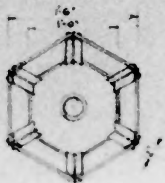


DOOR JAMB

JAMB TO BE ANGED DOWN TO BE HAND GLAZED



FRONT ENTRANCE LAMP -  
SCALE 1/2" = 1'-0"



DESIGNED BY  
*Kenneth F. Jones*  
ARCHITECT  
1000 BROADWAY, NEW YORK

DEPARTMENT OF THE INTERIOR  
NATIONAL PARK SERVICE  
STATE PARK EMERGENCY CONSERVATION WORK  
MUSEUM  
LARK SPRING, STATE PARK DISTRICT

DESIGNED BY  
*Edward D. Kelly*  
ARCHITECT  
1000 BROADWAY, NEW YORK

ROLAND PRATT, DRAWING FOR MUSEUM, ca. 1934

LAKE GUERASEY STATE PARK NATL DISTRICT  
PLATTE CITY, WI

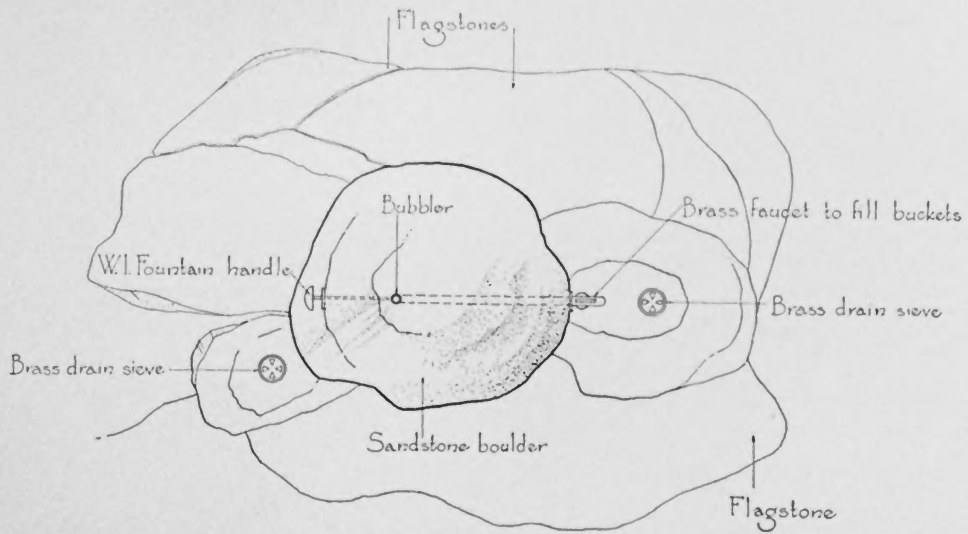
COPYWORK: MARK JUNGE, 1977

DRINKING FOUNTAINS • Plate I-1

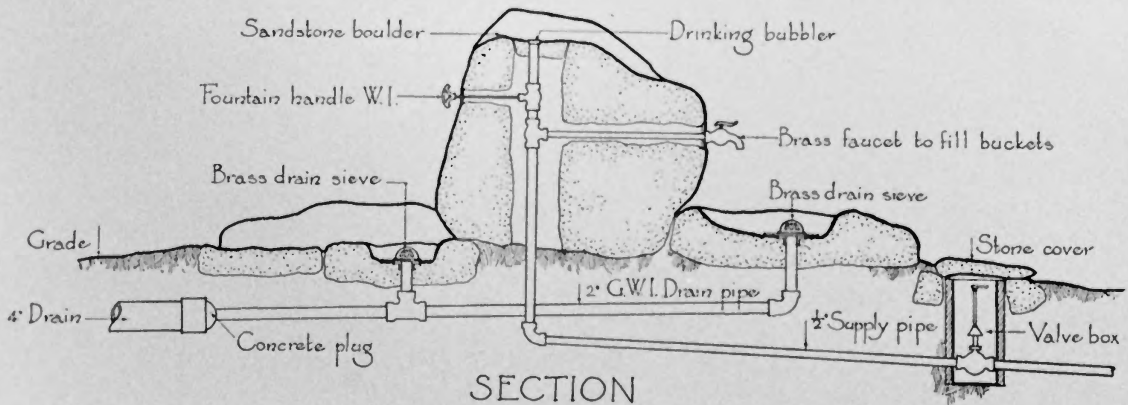


Drinking Fountain  
Lake Guernsey State Park - - - Wyoming

Here certainly is the peak accomplishment in naturalistic mas-  
king of a provision for bubbler and tap. It is a temptation  
hardly resistible to state that the rock was smitten with  
a rod and that the water gushed forth in the best biblical  
tradition. However the section drawing below evidences  
too plainly to the contrary - a laborious business of drilling  
and pipe fitting. Smiting with a rod would have been easier.



PLAN



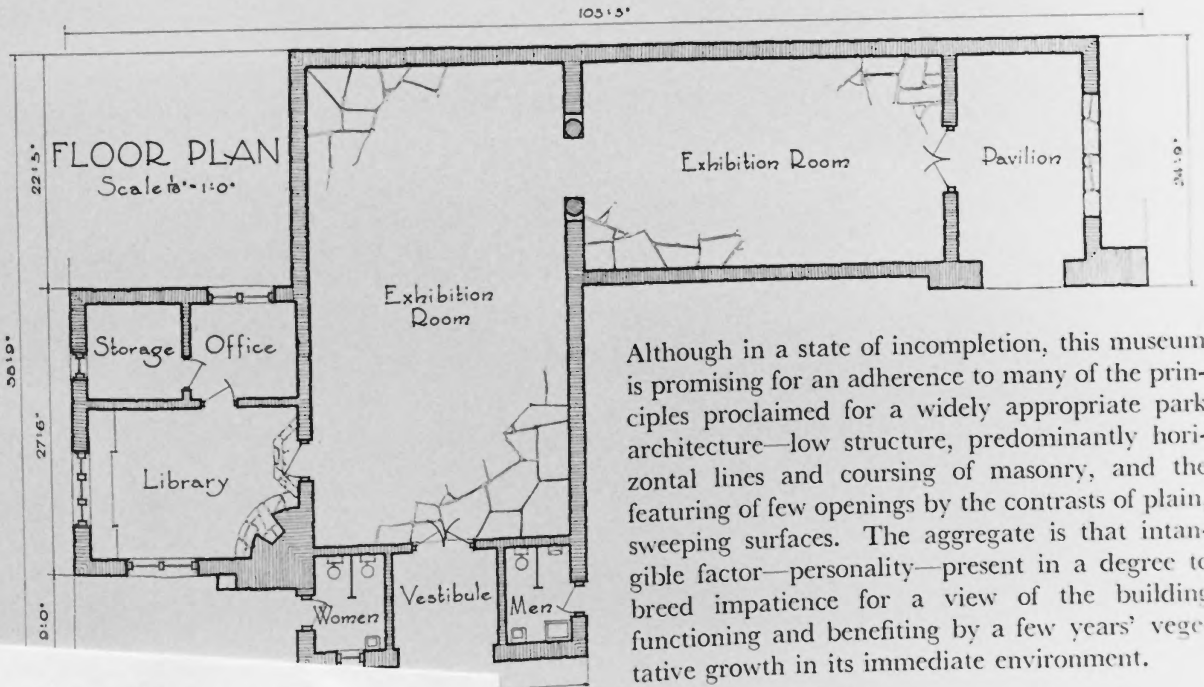
SECTION  
Scale  $\frac{3}{8}$ " = 1'-0"

UNITED STATES DEPARTMENT OF THE INTERIOR • NATIONAL PARK SERVICE

**LAKE GUERNSEY STATE PARK**  
Guernsey vicinity,  
Platte County, Wyoming  
Bubbler photo, plan & section  
From Good, *Park Structures &*  
*Facilities*, 1935



Museum, Lake Guernsey State Park, Wyoming



Although in a state of incompleteness, this museum is promising for an adherence to many of the principles proclaimed for a widely appropriate park architecture—low structure, predominantly horizontal lines and coursing of masonry, and the featuring of few openings by the contrasts of plain, sweeping surfaces. The aggregate is that intangible factor—personality—present in a degree to breed impatience for a view of the building functioning and benefiting by a few years' vegetative growth in its immediate environment.

**LAKE GUERNSEY STATE PARK**  
 Guernsey vicinity  
 Platte County, Wyoming  
 Museum Building  
 From *Good, Park Structures & Facilities*, 1935