



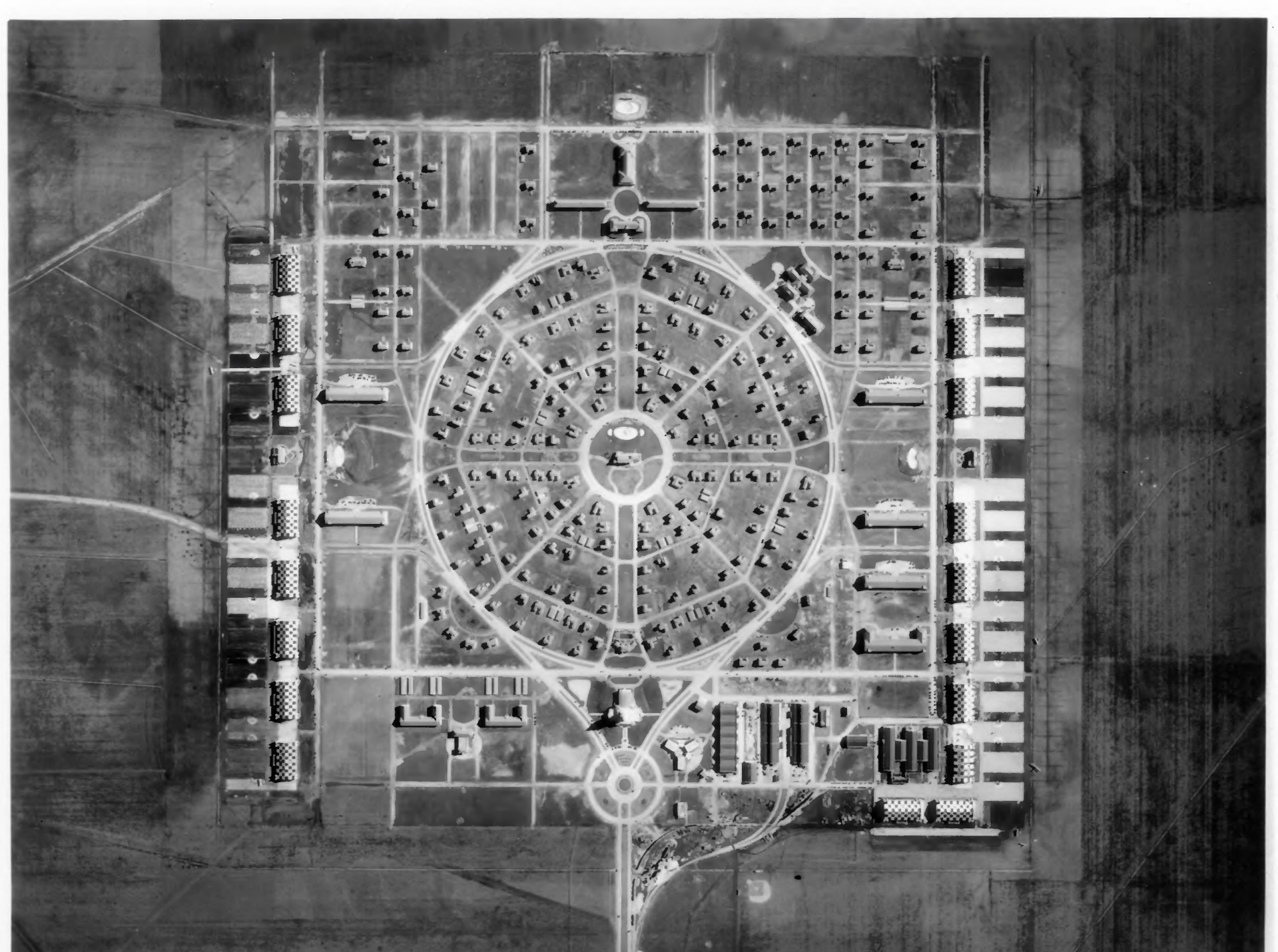
(O-298-467-J-22)(12-9-31-11A)(12-7000) - RANDOLPH FIELD - TEXAS - (LOOKING SOUTH)

1. RANDOLPH AFB TX

Aerial view of Randolph

from north west looking

South east



(V49-467J-20)(1-19-32-2P)(12-7500)

RANDOLPH FIELD TEXAS

2. ~~RAPOLOPH~~ AFB TX

Annual Report of Plan and Layout

1932

EL ECGING  
IMPACT

CLINIC  
PAPER



3. RANDOLPH AFB, TX  
Closeup aerial view of Randolph Field  
Administration Building looking  
southeast towards Flying Cadet Complex  
c. 1931



5. RANDOLPH AFB, TX

Flying Cadet Complex from southeast  
looking northeast, c. 1939





(G156-467J-20)(I-8-32-10A) CADET MESS

BLDG. 242 - RANDOLPH FIELD TEX.

6. RANDOLPH AFB, TX

Flying Cadet Administration Building  
(Cadet Mess) from southeast looking  
northeast, 1932



RANDOLPH AFB,

SCHOOL

School of Aviation Medicine,  
North facade, c. 1933



Aircraft flying over "Taj" during  
filming of "West Point of the Air"  
ca. 1934



Randolph Field Historic District  
Brew County, Texas  
photo No. 12

Streetscape, Outer Octagon,  
View of Facilitied 359 and  
358, towards southeast





Randolph Field Historic District

Lexar County, Texas

Photo No. 6

Detail of original multi-light  
casement window on Facility

900



224

THE  
WYLLIE  
BUILDING

Randolph Field Historic District  
Brewer County, Texas

Photo No. 1

View of shop or industrial  
area towards northeast



Powell Field Historic District

Brewer County, Texas

Photo No. 31

Facility 900, interior

Staircase



62

Princeton Field Historic District

Brewer County, Texas

Photo No. 45

Facility 60, view towards  
northeast