



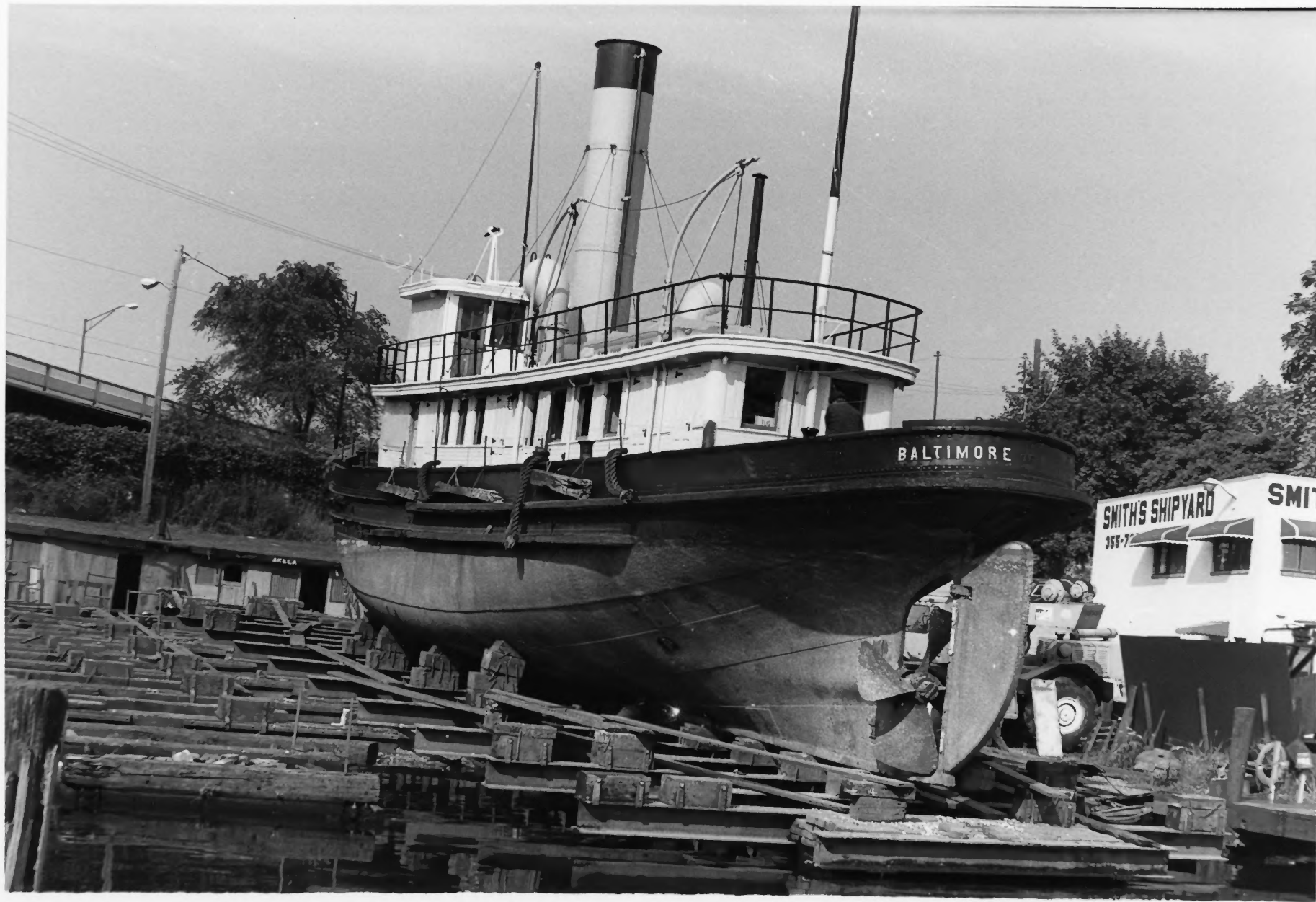
*Baltimore Harbor Inspection Tug
Baltimore City, Maryland
Broadside view at coal pier
Photo courtesy Baltimore Museum of Industry
photographer C.H. Echols, ca. 1988
Photo # 1*



Baltimore Harbor Inspection Tug
Baltimore City, Maryland
Bow quarter view at museum pier
National Park Service Photo by Candace Clifford, 1989
Photo # 2



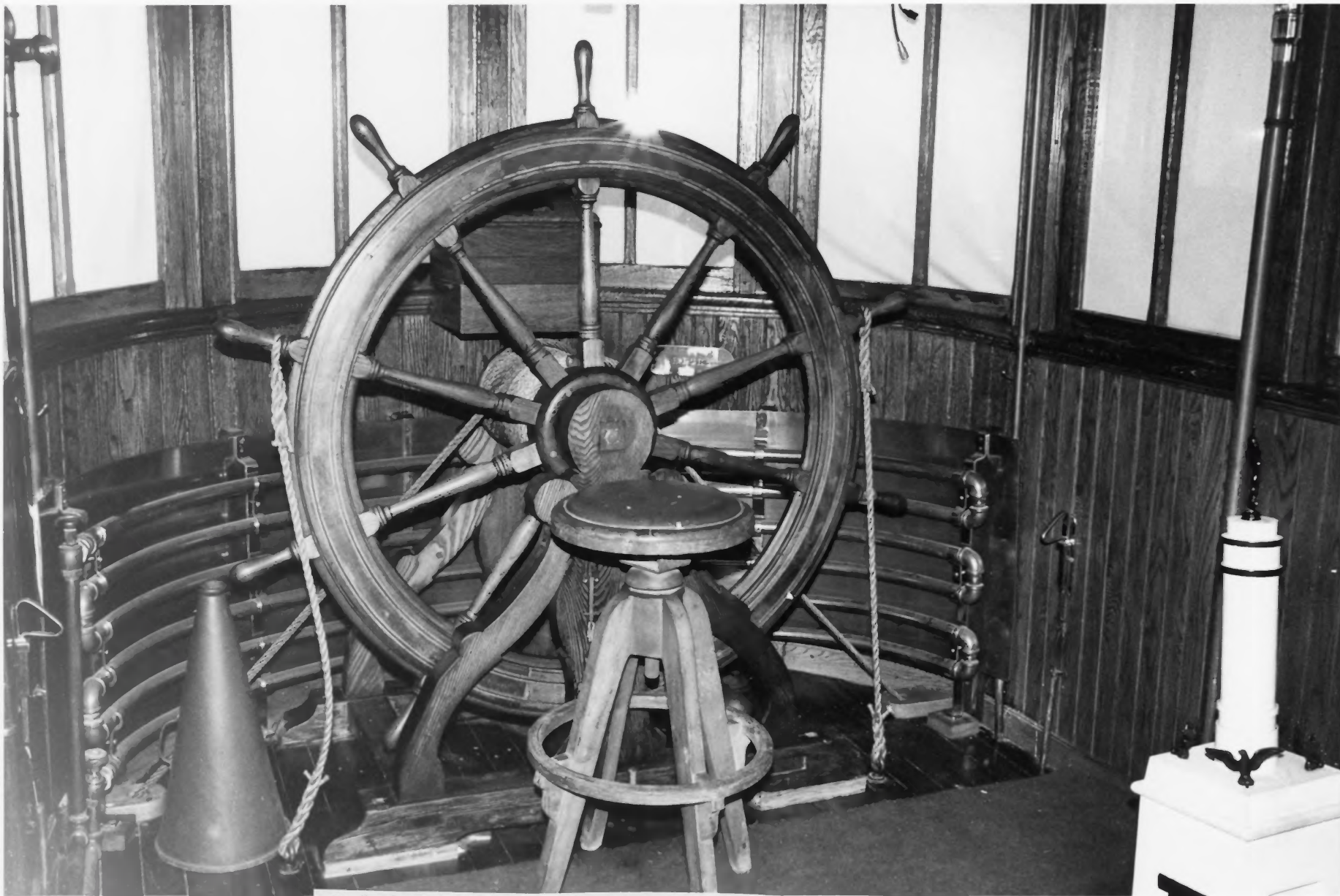
Baltimore Harbor Inspection Tug
Baltimore City, Maryland
Elevated broadside view on marine railway
Photo courtesy Baltimore Museum of Industry
photographer C.H. Echols, ca. 1989
Photo # 3



*Baltimore Harbor Inspection Tug
Baltimore City, Maryland
Stern quarter view on marine railway
Photo courtesy Baltimore Museum of Industry
photographer C.H. Echols, ca. 1989
Photo # 4*



*Baltimore Harbor Inspection Tug
Baltimore City, Maryland
Detail view of stern on marine railway
Photo courtesy Baltimore Museum of Industry
photographer C.H. Echols, ca. 1989
Photo # 5*



*Baltimore Harbor Inspection Tug
Baltimore City, Maryland
Interior of pilothouse looking forward
National Park Service Photo by Candace Clifford, 1989
Photo # 6*



Baltimore Harbor Inspection Tug
Baltimore City, Maryland
Detail of forward end of engine looking aft
National Park Service Photo by Candace Clifford, 1989
Photo # 7



*Baltimore Harbor Inspection Tug.
Baltimore City, Maryland
Starboard bow view showing tug blowing off steam
Photo courtesy Baltimore Museum of Industry
photographer C.H. Echols, ca. 1989
Photo # 8*