



ROHWER RELOCATION CENTER

ROHWER, ARKANSAS

PHOTOGRAPHED BY K. STORY

MAY, 1990

NEGATIVE ON FILE AT AHPP

VIEW FROM NORTH

1



②
Thomas Terry Moore
1874
Towes

ROMBER RELOCATION CENTER

ROMBER, ARKANSAS

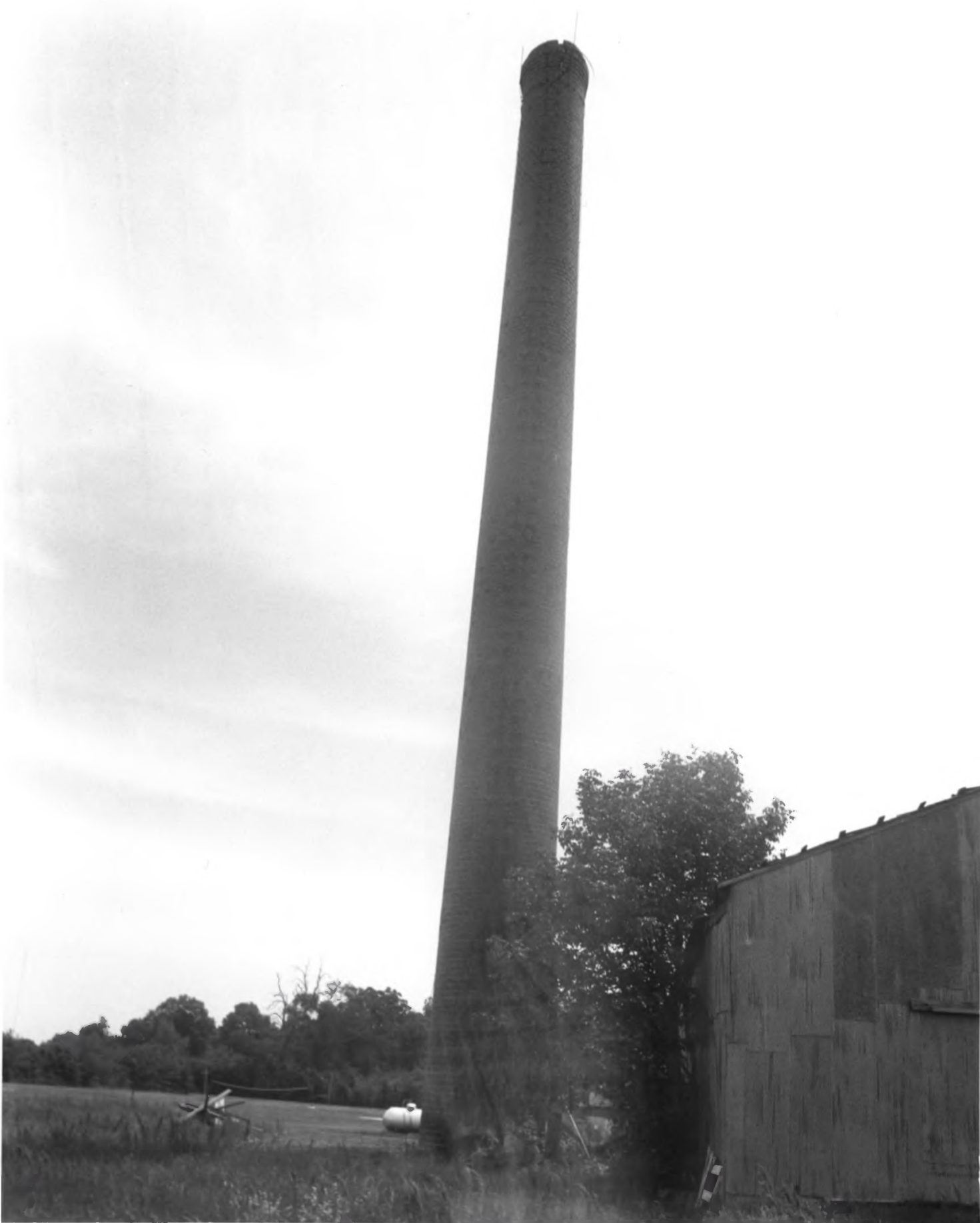
PHOTOGRAPHED BY K. STORY

MAY, 1990

NEGATIVE ON FILE AT ANPP

VIEW FROM EAST

1



ROWNER RELOCATION CENTER

ROWNER, ARKANSAS

PHOTOGRAPHED BY N. STORY

MAY, 1990

NEGATIVE ON FILE AT ANPP

VIEW FROM WEST

1



RONWER RELOCATION CENTER

RONWER, ARKANSAS

PHOTOGRAPHED BY K. STORY

MAY, 1990

NEGATIVE ON FILE AT ANPP

VIEW FROM WEST

* 1



BOWER RELOCATION CENTER

BOWER, ARKANSAS

PHOTOGRAPHED BY K. STORY

MAY, 1990

NEGATIVE ON FILE AT AHPP

VIEW FROM SOUTHWEST

1



POWER RELOCATION CENTER

POWER, ARKANSAS

PHOTOGRAPHED BY K. STORY

MAY, 1990

NEGATIVE ON FILE AT ANPP

SMOKESTACK DETAIL

1



POWER RELOCATION CENTER
POWER, ARKANSAS
PHOTOGRAPHED BY K. STORY
MAY, 1990

NEGATIVE ON FILE AT AHPP
VIEW FROM SOUTHWEST
#2



POWER RELOCATION CENTER

POWER, ARKANSAS

PHOTOGRAPHED BY K. STORY

MAY, 1990

NEGATIVE ON FILE AT ANPP

VIEW FROM NORTHWEST OF LAUNDRY BLDG.

#2



ROWLER RELOCATION CENTER

ROWLER, ARKANSAS

PHOTOGRAPHED BY K. STORY

MAY, 1990

NEGATIVE ON FILE AT ANPP

VIEW FROM SOUTHWEST OF LAUNDRY BLDG.

* 2



BOMBER RELOCATION CENTER

BOMBER, ARKANSAS

PHOTOGRAPHED BY K. STORY

MAY, 1990

NEGATIVE ON FILE AT ANAP

VIEW FROM NORTHEAST

#2



POMPER RELOCATION CENTER

POMPER, ARKANSAS

PHOTOGRAPHED BY K. STORY

MAY, 1990

NEGATIVE ON FILE AT AHPP

VIEW FROM THE NORTHWEST OF LAUNDRY BLDG.

*2



ROWLER RELOCATION CENTER

ROWLER, ARKANSAS

PHOTOGRAPHED BY K. STORY

MAY, 1990

NEGATIVE ON FILE AT AHPP

VIEW OF LAUNDRY BLDG. FROM

SOUTHEAST

#2



ROWNER RELOCATION CENTER

ROWNER, ARKANSAS

PHOTOGRAPHED BY K. STORY

MAY, 1990

NEGATIVE ON FILE AT ANPP

VIEW OF INTERIOR WALL

#2



STYLIZED TAGS

81

STYLIZED TAGS

HEART SYMBOL

WESLEY

HORN
KAREN
Gloria



POWER RELOCATION CENTER

POWER, ARKANSAS

PHOTOGRAPHED BY K. STORY

MAY, 1990

NEGATIVE ON FILE AT AHPP

VIEW ~~FROM~~ OF INTERIOR

*2



BOWEN RELOCATION CENTER

BOWEN, ARKANSAS

PHOTOGRAPHED BY K. STORY

MAY, 1990

NEGATIVE ON FILE AT ANPP

VIEW FROM WEST OF INTERIOR

#2



ROWNER RELOCATION CENTER

ROWNER, ARKANSAS

PHOTOGRAPHED BY K. STORY

APRIL, 1990

NEGATIVE ON FILE AT ANPP

VIEW FROM EAST

* 3



ROHWER RELOCATION CENTER
ROHWER, ARKANSAS

PHOTOGRAPHED BY K. STORY

APRIL, 1990

NEGATIVE ON FILE AT AHPP
FOUNDATION SLAB DETAIL

#5



ROMWER RELOCATION CENTER

ROMWER, ARKANSAS

PHOTOGRAPHED BY K. STORY

APRIL, 1990

NEGATIVE ON FILE AT ANPP

FOUNDATION DETAIL

5



POWER RELOCATION CENTER

POWER, ARKANSAS

PHOTOGRAPHED BY K. STORY

APRIL, 1990

NEGATIVE ON FILE AT ANPP

MESS HALL FOUNDATION DETAIL

5



ROHWER RELOCATION CENTER

ROHWER, ARKANSAS

PHOTOGRAPHED BY K. STORY

APRIL, 1990

NEGATIVE ON FILE AT AHPP

MESS HALL FOUNDATION DETAIL

5



ROHWER RELOCATION CENTER MEMORIAL CEMETERY
Rohwer, Arkansas
Soldier's Memorial from Northwest
Photo by A. Albright, April 1990



IN MEMORY OF ALL THOSE
WHO SACRIFICED THEIR
LIVES IN THE SERVICE
OF THEIR COUNTRY. THEY
FOUGHT FOR FREEDOM.
THEY DIED SO THE
WORLD MIGHT HAVE
PEACE.

EDWARD S. WILSON
PROVED, MISSOURI

OCT 24 1943

100,442

POHNER RELOCATION CENTER

POHNER, ARKANSAS

PHOTOGRAPHED BY A. ALBRIGHT

APRIL, 1990

NEGATIVE ON FILE AT ANPP

VIEW FROM EAST OF VETERAN'S MONUMENT

6



ROHWER RELOCATION CENTER MEMORIAL CEMETERY
Rohwer, Arkansas
Detail of Base of Soldier's Memorial
Photo by A. Albright, April 1990

WHO SACRIFICED THEIR
LIVES IN THE SERVICE
OF THEIR COUNTRY. THEY
FOUGHT FOR FREEDOM,
THEY DIED THAT THE
WORLD MIGHT HAVE
PEACE

EDWARD B. MOULTON
ASSISTANT
PROJECT DIRECTOR

OCT 20 1945

ROMWER RELOCATION CENTER

ROMWER, ARKANSAS

PHOTOGRAPHED BY A. ALBRIGHT

APRIL, 1990

NEGATIVE ON FILE AT ANPP

DETAIL OR SCRIPT

#6



ROHWER RELOCATION CENTER MEMORIAL CEMETERY
Rohwer, Arkansas
Evacuee's Memorial
Photo by K. Story, May 1990



治信人遠慰靈風

1864



BOHNER RELOCATION CENTER

BOHNER, ARKANSAS

PHOTOGRAPHED BY A. ALBRIGHT

APRIL, 1990

NEGATIVE ON FILE AT AHPP

VIEW FROM WEST OF VETERAN'S
MONUMENT

7



ROHWER RELOCATION CENTER

ROHWER, ARKANSAS

PHOTOGRAPHED BY A. ALBRIGHT

APRIL, 1990

NEGATIVE ON FILE AT AHPP

VIEW FROM EAST OF EVACUEE'S

MONUMENT

7



ROHWER RELOCATION CENTER MEMORIAL CEMETERY

Rohwer, Arkansas

Detail of Eagleon Evacuee's Memorial

Photo by A. Albright, April 1990



時是昭和十九年歲在甲申八月此碑之建立
 地之眠火和民族之精靈對之久遠之真
 福祿之鳴呼悲哉 無所和收容所 所民同

ERECTED BY THE
 INHABITANTS OF RO
 HWER RELOCATION
 CENTER

BOMWER RELOCATION CENTER

BOMWER, ARKANSAS

PHOTOGRAPHED BY A. ALBRIGHT

APRIL, 1980

NEGATIVE ON FILE AT ANPP

DETAIL OF SCRIPT

* 7

薄信久遠感靈



ROWNER
RELOCATION
CENTER
PROJECT
DIRECTOR
RAY D
JOHNSTON
AND
JOSEPH
B HUNTER

BONWER RELOCATION CENTER

BONWER, ARKANSAS

PHOTOGRAPHED BY A. ALBRIGHT

APRIL, 1990

NEGATIVE ON FILE AT ANPP

DETAIL OF INSCRIPTIONS

#3

ERECTED BY THE
INHABITANTS OF RO
HWER RELOCATION
CENTER
OCTOBER 1944

ROHWER RELOCATION CENTER MEMORIAL CEME.
Rohwer, Arkansas
Detail of Evacuee's Memorial
Photo by A. Albright, April 1990

TO HIM WHO SLEEPS
ETERNALLY HERE
A DESCENDANT OF
GLORIOUS YAMATO
WHO CAME IN HIS
PRIME WITH HOPES
AND AMBITIONS
HEROIC TO BATTLE
THE FORTUNES OF
LIFE PEACE AND
BLISS BE YOURS

1944

ROWLER RELOCATION CENTER

ROWLER, ARKANSAS

PHOTOGRAPHED BY A. ALBRIGHT

APRIL, 1990

NEGATIVE ON FILE AT ANPP

VIEW FROM WEST

#7



ROHWER RELOCATION CENTER MEMORIAL CEMETERY

Rohwer, Arkansas

Close-up of base of Evacuee's Memorial

Photo by A. Albright, April 1990

BOMBER RELICICATION CENTER

BOMBER, ARKANSAS

PHOTOGRAPHED BY A. ALBRIGHT

APRIL, 1980

NEGATIVE ON FILE AT AMPP

VIEW FROM NORTH

* 7



BONNER RELOCATION CENTER

BONNER, ARIZONA

PHOTOGRAPHED BY A. ALBRIGHT

APRIL, 1990

NEGATIVE ON FILE AT ANPP

VIEW OF CEMETERY FROM WEST



RONWER RELOCATION CENTER
RONWER, ARKANSAS
PHOTOGRAPHED BY K. STORY
MAY, 1990

NEGATIVE ON FILE AT RHPP
VIEW FROM SOUTH OF NON-CONTRIBUTING
STRUCTURES ADJACENT TO SCHOOL
(REPRESENTATIVE STREETScape)

JOHN W. BRY
CENTRAL
CMENTERY
1894

RONWER RELOCATION CENTER

RONWER, ARKANSAS

PHOTOGRAPHED BY A. ALBRIGHT

APRIL, 1990

NEGATIVE ON FILE AT AHPP

ENTRANCE MARKER DETAIL



POWER RELOCATION CENTER

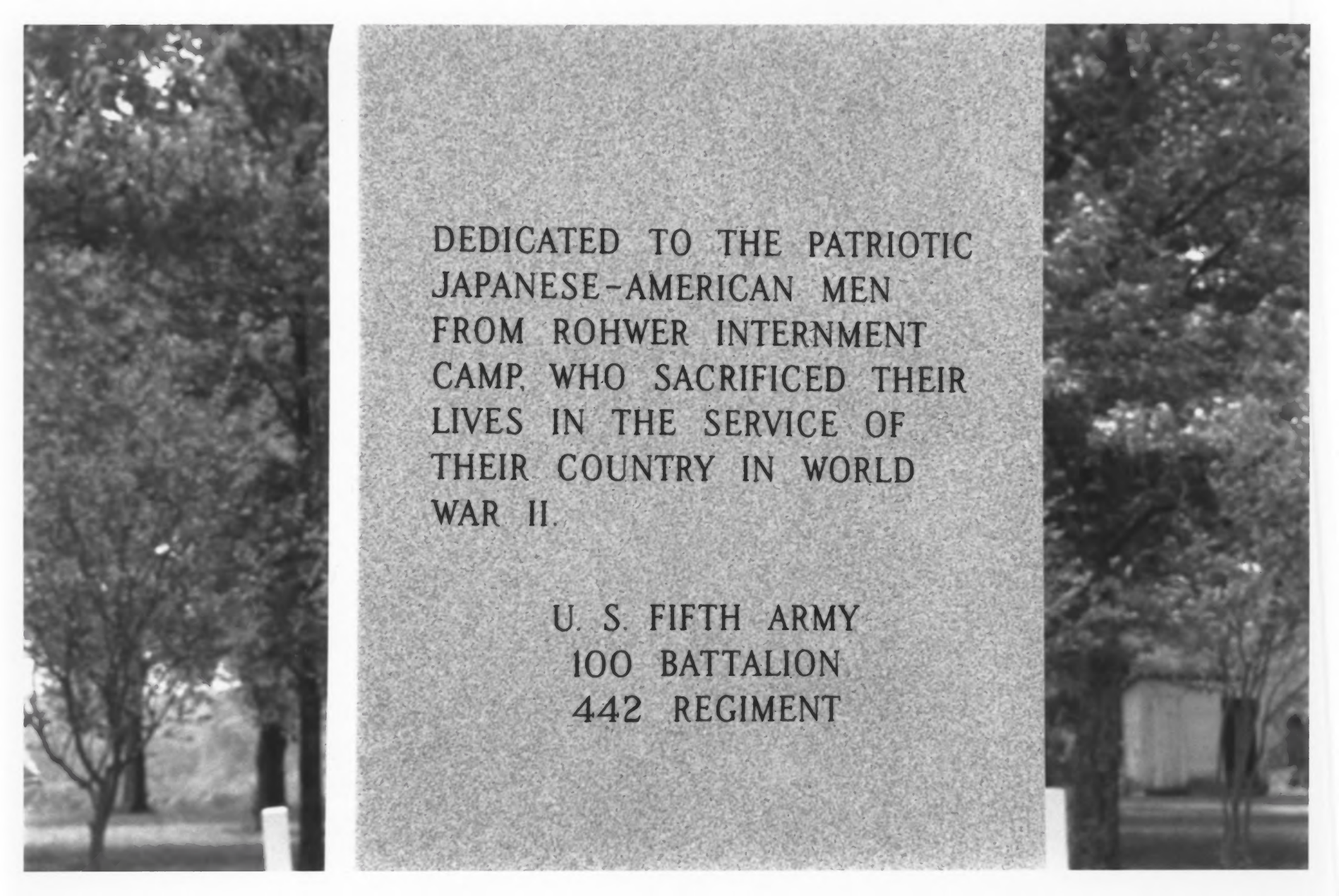
POWER, ARKANSAS

PHOTOGRAPHED BY A. ALBRIGHT

APRIL, 1980

NEGATIVE ON FILE AT ANPP

DETAIL OF WALKWAYS



DEDICATED TO THE PATRIOTIC
JAPANESE-AMERICAN MEN
FROM ROHWER INTERNMENT
CAMP, WHO SACRIFICED THEIR
LIVES IN THE SERVICE OF
THEIR COUNTRY IN WORLD
WAR II.

U. S. FIFTH ARMY
100 BATTALION
442 REGIMENT

ROWER RELOCATION CENTER

ROWER, ARKANSAS

PHOTOGRAPHED BY A. ALBRIGHT

APRIL, 1980

NEGATIVE ON FILE AT ANPP

VIEW FROM EAST OF NEW-CONTRIBUTING
MONUMENT



POWER RELOCATION CENTER

POWER, ARKANSAS

PHOTOGRAPHED BY K. STORY

MAY, 1990

NEGATIVE ON FILE AT ANPP

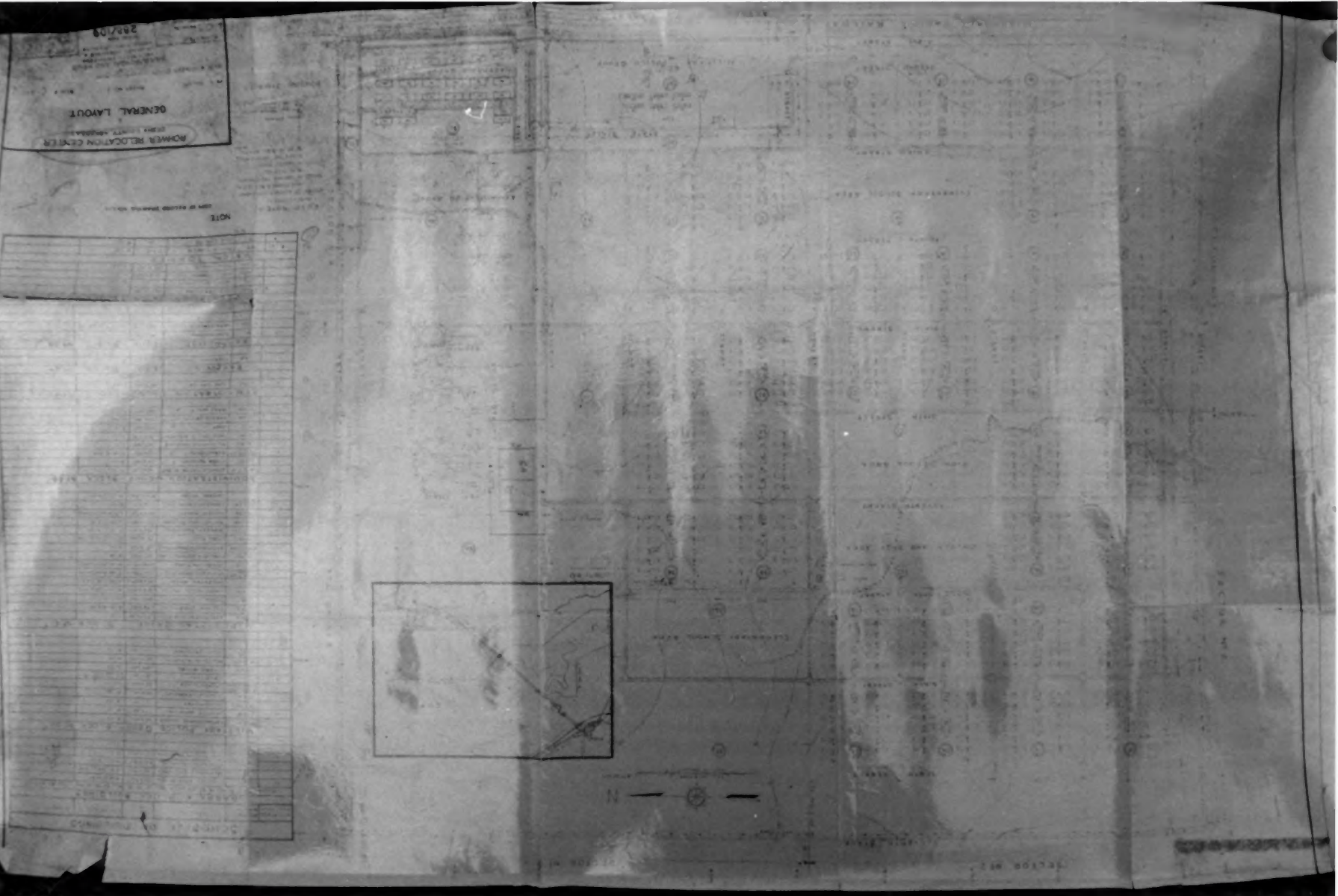
VIEW FROM SOUTHEAST OF MAIN
HIGH SCHOOL BLDG.

287/09

POWER RELOCATION CENTER GENERAL LAYOUT

NOTE
DATE OF REVISION: 1964-10-15

NO.	REVISION	DATE	BY	DESCRIPTION
1				
2				
3				
4				
5				
6				
7				
8				
9				
10				
11				
12				
13				
14				
15				
16				
17				
18				
19				
20				
21				
22				
23				
24				
25				
26				
27				
28				
29				
30				
31				
32				
33				
34				
35				
36				
37				
38				
39				
40				
41				
42				
43				
44				
45				
46				
47				
48				
49				
50				
51				
52				
53				
54				
55				
56				
57				
58				
59				
60				
61				
62				
63				
64				
65				
66				
67				
68				
69				
70				
71				
72				
73				
74				
75				
76				
77				
78				
79				
80				
81				
82				
83				
84				
85				
86				
87				
88				
89				
90				
91				
92				
93				
94				
95				
96				
97				
98				
99				
100				



ROWNER RELOCATION CENTER

ROWNER, ARKANSAS

PHOTOGRAPHED BY K. STORY

APRIL, 1990

NEGATIVE ON FILE AT ANPP

ORIGINAL PLAN FOR ROWNER CENTER



37



ELEMENTARY SCHOOL AREA

36

35

38

VICINITY MAP
KORNIC CHALK

46

WEST STREET

SECTOR NO. 3

NO. OF PLOTS IN	
SECTOR NO. 3	
BLOCK	
1	1
1	2
1	3
1	4
1	5
1	6
1	7
1	8
1	9
1	10
1	11
1	12
1	13
1	14
1	15
1	16
1	17
1	18
1	19
1	20
1	21
1	22
1	23
1	24
1	25
1	26
1	27
1	28
1	29
1	30
1	31
1	32
1	33
1	34
1	35
1	36
1	37
1	38
1	39
1	40
1	41
1	42
1	43
1	44
1	45
1	46
1	47
1	48
1	49
1	50
1	51
1	52
1	53
1	54
1	55
1	56
1	57
1	58
1	59
1	60
1	61
1	62
1	63
1	64
1	65
1	66
1	67
1	68
1	69
1	70
1	71
1	72
1	73
1	74
1	75
1	76
1	77
1	78
1	79
1	80
1	81
1	82
1	83
1	84
1	85
1	86
1	87
1	88
1	89
1	90
1	91
1	92
1	93
1	94
1	95
1	96
1	97
1	98
1	99
1	100

ROHWER RELOCATION CENTER

ROHWER, ARKANSAS

PHOTOGRAPHED BY K. STORY

NEGATIVE ON FILE AT AHPP

APRIL, 1990

ORIGINAL CAMP PLAN; DETAIL OF
VICINITY MAP



ROWER RELOCATION CENTER

ROWER, ARKANSAS

PHOTOGRAPHED BY K. STORY

MAY, 1990

NEGATIVE ON FILE AT AHPP

VIEW FROM NORTHWEST OF DELTA
HIGH SCHOOL COMPLEX



POWER RECREATION CENTER

POWER, ARKANSAS

PHOTOGRAPHED BY K. STODY

MAY, 1990

NEGATIVE ON FILE AT ANPP

VIEW OF DELTA HIGH SCHOOL

ATHLETIC FIELD FROM NORTH



LOYALTY

JAPANESE-AMERICAN CREED

I AM AN AMERICAN OF JAPANESE ANCESTRY AND APPRECIATE THE ADVANTAGES OF OUR NATION. I GLORY IN HER HERITAGE. I TRUST IN HER FUTURE. WE ARE GRANTED LIBERTIES AND OPPORTUNITIES GREATER THAN ANYWHERE IN THE WORLD. WE ARE ENTRUSTED WITH THE RESPONSIBILITIES OF THE FRANCHISE; PERMITTED TO BUILD A HOME; TO EARN A LIVELIHOOD; TO WORSHIP, THINK, SPEAK AND ACT AS WE PLEASE -- AS A FREE MAN.

AFTER PEARL HARBOR, A WAVE OF HYSTERIA SWEEPED THE COUNTRY AND NEARLY 112,000 JAPANESE-AMERICAN CITIZENS CAME UNDER SUSPICION AS TO THEIR LOYALTY TO THE UNITED STATES. AS A RESULT, PRESIDENT FRANKLIN D. ROOSEVELT ESTABLISHED THE WAR RELOCATION AUTHORITY BY EXECUTIVE ORDER NO. 9066 ON MAY 18, 1942, WITH THE POWER TO RELOCATE AND INTERN THOSE PEOPLE OF JAPANESE ANCESTRY RESIDING ON THE WEST COAST OF THE UNITED STATES.

UNDER THE AUSPICES OF THE WAR RELOCATION AUTHORITY, THE ROHWER RELOCATION CENTER WAS ESTABLISHED ON SEPTEMBER 18, 1942. THE FIRST OF SOME 8,500 JAPANESE-AMERICANS ARRIVED AT ROHWER FOR INTERNMENT ON THAT DATE.

IN FEBRUARY, 1943, THE U. S. ARMY ESTABLISHED THE FAMED 100TH BATTALION AND THE 442ND REGIMENTAL COMBAT TEAM, AN ALL NISEI UNIT. THIS UNIT SERVED WITH GREAT VALOR AND DISTINGUISHED ITSELF IN THE EUROPEAN THEATRE. IRONICALLY, THE FAMILIES OF THIS UNIT REMAINED INTERNED.

WE ARE PROUD TO REMEMBER THAT THE 100TH BATTALION AND THE 442ND REGIMENT WERE THE MOST HIGHLY DECORATED OF ALL UNITS DURING WWII. THE MOST COURAGEOUS AND NOTABLE BATTLES FOUGHT BY THE UNITS INCLUDED THOSE AT SALERNO, ANZIO AND CASSINO, AS WELL AS THE RESCUE OF THE TEXAS "LOST BATTALION".

IT SHOULD BE REMEMBERED THAT DURING THE INTERNMENT YEARS, THOUSANDS OF JAPANESE-AMERICANS VOLUNTEERED OR WERE DRAFTED TO SERVE IN MILITARY INTELLIGENCE OPERATIONS IN THE PACIFIC WAR WITH JAPAN. THREE DECADES FOLLOWING THE END OF WWII INFORMATION WAS FINALLY MADE PUBLIC WHICH DESCRIBED THE VALOR AND COURAGE EXHIBITED BY THESE INDIVIDUALS AND THEIR SECRET CONTRIBUTIONS TO THE PACIFIC VICTORY.

AT THE END OF WWII, ON NOVEMBER 30, 1945, THE LAST JAPANESE-AMERICAN LEFT ROHWER, ENDING 3 1/2 YEARS OF INTERNMENT.

THIS MEMORIAL IS ALSO DEDICATED TO THE MEMORY OF THE MANY JAPANESE-AMERICANS FROM ROHWER THAT GAVE THEIR LIVES THAT OTHERS MIGHT ENJOY THE FREEDOMS WHICH THEY AND THEIR FAMILIES WERE DENIED.

POHWER RELOCATION CENTER

POHWER, ARKANSAS

PHOTOGRAPHED BY A. ALBRIGHT

APRIL, 1990

NEGATIVE ON FILE AT AHPP

VIEW FROM WEST OF

NON-CONTRIBUTING MONUMENT



COURAGE



DEDICATED TO THE PATRIOTIC
JAPANESE-AMERICAN MEN
FROM ROHWER INTERNMENT
CAMP WHO SACRIFICED THEIR
LIVES IN THE SERVICE OF
THEIR COUNTRY IN WORLD
WAR II.

U. S. FIFTH ARMY
100 BATTALION
442 REGIMENT

CASSINO



ANZIO

POHNER RELOCATION CENTER

BOHNER, ARKANSAS

PHOTOGRAPHED BY A. ALBRIGHT

APRIL, 1980

NEGATIVE ON FILE AT AHPP

VIEW FROM EAST OF NON-CONTRIBUTING
MONUMENT



ROWER RELOCATION CENTER

ROWER, ARKANSAS

PHOTOGRAPHED BY K. STORY

MAY, 1980

NEGATIVE ON FILE AT ANPP

VIEW OF DELTA HIGH SCHOOL

GYMNASIUM FROM NORTHEAST



ROWNER RELOCATION CENTER

ROWNER, ARKANSAS

PHOTOGRAPHED BY K. STORY

MAY, 1990

NEGATIVE ON FILE AT ANPP

VIEW FROM NORTH OF NEW-

CONTRIBUTING RESIDENCES AT

SOUTHERN END OF SCHOOL SITE

SECTOR NO. 4

5
1
62

NO.	DESCRIPTION	QUANTITY	UNIT
1	WATER PUMPING STATION	1	ST
2	WELL HOUSE	12' x 16'	A-100
WATCH TOWERS			
3	WATCH TOWER	2' x 2'	A-100
4	COAL STORAGE	—	R-100

NOTE:

COPY OF RECORD DRAWING NO. L-1.

Handwritten scribble

ROAD NOTES:

- INDICATIONS:
- 1. SURFACE TREATMENT
ALSO PAVING & WIRE ASPHALT
- 2. SURFACE TREATMENT
ALSO PAVING
- 3. GRAVEL ROAD
- ROADS NOT IDENTIFIED
TO BE 12' DIRT ROADS.

BLDG. NUMBER	PORTION ATTACHED
1	INDICATED
2	INDICATED

BUILDING SYMBOLS

ROHWER RELOCATION CENTER
DESHA COUNTY, ARKANSAS

GENERAL LAYOUT

IN 1 SHEET

SHEET NO. 1

SCALE 1" = 200'

D. S. ENGINEER OFFICE - MEMPHIS, MISSISSIPPI

NEILO, BOMDAL AND NEILO
ARCHITECT - ENGINEERS
MEMPHIS, ARKANSAS &
SHREVEPORT, LOUISIANA

SUBMITTED

Signature
ARCHITECT - ENGINEER

SERIAL 4508
288/109

APPROVED
Signature
ARCHITECT - ENGINEER



POWNER RELOCATION CENTER

POWNER, ARKANSAS

PHOTOGRAPHED BY N. STORY

MAY, 1990

NEGATIVE ON FILE AT ANHP

DETAIL OF TITLE BLOCK,

ORIGINAL CENTER PLAN



ROHWER RELOCATION CENTER MEMORIAL CEMETERY

Rohwer, Arkansas

Memorial Cemetery from North

Photo by A. Albright, April 1990



ROHWER RELOCATION CENTER MEMORIAL CEMETERY
Rohwer, Arkansas
Christian Gravestone
Photo by A. Albright, April 1990



ROHWER RELOCATION CENTER MEMORIAL CEMETERY

Rohwer, Arkansas

Buddist or Shinto Gravestone

Photo by A. Albright, April 1990



1
ROWLER RELOCATION CENTER
ROWLER, ARKANSAS

PHOTOGRAPHED BY K. STORY
MAY, 1990

NEGATIVE ON FILE AT AHP

VIEW OF DELTA HIGH SCHOOL

SHOP BLOC. FROM NORTH (NON-CONTRIBUTING)



POHNER RELOCATION CENTER

POHNER, ARKANSAS

PHOTOGRAPHED BY K. STORY

MAY, 1990

NEGATIVE ON FILE AT AHPP

VIEW LOOKING EAST OF

REPRESENTATIVE NON-CONTRIBUTING
RESIDENCES