

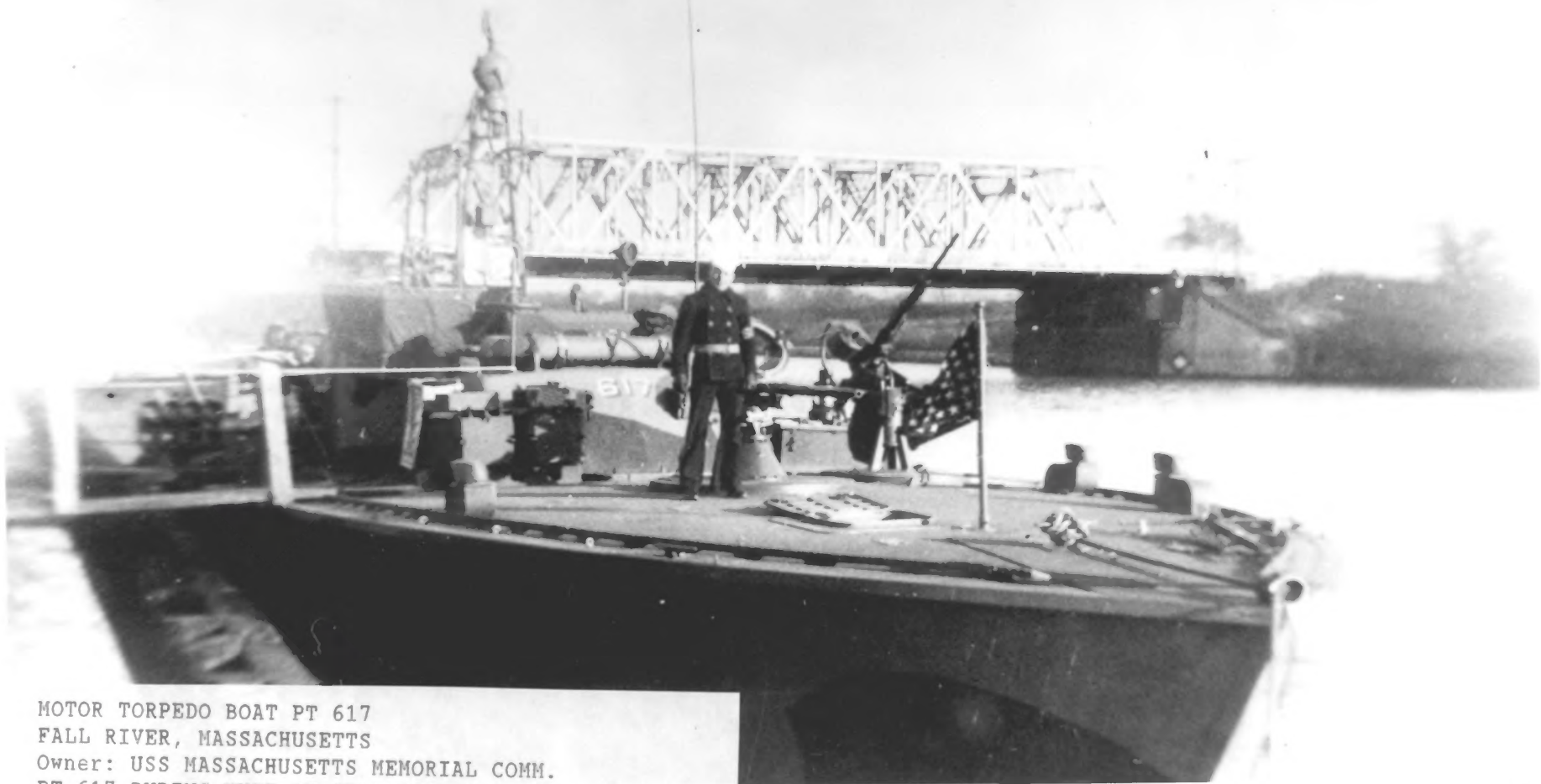


MOTOR TORPEDO BOAT PT 617
FALL RIVER, MASSACHUSETTS
Owner: USS MASSACHUSETTS MEMORIAL COMM.
TYPICAL LATE WAR ELCO PT 603, IDENTICAL
TO PT 617.

Photo #1 by ELCO NAVAL DIVISION, 1945
Courtesy of: PT BOATS, INC.



MOTOR TORPEDO BOAT PT 617
FALL RIVER, MASSACHUSETTS
Owner: USS MASSACHUSETTS MEMORIAL COMM.
AN ELCO PT BOAT LAYS DOWN A SMOKE SCREEN
DURING MANUEVERS AT QUONSET POINT, R.I.
Photo #2 by OFFICIAL US NAVY PHOTOGRAPH. 194
Courtesy of: PT BOATS, INC.



MOTOR TORPEDO BOAT PT 617
FALL RIVER, MASSACHUSETTS
Owner: USS MASSACHUSETTS MEMORIAL COMM.
PT 617 DURING WWII AT HERKIMER, N.J.
QM3C GREGORY AT THE BOW.
Photo #3 by RALPH BIGELOW, 1945
Courtesy of: PT BOATS. INC.



MOTOR TORPEDO BOAT PT 617
FALL RIVER, MASSACHUSETTS
Owner: USS MASSACHUSETTS MEMORIAL COMM.
COCKPIT, RADAR MAST, AND TWIN .50 CAL.
MOUNTS.
Photo #5 by JAMES P. DELGADO, 1989
Courtesy of: NATIONAL PARK SERVICE



MOTOR TORPEDO BOAT PT 617
FALL RIVER, MASSACHUSETTS
Owner: USS MASSACHUSETTS MEMORIAL COMM.
ELCO THROTTLES IN THE COCKPIT OF PT 617.
Photo #6 by JAMES P. DELGADO, 1989
Courtesy of: NATIONAL PARK SERVICE



MOTOR TORPEDO BOAT PT 617
FALL RIVER, MASSACHUSETTS
Owner: USS MASSACHUSETTS MEMORIAL COMM.
ORIGINAL BUILDER'S PLATE AND SQUADRON 42
INSIGNIA ABOARD PT 617.
Photo #7 by JAMES P. DELGADO, 1989
Courtesy of: NATIONAL PARK SERVICE