



DUWAMISH, Seattle, Washington
Photo by James P. Delgado, 1988 (NPS)
Seattle Fire Department
Port bow view. Photo #1



DUWAMISH, Seattle, Washington
Photo by James P. Delgado, 1988 (NPS)
Seattle Fire Department
Outboard profile. Photo #2



DUWAMISH, Seattle, Washington
Photo by James P. Delgado, 1988 (NPS)
Seattle Fire Department
Trunk deck, showing monitors and stack.
Photo #3



DUWAMISH, Seattle, Washington

Photo by James P. Delgado, 1988 (NPS)

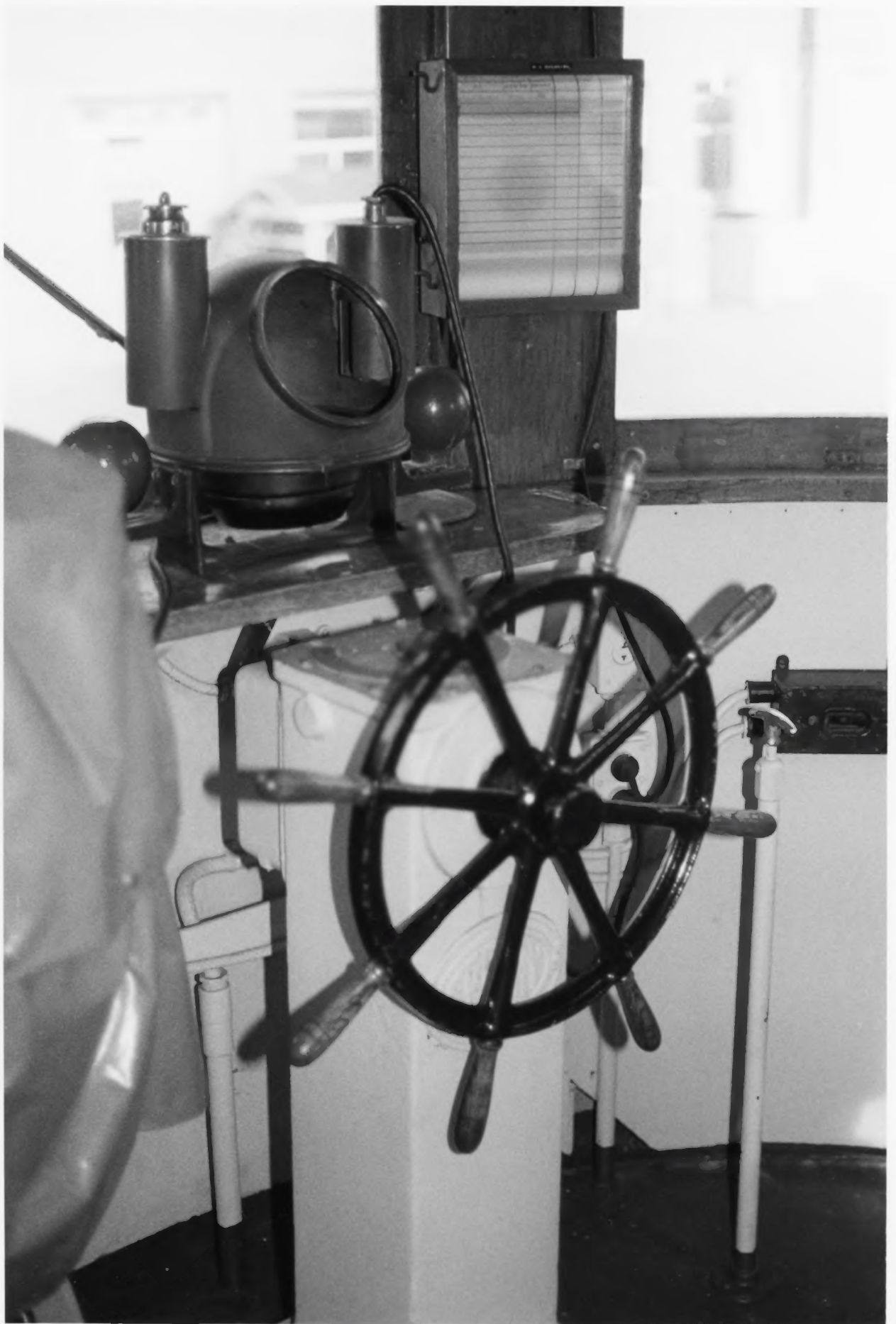
Seattle Fire Department

Typical construction of hull. Photo #4



AID UN

DUWAMISH, Seattle, Washington
Photo by James P. Delgado, 1988 (NPS)
Seattle Fire Department
Windlass on foredeck. Photo #5

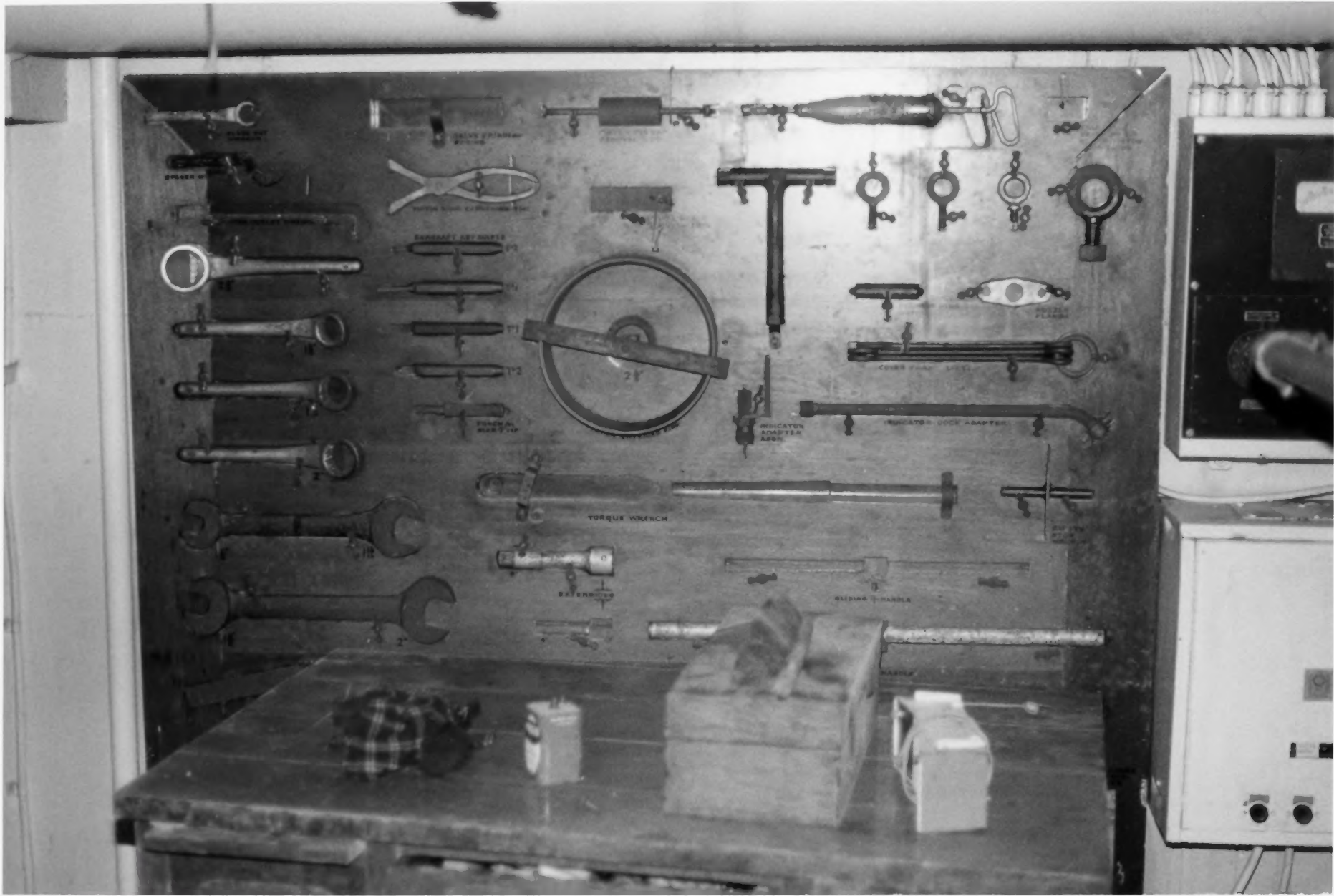


DUWAMISH, Seattle, Washington

Photo by James P. Delgado, 1988 (NPS)

Seattle Fire Department

Wheel and binnacle. Photo #6



SPROCKET
WRENCH

SAUCE PLATE
#1-1/2

WATER BOWL EXPANSION TOOL

RETRACT KEY SOCKET

24

FRONTAL
WRENCH TIP

TORQUE WRENCH

EXTENDER

SLIDING HANDLE

INDICATOR
ADAPTER
ASSEMBLY

INDICATOR DOCK ADAPTER

PIZZA
FLANKER

COVER PLATE SOCKET

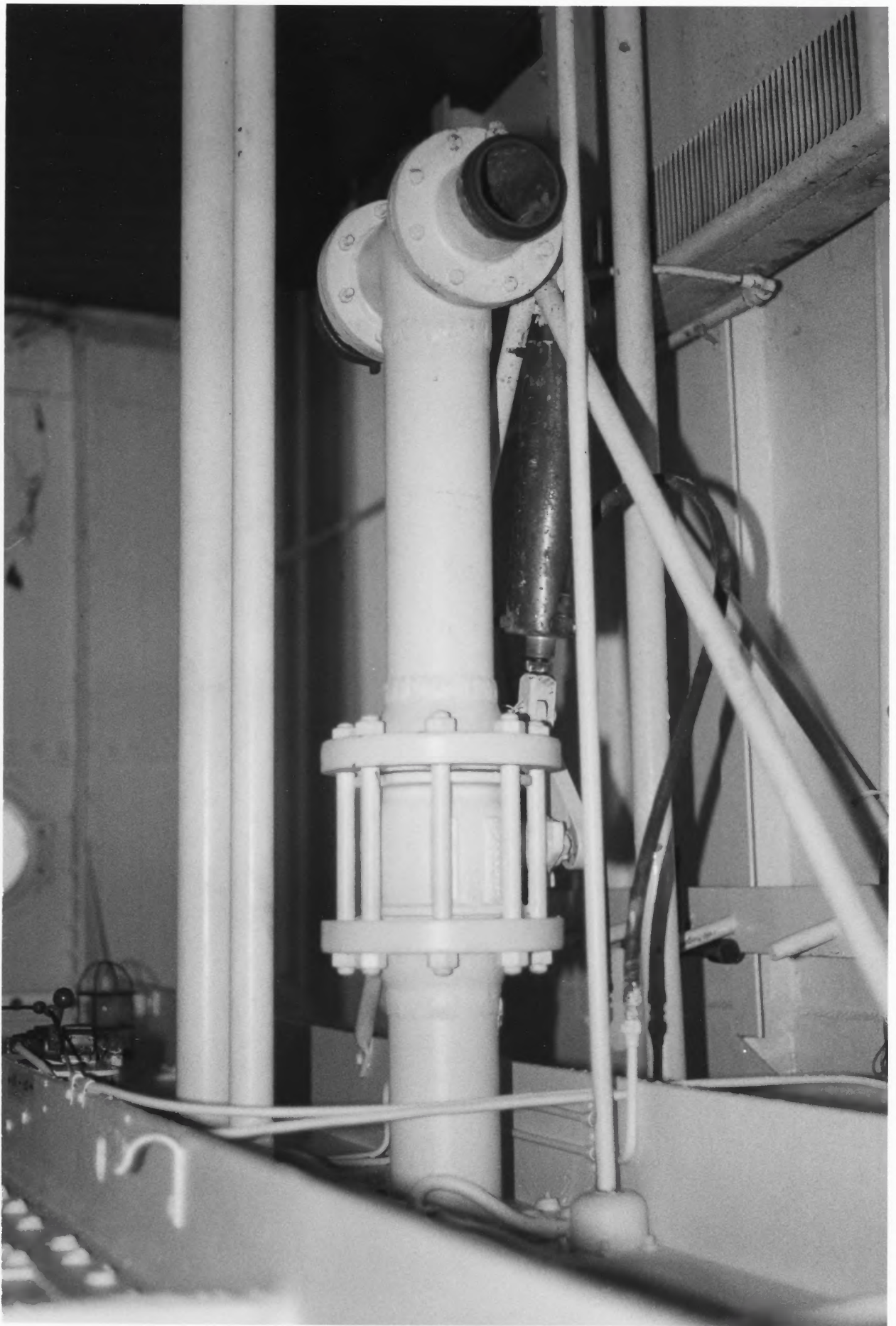


DUWAMISH, Seattle, Washington

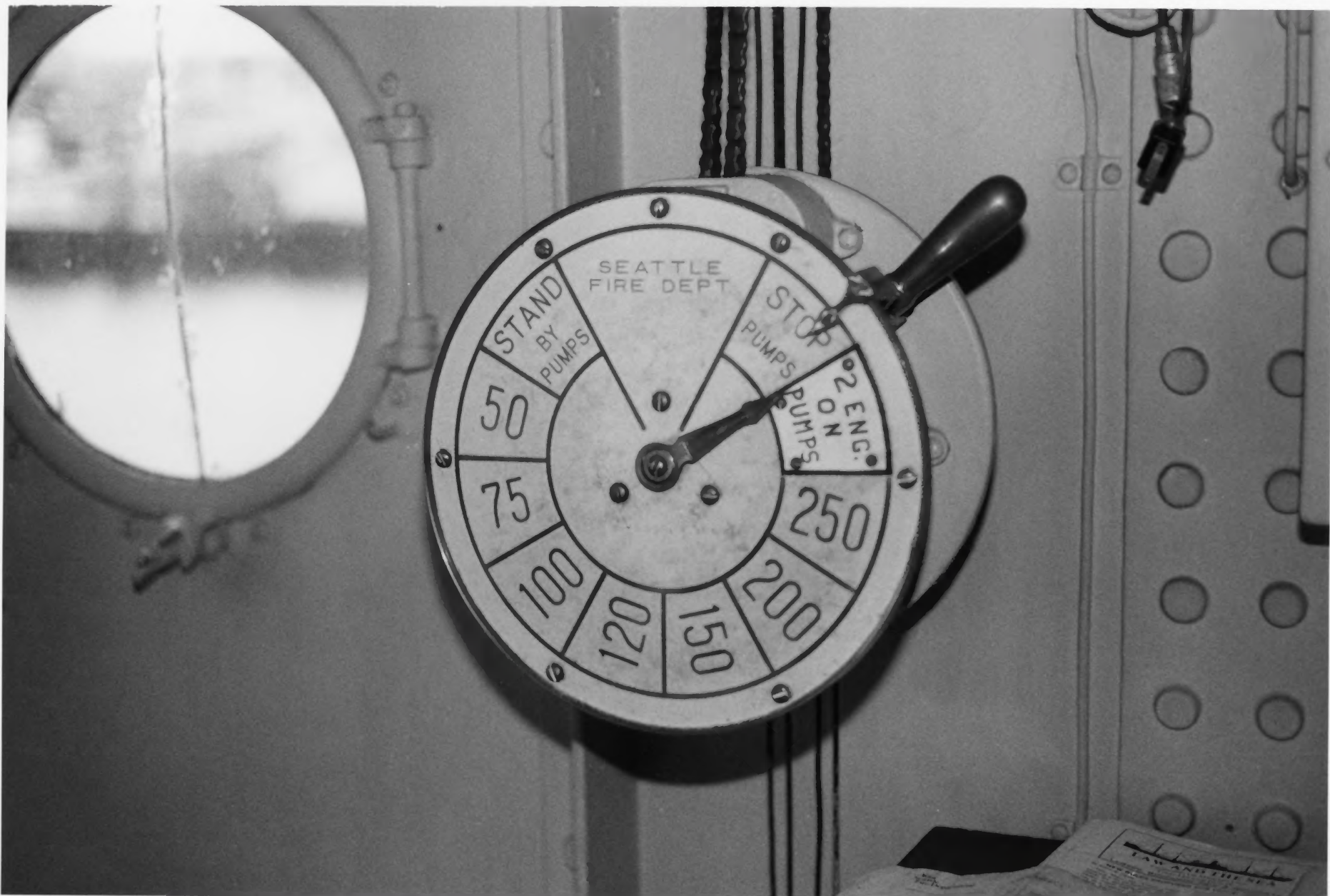
Photo by James P. Delgado, 1988 (NPS)

Seattle Fire Department

Tools in engineroom. Photo #7



DUWAMISH, Seattle, Washington
Photo by James P. Delgado, 1988 (NPS)
Seattle Fire Department
Pumphouse telegraph in wheelhouse.
Photo #8



DUWAMISH, Seattle, Washington
Photo by James P. Delgado, 1988 (NPS)
Seattle Fire Department
Special hydrant in forecandle. Photo #9



FIREBOAT NO. 1, Tacoma, Washington
Washington Historical Society Photo 1929
Tacoma Fire Department
Vessel underway.
Photo #1