



Calumet Historic District
Area bounded by Pine Street on
north, Cambria, Caledonia, and
Tamarack Streets on the east,
Columbia and E Streets on the
south; and Mine, Sixth, and
Eleventh Streets on the west

Photo No. 1

By: Ralph J. Christian, AASLH

Negative at: HSS, HCRS

Date: August 1979

View: From south, showing worker
housing and skyline of Red Jacket
(Calumet) as viewed from Sixth
Street.



Calumet Historic District
Area bounded by Pine Street on
north, Cambria, Caledonia, and
Tamarack Streets on the east,
Columbia and E Streets on the
south; and Mine, Sixth, and
Eleventh Streets on the west

Photo No. 2

By: Ralph J. Christian, AASLH

Negative at: HSS, HCRS

Date: August 1979

View: From southwest, showing
worker housing along Hecla Street.



Calumet Historic District
Area bounded by Pine Street on
north, Cambria, Caledonia, and
Tamarack Streets on the east,
Columbia and E Streets on the
south; and Mine, Sixth, and
Eleventh Streets on the west

Photo No. 3

By: Ralph J. Christian, AASLH

Negative at: HSS, HCRS

Date: August 1979

View: From northeast, showing
front (north) facades and east
ends of worker housing on Cedar
Street.



Calumet Historic District

Area bounded by Pine Street on north, Cambria, Caledonia, and Tamarack Streets on the east, Columbia and E Streets on the south; and Mine, Sixth, and Eleventh Streets on the west

Photo No. 4

By: Ralph J. Christian, AASLH

Negative at: HSS, HCRS

Date: August 1979

View: From northeast, showing worker housing on Temple and Sixth Streets.



Calumet Historic District
Area bounded by Pine Street on
north, Cambria, Caledonia, and
Tamarack Streets on the east,
Columbia and E Streets on the
south; and Mine, Sixth, and
Eleventh Streets on the west

Photo No. 5

By: Ralph J. Christian, AASLH

Negative at: HSS, HCRS

Date: August 1979

View: From northeast, showing
front (east) facade and north end
of worker house at 597-99
Waterworks Street.



Calumet Historic District
Area bounded by Pine Street on
north, Cambria, Caledonia, and
Tamarack Streets on the east,
Columbia and E Streets on the
south; and Mine, Sixth, and
Eleventh Streets on the west

Photo No. 6

By: Ralph J. Christian, AASLH

Negative at: HSS, HCRS

Date: August 1979

View: From northeast, showing
front (east) facade and north end
of residence at 305 Tamarack Street
in Laurium.



Calumet Historic District

Area bounded by Pine Street on north, Cambria, Caledonia, and Tamarack Streets on the east, Columbia and E Streets on the south; and Mine, Sixth, and Eleventh Streets on the west

Photo No. 7

By: Ralph J. Christian, AASLH

Negative at: HSS, HCRS

Date: August 1979

View: From east, showing Red Jacket (Calumet) commercial area and St. Paul the Apostle Church along Oak Street as viewed from Fifth Street.



Calumet Historic District

Area bounded by Pine Street on north, Cambria, Caledonia, and Tamarack Streets on the east, Columbia and E Streets on the south; and Mine, Sixth, and Eleventh Streets on the west

Photo No. 8

By: Ralph J. Christian, AASLH

Negative at: HSS, HCRS

Date: August 1979

View: From southwest, showing front (west) facades and south ends of Calumet Theatre and Town Hall and Shute's Bar on Sixth Street in Red Jacket (Calumet).



Calumet Historic District

Area bounded by Pine Street on north, Cambria, Caledonia, and Tamarack Streets on the east, Columbia and E Streets on the south; and Mine, Sixth, and Eleventh Streets on the west

Photo No. 9

By: Ralph J. Christian, AASLH

Negative at: HSS, HCRS

Date: August 1979

View: From south, showing commercial structures on Fifth Street near Pine Street in Red Jacket (Calumet).



Calumet Historic District
Area bounded by Pine Street on
north, Cambria, Caledonia, and
Tamarack Streets on the east,
Columbia and E Streets on the
south; and Mine, Sixth, and
Eleventh Streets on the west

Photo No. 10

By: Ralph J. Christian, AASLH

Negative at: HSS, HCRS

Date: August 1979

View: From northeast, showing
front (east) facades and north
ends of commercial buildings on
Hecla Street in Laurium.



(3)

View no. on 5th St., west side ~~Putland to Oak~~ Putland to Oak & beyond



(4)

Dad Bank - 230 5th St., Colman



3

Calumet & Cherokee - view No. From Kenney St.



(5)

6th St. - West side between 6th & 7th



Portland St. - Ste. Maria Church & Yellow Jacket house



Alfred Fisher, 6th St. No. 24, 22



Subdivided housing, Agassiz Park, Calumet



View north of Decla location buildings, C&H Mines



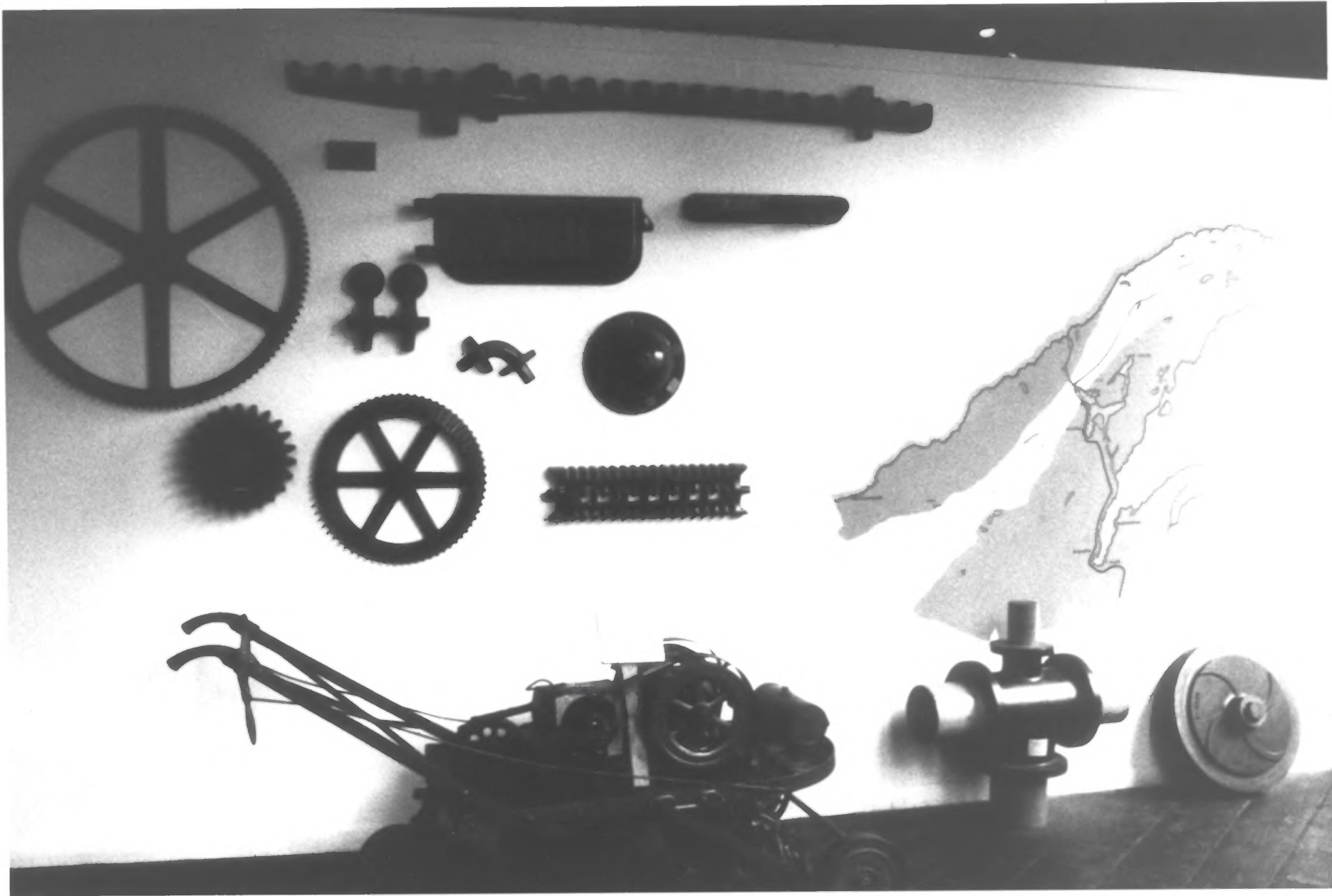
View from St. Anne's tower NW toward St. Paul's. Shows 6th between Court & Parkland.



Winnipeg, Manitoba, Canada
P.O. Box 1000



21st June, 1942



Intensivus, *Agustina* *Muller*



(2) West side of 5th St., Columbus, looking south ~~from~~ between Elm & Oak



(3)

View so. on 5th St., west side, betw. Portland & Scott



View So. on 5th, east side betw. Postlens & Scott



5 MINUTES BAR

SCHRAM

(7)

6th St., east side, view. So. between Calumet Theater (Elm) & Oak





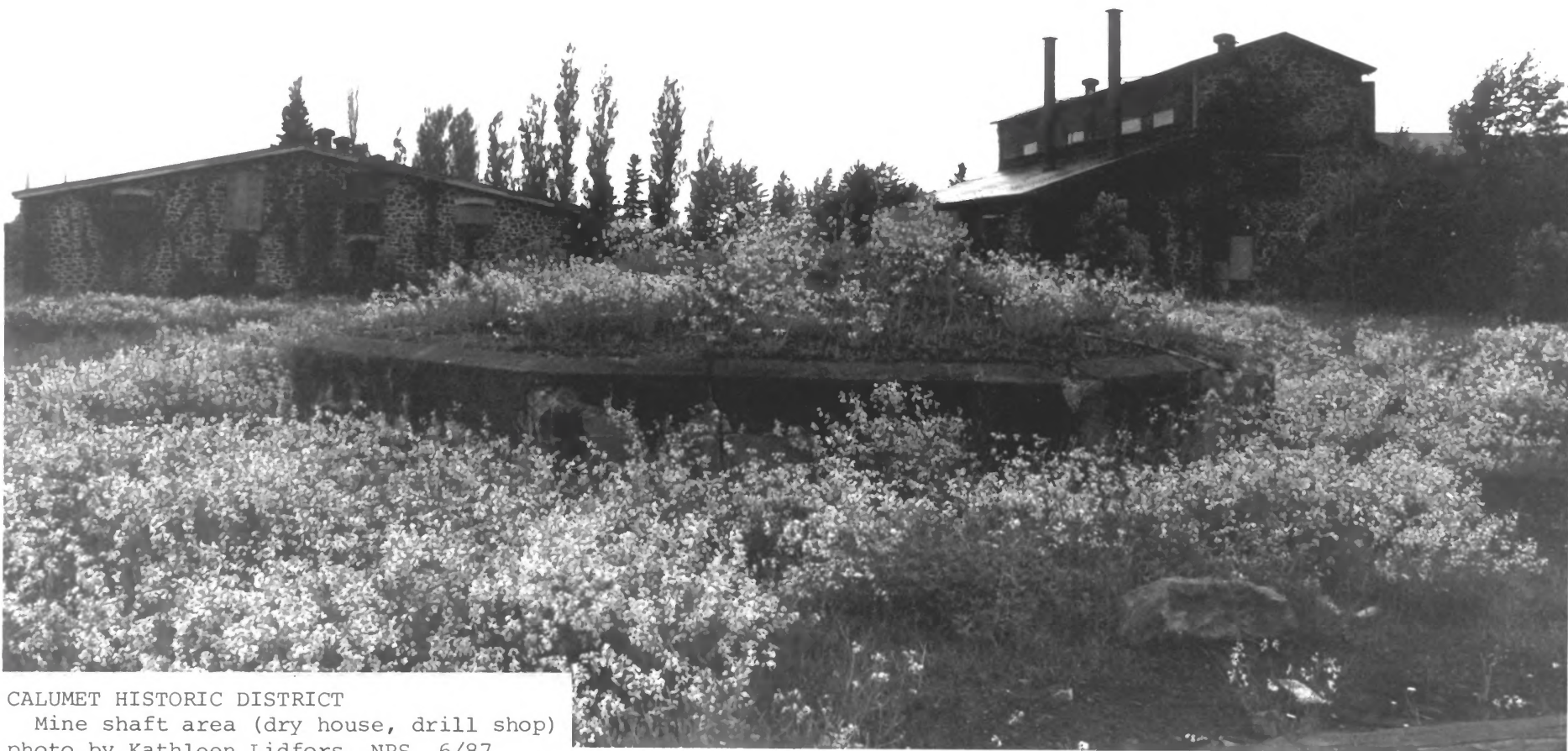


2



CALUMET HISTORIC DISTRICT
Company library & general offices
photo by Kathleen Lidfors, NPS 6/87





CALUMET HISTORIC DISTRICT

Mine shaft area (dry house, drill shop)
photo by Kathleen Lidfors, NPS 6/87



Coppertown-USA
museum visitor center





CALUMET HISTORIC DISTRICT
Fifth Street & Red Jacket Road
photo by Kathleen Lidfors, NPS, 6/87



COPPER
WORLD
COPPER GIFTS

Dee's
ANTIQUES

Dee's
ANTIQUES

CHEVROLET
OLDSMOBILE
Cadillac
PUB







KILPELA'S
ZANI

FREE
PARKING

KILPELA'S
5PC BEDROOM SET \$679
PINE BUNKBED \$329

Holmes JEWELERS

M. J. MEIER
OPTOMETRIST









CALUMET HISTORIC DISTRICT
Agassiz Park
photo by Kathleen Lidfors, NPS 6/87



CALUMET HISTORIC DISTRICT

SW corner of Sixth and Oak Streets

photo by Kathleen Lidfors, NPS 6/87



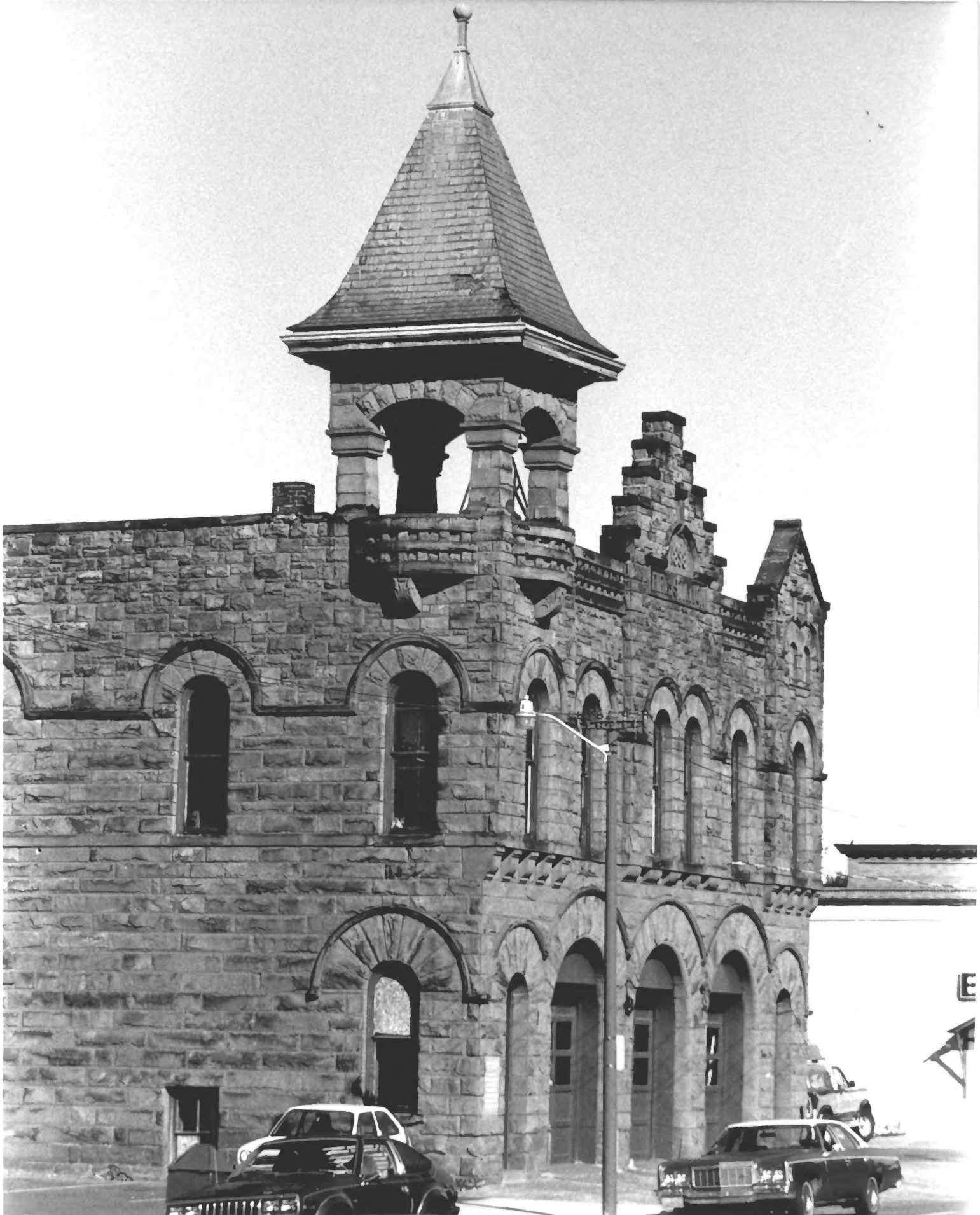
CALUMET HISTORIC DISTRICT

Calumet Village Office, Calumet Theater
photo by Kathleen Lidfors, NPS 6/87





SHUTE'S
1890
BAR









- 4. High School House
- 5. Post Office
- 6. Mines Hospital
- 7. St. Patrick's Hall
- 8. Congregational Church
- 9. Roman Catholic Church
- 10. German Church
- 11. Methodist Ep. Ch.

- 1. Calumet Engine House
- 2. do. do.
- 3. do. Pump do.
- 4. do. Water do.
- 5. do. Engine do.
- 6. do. Iron House
- 7. do. Blacksmith Shop
- 8. do. Dry House
- 9. do. do.
- 10. Calumet & Hecla Water Works
- 11. Pop & Road Beer Fare, Jan. Phillips, Prop.
- 12. do. do. do.

CALUMET HECLA & RED JACKET MICH.

1881.

Population 7500

- 13. Hecla Engine House
- 14. do. Store do.
- 15. do. Hotel do.
- 16. do. Ware do.
- 17. do. Dry do.
- 18. do. Blacksmith Shop
- 19. do. Carpenter do.
- 20. do. Marble do.
- 21. Fire Engine House
- 22. Mineral Range S. S. Depot
- 23. Lumber Yard, Theo. R. Lyon, Prop.

- 24. Sturgeon & Friends Lutheran Church
- 25. Roman Catholic Church
- 26. Public House, F. W. Gooding, Prop.
- 27. Anglo-American Union, T. Carlson, Prop.
- 28. Store do.
- 29. Unnumbered do.
- 30. Calumet Hotel
- 31. Bear Hill Inn

PRINTED BY THE
 JUN 2 - 1881



TAMARACK

RED JACKET

FROM CALUMET
M STATION PHOTO BY ISL...

MORRIS HIGHT





Roeder
Stratton Mills





