



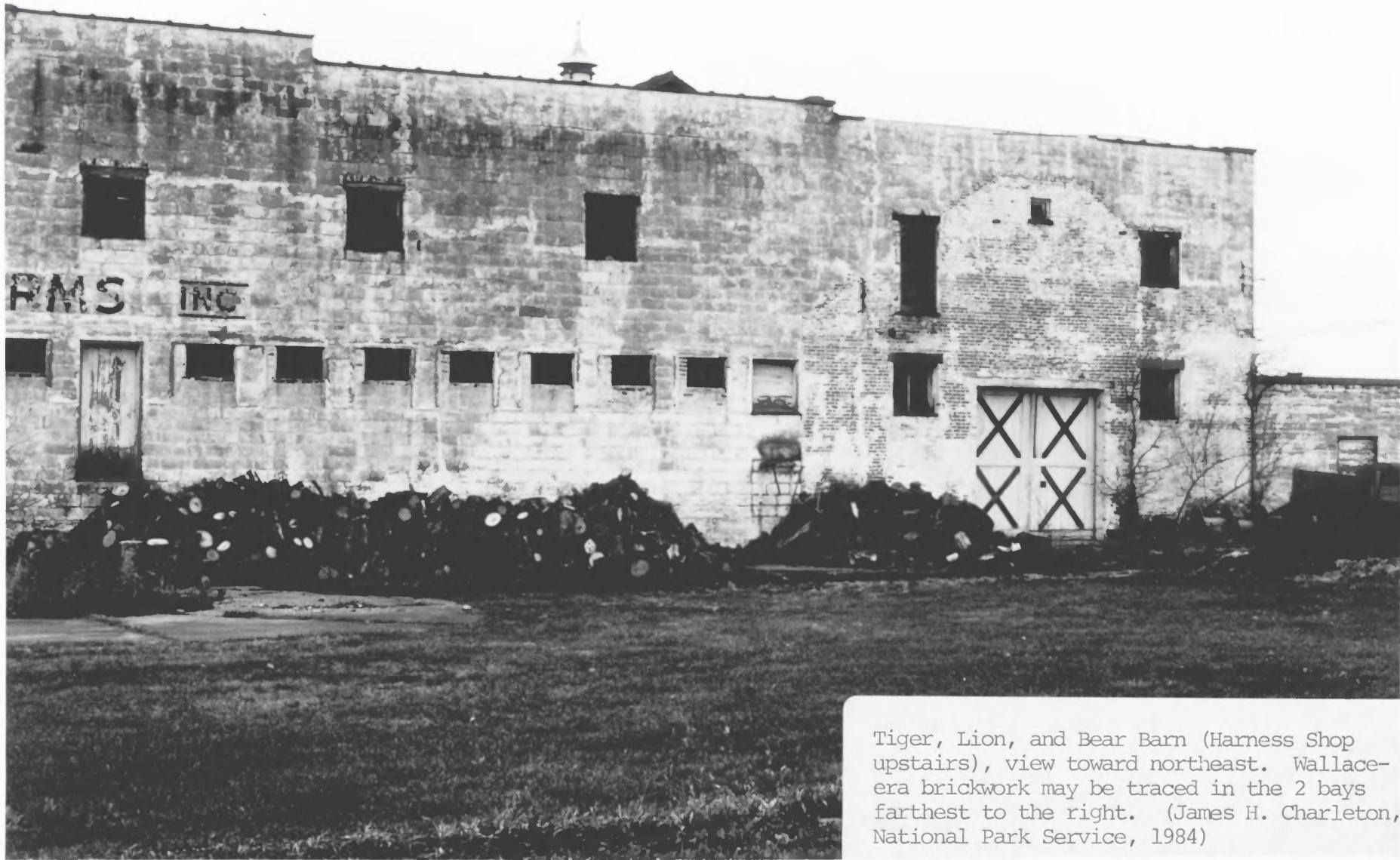
Massive carved stone gateposts from the circus era at the driveway entrance of the Godfroy House, Wallace Circus Winter Quarters. (James H. Charleton, National Park Service, 1984)



View northwest toward the Elephant, Hippo, and Cat Barn, left, and Wagon Shop, right, Wallace Circus Winter Quarters. (James H. Charleton, National Park Service, 1984)



Southeast (side) elevation of Elephant, Hippo, and Cat Barn (left) and its north-east (entrance) elevation (right).  
(James H. Charleton, National Park Service, 1984)



Tiger, Lion, and Bear Barn (Harness Shop upstairs), view toward northeast. Wallacera brickwork may be traced in the 2 bays farthest to the right. (James H. Charleton, National Park Service, 1984)