



Figure 3
Quarry Visitor Center
Uintah County, Utah
Exterior, 1958

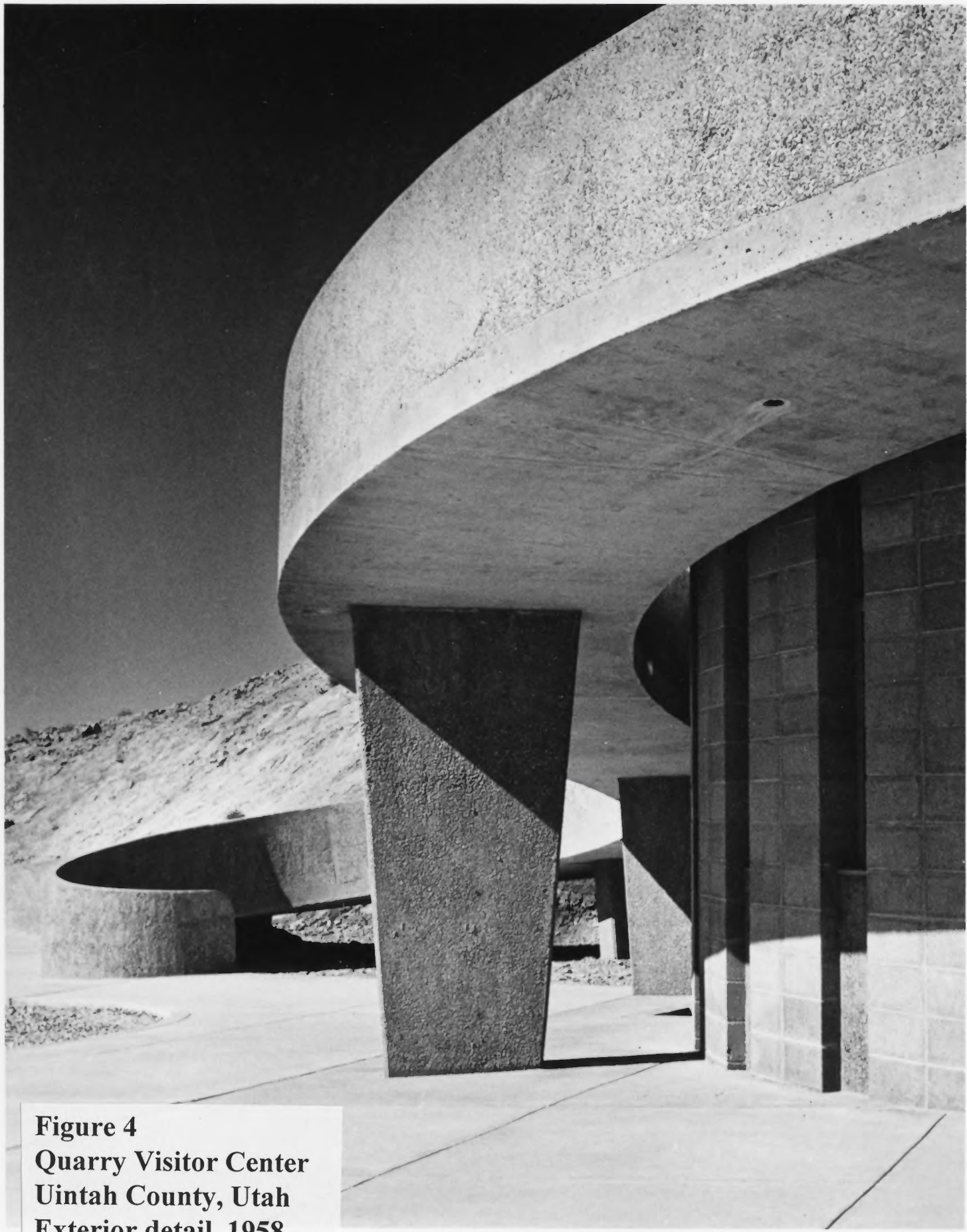


Figure 4
Quarry Visitor Center
Uintah County, Utah
Exterior detail, 1958



Figure 5
Quarry Visitor Center
Uintah County, Utah
Interior detail, 1958

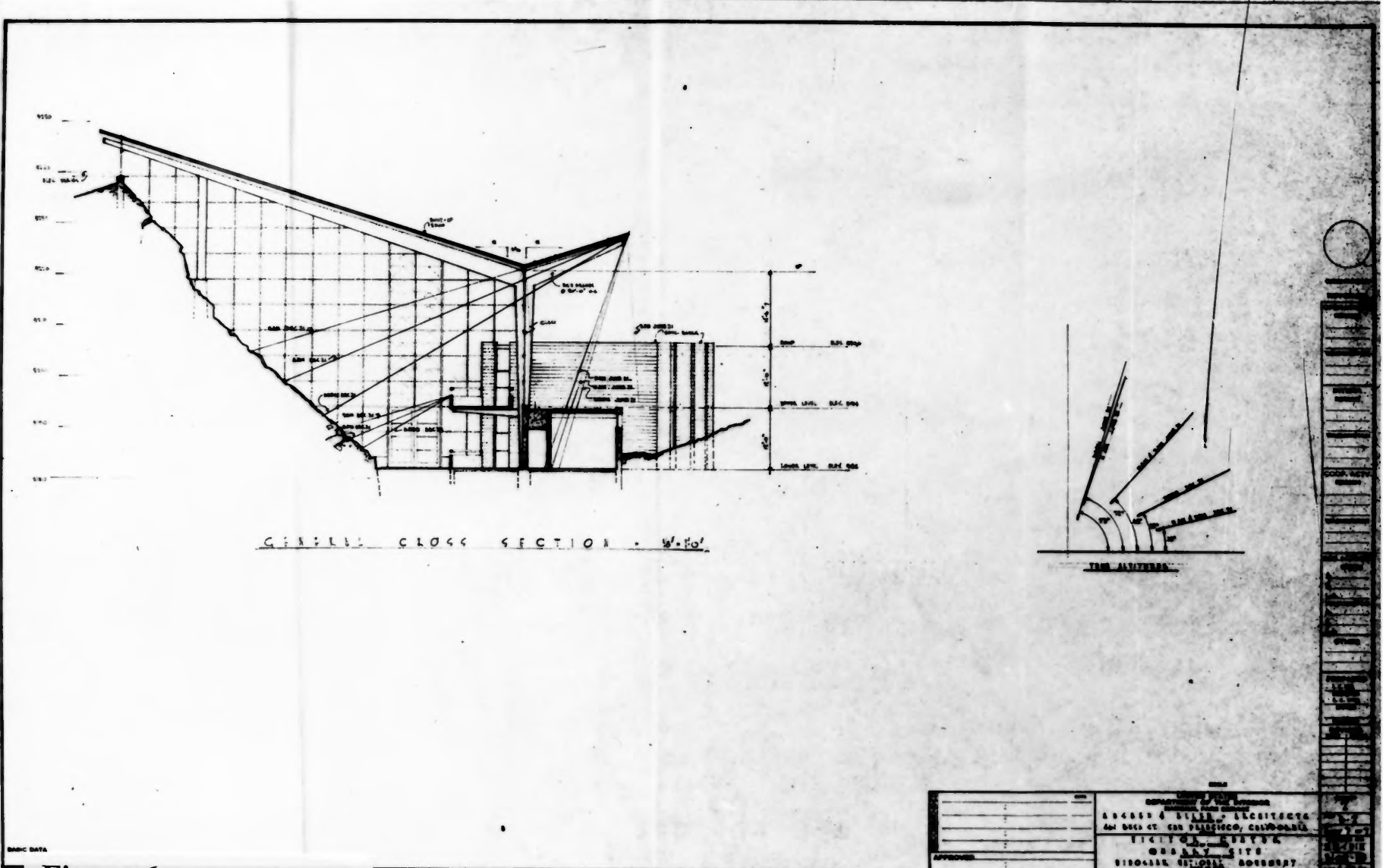


Figure 6
Quarry Visitor Center
Uintah County, Utah
General Cross Section

REVISIONS		DATE	BY
NO.	DESCRIPTION		

DEPARTMENT OF THE INTERIOR BUREAU OF LAND MANAGEMENT 4040 SOUTH 400 WEST, SUITE 200 SALT LAKE CITY, UTAH 84143	
PROJECT NO. 98-0100	SHEET NO. 10
DRAWN BY: [Name]	CHECKED BY: [Name]
APPROVED BY: [Name]	DATE: [Date]



Figure 7
Quarry Visitor Center
Uintah County, Utah
Exterior, 1999



Figure 8
Quarry Visitor Center
Uintah County, Utah
Exterior detail, 1999



Figure 9
Quarry Visitor Center
Uintah County, Utah
Interior detail, 1999