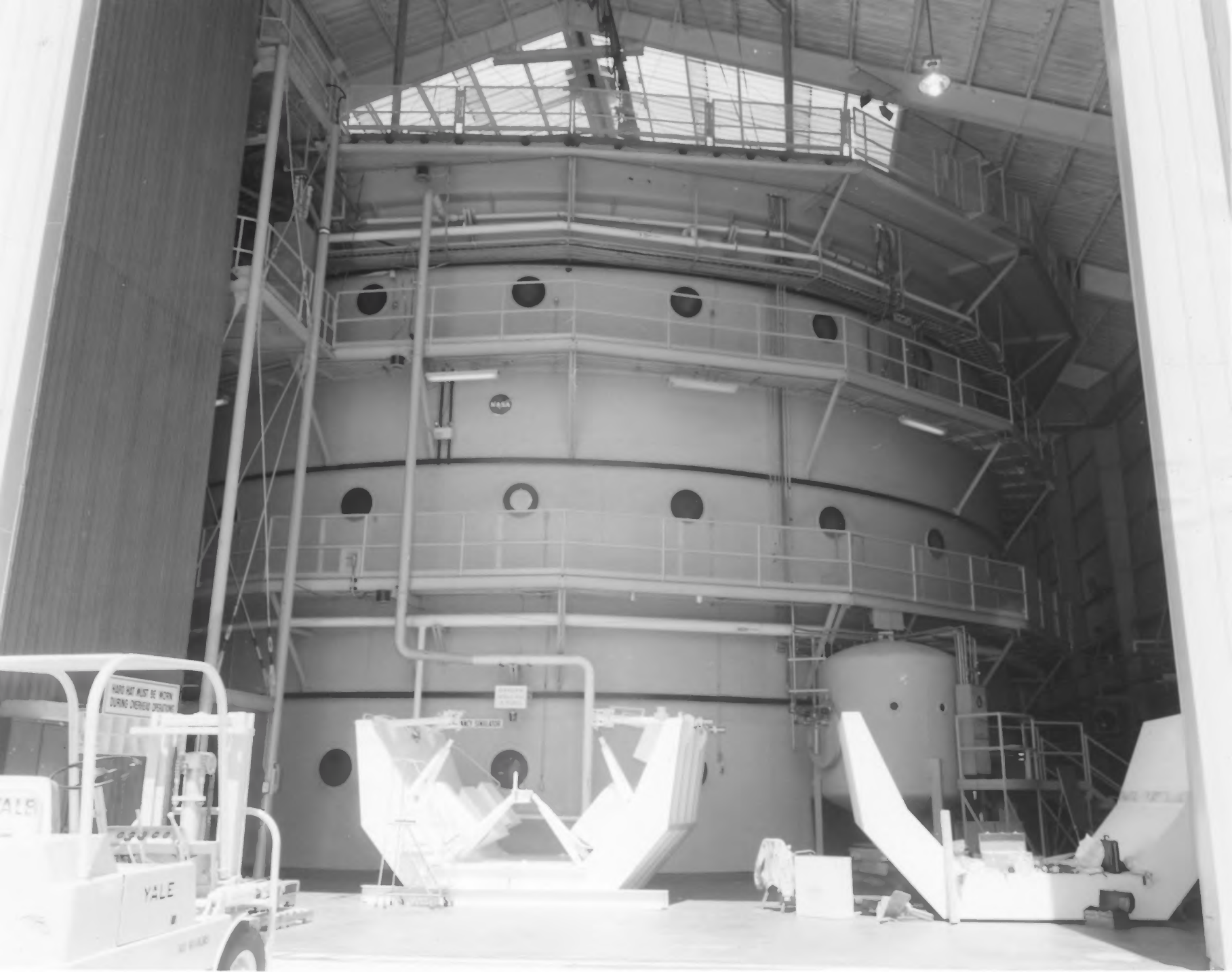




CENTRAL SUPPLY COMPANY

1. Neutral Buoyancy Space Simulator
2. Huntsville, Alabama
3. NASA
4. 1984
5. NASA, Marshall Space Flight Center Facilities Office
6. Exterior View of Neutral Buoyancy Space Simulator
7. 55



HARD HAT MUST BE WORN
DURING OPERATIONS

YALE

NASA

SAFETY ORIFICE

1. Neutral Buoyancy Space Simulator
2. Huntsville, Alabama
3. NASA
4. 1984
5. NASA, Marshall Space Flight Center Facilities
Office
6. Exterior View of Water Tank
7. 57



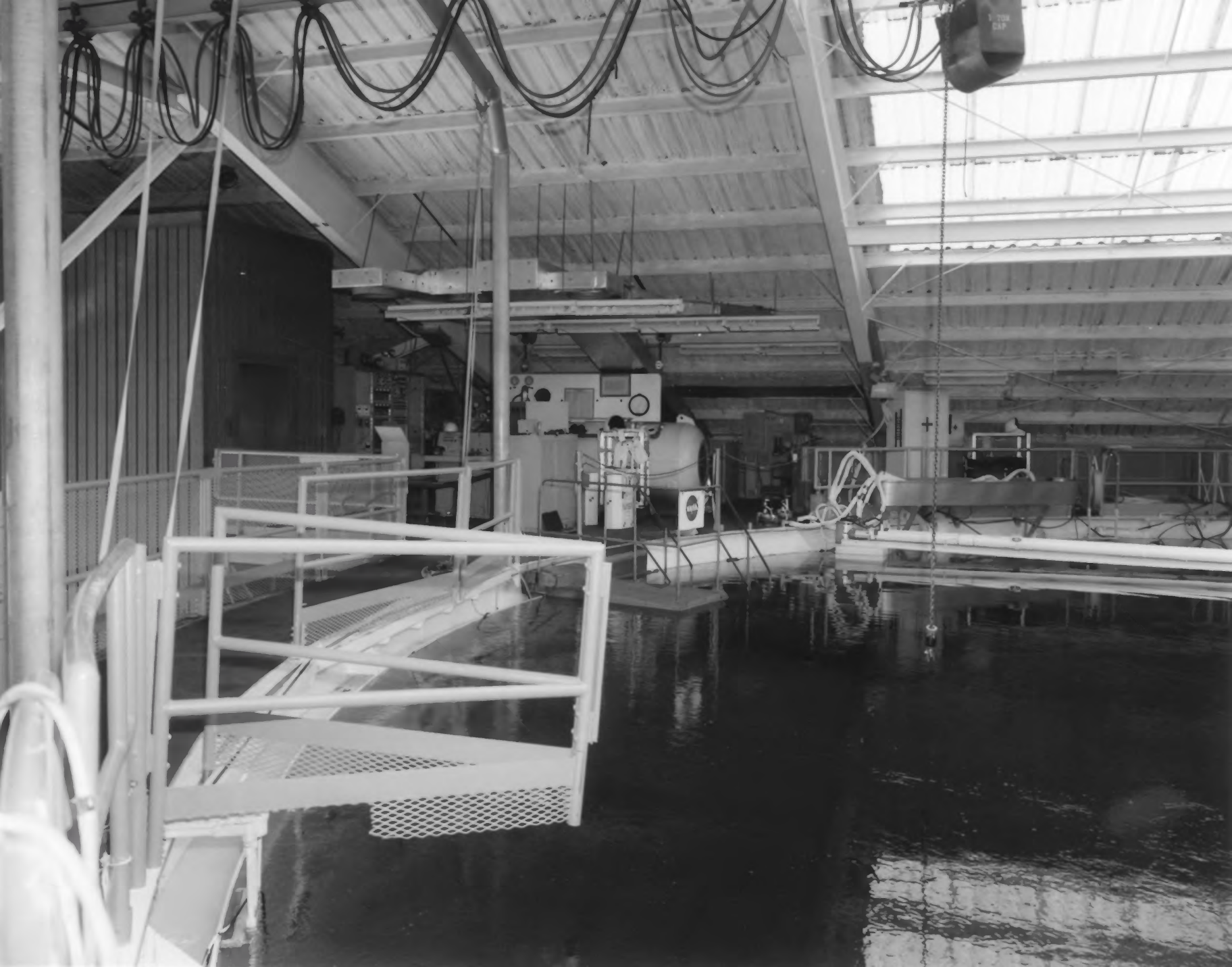
BILL CAPTION							
NEGATIVE NO.	CLASS	TYPE	LAB/OFF	MO/YR	FILM		NO.
442262	U	BZ	AR	4/84			
NEUTRAL BUOYANCY TANK							
PHOTOGRAPHER:				DATE:			
CORDER				JMC			
				4/6/84			
MSFC - Form 1263 (Rev. August 1976)				• HALLET CODE "A"			

BLDG 4705 VIEW FROM TOP OF NEUTRAL BUOYANCY
SIMULATOR.

NASA-MSFC



1. Neutral Buoyancy Space Simulator
2. Huntsville, Alabama
3. NASA
4. 1984
5. NASA, Marshall Space Flight Center Facilities Office
6. Top of Water Tank
7. 58



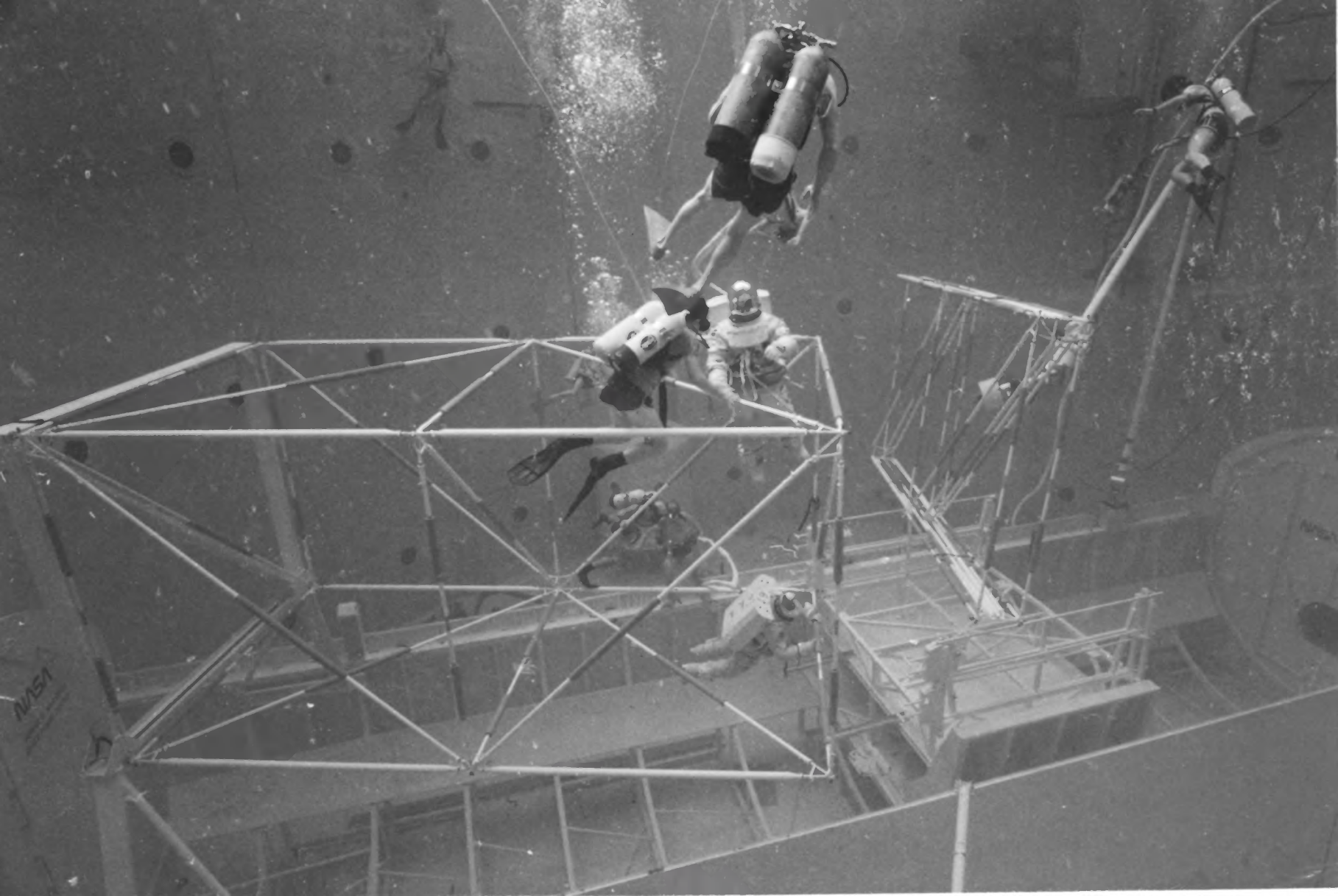
STILL CAPTION									
NEGATIVE NO.	CLASS	Y _o	S _z	LAD/ OFF	MO/YR				
442264	U	B	Z	AB	4/84				
		NEUTRAL BUOYANCY TANK							
PHOTOGRAPHER: CORDER				JMC		DATE: 4/6/84			
MSFC - Form 1002 (Rev. August 1979)						• MILITARY CODE "A"			

BLOG 4705 VIEW OF TOP LEVEL OF NEUTRAL BUOYANCY SIMULATOR SHOWING SOME OF THE EQUIPMENT AND DECOMPRESSION CHAMBER.

NASA-MSFC



1. Neutral Buoyancy Space Simulator
2. Huntsville, Alabama
3. NASA
4. 1984
5. NASA, Marshall Space Flight Center Facilities Office
6. Interior View of Control Room
7. 59



1. Neutral Buoyancy Space Simulator
2. Huntsville, Alabama
3. NASA
4. 1980
5. NASA, Marshall Space Flight Center Facilities Office
6. Interior View of Water Tank with astronaut and support personnel
7. 60