



UNITED STATES DEPARTMENT OF THE INTERIOR
NATIONAL PARK SERVICE

NATIONAL REGISTER OF HISTORIC PLACES
PROPERTY PHOTOGRAPH FORM

FOR NPS USE ONLY

RECEIVED

DATE ENTERED

SEE INSTRUCTIONS IN *HOW TO COMPLETE NATIONAL REGISTER FORMS*
TYPE ALL ENTRIES -- ENCLOSE WITH PHOTOGRAPH.

1 NAME

HISTORIC Kalaupapa Leprosy Settlement

AND/OR COMMON

Kalawao Settlement, Kalaupapa Peninsula

2 LOCATION

CITY, TOWN Kalaupapa Peninsula VICINITY OF Moloka'i COUNTY Kalawao and STATE Hawaii
Island Maui

3 PHOTO REFERENCE

PHOTO CREDIT NPS (Apple)

DATE OF PHOTO 8/6/75

NEGATIVE FILED AT HI State Office, NPS, 677 Ala Moana Blvd., Suite 512, Honolulu, HI 96813

4 IDENTIFICATION

DESCRIBE VIEW, DIRECTION, ETC. IF DISTRICT, GIVE BUILDING NAME & STREET

PHOTO NO. Roll V-6

View south, from near lighthouse, of Makanalua ahupua'a.
Waihanau valley in background.

KALAUPAPA NO. 1



UNITED STATES DEPARTMENT OF THE INTERIOR
NATIONAL PARK SERVICE

NATIONAL REGISTER OF HISTORIC PLACES
PROPERTY PHOTOGRAPH FORM

FOR NPS USE ONLY

RECEIVED

DATE ENTERED

SEE INSTRUCTIONS IN *HOW TO COMPLETE NATIONAL REGISTER FORMS*
TYPE ALL ENTRIES -- ENCLOSE WITH PHOTOGRAPH.

1 NAME

HISTORIC Kalaupapa Leprosy Settlement

AND/OR COMMON

Kalawao Settlement, Kalaupapa Peninsula

2 LOCATION

CITY, TOWN Kalaupapa Peninsula VICINITY OF Moloka'i COUNTY Kalawao and STATE Hawaii
Island Maui

3 PHOTO REFERENCE

PHOTO CREDIT NPS (Apple)

DATE OF PHOTO 8/6/75

NEGATIVE FILED AT HI State Office, NPS, 677 Ala Moana Blvd., Suite 512, Honolulu, HI 96813

4 IDENTIFICATION

DESCRIBE VIEW, DIRECTION, ETC. IF DISTRICT, GIVE BUILDING NAME & STREET

View from lighthouse, Kalaupapa Settlement in high center;
field systems in low center. Looking southwest.

PHOTO NO. Roll I-
22A

KALAUAPAPA NO. 2



UNITED STATES DEPARTMENT OF THE INTERIOR
NATIONAL PARK SERVICE

NATIONAL REGISTER OF HISTORIC PLACES
PROPERTY PHOTOGRAPH FORM

FOR NPS USE ONLY

RECEIVED

DATE ENTERED

SEE INSTRUCTIONS IN *HOW TO COMPLETE NATIONAL REGISTER FORMS*
TYPE ALL ENTRIES -- ENCLOSE WITH PHOTOGRAPH

1 NAME

HISTORIC Kalaupapa Leprosy Settlement

AND/OR COMMON

Kalawao Settlement, Kalaupapa Peninsula

2 LOCATION

CITY, TOWN Kalaupapa Peninsula VICINITY OF Moloka'i Island COUNTY Kalawao and Maui STATE Hawaii

3 PHOTO REFERENCE

PHOTO CREDIT NPS (Apple)

DATE OF PHOTO 8/6/75

NEGATIVE FILED AT HI State Office, NPS, 677 Ala Moana Blvd., Suite 512, Honolulu, HI 96813

4 IDENTIFICATION

DESCRIBE VIEW, DIRECTION, ETC. IF DISTRICT, GIVE BUILDING NAME & STREET

View from lighthouse toward southeast.

PHOTO NO. Roll I-
25A



UNITED STATES DEPARTMENT OF THE INTERIOR
NATIONAL PARK SERVICE

NATIONAL REGISTER OF HISTORIC PLACES
PROPERTY PHOTOGRAPH FORM

FOR NPS USE ONLY

RECEIVED

DATE ENTERED

SEE INSTRUCTIONS IN *HOW TO COMPLETE NATIONAL REGISTER FORMS*
TYPE ALL ENTRIES -- ENCLOSE WITH PHOTOGRAPH

1 NAME

HISTORIC Kalaupapa Leprosy Settlement

AND/OR COMMON

Kalawao Settlement, Kalaupapa Peninsula

2 LOCATION

CITY, TOWN Kalaupapa Peninsula — VICINITY OF Moloka'i COUNTY Kalawao and STATE Hawaii
Island Maui

3 PHOTO REFERENCE

PHOTO CREDIT NPS (Apple)

DATE OF PHOTO 8/6/75

NEGATIVE FILED AT HI State Office, NPS, 677 Ala Moana Blvd., Suite 512, Honolulu, HI 96813

4 IDENTIFICATION

DESCRIBE VIEW, DIRECTION, ETC. IF DISTRICT, GIVE BUILDING NAME & STREET

PHOTO NO. Roll I-
9A

Mule train arriving at Puwahi, in Kalaupapa ahupua'a.

KALAUAPAPA NO. 4



USCG LIGHT STATION
1909
TOWERS 106 - STEPS 189
2,000,000 CANDLEPOWER
BRIGHTEST BEAM
IN THE PACIFIC

OPERATIONAL
AREA
AUTHORIZED
VEHICLES ONLY

USCG PERSONNEL
N70

UNITED STATES DEPARTMENT OF THE INTERIOR
NATIONAL PARK SERVICE

NATIONAL REGISTER OF HISTORIC PLACES
PROPERTY PHOTOGRAPH FORM

FOR NPS USE ONLY

RECEIVED

DATE ENTERED

SEE INSTRUCTIONS IN *HOW TO COMPLETE NATIONAL REGISTER FORMS*
TYPE ALL ENTRIES -- ENCLOSE WITH PHOTOGRAPH.

1 NAME

HISTORIC Kalaupapa Leprosy Settlement

AND/OR COMMON

Kalawao Settlement, Kalaupapa Peninsula

2 LOCATION

CITY, TOWN Kalaupapa Peninsula VICINITY OF Moloka'i COUNTY Kalawao and STATE Hawaii
Island Maui

3 PHOTO REFERENCE

PHOTO CREDIT NPS. (Apple)

DATE OF PHOTO 8/6/75

NEGATIVE FILED AT HI State Office, NPS, 677 Ala Moana Blvd., Suite 512, Honolulu, HI 96813

4 IDENTIFICATION

DESCRIBE VIEW, DIRECTION, ETC. IF DISTRICT, GIVE BUILDING NAME & STREET

Airport, Kalaupapa.

PHOTO NO. Roll I-
6A



UNITED STATES DEPARTMENT OF THE INTERIOR
NATIONAL PARK SERVICE

NATIONAL REGISTER OF HISTORIC PLACES
PROPERTY PHOTOGRAPH FORM

FOR NPS USE ONLY

RECEIVED

DATE ENTERED

SEE INSTRUCTIONS IN *HOW TO COMPLETE NATIONAL REGISTER FORMS*
TYPE ALL ENTRIES -- ENCLOSE WITH PHOTOGRAPH.

1 NAME

HISTORIC Kalaupapa Leprosy Settlement

AND/OR COMMON

Kalawao Settlement, Kalaupapa Peninsula

2 LOCATION

CITY, TOWN Kalaupapa Peninsula VICINITY OF Moloka'i COUNTY Kalawao and STATE Hawaii
Island Maui

3 PHOTO REFERENCE

PHOTO CREDIT NPS (Apple)

DATE OF PHOTO 8/6/75

NEGATIVE FILED AT HI State Office, NPS, 677 Ala Moana Blvd., Suite 512, Honolulu, HI 96813

4 IDENTIFICATION

DESCRIBE VIEW, DIRECTION, ETC. IF DISTRICT. GIVE BUILDING NAME & STREET

Barge landing, Kalaupapa Settlement. Looking south.

PHOTO NO. Roll IV-
4A

KALAUPAPA NO. 6



UNITED STATES DEPARTMENT OF THE INTERIOR
NATIONAL PARK SERVICE

NATIONAL REGISTER OF HISTORIC PLACES
PROPERTY PHOTOGRAPH FORM

FOR NPS USE ONLY

RECEIVED

DATE ENTERED

SEE INSTRUCTIONS IN *HOW TO COMPLETE NATIONAL REGISTER FORMS*
TYPE ALL ENTRIES --ENCLOSE WITH PHOTOGRAPH.

1 NAME

HISTORIC Kalaupapa Leprosy Settlement

AND/OR COMMON

Kalawao Settlement, Kalaupapa Peninsula

2 LOCATION

CITY, TOWN Kalaupapa Peninsula VICINITY OF Moloka'i COUNTY Kalawao and STATE Hawaii
Island Maui

3 PHOTO REFERENCE

PHOTO CREDIT NPS (Apple)

DATE OF PHOTO 8/6/75

NEGATIVE FILED AT HI State Office, NPS, 677 Ala Moana Blvd., Suite 512, Honolulu, HI 96813

4 IDENTIFICATION

DESCRIBE VIEW, DIRECTION, ETC. IF DISTRICT, GIVE BUILDING NAME & STREET

PHOTO NO. Roll V-
23

Lighter landing, Kalawao. Believed built 1909 for
U. S. Leprosy Investigation Station. Looking west.

KALAUAPAPA NO. 7



UNITED STATES DEPARTMENT OF THE INTERIOR
NATIONAL PARK SERVICE

NATIONAL REGISTER OF HISTORIC PLACES
PROPERTY PHOTOGRAPH FORM

FOR NPS USE ONLY

RECEIVED

DATE ENTERED

SEE INSTRUCTIONS IN *HOW TO COMPLETE NATIONAL REGISTER FORMS*
TYPE ALL ENTRIES -- ENCLOSE WITH PHOTOGRAPH

1 NAME

HISTORIC Kalaupapa Leprosy Settlement

AND/OR COMMON

Kalawao Settlement, Kalaupapa Peninsula

2 LOCATION

CITY, TOWN Kalaupapa Peninsula VICINITY OF Moloka'i COUNTY Kalawao and STATE Hawaii
Island Maui

3 PHOTO REFERENCE

PHOTO CREDIT NPS (Apple)

DATE OF PHOTO 8/6/75

NEGATIVE FILED AT HI State Office, NPS, 677 Ala Moana Blvd., Suite 512, Honolulu, HI 96813

4 IDENTIFICATION

DESCRIBE VIEW, DIRECTION, ETC. IF DISTRICT, GIVE BUILDING NAME & STREET

Ananaluwahine Cave. A collapsed lava tube used as a dwelling.
The lower end opens on the sea cliffs. Bishop Museum site #290.

PHOTO NO. Roll V-
17A

KALAUAPAPA NO. 8



UNITED STATES DEPARTMENT OF THE INTERIOR
NATIONAL PARK SERVICE

NATIONAL REGISTER OF HISTORIC PLACES
PROPERTY PHOTOGRAPH FORM

FOR NPS USE ONLY

RECEIVED

DATE ENTERED

SEE INSTRUCTIONS IN *HOW TO COMPLETE NATIONAL REGISTER FORMS*
TYPE ALL ENTRIES -- ENCLOSE WITH PHOTOGRAPH

1 NAME

HISTORIC Kalaupapa Leprosy Settlement

AND/OR COMMON

Kalawao Settlement, Kalaupapa Peninsula

2 LOCATION

CITY, TOWN Kalaupapa Peninsula VICINITY OF Moloka'i COUNTY Kalawao and STATE Hawaii
Island Maui

3 PHOTO REFERENCE

PHOTO CREDIT NPS (Apple)

DATE OF PHOTO 8/6/75

NEGATIVE FILED AT HI State Office, NPS, 677 Ala Moana Blvd., Suite 512, Honolulu, HI 96813

4 IDENTIFICATION

DESCRIBE VIEW, DIRECTION, ETC. IF DISTRICT, GIVE BUILDING NAME & STREET

Kauhako crater with lake, in Makanalua ahupau'a.

PHOTO NO. Roll II-
32A



SITE OF
FIRST SETTLEMENT
EST. - 1865
KALAWAO, MOLOKAI, HI



UNITED STATES DEPARTMENT OF THE INTERIOR
NATIONAL PARK SERVICE

NATIONAL REGISTER OF HISTORIC PLACES
PROPERTY PHOTOGRAPH FORM

FOR NPS USE ONLY

RECEIVED

DATE ENTERED

SEE INSTRUCTIONS IN *HOW TO COMPLETE NATIONAL REGISTER FORMS*
TYPE ALL ENTRIES -- ENCLOSE WITH PHOTOGRAPH.

1 NAME

HISTORIC Kalaupapa Leprosy Settlement

AND/OR COMMON

Kalawao Settlement, Kalaupapa Peninsula

2 LOCATION

CITY, TOWN Kalaupapa Peninsula VICINITY OF Moloka'i COUNTY Kalawao and STATE Hawaii
Island Maui

3 PHOTO REFERENCE

PHOTO CREDIT NPS (Apple)

DATE OF PHOTO 8/6/75

NEGATIVE FILED AT HI State Office, NPS, 677 Ala Moana Blvd., Suite 512, Honolulu, HI 96813

4 IDENTIFICATION

DESCRIBE VIEW, DIRECTION, ETC. IF DISTRICT, GIVE BUILDING NAME & STREET

PHOTO NO. Roll V-29

Islands offshore of Waikolu valley. Looking west.



UNITED STATES DEPARTMENT OF THE INTERIOR
NATIONAL PARK SERVICE

NATIONAL REGISTER OF HISTORIC PLACES
PROPERTY PHOTOGRAPH FORM

FOR NPS USE ONLY

RECEIVED

DATE ENTERED

SEE INSTRUCTIONS IN *HOW TO COMPLETE NATIONAL REGISTER FORMS*
TYPE ALL ENTRIES -- ENCLOSE WITH PHOTOGRAPH.

1 NAME

HISTORIC Kalaupapa Leprosy Settlement

AND/OR COMMON

Kalawao Settlement, Kalaupapa Peninsula

2 LOCATION

CITY, TOWN Kalaupapa Peninsula VICINITY OF Moloka'i COUNTY Kalawao and STATE Hawaii
Island Maui

3 PHOTO REFERENCE

PHOTO CREDIT NPS (Apple)

DATE OF PHOTO 8/6/75

NEGATIVE FILED AT HI State Office, NPS, 677 Ala Moana Blvd., Suite 512, Honolulu, HI 96813

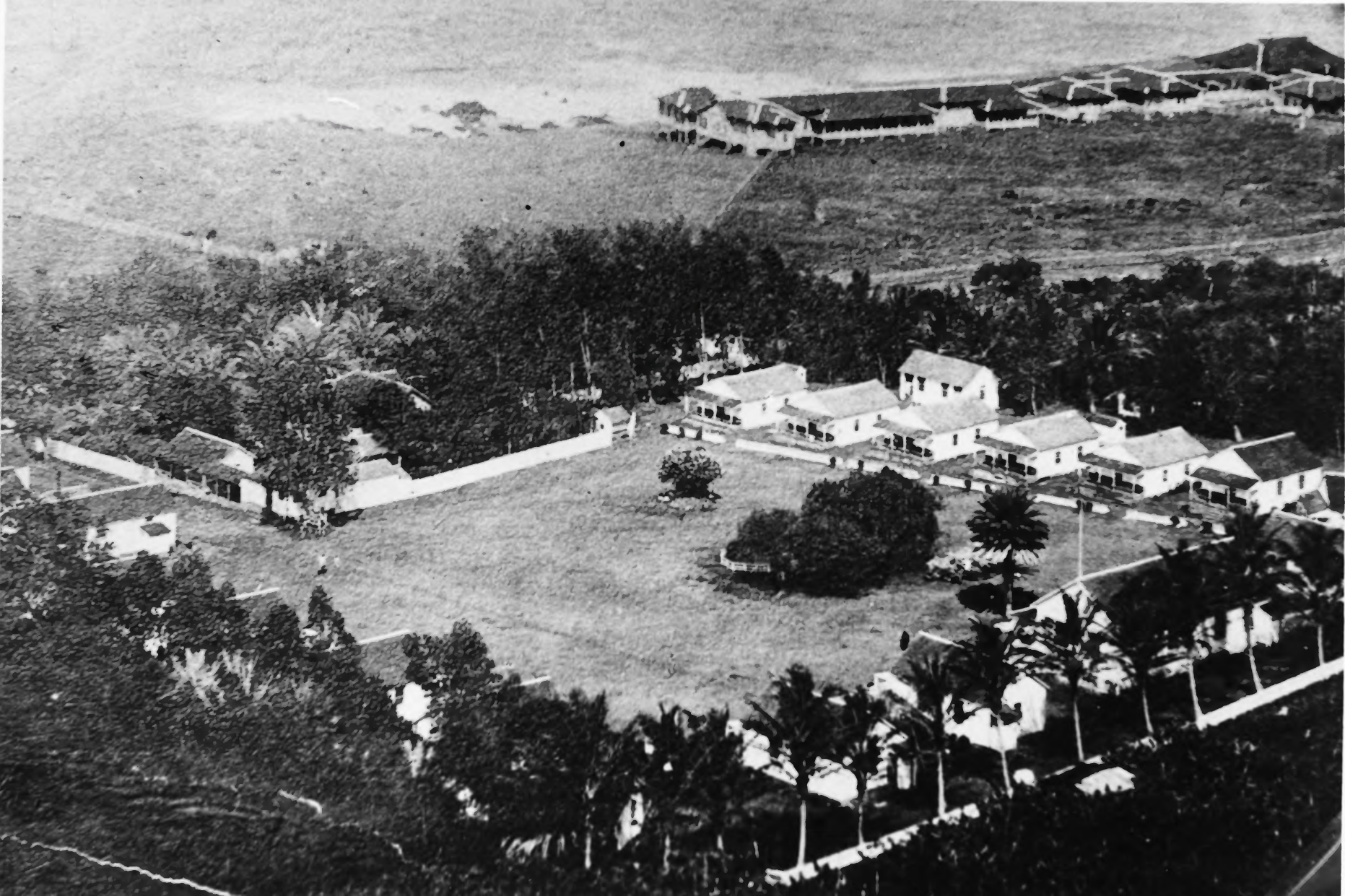
4 IDENTIFICATION

DESCRIBE VIEW, DIRECTION, ETC. IF DISTRICT, GIVE BUILDING NAME & STREET

A rectangular stone walled enclosure, probably a house site from the leper period. Looking south. Waikolu valley in left background; Waialeia valley in right background.

PHOTO NO. Roll V-
12A

KALAUPAPA NO. 11



UNITED STATES DEPARTMENT OF THE INTERIOR
NATIONAL PARK SERVICE

NATIONAL REGISTER OF HISTORIC PLACES
PROPERTY PHOTOGRAPH FORM

FOR NPS USE ONLY

RECEIVED

DATE ENTERED

SEE INSTRUCTIONS IN *HOW TO COMPLETE NATIONAL REGISTER FORMS*
TYPE ALL ENTRIES -- ENCLOSE WITH PHOTOGRAPH

1 NAME

HISTORIC Kalaupapa Leprosy Settlement

AND/OR COMMON

Kalawao Settlement, Kalaupapa Peninsula

2 LOCATION

CITY, TOWN Kalaupapa Peninsula VICINITY OF Moloka'i COUNTY Kalawao and STATE Hawaii
Island Maui

3 PHOTO REFERENCE

PHOTO CREDIT NPS (Apple)

DATE OF PHOTO 8/6/75 (copy of
early photograph made
ca. 1915)

NEGATIVE FILED AT HI State Office, NPS, 677 Ala Moana Blvd.,
Suite 512, Honolulu, HI 96813

4 IDENTIFICATION

DESCRIBE VIEW, DIRECTION, ETC. IF DISTRICT, GIVE BUILDING NAME & STREET

PHOTO NO. Roll IV-23

Kalawao Settlement, ca. 1915. Foreground: Baldwin Home for Boys.
Background: U.S. Leprosy Investigation Hospital, after closing.
Looking northeast.

KALAUAPAPA NO. 12



UNITED STATES DEPARTMENT OF THE INTERIOR
NATIONAL PARK SERVICE

NATIONAL REGISTER OF HISTORIC PLACES
PROPERTY PHOTOGRAPH FORM

FOR NPS USE ONLY

RECEIVED

DATE ENTERED

SEE INSTRUCTIONS IN *HOW TO COMPLETE NATIONAL REGISTER FORMS*
TYPE ALL ENTRIES -- ENCLOSE WITH PHOTOGRAPH.

1 NAME

HISTORIC Kalaupapa Leprosy Settlement

AND/OR COMMON

Kalawao Settlement, Kalaupapa Peninsula

2 LOCATION

CITY/TOWN Kalaupapa Peninsula VICINITY OF Moloka'i COUNTY Kalawao and STATE Hawaii
Island Maui

3 PHOTO REFERENCE

PHOTO CREDIT NPS (Apple)

DATE OF PHOTO 8/6/75

NEGATIVE FILED AT HI State Office, NPS, 677 Ala Moana Blvd., Suite 512, Honolulu, HI 96813

4 IDENTIFICATION

DESCRIBE VIEW, DIRECTION, ETC. IF DISTRICT, GIVE BUILDING NAME & STREET

Kalawina Church building, Kalaupapa. Built 1847,
rebuilt 1853; now used for storage. Looking northwest.

PHOTO NO. Roll III-
20



SILOAMA
PENTECOSTAL CHURCH

UNITED STATES DEPARTMENT OF THE INTERIOR
NATIONAL PARK SERVICE

NATIONAL REGISTER OF HISTORIC PLACES
PROPERTY PHOTOGRAPH FORM

FOR NPS USE ONLY

RECEIVED

DATE ENTERED

SEE INSTRUCTIONS IN *HOW TO COMPLETE NATIONAL REGISTER FORMS*
TYPE ALL ENTRIES --ENCLOSE WITH PHOTOGRAPH.

1 NAME

HISTORIC Kalaupapa Leprosy Settlement

AND/OR COMMON

Kalawao Settlement, Kalaupapa Peninsula

2 LOCATION

CITY/TOWN Kalaupapa Peninsula VICINITY OF Moloka'i COUNTY Kalawao and STATE Hawaii
Island Maui

3 PHOTO REFERENCE

PHOTO CREDIT NPS (Apple)

DATE OF PHOTO 8/6/75

NEGATIVE FILED AT HI State Office, NPS, 677 Ala Moana Blvd., Suite 512, Honolulu, HI 96813

4 IDENTIFICATION

DESCRIBE VIEW, DIRECTION, ETC. IF DISTRICT, GIVE BUILDING NAME & STREET

PHOTO NO. Roll V-31

Siloama Church, Kalawao. Looking southwest.



ST. PHILOMENA
FATHER DAMIEN'S CHURCH
WING ON THE LEFT WAS THE
FIRST CHAPEL BUILT IN 1872
- FATHER DAMIEN, O.S.A.

UNITED STATES DEPARTMENT OF THE INTERIOR
NATIONAL PARK SERVICE

NATIONAL REGISTER OF HISTORIC PLACES
PROPERTY PHOTOGRAPH FORM

FOR NPS USE ONLY

RECEIVED

DATE ENTERED

SEE INSTRUCTIONS IN *HOW TO COMPLETE NATIONAL REGISTER FORMS*
TYPE ALL ENTRIES -- ENCLOSE WITH PHOTOGRAPH.

1 NAME

HISTORIC Kalaupapa Leprosy Settlement

AND/OR COMMON

Kalawao Settlement, Kalaupapa Peninsula

2 LOCATION

CITY/TOWN Kalaupapa Peninsula VICINITY OF Moloka'i Island COUNTY Kalawao and Maui STATE Hawaii

3 PHOTO REFERENCE

PHOTO CREDIT NPS (Apple)

DATE OF PHOTO 8/6/75

NEGATIVE FILED AT HI State Office, NPS, 677 Ala Moana Blvd., Suite 512, Honolulu, HI 96813

4 IDENTIFICATION

DESCRIBE VIEW, DIRECTION, ETC. IF DISTRICT, GIVE BUILDING NAME & STREET
St. Philomena Church, Kalawao. Looking northwest.

PHOTO NO. Roll V-33



UNITED STATES DEPARTMENT OF THE INTERIOR
NATIONAL PARK SERVICE

NATIONAL REGISTER OF HISTORIC PLACES
PROPERTY PHOTOGRAPH FORM

FOR NPS USE ONLY

RECEIVED

DATE ENTERED

SEE INSTRUCTIONS IN *HOW TO COMPLETE NATIONAL REGISTER FORMS*
TYPE ALL ENTRIES -- ENCLOSE WITH PHOTOGRAPH

1 NAME

HISTORIC Kalaupapa Leprosy Settlement

AND/OR COMMON

Kalawao Settlement, Kalaupapa Peninsula

2 LOCATION

CITY, TOWN Kalaupapa Peninsula — VICINITY OF Moloka'i COUNTY Kalawao and STATE Hawaii
Island Maui

3 PHOTO REFERENCE

PHOTO CREDIT NPS (Apple)

DATE OF PHOTO 8/6/75

NEGATIVE FILED AT HI State Office, NPS, 677 Ala Moana Blvd., Suite 512, Honolulu, HI 96813

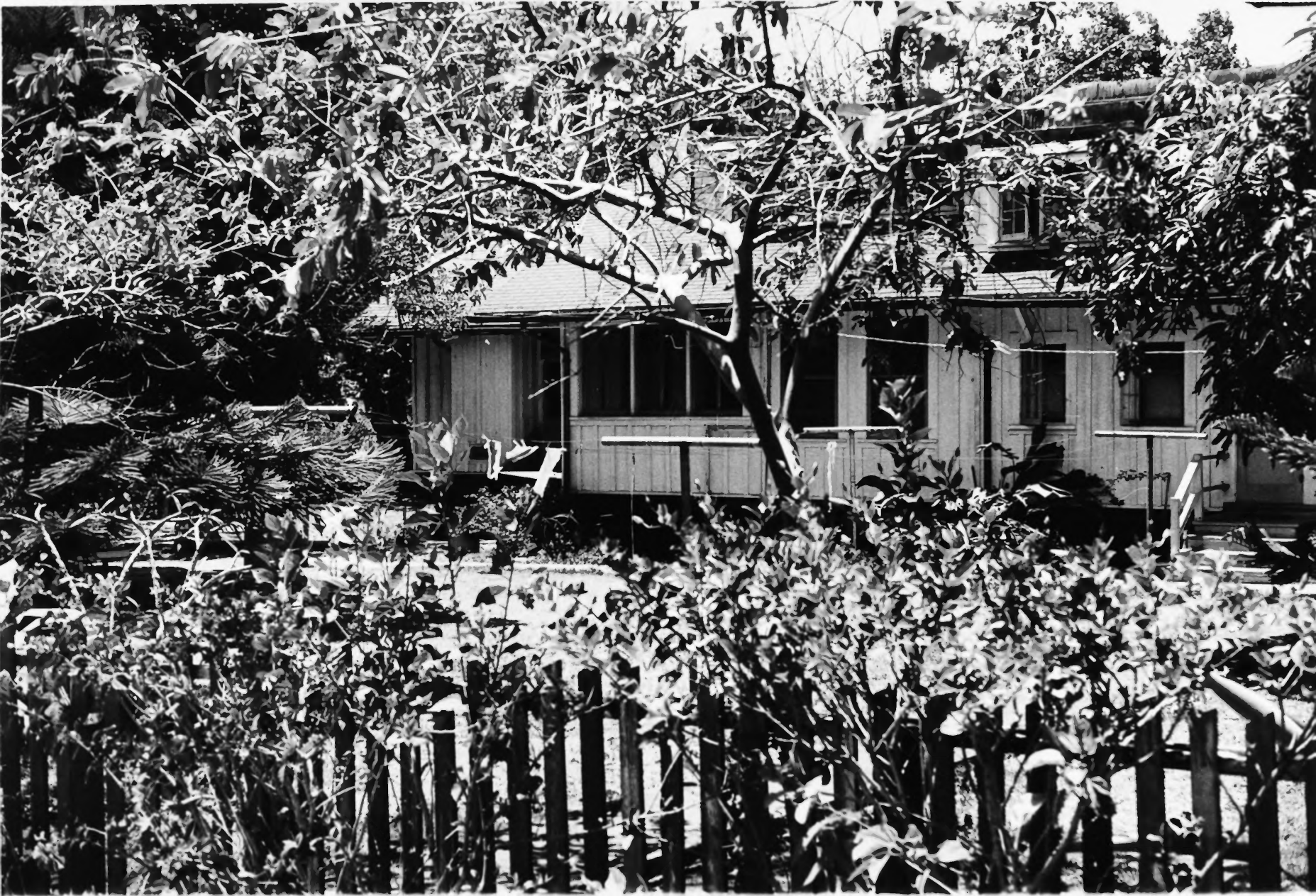
4 IDENTIFICATION

DESCRIBE VIEW, DIRECTION, ETC. IF DISTRICT, GIVE BUILDING NAME & STREET

Ruins, Baldwin Home for Boys, ~~Kalaupapa~~
Kalawao

PHOTO NO. Roll II-
19A

KALAUAPAPA NO. 16



UNITED STATES DEPARTMENT OF THE INTERIOR
NATIONAL PARK SERVICE

NATIONAL REGISTER OF HISTORIC PLACES
PROPERTY PHOTOGRAPH FORM

FOR NPS USE ONLY

RECEIVED

DATE ENTERED

SEE INSTRUCTIONS IN *HOW TO COMPLETE NATIONAL REGISTER FORMS*
TYPE ALL ENTRIES -- ENCLOSE WITH PHOTOGRAPH.

1 NAME

HISTORIC Kalaupapa Leprosy Settlement

AND/OR COMMON

Kalawao Settlement, Kalaupapa Peninsula

2 LOCATION

CITY, TOWN Kalaupapa Peninsula VICINITY OF Moloka'i Island COUNTY Kalawao and Maui STATE Hawaii

3 PHOTO REFERENCE

PHOTO CREDIT NPS (Apple)

DATE OF PHOTO 8/6/75

NEGATIVE FILED AT HI State Office, NPS, 677 Ala Moana Blvd., Suite 512, Honolulu, HI 96813

4 IDENTIFICATION

DESCRIBE VIEW, DIRECTION, ETC. IF DISTRICT. GIVE BUILDING NAME & STREET
Rear view of Bishop Home for Girls, Kalaupapa.
Looking northeast.

PHOTO NO. Roll III-
10

KALAUPAPA NO. 17



UNITED STATES DEPARTMENT OF THE INTERIOR
NATIONAL PARK SERVICE

NATIONAL REGISTER OF HISTORIC PLACES
PROPERTY PHOTOGRAPH FORM

FOR NPS USE ONLY
RECEIVED
DATE ENTERED

SEE INSTRUCTIONS IN HOW TO COMPLETE NATIONAL REGISTER FORMS
TYPE ALL ENTRIES -- ENCLOSE WITH PHOTOGRAPH

1 NAME

HISTORIC Kalaupapa Leprosy Settlement

AND/OR COMMON

Kalawao Settlement, Kalaupapa Peninsula

2 LOCATION

CITY, TOWN Kalaupapa Peninsula VICINITY OF Moloka'i COUNTY Kalawao and STATE Hawaii
Island Maui

3 PHOTO REFERENCE

PHOTO CREDIT NPS (Apple)

DATE OF PHOTO 8/6/75

NEGATIVE FILED AT HI State Office, NPS, 677 Ala Moana Blvd., Suite 512, Honolulu, HI 96813

4 IDENTIFICATION

DESCRIBE VIEW, DIRECTION, ETC. IF DISTRICT, GIVE BUILDING NAME & STREET

PHOTO NO. Roll III-
11

St. Elizabeth's chapel, Bishop Home for Girls, Kalaupapa.
Looking southeast.



UNITED STATES DEPARTMENT OF THE INTERIOR
NATIONAL PARK SERVICE

NATIONAL REGISTER OF HISTORIC PLACES
PROPERTY PHOTOGRAPH FORM

FOR NPS USE ONLY

RECEIVED

DATE ENTERED

SEE INSTRUCTIONS IN *HOW TO COMPLETE NATIONAL REGISTER FORMS*
TYPE ALL ENTRIES -- ENCLOSE WITH PHOTOGRAPH

1 NAME

HISTORIC Kalaupapa Leprosy Settlement

AND/OR COMMON

Kalawao Settlement, Kalaupapa Peninsula

2 LOCATION

CITY, TOWN Kalaupapa Peninsula VICINITY OF Moloka'i COUNTY Kalawao and STATE Hawaii
Island Maui

3 PHOTO REFERENCE

PHOTO CREDIT NPS (Apple)

DATE OF PHOTO 8/6/75

NEGATIVE FILED AT HI State Office, NPS, 677 Ala Moana Blvd., Suite 512, Honolulu, HI 96813

4 IDENTIFICATION

DESCRIBE VIEW, DIRECTION, ETC. IF DISTRICT, GIVE BUILDING NAME & STREET

PHOTO NO. Roll III-
8

Abandoned house behind St. Elizabeth's chapel, Bishop Home
for Girls, Kalaupapa. Looking northeast.



UNITED STATES DEPARTMENT OF THE INTERIOR
NATIONAL PARK SERVICE

NATIONAL REGISTER OF HISTORIC PLACES
PROPERTY PHOTOGRAPH FORM

FOR NPS USE ONLY

RECEIVED

DATE ENTERED

SEE INSTRUCTIONS IN *HOW TO COMPLETE NATIONAL REGISTER FORMS*
TYPE ALL ENTRIES -- ENCLOSE WITH PHOTOGRAPH.

1 NAME

HISTORIC Kalaupapa Leprosy Settlement

AND/OR COMMON

Kalawao Settlement, Kalaupapa Peninsula

2 LOCATION

CITY, TOWN Kalaupapa Peninsula VICINITY OF Moloka'i COUNTY Kalawao and STATE Hawaii
Island Maui

3 PHOTO REFERENCE

PHOTO CREDIT NPS (Apple)

DATE OF PHOTO 8/6/75

NEGATIVE FILED AT HI State Office, NPS, 677 Ala Moana Blvd., Suite 512, Honolulu, HI 96813

4 IDENTIFICATION

DESCRIBE VIEW, DIRECTION, ETC. IF DISTRICT, GIVE BUILDING NAME & STREET
St Francis Church, Kalaupapa. Looking west.

PHOTO NO. Roll III-
15

A black and white photograph showing a fence made of wooden posts and wire. A sign is attached to the first post on the left. The sign reads "OLD FEDERAL HOSPITAL" and "1908-15". The background is filled with dense tropical vegetation, including palm trees and various leafy plants. The lighting is bright, creating high contrast between the dark foliage and the lighter sky and fence.

**OLD FEDERAL
HOSPITAL**

1908-15

UNITED STATES DEPARTMENT OF THE INTERIOR
NATIONAL PARK SERVICE

NATIONAL REGISTER OF HISTORIC PLACES
PROPERTY PHOTOGRAPH FORM

FOR NPS USE ONLY

RECEIVED

DATE ENTERED

SEE INSTRUCTIONS IN *HOW TO COMPLETE NATIONAL REGISTER FORMS*
TYPE ALL ENTRIES -- ENCLOSE WITH PHOTOGRAPH.

1 NAME

HISTORIC Kalaupapa Leprosy Settlement.

AND/OR COMMON

Kalawao Settlement, Kalaupapa Peninsula

2 LOCATION

CITY, TOWN Kalaupapa Peninsula VICINITY OF Moloka'i Island COUNTY Kalawao and Maui STATE Hawaii

3 PHOTO REFERENCE

PHOTO CREDIT NPS (Apple)

DATE OF PHOTO 8/6/75

NEGATIVE FILED AT HI State Office, NPS, 677 Ala Moana Blvd., Suite 512, Honolulu, HI 96813

4 IDENTIFICATION

DESCRIBE VIEW, DIRECTION, ETC. IF DISTRICT, GIVE BUILDING NAME & STREET

Pillars, U. S. Leprosy Investigation Station, Kalawao.

PHOTO NO. Roll II-
14A



UNITED STATES DEPARTMENT OF THE INTERIOR
NATIONAL PARK SERVICE

NATIONAL REGISTER OF HISTORIC PLACES
PROPERTY PHOTOGRAPH FORM

FOR NPS USE ONLY

RECEIVED

DATE ENTERED

SEE INSTRUCTIONS IN *HOW TO COMPLETE NATIONAL REGISTER FORMS*
TYPE ALL ENTRIES -- ENCLOSE WITH PHOTOGRAPH.

1 NAME

HISTORIC Kalaupapa Leprosy Settlement

AND/OR COMMON

Kalawao Settlement, Kalaupapa Peninsula

2 LOCATION

CITY, TOWN Kalaupapa Peninsula VICINITY OF Moloka'i COUNTY Kalawao and STATE Hawaii
Island Maui

3 PHOTO REFERENCE

PHOTO CREDIT NPS (Apple)

DATE OF PHOTO 8/6/75

NEGATIVE FILED AT HI State Office, NPS, 677 Ala Moana Blvd., Suite 512, Honolulu, HI 96813

4 IDENTIFICATION

DESCRIBE VIEW, DIRECTION, ETC. IF DISTRICT, GIVE BUILDING NAME & STREET

Chimney of bakery, Kalawao. Looking northeast.

PHOTO NO. Roll II-
23

KALAUAPAPA NO. 22



UNITED STATES DEPARTMENT OF THE INTERIOR
NATIONAL PARK SERVICE

NATIONAL REGISTER OF HISTORIC PLACES
PROPERTY PHOTOGRAPH FORM

FOR NPS USE ONLY

RECEIVED

DATE ENTERED

SEE INSTRUCTIONS IN *HOW TO COMPLETE NATIONAL REGISTER FORMS*
TYPE ALL ENTRIES -- ENCLOSE WITH PHOTOGRAPH.

1 NAME

HISTORIC Kalaupapa Leprosy Settlement

AND/OR COMMON

Kalawao Settlement, Kalaupapa Peninsula

2 LOCATION

CITY, TOWN Kalaupapa Peninsula VICINITY OF Moloka'i COUNTY Kalawao and STATE Hawaii
Island Maui

3 PHOTO REFERENCE

PHOTO CREDIT NPS (Apple)

DATE OF PHOTO 8/6/75

NEGATIVE FILED AT HI State Office, NPS, 677 Ala Moana Blvd., Suite 512, Honolulu, HI 96813

4 IDENTIFICATION

DESCRIBE VIEW, DIRECTION, ETC. IF DISTRICT, GIVE BUILDING NAME & STREET

PHOTO NO. Roll I-
30A

Steps, Mormon beach house, Makanalua.
Steps are west of lighthouse. Looking west.



UNITED STATES DEPARTMENT OF THE INTERIOR
NATIONAL PARK SERVICE

NATIONAL REGISTER OF HISTORIC PLACES
PROPERTY PHOTOGRAPH FORM

FOR NPS USE ONLY

RECEIVED

DATE ENTERED

SEE INSTRUCTIONS IN *HOW TO COMPLETE NATIONAL REGISTER FORMS*
TYPE ALL ENTRIES -- ENCLOSE WITH PHOTOGRAPH

1 NAME

HISTORIC Kalaupapa Leprosy Settlement

AND/OR COMMON

Kalawao Settlement, Kalaupapa Peninsula

2 LOCATION

CITY, TOWN Kalaupapa Peninsula VICINITY OF Moloka'i COUNTY Kalawao and STATE Hawaii
Island Maui

3 PHOTO REFERENCE

PHOTO CREDIT NPS (Apple)

DATE OF PHOTO 8/6/75

NEGATIVE FILED AT HI State Office, NPS, 677 Ala Moana Blvd., Suite 512, Honolulu, HI 96813

4 IDENTIFICATION

DESCRIBE VIEW, DIRECTION, ETC. IF DISTRICT, GIVE BUILDING NAME & STREET
Patient's cottage (Marks Sr.), Kalaupapa.

PHOTO NO. Roll III-
27

KALAUPAPA NO. 24



UNITED STATES DEPARTMENT OF THE INTERIOR
NATIONAL PARK SERVICE

NATIONAL REGISTER OF HISTORIC PLACES
PROPERTY PHOTOGRAPH FORM

FOR NPS USE ONLY

RECEIVED

DATE ENTERED

SEE INSTRUCTIONS IN *HOW TO COMPLETE NATIONAL REGISTER FORMS*
TYPE ALL ENTRIES -- ENCLOSE WITH PHOTOGRAPH.

1 NAME

HISTORIC Kalaupapa Leprosy Settlement

AND/OR COMMON

Kalawao Settlement, Kalaupapa Peninsula

2 LOCATION

CITY, TOWN Kalaupapa Peninsula VICINITY OF Moloka'i COUNTY Kalawao and STATE Hawaii
Island Maui

3 PHOTO REFERENCE

PHOTO CREDIT NPS (Apple)

DATE OF PHOTO 8/6/75

NEGATIVE FILED AT HI State Office, NPS, 677 Ala Moana Blvd., Suite 512, Honolulu, HI 96813

4 IDENTIFICATION

DESCRIBE VIEW, DIRECTION, ETC. IF DISTRICT, GIVE BUILDING NAME & STREET

Patient's cottage (Sara's), Kalaupapa.

PHOTO NO. Roll III-
26



UNITED STATES DEPARTMENT OF THE INTERIOR
NATIONAL PARK SERVICE

NATIONAL REGISTER OF HISTORIC PLACES
PROPERTY PHOTOGRAPH FORM

FOR NPS USE ONLY

RECEIVED

DATE ENTERED

SEE INSTRUCTIONS IN *HOW TO COMPLETE NATIONAL REGISTER FORMS*
TYPE ALL ENTRIES -- ENCLOSE WITH PHOTOGRAPH.

1 NAME

HISTORIC Kalaupapa Leprosy Settlement

AND/OR COMMON

Kalawao Settlement, Kalaupapa Peninsula

2 LOCATION

CITY, TOWN Kalaupapa Peninsula VICINITY OF Moloka'i COUNTY Kalawao and STATE Hawaii
Island Maui

3 PHOTO REFERENCE

PHOTO CREDIT NPS (Apple)

DATE OF PHOTO 8/6/75

NEGATIVE FILED AT HI State Office, NPS, 677 Ala Moana Blvd., Suite 512, Honolulu, HI 96813

4 IDENTIFICATION

DESCRIBE VIEW, DIRECTION, ETC. IF DISTRICT, GIVE BUILDING NAME & STREET
Patient's cottage, Kalaupapa. Looking southwest.

PHOTO NO. Roll III-
6



UNITED STATES DEPARTMENT OF THE INTERIOR
NATIONAL PARK SERVICE

NATIONAL REGISTER OF HISTORIC PLACES
PROPERTY PHOTOGRAPH FORM

FOR NPS USE ONLY

RECEIVED

DATE ENTERED

SEE INSTRUCTIONS IN *HOW TO COMPLETE NATIONAL REGISTER FORMS*
TYPE ALL ENTRIES -- ENCLOSE WITH PHOTOGRAPH

1 NAME

HISTORIC Kalaupapa Leprosy Settlement

AND/OR COMMON

Kalawao Settlement, Kalaupapa Peninsula

2 LOCATION

CITY, TOWN Kalaupapa Peninsula VICINITY OF Moloka'i COUNTY Kalawao and STATE Hawaii
Island Maui

3 PHOTO REFERENCE

PHOTO CREDIT NPS (Apple)

DATE OF PHOTO 8/6/75

NEGATIVE FILED AT HI State Office, NPS, 677 Ala Moana Blvd., Suite 512, Honolulu, HI 96813

4 IDENTIFICATION

DESCRIBE VIEW, DIRECTION, ETC. IF DISTRICT, GIVE BUILDING NAME & STREET
Kanaana Hou church, Kalaupapa. Looking southwest.

PHOTO NO. Roll III-
12



UNITED STATES DEPARTMENT OF THE INTERIOR
NATIONAL PARK SERVICE

NATIONAL REGISTER OF HISTORIC PLACES
PROPERTY PHOTOGRAPH FORM

FOR NPS USE ONLY

RECEIVED

DATE ENTERED

SEE INSTRUCTIONS IN *HOW TO COMPLETE NATIONAL REGISTER FORMS*
TYPE ALL ENTRIES -- ENCLOSE WITH PHOTOGRAPH.

1 NAME

HISTORIC Kalaupapa Leprosy Settlement

AND/OR COMMON

Kalawao Settlement, Kalaupapa Peninsula

2 LOCATION

CITY, TOWN Kalaupapa Peninsula VICINITY OF Moloka'i COUNTY Kalawao and STATE Hawaii
Island Maui

3 PHOTO REFERENCE

PHOTO CREDIT NPS (Apple)

DATE OF PHOTO 8/6/75

NEGATIVE FILED AT HI State Office, NPS, 677 Ala Moana Blvd., Suite 512, Honolulu, HI 96813

4 IDENTIFICATION

DESCRIBE VIEW, DIRECTION, ETC. IF DISTRICT, GIVE BUILDING NAME & STREET

Bay View Home, Kalaupapa.

PHOTO NO. Roll III-
31

KALAUPAPA NO. 28



UNITED STATES DEPARTMENT OF THE INTERIOR
NATIONAL PARK SERVICE

NATIONAL REGISTER OF HISTORIC PLACES
PROPERTY PHOTOGRAPH FORM

FOR NPS USE ONLY

RECEIVED

DATE ENTERED

SEE INSTRUCTIONS IN *HOW TO COMPLETE NATIONAL REGISTER FORMS*
TYPE ALL ENTRIES --ENCLOSE WITH PHOTOGRAPH.

1 NAME

HISTORIC Kalaupapa Leprosy Settlement

AND/OR COMMON

Kalawao Settlement, Kalaupapa Peninsula

2 LOCATION

CITY, TOWN Kalaupapa Peninsula VICINITY OF Moloka'i COUNTY Kalawao and STATE Hawaii
Island Maui

3 PHOTO REFERENCE

PHOTO CREDIT NPS (Apple)

DATE OF PHOTO 8/6/75

NEGATIVE FILED AT HI State Office, NPS, 677 Ala Moana Blvd., Suite 512, Honolulu, HI 96813

4 IDENTIFICATION

DESCRIBE VIEW, DIRECTION, ETC. IF DISTRICT, GIVE BUILDING NAME & STREET
Hospital, Kalaupapa. Looking north.

PHOTO NO. Roll III-
32



PASCHOAL
COMMUNITY HALL

Work Progress
No. 1 & 2 Street

UNITED STATES DEPARTMENT OF THE INTERIOR
NATIONAL PARK SERVICE

NATIONAL REGISTER OF HISTORIC PLACES
PROPERTY PHOTOGRAPH FORM

FOR NPS USE ONLY

RECEIVED

DATE ENTERED

SEE INSTRUCTIONS IN *HOW TO COMPLETE NATIONAL REGISTER FORMS*
TYPE ALL ENTRIES -- ENCLOSE WITH PHOTOGRAPH.

1 NAME

HISTORIC Kalaupapa Leprosy Settlement

AND/OR COMMON

Kalawao Settlement, Kalaupapa Peninsula

2 LOCATION

CITY, TOWN Kalaupapa Peninsula VICINITY OF Moloka'i COUNTY Kalawao and STATE Hawaii
Island Maui

3 PHOTO REFERENCE

PHOTO CREDIT NPS (Apple)

DATE OF PHOTO 8/6/75

NEGATIVE FILED AT HI State Office, NPS, 677 Ala Moana Blvd., Suite 512, Honolulu, HI 96813

4 IDENTIFICATION

DESCRIBE VIEW, DIRECTION, ETC. IF DISTRICT, GIVE BUILDING NAME & STREET
Paschoal Community Hall, Kalaupapa.
Looking northeast.

PHOTO NO. Roll III-
17



UNITED STATES DEPARTMENT OF THE INTERIOR
NATIONAL PARK SERVICE

NATIONAL REGISTER OF HISTORIC PLACES
PROPERTY PHOTOGRAPH FORM

FOR NPS USE ONLY

RECEIVED

DATE ENTERED

SEE INSTRUCTIONS IN *HOW TO COMPLETE NATIONAL REGISTER FORMS*
TYPE ALL ENTRIES -- ENCLOSE WITH PHOTOGRAPH

1 NAME

HISTORIC Kalaupapa Leprosy Settlement

AND/OR COMMON

Kalawao Settlement, Kalaupapa Peninsula

2 LOCATION

CITY, TOWN Kalaupapa Peninsula VICINITY OF Moloka'i COUNTY Kalawao and STATE Hawaii
Island Maui

3 PHOTO REFERENCE

PHOTO CREDIT NPS (Apple)

DATE OF PHOTO 8/6/75

NEGATIVE FILED AT HI State Office, NPS, 677 Ala Moana Blvd., Suite 512, Honolulu, HI 96813

4 IDENTIFICATION

DESCRIBE VIEW, DIRECTION, ETC. IF DISTRICT. GIVE BUILDING NAME & STREET
Administrator's house, Staff row, Kalaupapa.

PHOTO NO. Roll III-
23



UNITED STATES DEPARTMENT OF THE INTERIOR
NATIONAL PARK SERVICE

NATIONAL REGISTER OF HISTORIC PLACES
PROPERTY PHOTOGRAPH FORM

FOR NPS USE ONLY

RECEIVED

DATE ENTERED

SEE INSTRUCTIONS IN *HOW TO COMPLETE NATIONAL REGISTER FORMS*
TYPE ALL ENTRIES -- ENCLOSE WITH PHOTOGRAPH.

1 NAME

HISTORIC Kalaupapa Leprosy Settlement

AND/OR COMMON

Kalawao Settlement, Kalaupapa Peninsula

2 LOCATION

CITY, TOWN Kalaupapa Peninsula — VICINITY OF Moloka'i COUNTY Kalawao and STATE Hawaii
Island Maui

3 PHOTO REFERENCE

PHOTO CREDIT NPS (Apple)

DATE OF PHOTO 8/6/75

NEGATIVE FILED AT HI State Office, NPS, 677 Ala Moana Blvd., Suite 512, Honolulu, HI 96813

4 IDENTIFICATION

DESCRIBE VIEW, DIRECTION, ETC. IF DISTRICT. GIVE BUILDING NAME & STREET

(Center): Former "doctor's house" now staff dining hall,
Staff row, Kalaupapa.
Looking northeast.

PHOTO NO. Roll III-
24

KALAUAPAPA NO. 32



UNITED STATES DEPARTMENT OF THE INTERIOR
NATIONAL PARK SERVICE

NATIONAL REGISTER OF HISTORIC PLACES
PROPERTY PHOTOGRAPH FORM

FOR NPS USE ONLY

RECEIVED

DATE ENTERED

SEE INSTRUCTIONS IN *HOW TO COMPLETE NATIONAL REGISTER FORMS*
TYPE ALL ENTRIES -- ENCLOSE WITH PHOTOGRAPH

1 NAME

HISTORIC Kalaupapa Leprosy Settlement

AND/OR COMMON

Kalawao Settlement, Kalaupapa Peninsula

2 LOCATION

CITY, TOWN Kalaupapa Peninsula VICINITY OF Moloka'i COUNTY Kalawao and STATE Hawaii
Island Maui

3 PHOTO REFERENCE

PHOTO CREDIT NPS (Apple)

DATE OF PHOTO 8/6/75

NEGATIVE FILED AT HI State Office, NPS, 677 Ala Moana Blvd., Suite 512, Honolulu, HI 96813

4 IDENTIFICATION

DESCRIBE VIEW, DIRECTION, ETC. IF DISTRICT, GIVE BUILDING NAME & STREET

On the flats along the east side of the peninsula are hundreds of C-shaped field shelter sites. View looking south - Waikolu valley in background.

PHOTO NO. Roll V-
15A



UNITED STATES DEPARTMENT OF THE INTERIOR
NATIONAL PARK SERVICE

NATIONAL REGISTER OF HISTORIC PLACES
PROPERTY PHOTOGRAPH FORM

FOR NPS USE ONLY

RECEIVED

DATE ENTERED

SEE INSTRUCTIONS IN *HOW TO COMPLETE NATIONAL REGISTER FORMS*
TYPE ALL ENTRIES --| ENCLOSE WITH PHOTOGRAPH.

1 NAME

HISTORIC Kalaupapa Leprosy Settlement

AND/OR COMMON

Kalawao Settlement, Kalaupapa Peninsula

2 LOCATION

CITY, TOWN Kalaupapa Peninsula VICINITY OF Moloka'i COUNTY Kalawao and STATE Hawaii
Island Maui

3 PHOTO REFERENCE

PHOTO CREDIT NPS (Apple)

DATE OF PHOTO 8/6/75

NEGATIVE FILED AT HI State Office, NPS, 677 Ala Moana Blvd., Suite 512, Honolulu, HI 96813

4 IDENTIFICATION

DESCRIBE VIEW, DIRECTION, ETC. IF DISTRICT, GIVE BUILDING NAME & STREET

PHOTO NO. Roll V-
8A

One of several structures identified by the Bishop Museum as canoe sheds. This one is near a late historic house site. Looking northeast from the entrance of the shelter.

KALAUPAPA NO. 34



UNITED STATES DEPARTMENT OF THE INTERIOR
NATIONAL PARK SERVICE

NATIONAL REGISTER OF HISTORIC PLACES
PROPERTY PHOTOGRAPH FORM

FOR NPS USE ONLY

RECEIVED

DATE ENTERED

SEE INSTRUCTIONS IN *HOW TO COMPLETE NATIONAL REGISTER FORMS*
TYPE ALL ENTRIES -- ENCLOSE WITH PHOTOGRAPH

1 NAME

HISTORIC Kalaupapa Leprosy Settlement

AND/OR COMMON

Kalawao Settlement, Kalaupapa Peninsula

2 LOCATION

CITY, TOWN Kalaupapa Peninsula VICINITY OF Moloka'i COUNTY Kalawao and STATE Hawaii
Island Maui

3 PHOTO REFERENCE

PHOTO CREDIT NPS (Apple)

DATE OF PHOTO 8/6/75

NEGATIVE FILED AT HI State Office, NPS, 677 Ala Moana Blvd., Suite 512, Honolulu, HI 96813

4 IDENTIFICATION

DESCRIBE VIEW, DIRECTION, ETC. IF DISTRICT, GIVE BUILDING NAME & STREET

PHOTO NO. Roll V-
24A

Near Kalawao Settlement. Hidden in the dense growth of exotic trees and shrubs are numerous archeological features. Destruction of resources by tree roots and roaming cattle.

KALAUPAPA NO. 35



UNITED STATES DEPARTMENT OF THE INTERIOR
NATIONAL PARK SERVICE

NATIONAL REGISTER OF HISTORIC PLACES
PROPERTY PHOTOGRAPH FORM

FOR NPS USE ONLY

RECEIVED

DATE ENTERED

SEE INSTRUCTIONS IN *HOW TO COMPLETE NATIONAL REGISTER FORMS*
TYPE ALL ENTRIES -- ENCLOSE WITH PHOTOGRAPH

1 NAME

HISTORIC Kalaupapa Leprosy Settlement

AND/OR COMMON

Kalawao Settlement, Kalaupapa Peninsula

2 LOCATION

CITY, TOWN Kalaupapa Peninsula VICINITY OF Moloka'i COUNTY Kalawao and STATE Hawaii
Island Maui

3 PHOTO REFERENCE

PHOTO CREDIT NPS (Apple)

DATE OF PHOTO 8/6/75

NEGATIVE FILED AT HI State Office, NPS, 677 Ala Moana Blvd., Suite 512, Honolulu, HI 96813

4 IDENTIFICATION

DESCRIBE VIEW, DIRECTION, ETC. IF DISTRICT, GIVE BUILDING NAME & STREET

PHOTO NO. Roll I-
23A

View from lighthouse looking south. Waikolu and Waihanau valleys in background. Many field shelters and field systems can be seen in the foreground. Kauhako Crater forms the high ground in the center of the photo.

KALAUAPAPA NO. 36



UNITED STATES DEPARTMENT OF THE INTERIOR
NATIONAL PARK SERVICE

NATIONAL REGISTER OF HISTORIC PLACES
PROPERTY PHOTOGRAPH FORM

FOR NPS USE ONLY

RECEIVED

DATE ENTERED

SEE INSTRUCTIONS IN *HOW TO COMPLETE NATIONAL REGISTER FORMS*
TYPE ALL ENTRIES -- ENCLOSE WITH PHOTOGRAPH

1 NAME

HISTORIC Kalaupapa Leprosy Settlement

AND/OR COMMON

Kalawao Settlement, Kalaupapa Peninsula

2 LOCATION

CITY, TOWN Kalaupapa Peninsula VICINITY OF Moloka'i COUNTY Kalawao and STATE Hawaii
Island Maui

3 PHOTO REFERENCE

PHOTO CREDIT NPS (Apple)

DATE OF PHOTO 8/6/75

NEGATIVE FILED AT HI State Office, NPS, 677 Ala Moana Blvd., Suite 512, Honolulu, HI 96813

4 IDENTIFICATION

DESCRIBE VIEW, DIRECTION, ETC. IF DISTRICT, GIVE BUILDING NAME & STREET

PHOTO NO. Roll V-
10A

Agricultural complex showing walled planting enclosures.
Looking south.



UNITED STATES DEPARTMENT OF THE INTERIOR
NATIONAL PARK SERVICE

NATIONAL REGISTER OF HISTORIC PLACES
PROPERTY PHOTOGRAPH FORM

FOR NPS USE ONLY

RECEIVED

DATE ENTERED

SEE INSTRUCTIONS IN HOW TO COMPLETE NATIONAL REGISTER FORMS
TYPE ALL ENTRIES -- ENCLOSE WITH PHOTOGRAPH.

1 NAME

HISTORIC Kalaupapa Leprosy Settlement

AND/OR COMMON

Kalawao Settlement, Kalaupapa Peninsula

2 LOCATION

CITY, TOWN Kalaupapa Peninsula VICINITY OF Moloka'i COUNTY Kalawao and STATE Hawaii
Island Maui

3 PHOTO REFERENCE

PHOTO CREDIT NPS (Apple)

DATE OF PHOTO 8/6/75

NEGATIVE FILED AT HI State Office, NPS, 677 Ala Moana Blvd., Suite 512, Honolulu, HI 96813

4 IDENTIFICATION

DESCRIBE VIEW, DIRECTION, ETC. IF DISTRICT, GIVE BUILDING NAME & STREET

PHOTO NO. Roll I-
36A

View from airport toward the lighthouse showing hundreds
of archeological features.



UNITED STATES DEPARTMENT OF THE INTERIOR
NATIONAL PARK SERVICE

NATIONAL REGISTER OF HISTORIC PLACES
PROPERTY PHOTOGRAPH FORM

FOR NPS USE ONLY

RECEIVED

DATE ENTERED

SEE INSTRUCTIONS IN *HOW TO COMPLETE NATIONAL REGISTER FORMS*
TYPE ALL ENTRIES -- ENCLOSE WITH PHOTOGRAPH

1 NAME

HISTORIC Kalaupapa Leprosy Settlement

AND/OR COMMON

Kalawao Settlement, Kalaupapa Peninsula

2 LOCATION

CITY, TOWN Kalaupapa Peninsula VICINITY OF Moloka'i COUNTY Kalawao and STATE Hawaii
Island Maui

3 PHOTO REFERENCE

PHOTO CREDIT NPS (Apple)

DATE OF PHOTO 8/6/75

NEGATIVE FILED AT HI State Office, NPS, 677 Ala Moana Blvd., Suite 512, Honolulu, HI 96813

4 IDENTIFICATION

DESCRIBE VIEW, DIRECTION, ETC. IF DISTRICT, GIVE BUILDING NAME & STREET

Seaward of Kalawao Settlement is a temple site constructed
of very large boulders. The site is in a poor state of repair.
Looking west toward Kalaupapa.

PHOTO NO. Roll II-
7A

KALAUPAPA NO. 39