



Bomberger's Distillery
7 mi. SW of Newmanstown off Pa. 501
Newmanstown, Pennsylvania

Photo No. 1

By: Ralph J. Christian, AASLH

Negative at: Historic Sites Survey

Date: February 1978

View: From northeast, showing north
sides and front (east) facades of
Still House and Jug House and portions
of modern structures.

Lebanon Co. PA

NHL

JAN 16 1980



Bomberger's Distillery
7 mi. SW of Newmanstown off Pa. 501
Newmanstown, Pennsylvania

Gettysburg Co. Pa.

Photo No. 2

By: Ralph J. Christian, AASLH

Negative at: Historic Sites Survey

Date: February 1978

View: From southeast, showing south side and front (east) facade of Jug House, front (east) facade of Still House, and portions of modern structures.

JAN 16 1980



Bomberger's Distillery

7 mi. SW of Newmanstown off Pa. 501

Newmanstown, Pennsylvania

Lebanon Co. Pa

Photo No. 3

By: Ralph J. Christian, AASLH

Negative at: Historic Sites Survey

Date: February 1978

View: From north, showing north side
of Still House and front (east)
facade and north side of Warehouse.

JAN 16 1980



Bomberger's Distillery
7 mi. SW of Newmanstown off Pa. 501
Newmanstown, Pennsylvania

Lebanon Co Pa
Photo No. 4

By: Ralph J. Christian, AASLH
Negative at: Historic Sites Survey
Date: February 1978

View: From southeast, showing south
side and front (east) facade of
Warehouse.

JAN 16 1980



NO PARKING

VISITORS

WATER'S DISTILLERY CO.
EST. 1850

DISTILLERY HOUSE

Bomberger's Distillery
7 mi. SW of Newmanstown off Pa. 501
Newmanstown, Pennsylvania

Photo No. 5

By: Ralph J. Christian, AASLH

Negative at: Historic Sites Survey

Date: February 1978

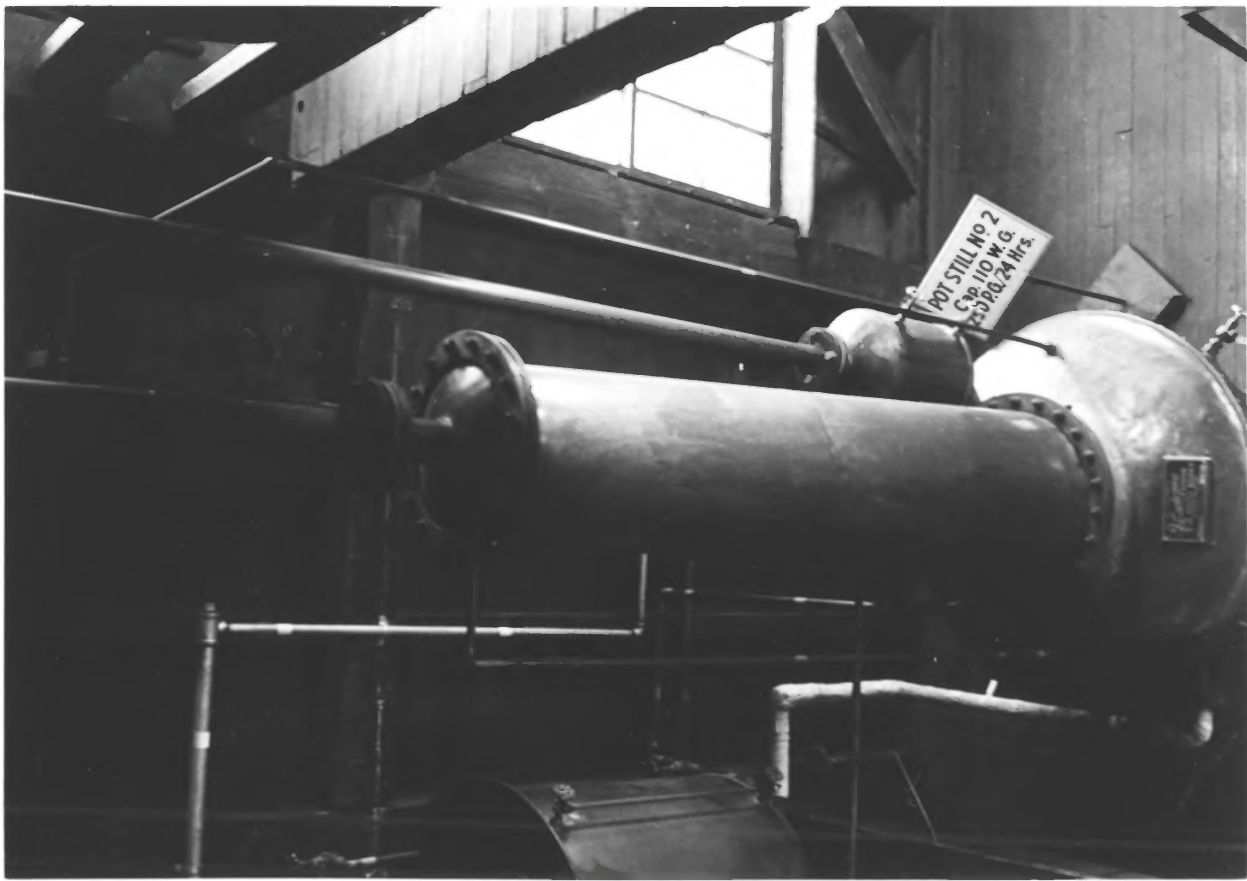
Lebanon Co. PA

View: From southeast, showing south
side and front (east) facade of
Still House.

JAN 16 1980

POT STILL No 2
Cap. 110 W G
2500.24 lbs.

W. G. & Co.



Bomberger's Distillery

7 mi. SW of Newmanstown off Pa. 501

Newmanstown, Pennsylvania

Lebanon Co. Pa

Photo No. 6

By: Ralph J. Christian, AASLH

Negative at: Historic Sites Survey

Date: February 1978

View: Reconstructed pot still in
Still House.



POT STILL NO 2
Cap 110 W G
250 PG 24 WLS

Bomberger's Distillery

7 mi. SW of Newmanstown off Pa. 501

Newmanstown, Pennsylvania

Lebanon Co., Pa.

Photo No. 7

Courtesy: Michter's Distillery, Inc.

View: Whiskey barrels and re-
constructed pot still in Still House.



CAN NO. 1
21.0 W.G.

CAN NO. 2
CAP. 21.0 W.G.

Bomberger's Distillery

7 mi. SW of Newmanstown off Pa. 501

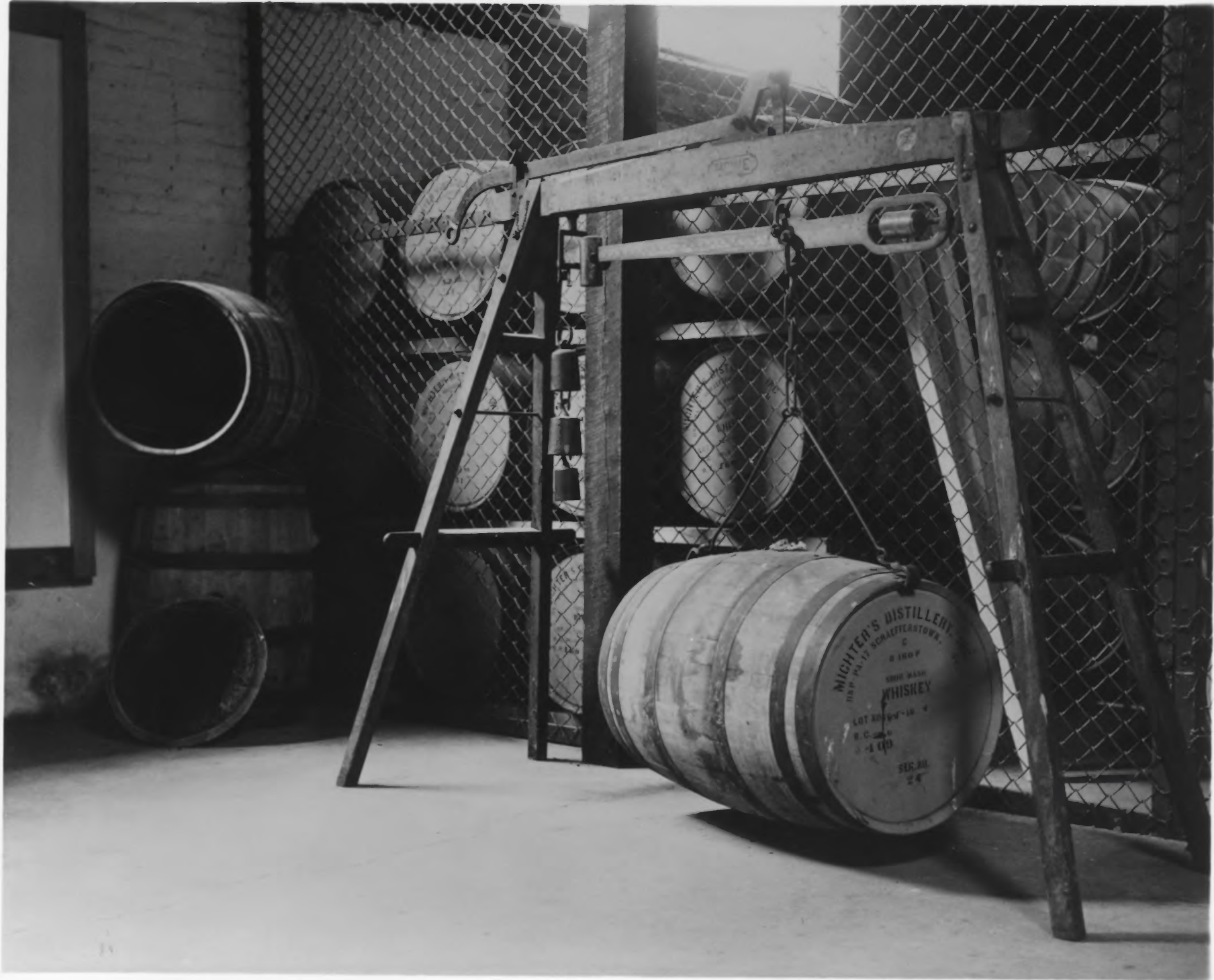
Newmanstown, Pennsylvania

Lebanon Co. PA

Photo No. 8

Courtesy: Michter's Distillery, Inc.

View: 150 year old Dona Cans located
in lower portion of distillery tower.



Bomberger's Distillery

7 mi. SW of Newmanstown off Pa. 501
Newmanstown, Pennsylvania

Photo No. 9

Courtesy: Michter's Distillery, Inc.

Lebanon Co. Pa

View: Howe Barrel Scale and storage
area located in warehouse.



A. S. BOMBERGER & SON
REGISTERED DISTILLERY
N.J.A.

BLGER
D. WARE

Bomberger's Distillery

7 mi. SW of Newmanstown off Pa. 501

Newmanstown, Pennsylvania

Lebanon Co. Pa

Photo No. 10

Courtesy: Michter's Distillery, Inc.

View: From northeast, showing exterior
of Still House and portion of
Warehouse as it appeared around
1900.

JAN 16 1980



Bomberger's Distillery

7 mi. SW of Newmanstown off Pa. 501
Newmanstown, Pennsylvania

Lebanon Co. Pa

Photo No. 11

Courtesy: Michter's Distillery, Inc.

View: From northeast, showing
distillery complex as it appeared
around 1933.