



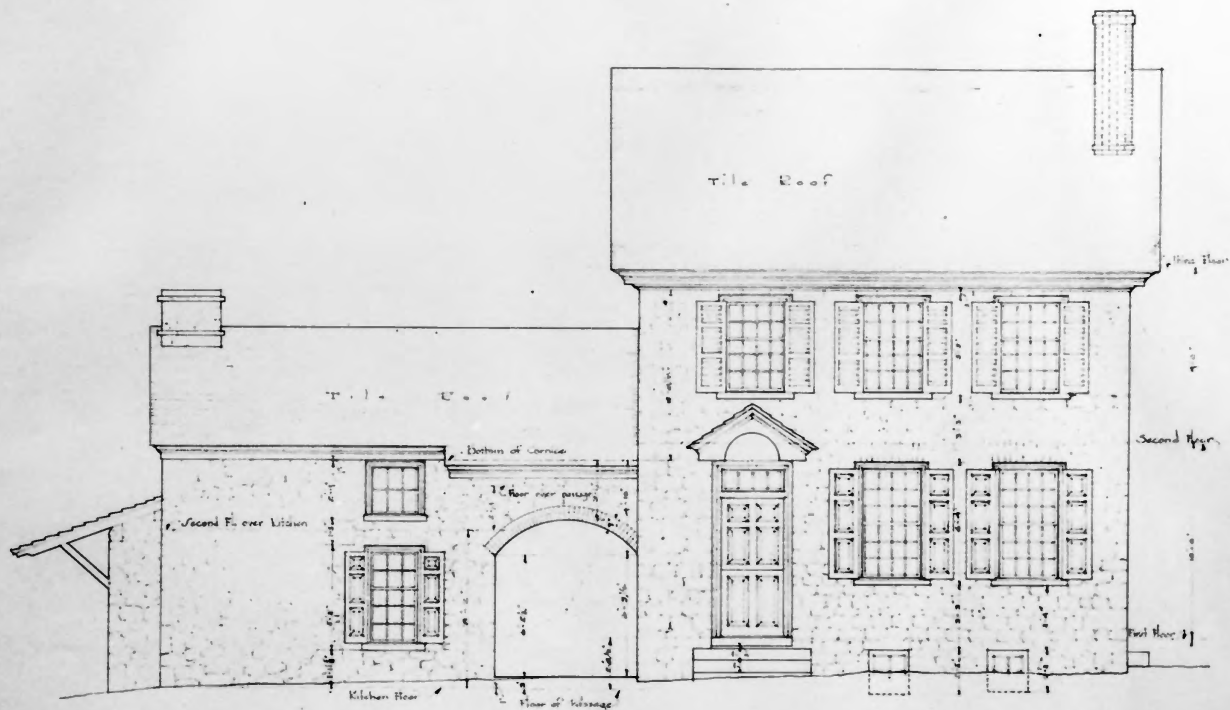
Washington's Headquarters (Potts House), Valley Forge, Pennsylvania

NPS Photo 1971



Washington's Headquarters (Potts House), Valley Forge, Pennsylvania

NPS Photo 1971



WEST ELEVATION
Stonework on West Front of Main Building is Squared and Laid in Courses

SHEET NO. 5
SCALE 3/4" = 1'-0"
MEASURED AND DRAWN BY
L.H. GELLERS
FEBRUARY - 1931

WASHINGTON'S VALLEY HEADQUARTERS FORGE

PREPARED BY THE COMMITTEE ON THE PRESERVATION OF HISTORIC MONUMENTS OF THE PHILADELPHIA CHAPTER OF THE AMERICAN INSTITUTE OF ARCHITECTS

Washington's Headquarters
Montgomery County, PA