



101 Ranch Historic District (Blacksmith Shop), Marland, Oklahoma

Photo by Peavler and Associates for ABC and NPS, 1974





101 Ranch Hand Historic District (Bill Pickett's Grave and White Eagle Monument),  
Marland, Oklahoma. Photo by Peavler & Associates for ABC and NPS, 1974





NATIONAL REGISTER OF HISTORIC PLACES

PROPERTY PHOTOGRAPH FORM

(Type all entries - attach to or enclose with photograph)

STATE	Oklahoma
COUNTY	Kay
FOR NPS USE ONLY	
ENTRY NUMBER	DATE

SEE INSTRUCTIONS

1. NAME

COMMON: 101 Ranch Historic District - Hotel Ruins

AND/OR HISTORIC:

2. LOCATION

STREET AND NUMBER:  
13 Miles Southwest of Ponca City on Ok. State Hwy. 156

CITY OR TOWN:  
Marland

STATE: Oklahoma	CODE 40	COUNTY: Kay	CODE 071
--------------------	------------	----------------	-------------

3. PHOTO REFERENCE

PHOTO CREDIT: Peavler and Associates

DATE OF PHOTO: August 1974

NEGATIVE FILED AT:  
Peavler and Associates, Oklahoma City

4. IDENTIFICATION

DESCRIBE VIEW, DIRECTION, ETC.

Hotel Ruins





**NATIONAL REGISTER OF HISTORIC PLACES**  
**PROPERTY PHOTOGRAPH FORM**

*(Type all entries - attach to or enclose with photograph)*

STATE Oklahoma	
COUNTY Kay	
FOR NPS USE ONLY	
ENTRY NUMBER	DATE

SEE INSTRUCTIONS

**1. NAME**

COMMON: 101 Ranch Historic District - White House Ruins  
AND/OR HISTORIC:

**2. LOCATION**

STREET AND NUMBER:  
13 Miles Southwest of Ponca City on Ok. State Hwy. 156

CITY OR TOWN:  
Marland

STATE: Oklahoma	CODE 40	COUNTY: Kay	CODE 071
--------------------	------------	----------------	-------------

**3. PHOTO REFERENCE**

PHOTO CREDIT: Peavler and Associates  
DATE OF PHOTO: August 1974  
NEGATIVE FILED AT:  
Peavler and Associates, Oklahoma City

**4. IDENTIFICATION**

DESCRIBE VIEW, DIRECTION, ETC.  
White House ruins.





Cate

101 Ranch Historic District  
13 Miles SW of Ponca City  
on Ok. St. Hwy 156.

Marland, Okla. Ray City

~~Peavler and Associates,~~  
Oklahoma City

Date: August, 1974

Identification: Front-Side  
View





101 Ranch Historic District (Horse Barn), Marland, Oklahoma  
Photo by Peavler and Associates for ABC and NPS, 1974

**NATIONAL REGISTER OF HISTORIC PLACES  
PROPERTY PHOTOGRAPH FORM**

*(Type all entries - attach to or enclose with photograph)*

STATE <b>Oklahoma</b>	
COUNTY <b>Kay</b>	
FOR NPS USE ONLY	
ENTRY NUMBER	DATE

SEE INSTRUCTIONS

**1. NAME**

COMMON: **101 Ranch Historic District - Horse Barn**  
AND/OR HISTORIC:

**2. LOCATION**

STREET AND NUMBER:  
**13 Miles Southwest of Ponca City on Ok. State Hwy. 156**

CITY OR TOWN:  
**Marland**

STATE: <b>Oklahoma</b>	CODE <b>40</b>	COUNTY: <b>Kay</b>	CODE <b>071</b>
---------------------------	-------------------	-----------------------	--------------------

**3. PHOTO REFERENCE**

PHOTO CREDIT: **Peavler and Associates**

DATE OF PHOTO: **August 1974**

NEGATIVE FILED AT:  
**Peavler and Associates, Oklahoma City**

**4. IDENTIFICATION**

DESCRIBE VIEW, DIRECTION, ETC.  
**Horse Barn**





**NATIONAL REGISTER OF HISTORIC PLACES  
PROPERTY PHOTOGRAPH FORM**

*(Type all entries - attach to or enclose with photograph)*

STATE

Oklahoma

COUNTY

Kay

FOR NPS USE ONLY

ENTRY NUMBER

DATE

SEE INSTRUCTIONS

**1. NAME**

COMMON:

101 Ranch Historic District - Dairy Barn

AND/OR HISTORIC:

**2. LOCATION**

STREET AND NUMBER:

13 Miles Southwest of Ponca City on Ok. State Hwy. 156

CITY OR TOWN:

Marland

STATE:

Oklahoma

CODE

40

COUNTY:

Kay

CODE

071

**3. PHOTO REFERENCE**

PHOTO CREDIT:

Peavler and Associates

DATE OF PHOTO:

August 1974

NEGATIVE FILED AT:

Peavler and Associates

**4. IDENTIFICATION**

DESCRIBE VIEW, DIRECTION, ETC.

Dairy Barn





STATE	Oklahoma
COUNTY	Key
FOR NPS USE ONLY	
ENTRY NUMBER	DATE

**NATIONAL REGISTER OF HISTORIC PLACES**  
**PROPERTY PHOTOGRAPH FORM**

*(Type all entries - attach to or enclose with photograph)*

SEE INSTRUCTIONS

**1. NAME**

COMMON: 101 Ranch Historic District - Machine Shop (Slaughter House?)  
AND/OR HISTORIC:

**2. LOCATION**

STREET AND NUMBER: 13 Miles Southwest of Ponca City on Ok. State Hwy. 156  
CITY OR TOWN: Marland  
STATE: Oklahoma CODE: 40 COUNTY: Key CODE: 071

**3. PHOTO REFERENCE**

PHOTO CREDIT: Peavler and Associates  
DATE OF PHOTO: August 1974  
NEGATIVE FILED AT: Peavler and Associates, Oklahoma City

**4. IDENTIFICATION**

DESCRIBE VIEW, DIRECTION, ETC.  
Machine Shop (Slaughter House?)





**NATIONAL REGISTER OF HISTORIC PLACES  
PROPERTY PHOTOGRAPH FORM**

*(Type all entries - attach to or enclose with photograph)*

STATE

Oklahoma

COUNTY

Kay

FOR NPS USE ONLY

ENTRY NUMBER

DATE

SEE INSTRUCTIONS

**1. NAME**

COMMON: 101 Ranch Historic District - Chicken House

AND/OR HISTORIC:

**2. LOCATION**

STREET AND NUMBER:

13 Miles Southwest of Ponca City on Ok. State Hwy. 156

CITY OR TOWN:

Marland

STATE:

Oklahoma

CODE

40

COUNTY:

Kay

CODE

071

**3. PHOTO REFERENCE**

PHOTO CREDIT: Peavler and Associates

DATE OF PHOTO: August 1974

NEGATIVE FILED AT:

Peavler and Associates, Oklahoma City

**4. IDENTIFICATION**

DESCRIBE VIEW, DIRECTION, ETC.

Chicken House





STATE

Oklahoma

COUNTY

Kay

FOR NPS USE ONLY

ENTRY NUMBER

DATE

**NATIONAL REGISTER OF HISTORIC PLACES  
PROPERTY PHOTOGRAPH FORM**

*(Type all entries - attach to or enclose with photograph)*

SEE INSTRUCTIONS

**1. NAME**

COMMON: 101 Ranch Historic District - Ranch Foreman's House

AND/OR HISTORIC:

**2. LOCATION**

STREET AND NUMBER:

13 Miles Southwest of Ponca City on Ok. State Hwy. 156

CITY OR TOWN:

Marland

STATE:

Oklahoma

CODE

40

COUNTY:

Kay

CODE

071

**3. PHOTO REFERENCE**

PHOTO CREDIT: Peavler and Associates

DATE OF PHOTO: August 1974

NEGATIVE FILED AT:

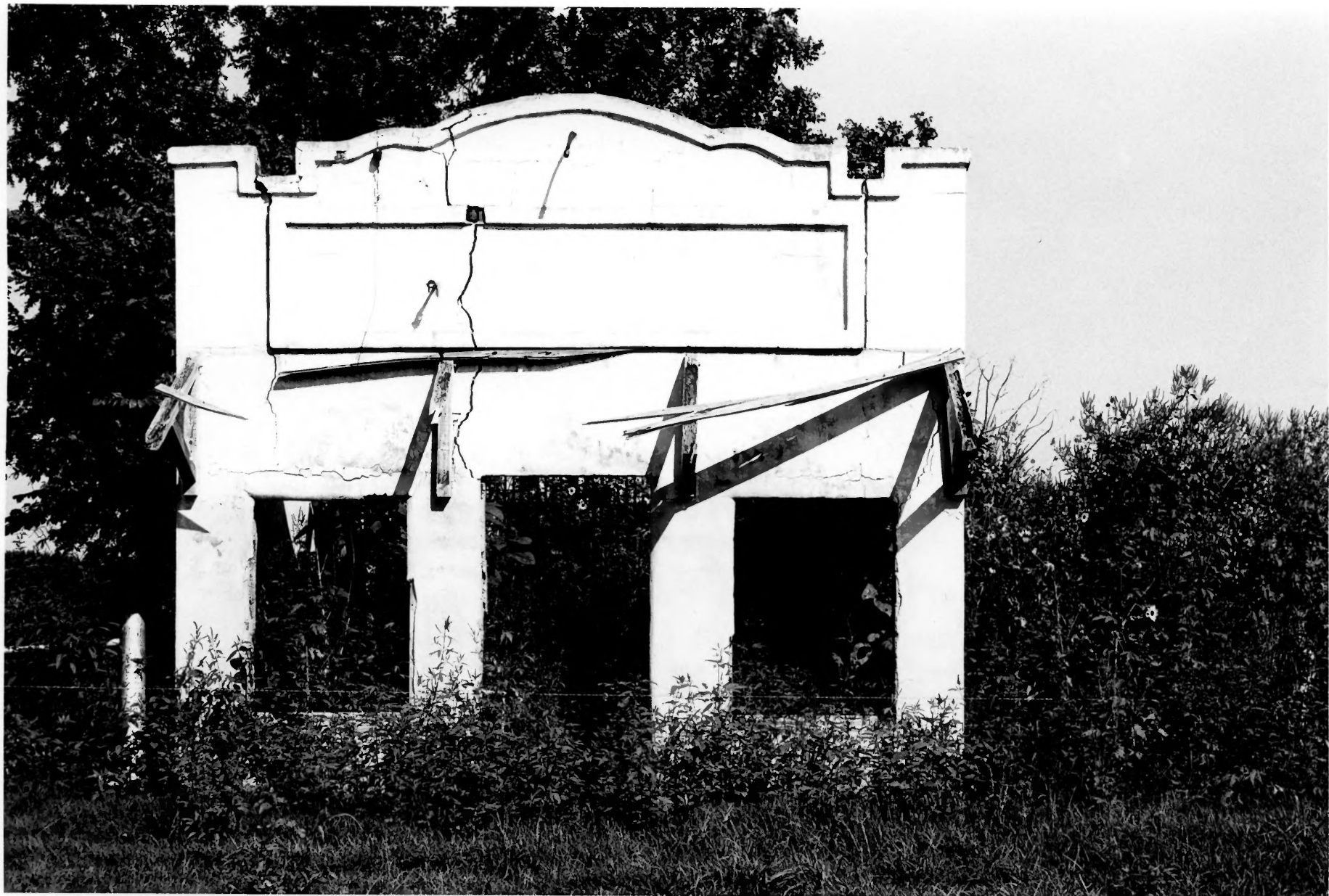
Peavler and Associates

**4. IDENTIFICATION**

DESCRIBE VIEW, DIRECTION, ETC.

Ranch Foreman's House





NATIONAL REGISTER OF HISTORIC PLACES

PROPERTY PHOTOGRAPH FORM

(Type all entries - attach to or enclose with photograph)

STATE Oklahoma	
COUNTY Kay	
FOR NPS USE ONLY	
ENTRY NUMBER	DATE

SEE INSTRUCTIONS

1. NAME

COMMON: 101 Ranch Historic District - Jail

AND/OR HISTORIC:

2. LOCATION

STREET AND NUMBER:  
13 Miles Southwest of Ponca City on Ok. State Hwy. 156

CITY OR TOWN:  
Marland

STATE: Oklahoma	CODE 40	COUNTY: Kay	CODE 071
--------------------	------------	----------------	-------------

3. PHOTO REFERENCE

PHOTO CREDIT: Peavler and Associates

DATE OF PHOTO: August 1974

NEGATIVE FILED AT:  
Peavler and Associates, Oklahoma City

4. IDENTIFICATION

DESCRIBE VIEW, DIRECTION, ETC.  
Jail





101 Ranch Historic District (Silos, Granery and Milk Storage), Marland, Oklahoma

Photo by Peavler and Associates for ABC and NPS, 1974

**COWBOY HILL**

GIVEN IN 1930 BY ZACK MILLER  
TO CHEROKEE STRIP COWPUNCHERS  
ASSOCIATION AS PLACE FOR ANNUAL  
REUNION OF THOSE WHO HAD RIDDEN  
THE RANGE IN THE STRIP.

OKLAHOMA HISTORICAL SOCIETY, 1930

**COW  
BOY  
HILL**

1920

LOL RANCH

CHEROKEE STRIP  
COW PUNCHERS  
ASSOCIATION



NATIONAL REGISTER OF HISTORIC PLACES  
PROPERTY PHOTOGRAPH FORM

(Type all entries - attach to or enclose with photograph)

STATE Oklahoma	
COUNTY Kay	
FOR NPS USE ONLY	
ENTRY NUMBER	DATE

SEE INSTRUCTIONS

1. NAME

COMMON: 101 Ranch Historic District - Cowboy Hill  
AND/OR HISTORIC:

2. LOCATION

STREET AND NUMBER:  
13 Miles Southwest of Ponca City on Ok. State Hwy. 156  
CITY OR TOWN:  
Marland  
STATE: Oklahoma CODE 40 COUNTY: Kay CODE 071

3. PHOTO REFERENCE

PHOTO CREDIT: Peavler and Associates  
DATE OF PHOTO: August 1974  
NEGATIVE FILED AT:  
Peavler and Associates, Oklahoma City

4. IDENTIFICATION

DESCRIBE VIEW, DIRECTION, ETC.  
Cowboy Hill