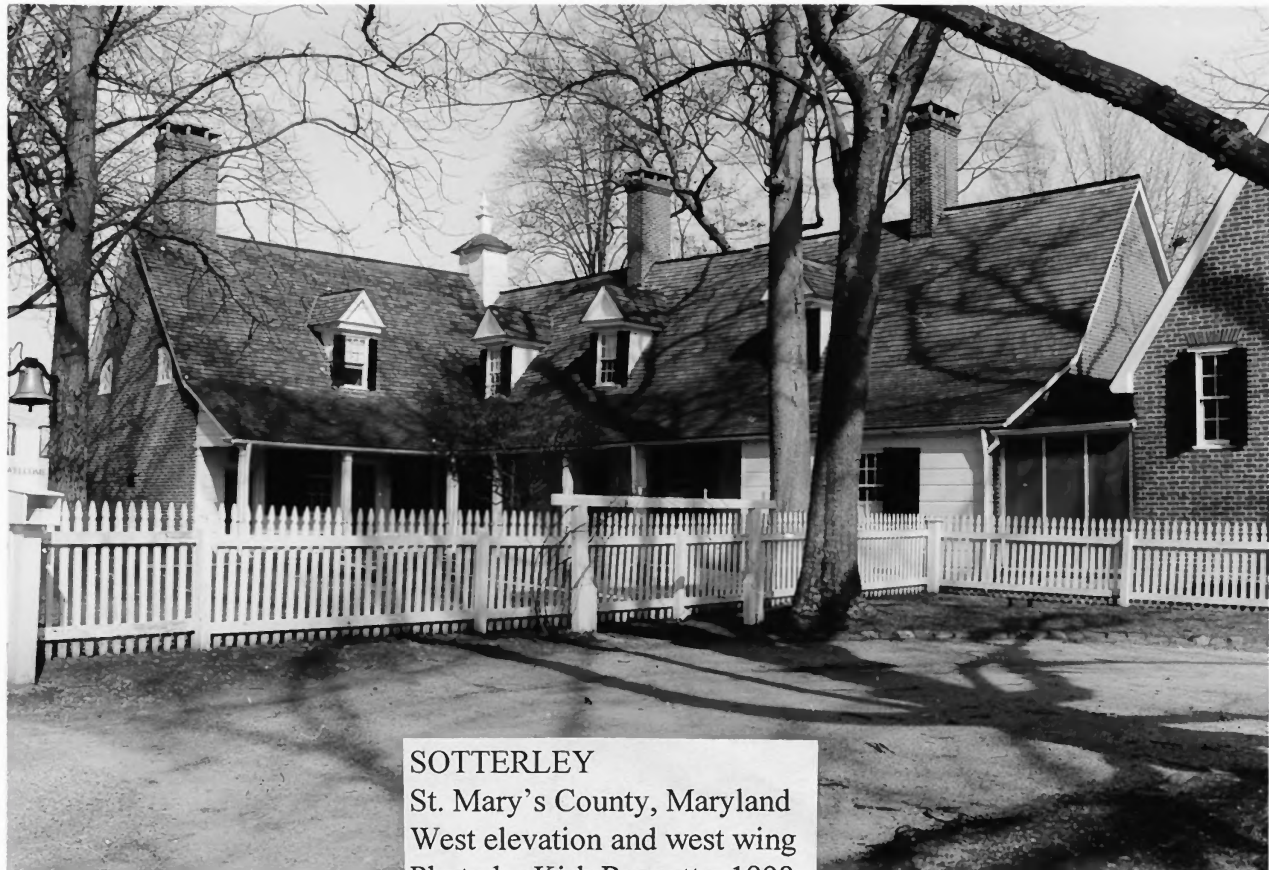


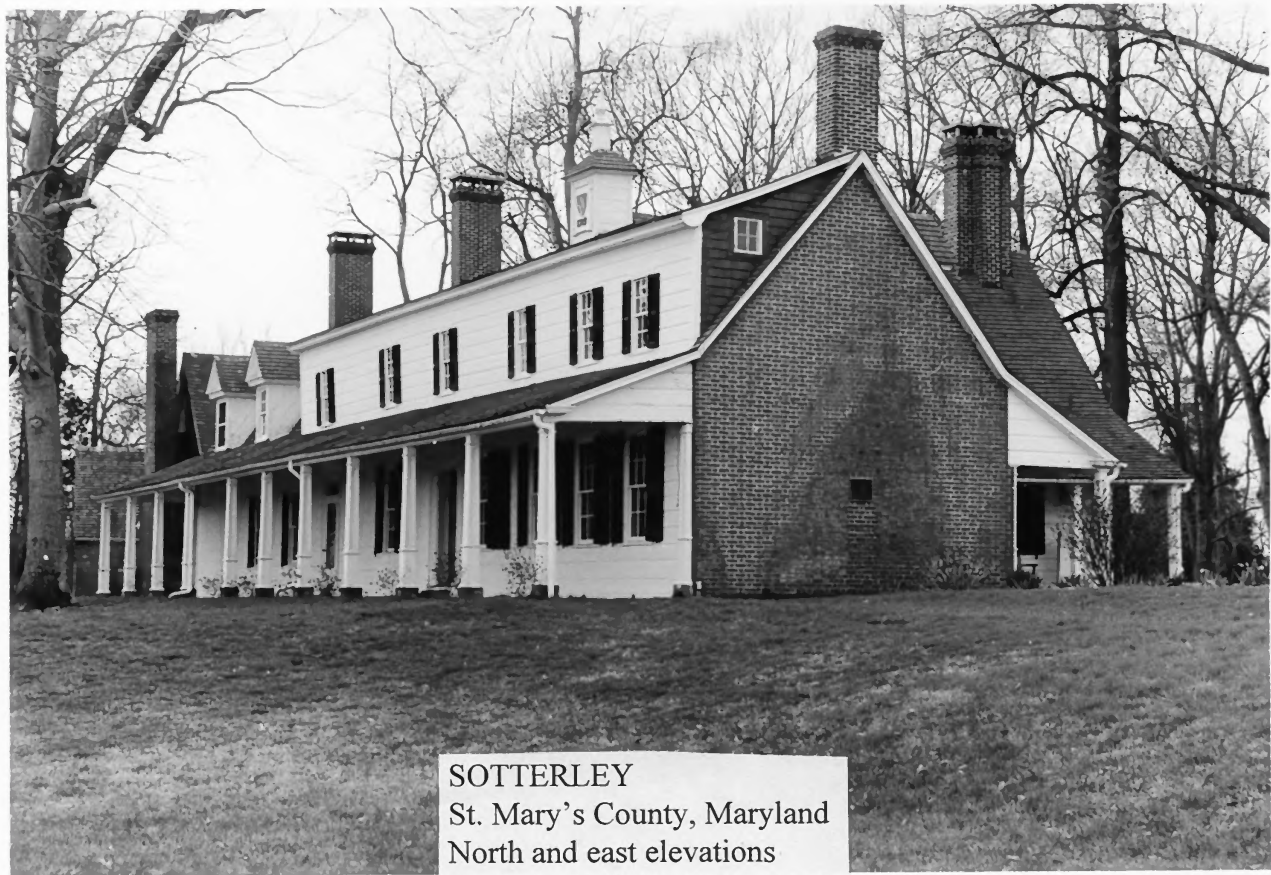
SOTTERLEY

St. Mary's County, Maryland
West elevation and gatehouses

Photo by Kirk Ranzetta, 1998



SOTTERLEY
St. Mary's County, Maryland
West elevation and west wing
Photo by Kirk Ranzetta, 1998



SOTTERLEY

St. Mary's County, Maryland

North and east elevations

Photo by Kirk Ranzetta, 1998

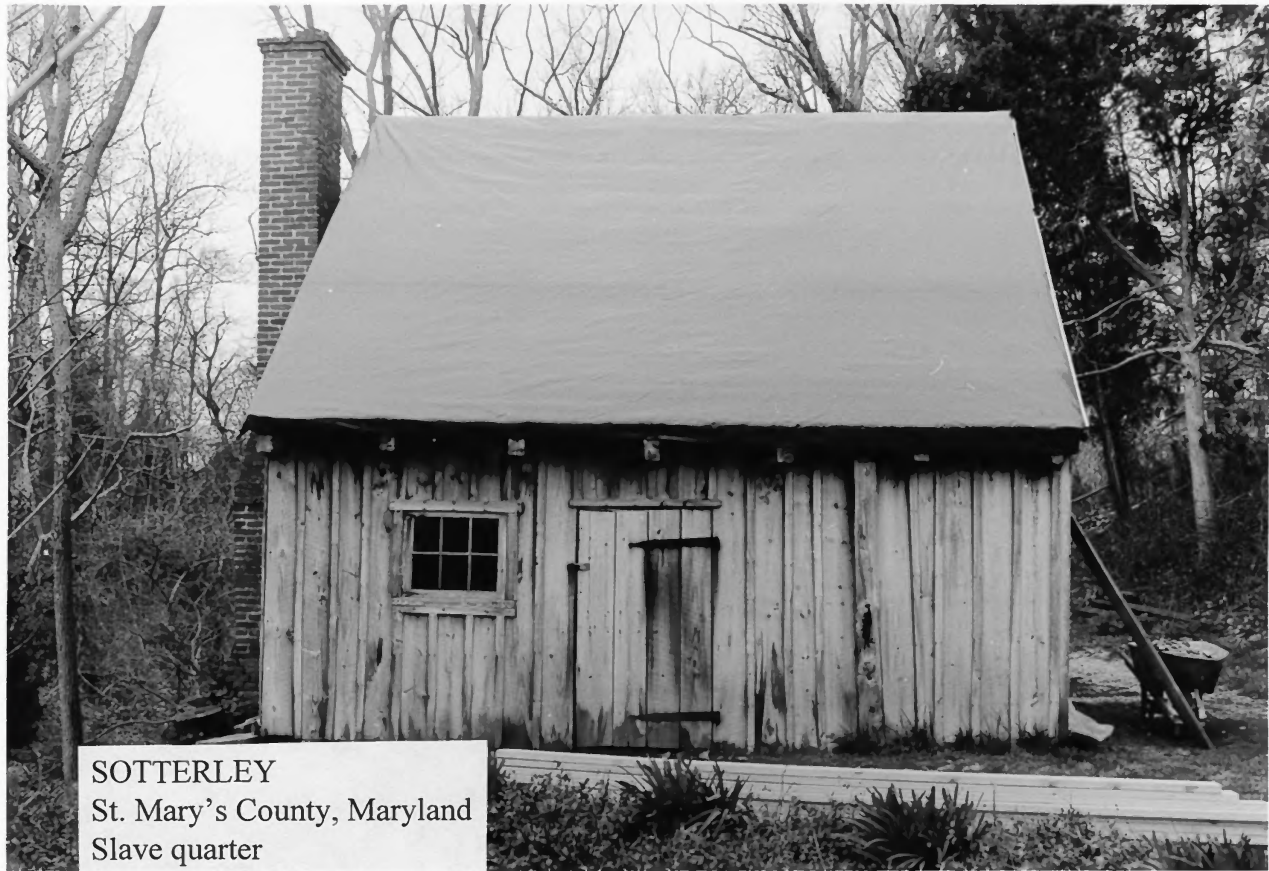


SOTTERLEY

St. Mary's County, Maryland
Detail of east facade and porch
Photo by Kirk Ranzetta, 1998



SOTTERLEY
St. Mary's County, Maryland
Smokehouse
Photo by Kirk Ranzetta, 1998

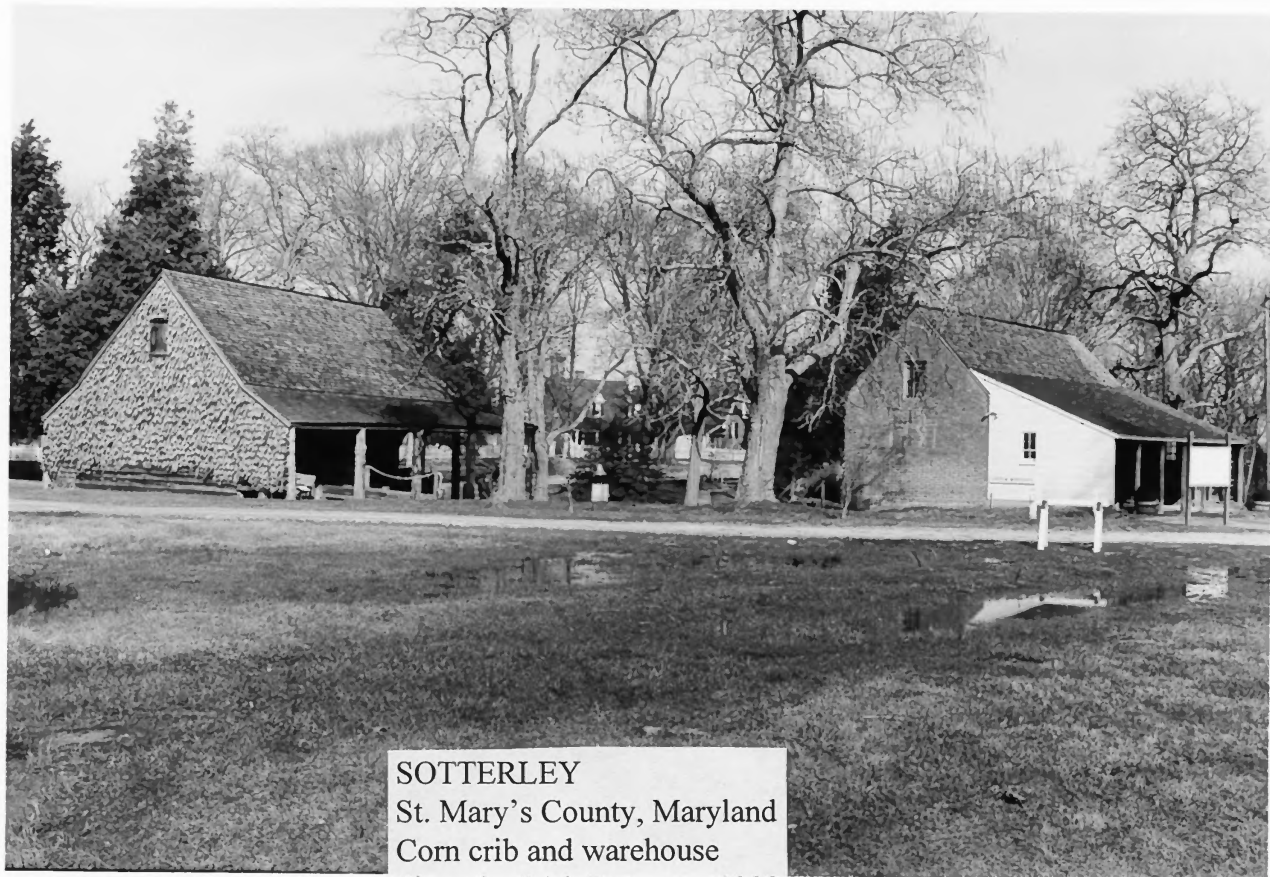


SOTTERLEY

St. Mary's County, Maryland

Slave quarter

Photo by Kirk Ranzetta, 1998



SOTTERLEY

St. Mary's County, Maryland
Corn crib and warehouse

Photo by Kirk Ranzetta, 1998



SOTTERLEY

St. Mary's County, Maryland

Garden shed, turkey house, and necessary

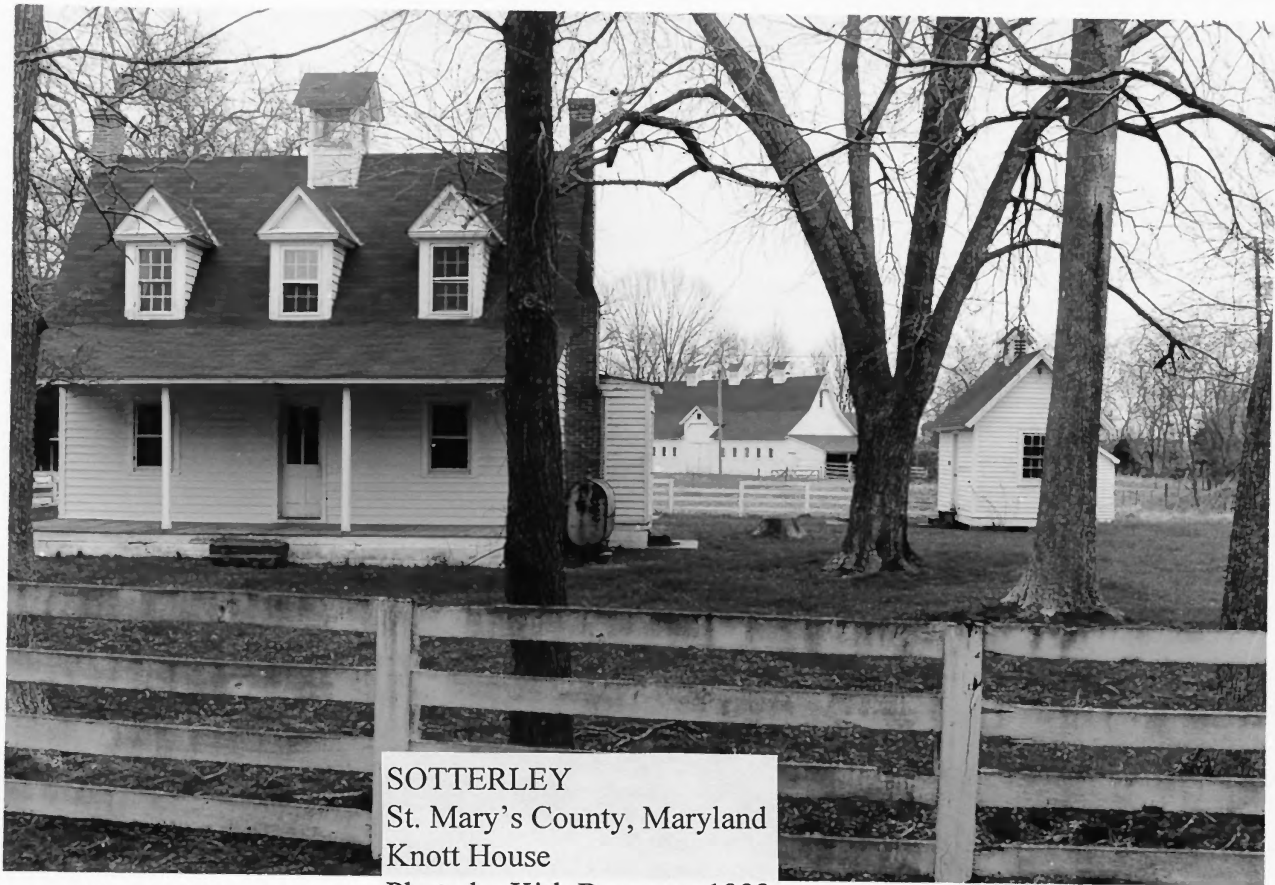
Photo by Kirk Ranzetta, 1998



SOTTERLEY

St. Mary's County, Maryland
Sheep barn and storage shed

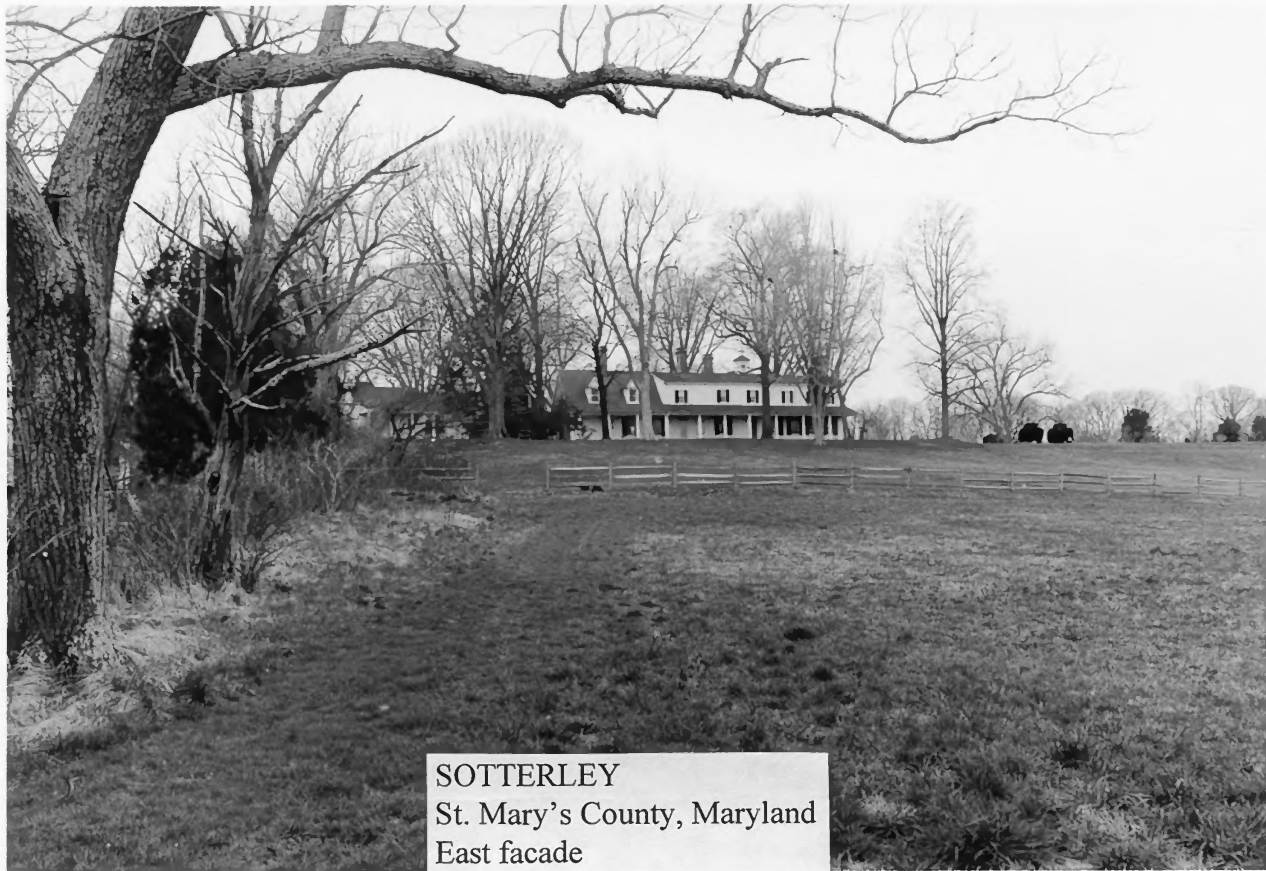
Photo by Kirk Ranzetta, 1998



SOTTERLEY

St. Mary's County, Maryland
Knott House

Photo by Kirk Ranzetta, 1998



SOTTERLEY

St. Mary's County, Maryland

East facade

Photo by Kirk Ranzetta, 1998



SOTTERLEY

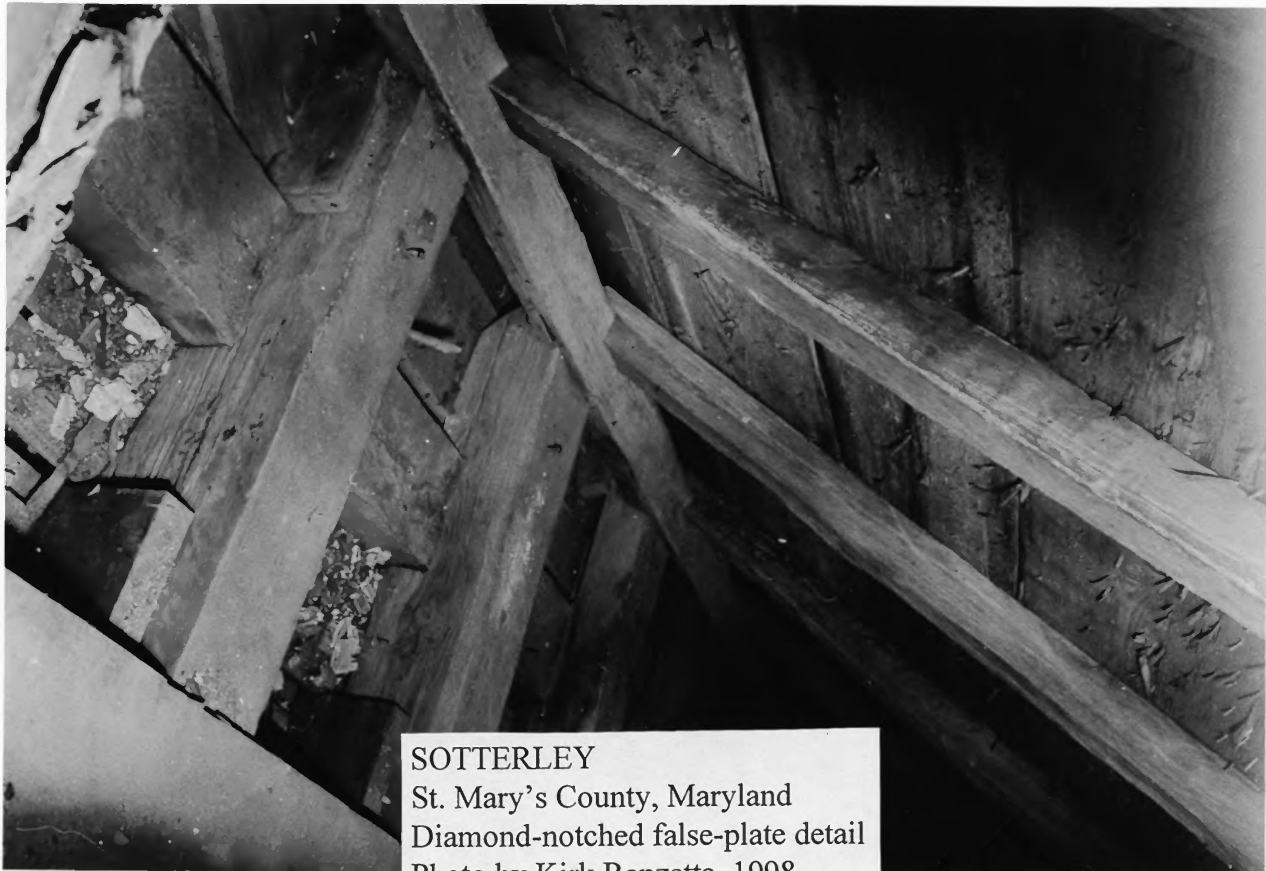
St. Mary's County, Maryland

Parlor door and hall stair

Photo by Kirk Ranzetta, 1998



SOTTERLEY
St. Mary's County, Maryland
North parlor mantle
Photo by Kirk Ranzetta, 1998



SOTTERLEY

St. Mary's County, Maryland

Diamond-notched false-plate detail

Photo by Kirk Ranzetta, 1998



SOTTERLEY

St. Mary's County, Maryland

"New Roome" mantle

Photo by Kirk Ranzetta, 1998



SOTTERLEY

St. Mary's County, Maryland

South parlor mantle

Photo by Kirk Ranzetta, 1998