



Old Waterworks
Bethlehem, Pa.

Photo No. 1

By: George R. Adams, AASLH

Negative at: HSS, NPS

Date: February 1977

View: From southwest, showing
west end and south side.



Old Waterworks
Bethlehem, Pa.

Photo No. 2

By: George R. Adams, AASLH

Negative at: HSS, NPS

Date: February 1977

View: From southwest, showing west
end and south side of the water-
works and the surrounding area
within the property boundary.



Old Waterworks
Bethlehem, Pa.

Photo No. 3

By: George R. Adams, AASLH

Negative at: HSS, NPS

Date: February 1977

View: From north, showing north
side of waterworks and Hill-to-
Hill Bridge.



HISTORIC BETHLEHEM INC.'S RESTORED 1762 WATERWORKS, LOCATED IN THE 18th
CENTURY MORAVIAN INDUSTRIAL AREA, BETHLEHEM, PENNSYLVANIA. THIS BUILDING
HOUSED THE FIRST PUMPED MUNICIPAL WATER SYSTEM IN THE AMERICAN COLONIES.

Historic Bethlehem Inc., Main & Church Streets, Bethlehem, Pa. 18018

Old Waterworks
Bethlehem, Pa.

Photo No. 4

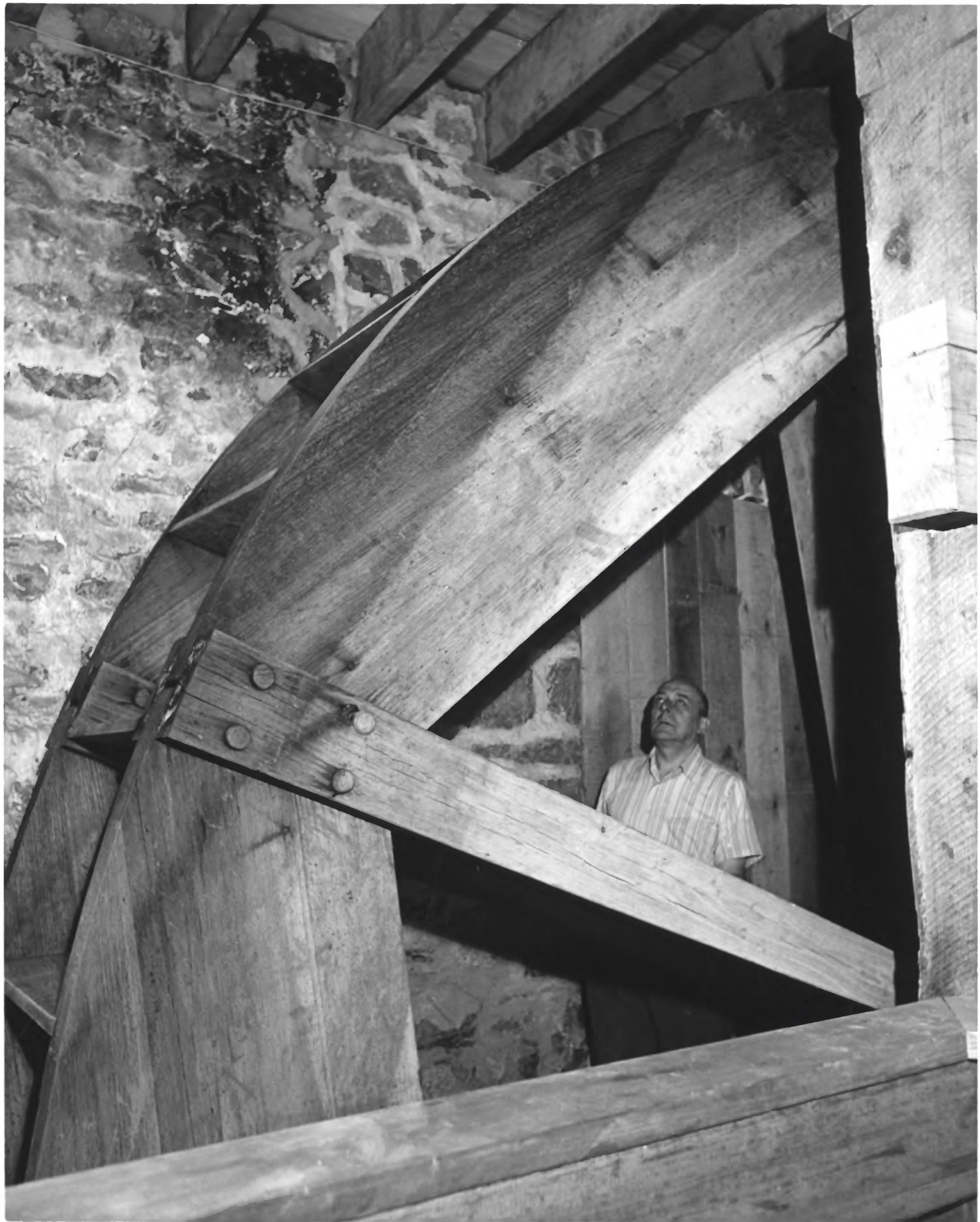
By: Historic Bethlehem, Inc.

Negative at: Historic Bethlehem, Inc.

Date: 1976

View: From southwest, showing west
end and south side.

#4



Old Waterworks
Bethlehem, Pa.

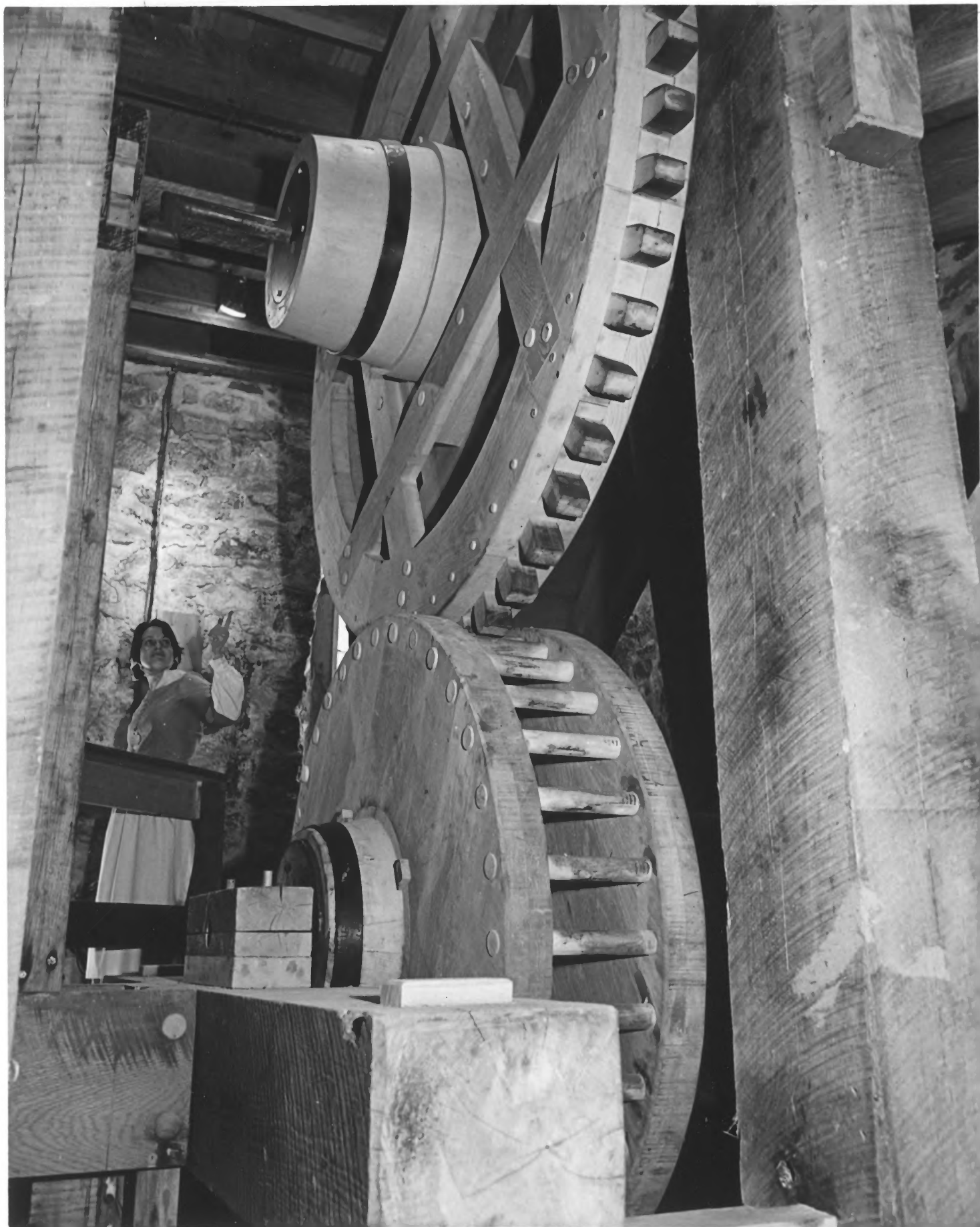
Photo No. 5

By: Historic Bethlehem, Inc.

Negative at: Historic Bethlehem, Inc

Date: 1976

View: Interior, showing portion of
the 17.5-foot undershot waterwheel.



Old Waterworks
Bethlehem, Pa.

Photo No. 6

By: Historic Bethlehem, Inc.

Negative at: Historic Bethlehem, Inc

Date: 1976

View: Interior, showing wallower
and spurwheel.